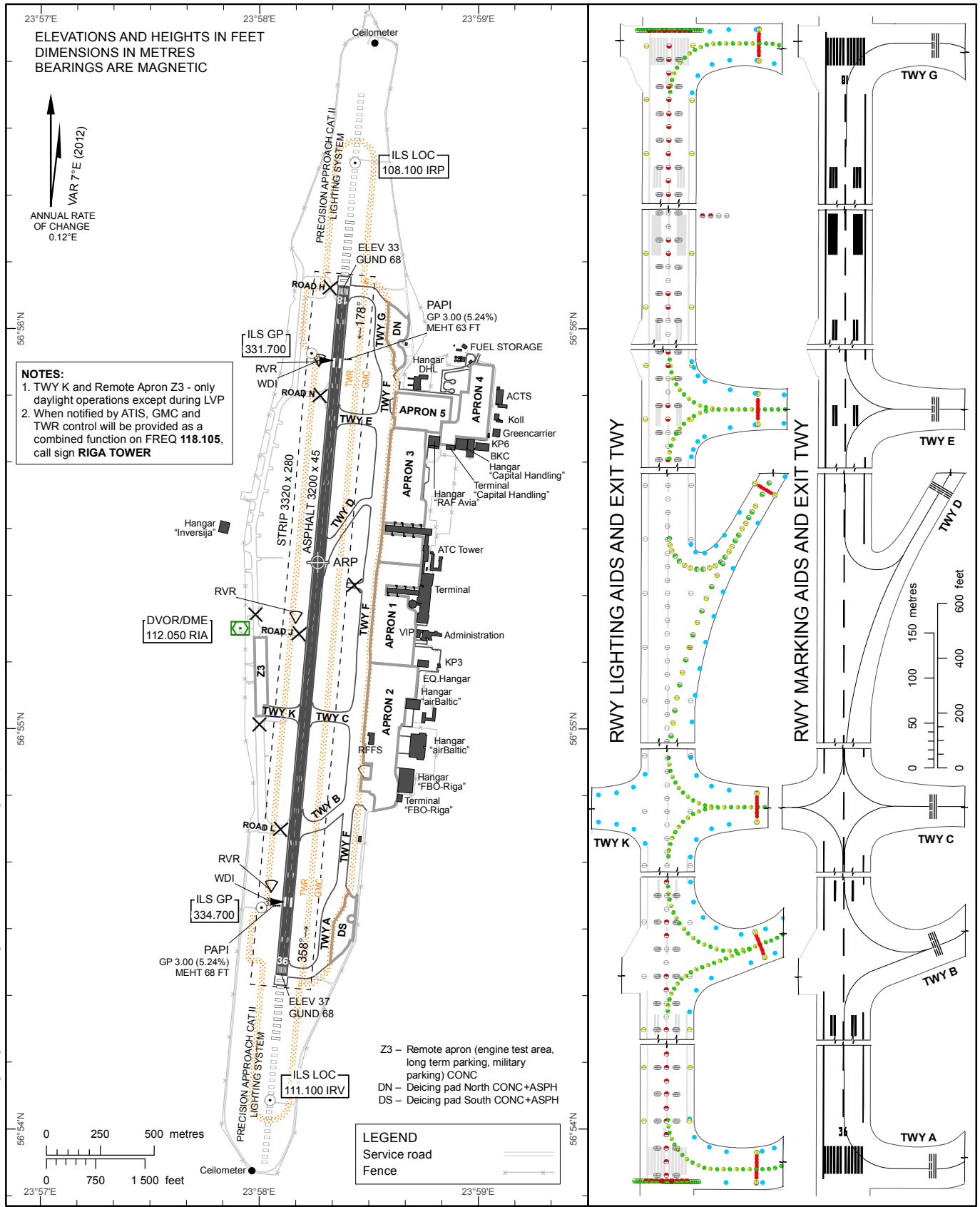


AERODROME CHART – ICAO 56°55'25"N 023°58'16"E **ELEV 37 FT**

TWR	118.105
GMC	118.805
APRON	131.605
ATIS	120.180

RIGA



NOTES:
1. TWY K and Remote Apron Z3 - only daylight operations except during LVP
2. When notified by ATIS, GMC and TWR control will be provided as a combined function on FREQ 118.105, call sign RIGA TOWER

Z3 – Remote apron (engine test area, long term parking, military parking) CONC
DN – Deicing pad North CONC+ASPH
DS – Deicing pad South CONC+ASPH

LEGEND
Service road
Fence

RWY	TRUE DIRECTION	THR	BEARING STRENGTH		
18	185.16°	56°56'06.25"N 023°58'23.08"E	RWY	ASPH	PCN 110/F/A/W/T
			TWY A,B,C,G	ASPH	PCN 90/F/C/W/U
			TWY D	ASPH	PCN 88/F/C/W/T
			TWY E	ASPH	PCN 90/F/C/W/U
36	005.15°	56°54'23.22"N 023°58'06.08"E	TWY F	CONC+ASPH	PCN 90/F/C/W/U
			TWY K	ASPH	PCN 61/F/C/X/U

Remarks:
1. APPROACH and RWY lighting see EVRA AD 2.14
2. RWY marking see EVRA AD 2.9
3. The rapid-exit TWY D is designed for Code C (max. wingspan 36 m) or smaller ACFT.

Changes: DN and DS surface, TWY A edge lights, fence, Hangar DHL and THR 36 lights updated.

INTENTIONALLY LEFT BLANK