

AFIS 129.400

ELEVATIONS 496
HEIGHTS (478)
 ELEV, ALT,
 HEIGHTS IN FT
 DIST IN NM
 BRG ARE MAG
 VAR 6°E (2016)

Final approach track offset 3°
 from RWY centerline 244°

DME REQUIRED

TIZ
 LIEPAJA
 1500 FT ALT
 GND
 AFIS

TIA
 LIEPAJA
 1500 FT ALT
 AFIS

TAF
 LIEPAJA
 1500 FT ALT
 AFIS

(FAF)
 LEP D8.7
 56°34'09"N
 021°19'37"E

(SDF)
 LEP D3.3

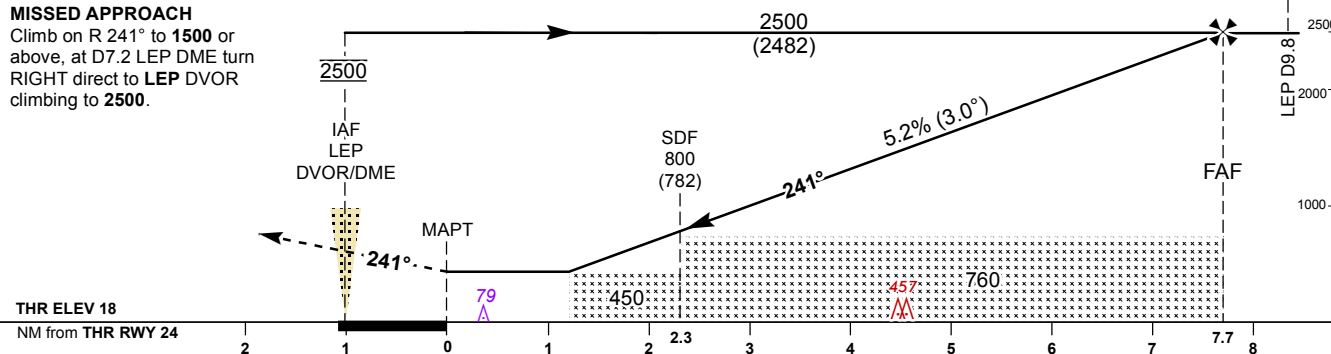
(IAF)
 LIEPAJA
 2500
 DVOR/DME
 116.950 LEP

NOTE:
 1. Reduced Instrument approach
 lighting system (IALS) length – 450m;
 2. TIA and TIZ are TMZ/RMZ
 see ENR 2.1 and EVLA AD 2.17.

SCALE 1:400,000
 0 10 20 KM
 0 5 10 NM

FIR RIGA
FIR VILNIUS
LITHUANIA

MISSED APPROACH
Climb on R 241° to **1500** or
above, at D7.2 LEP DME turn
RIGHT direct to **LEP** DVOR
climbing to **2500**.



OCA (H)		A	B	C	D	DME LEP	8	7	6	5	4	3
Straight-in Approach	VOR/DME	450 (430)				ALTITUDE	2270	1960	1640	1320	1010	690
						HEIGHT	(2252)	(1942)	(1622)	(1302)	(992)	(672)
Circling		540 (520)				Timing not authorized for defining the MAPT						

For data tabulation see verso

For data tabulation see verso

**LIEPAJA (EVLA)
VOR Z RWY 24
(ACFT CAT A)**

AERONAUTICAL DATA TABULATION

VOR approach to RWY 24 from LEP DVOR/DME	
Fix/point	Coordinates
LEP DVOR/DME (IAF)	56°30'46.0"N 021°05'05.1"E
LEP D8.73 (FAF)	56°34'09.4"N 021°19'36.6"E
LEP D3.35 (SDF)	56°32'04.2"N 021°10'38.9"E
LEP D1.03 (MAPT)	56°31'10.0"N 021°06'47.3"E
THR RWY 24	56°31'13.99"N 021°06'44.48"E
Final approach descent angle is 2.98°	