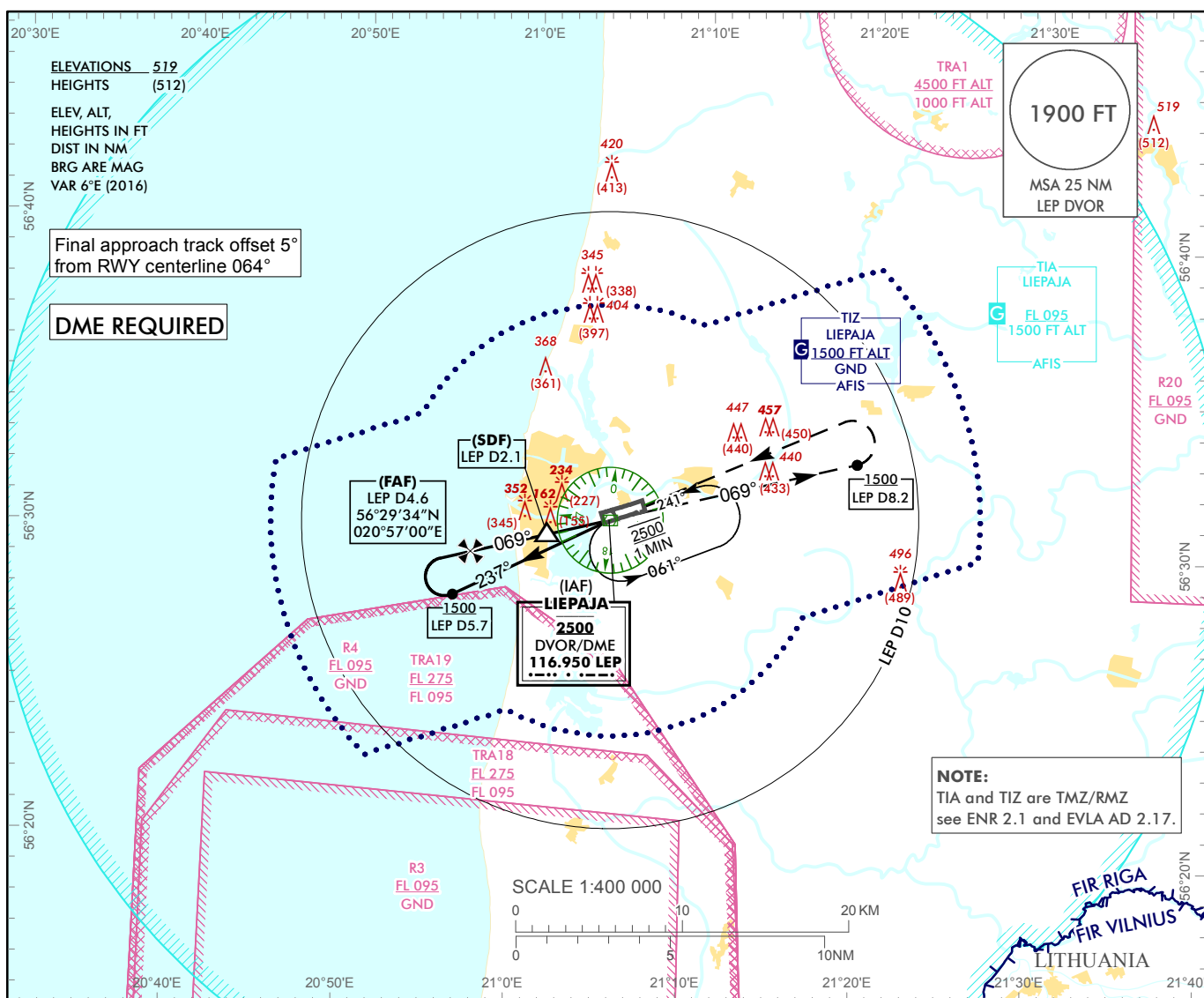


AERODROME ELEV 18 ft
HEIGHTS RELATED TO
THR RWY 06 - ELEV 7 ft

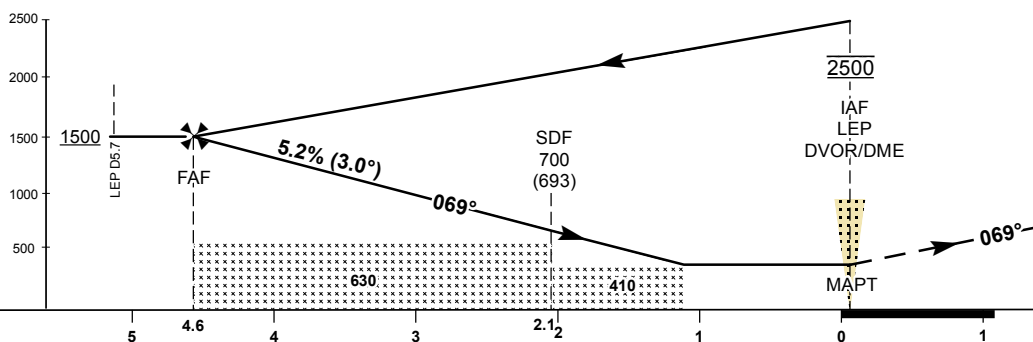
AFIS 129.400

**LIEPAJA (EVLA)
VOR Z RWY 06
(ACFT CAT A)**



TRANSITION ALT 5000

Climb on R 069° to **1500** or above, at D8.2 LEP DME turn LEFT direct to **LEP DVOR** climbing to **2500**.



THR ELEV 7
NM from THR RWY 06

OCA (H)		A	B	C	D	DME LEP	4	3	2
Straight-in Approach	VOR/DME	410 (410)				ALTITUDE	1300	990	670
						HEIGHT	(1293)	(983)	(663)
Circling		540 (520)				Timing not authorized for defining the MAPT			

Timing not authorized for defining the MAPT
For data tabulation see verso

LIEPAJA (EVLA)
VOR Z RWY 06
(ACFT CAT A)

AERONAUTICAL DATA TABULATION

VOR approach to RWY 06 from LEP DVOR/DME (IAF)	
Fix/point	Coordinates
LEP DVOR/DME (IAF)	56°30'46.0"N 021°05'05.1"E
LEP D4.64 (FAF)	56°29'33.9"N 020°57'00.3"E
LEP D2.11 (SDF)	56°30'13.4"N 021°01'25.1"E
LEP DVOR/DME (MAPT)	56°30'46.0"N 021°05'05.1"E
THR RWY 06	56°30'52.18"N 021°04'54.24"E
Final approach descent angle is 2.98°	