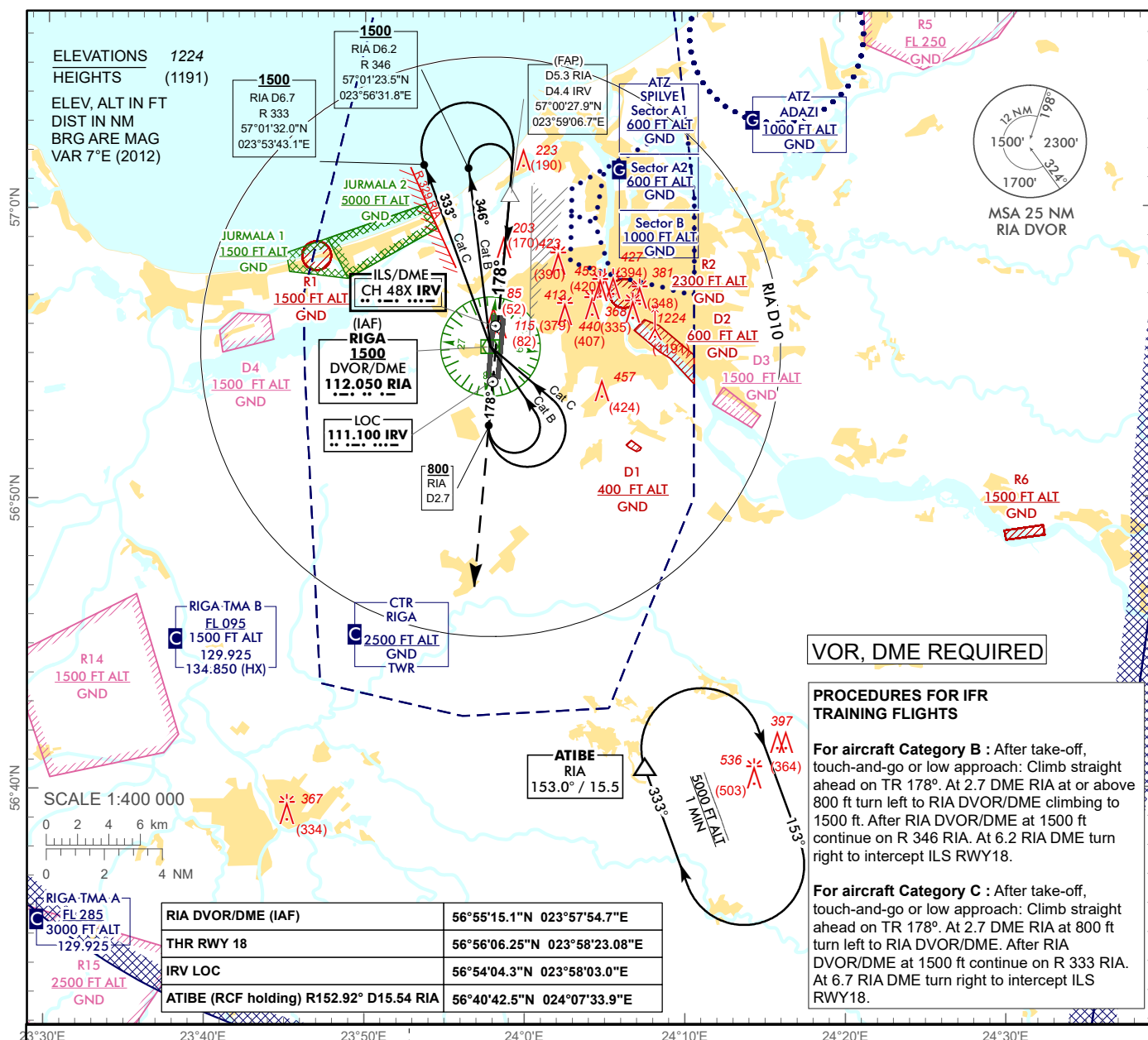


AERODROME ELEV 37 ft
HEIGHTS RELATED TO
THR RWY 18 - ELEV **33 ft**

APP	129.925
	134.850 (HX)
TWR	118.105
ATIS	120.180

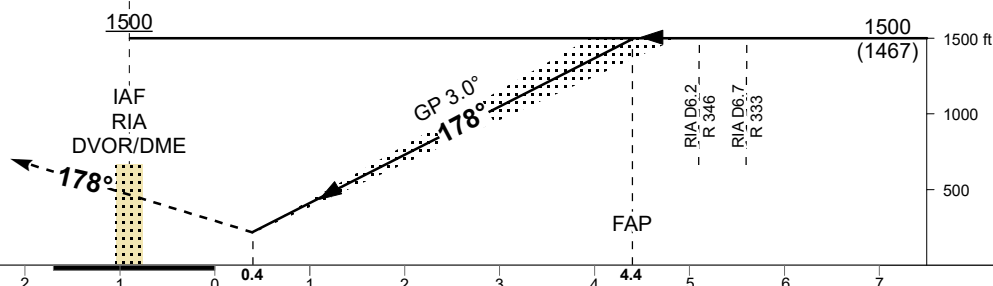
ILS RWY 18





Climb on runway track to 2500,
after passing 1500 radar
vectoring will be provided.

COM FAILURE see
EVRAAD 2.22

THR ELEV 33



Aircraft Category		B	C	DME IRV	7	6	5	4	3	2	1
Straight-in Approach OCA(H)	ILS Cat I	233 (200)		DME RIA	7.9	6.9	5.9	4.9	3.9	2.9	1.9
				DIST THR	7	6	5	4	3	2	1
Circling		530 (500)	730 (690)	ALTITUDE	2360	2030	1700	1380	1050	730	410
<div><p>REMARK:</p><p> - JURMALA 1, 2 - noise abatement areas (Ref. EVRA AD 2.21)</p><p>HX - No specific working hours</p></div>				HEIGHT	(2227)	(1997)	(1667)	(1347)	(1017)	(697)	(377)
				GS		Kt	80	100	120	140	160
Rate of descent		ft/min	420	530	640	740	850	960			

Changes: JURMALAATZ withdrawn.

INTENTIONALLY LEFT BLANK