

STANDARD DEPARTURE CHART - INSTRUMENT (SID) - ICAO

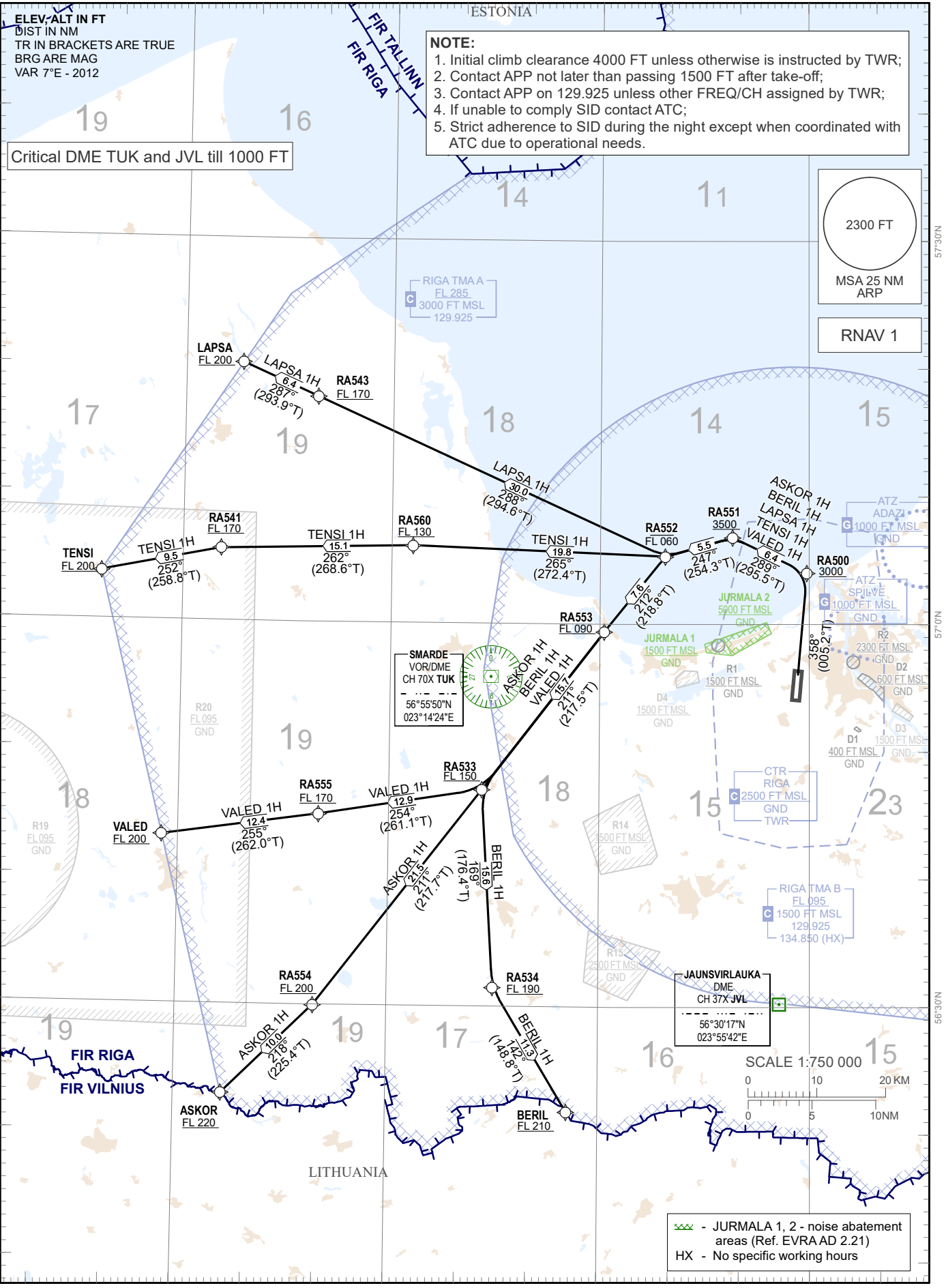
TRANSITION ALTITUDE
5000 FT

APP 129.925
TWR 134.850 (HX)
ATIS 118.105
120.180

RIGA (EVRA)
RNAV (GNSS or DME/DME) RWY 36
(direction WEST)

MAX IAS 250 kt BELOW FL 100

ASKOR 1H, BERIL 1H, LAPSA 1H, TENSI 1H, VALED 1H



Changes: JURMALA ATZ withdrawn, notes updated.

RNAV PROCEDURE CODING TABLES

ASKOR 1H

Serial Number	Path Descriptor	Waypoint Identifier	Fly - over	Course °M(°T)	Magnetic Variation(°)	Distance NM	Turn Direction	Altitude FT	Speed KT	Navigation Specification
10	CA	-	-	358(005.2)	+7.0		-	+600		RNAV 1
20	DF	RA500	-	-	+7.0		-	+3000		RNAV 1
30	TF	RA551	-	289(295.5)	+7.0	6.4	L	+3500		RNAV 1
40	TF	RA552	-	247(254.3)	+7.0	5.5	L	-060 FL		RNAV 1
50	TF	RA553	-	212(218.8)	+7.0	7.6	L	+090 FL		RNAV 1
60	TF	RA533	-	211(217.5)	+7.0	15.7	-	+150 FL		RNAV 1
70	TF	RA554	-	211(217.7)	+7.0	21.5	-	+200 FL		RNAV 1
80	TF	ASKOR	-	218(225.4)	+7.0	10.0	R	+220 FL		RNAV 1

BERIL 1H

Serial Number	Path Descriptor	Waypoint Identifier	Fly - over	Course °M(°T)	Magnetic Variation(°)	Distance NM	Turn Direction	Altitude FT	Speed KT	Navigation Specification
10	CA	-	-	358(005.2)	+7.0		-	+600		RNAV 1
20	DF	RA500	-	-	+7.0		-	+3000		RNAV 1
30	TF	RA551	-	289(295.5)	+7.0	6.4	L	+3500		RNAV 1
40	TF	RA552	-	247(254.3)	+7.0	5.5	L	-060 FL		RNAV 1
50	TF	RA553	-	212(218.8)	+7.0	7.6	L	+090 FL		RNAV 1
60	TF	RA533	-	211(217.5)	+7.0	15.7	-	+150 FL		RNAV 1
70	TF	RA534	-	169(176.4)	+7.0	15.6	L	+190 FL		RNAV 1
80	TF	BERIL	-	142(148.8)	+7.0	11.3	L	+210 FL		RNAV 1

LAPSA 1H

Serial Number	Path Descriptor	Waypoint Identifier	Fly - over	Course °M(°T)	Magnetic Variation(°)	Distance NM	Turn Direction	Altitude FT	Speed KT	Navigation Specification
10	CA	-	-	358(005.2)	+7.0		-	+600		RNAV 1
20	DF	RA500	-	-	+7.0		-	+3000		RNAV 1
30	TF	RA551	-	289(295.5)	+7.0	6.4	L	+3500		RNAV 1
40	TF	RA552	-	247(254.3)	+7.0	5.5	L	-060 FL		RNAV 1
50	TF	RA543	-	288(294.6)	+7.0	30.0	R	+170 FL		RNAV 1
60	TF	LAPSA	-	287(293.9)	+7.0	6.4	-	+200 FL		RNAV 1

TENSI 1H

Serial Number	Path Descriptor	Waypoint Identifier	Fly - over	Course °M(°T)	Magnetic Variation(°)	Distance NM	Turn Direction	Altitude FT	Speed KT	Navigation Specification
10	CA	-	-	358(005.2)	+7.0		-	+600		RNAV 1
20	DF	RA500	-	-	+7.0		-	+3000		RNAV 1
30	TF	RA551	-	289(295.5)	+7.0	6.4	L	+3500		RNAV 1
40	TF	RA552	-	247(254.3)	+7.0	5.5	L	-060 FL		RNAV 1
50	TF	RA560	-	265(272.4)	+7.0	19.8	R	+130 FL		RNAV 1
60	TF	RA541	-	262(268.6)	+7.0	15.1	-	+170 FL		RNAV 1
70	TF	TENSI	-	252(258.8)	+7.0	9.5	L	+200 FL		RNAV 1

VALED 1H

Serial Number	Path Descriptor	Waypoint Identifier	Fly - over	Course °M(°T)	Magnetic Variation(°)	Distance NM	Turn Direction	Altitude FT	Speed KT	Navigation Specification
10	CA	-	-	358(005.2)	+7.0		-	+600		RNAV 1
20	DF	RA500	-	-	+7.0		-	+3000		RNAV 1
30	TF	RA551	-	289(295.5)	+7.0	6.4	L	+3500		RNAV 1
40	TF	RA552	-	247(254.3)	+7.0	5.5	L	-060 FL		RNAV 1
50	TF	RA553	-	212(218.8)	+7.0	7.6	L	+090 FL		RNAV 1
60	TF	RA533	-	211(217.5)	+7.0	15.7	-	+150 FL		RNAV 1
70	TF	RA555	-	254(261.1)	+7.0	12.9	R	+170 FL		RNAV 1
70	TF	VALED	-	255(262.0)	+7.0	12.4	-	+200 FL		RNAV 1

WAYPOINT COORDINATES

WPT	COORD	
ASKOR	562258.00N	0223646.00E
BERIL	562147.00N	0232535.00E
LAPSA	572013.00N	0223813.00E
TENSI	570347.00N	0221820.00E
VALED	564311.00N	0222743.00E
RA500	570403.31N	0235941.16E
RA533	564659.16N	0231315.50E
RA534	563128.84N	0231501.30E
RA541	570538.91N	0223527.80E
RA543	571737.01N	0224905.90E
RA551	570648.90N	0234901.50E
RA552	570519.60N	0233918.90E
RA553	565923.85N	0233035.70E
RA554	562959.20N	0224935.30E
RA555	564456.43N	0225001.20E
RA560	570603.33N	0230303.70E