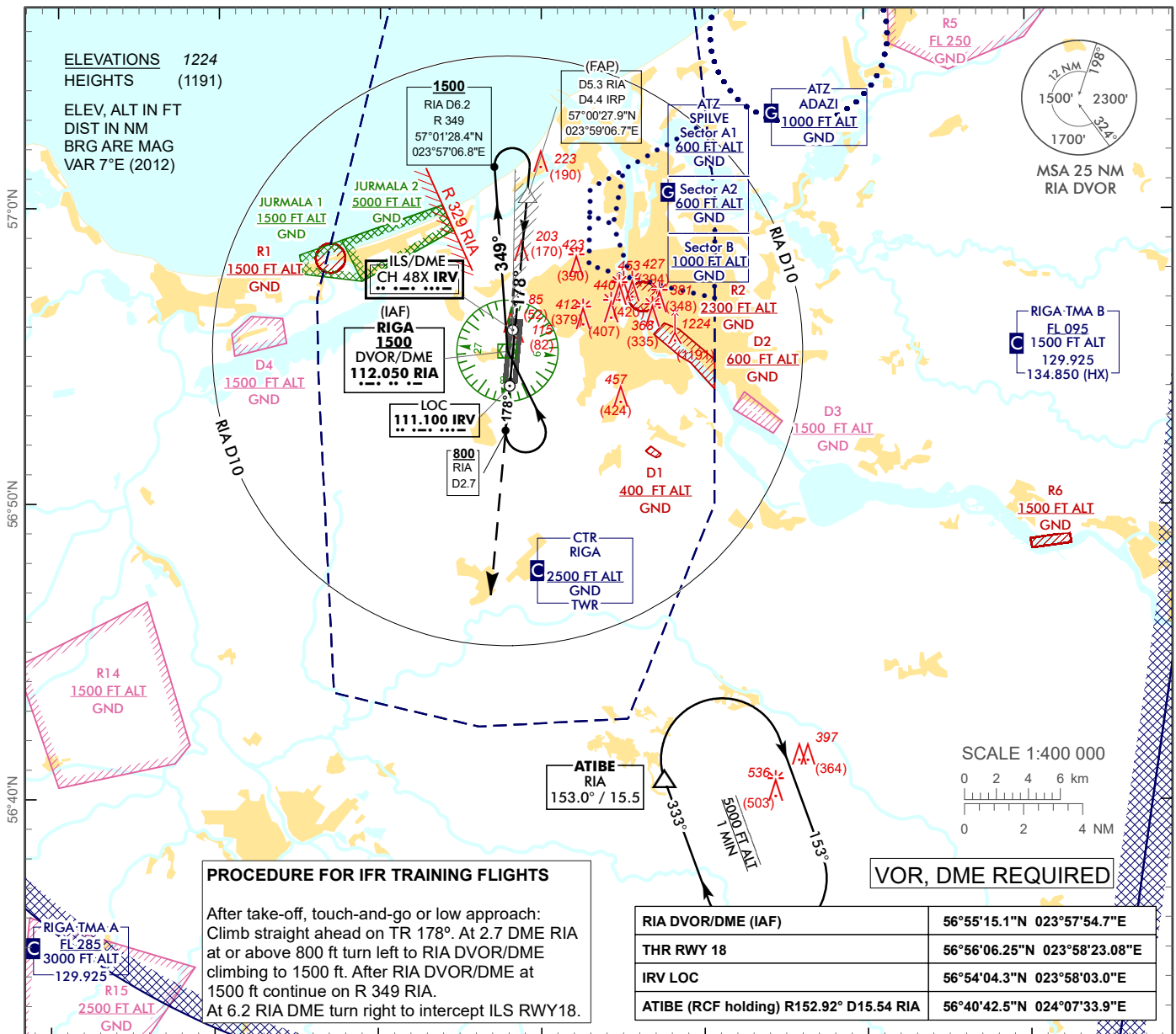


**INSTRUMENT APPROACH  
CHART  
FOR TRAINING  
FLIGHTS (Cat A)**
**AERODROME ELEV 37 ft**  
 HEIGHTS RELATED TO  
 THR RWY 18 - ELEV 33 ft

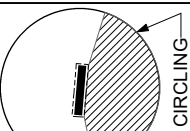
 APP 129.925  
 134.850(HX)  
 TWR 118.105  
 ATIS 120.180

**RIGA (EVRA)**  
**ILS RWY 18**

**MISSED APPROACH**

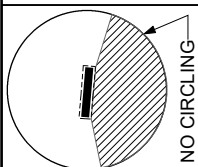
Climb on runway track to 2500, after passing 1500 radar vectoring will be provided.

**COM FAILURE** see EVRAAD 2.22

**ILS RDH 52**
**THR ELEV 33**

NM from THR RWY 18															4	3	2	1	0	0.4	1	2	3	4	4.4	5	6	7
Aircraft Category		A										DME IRV	7	6	5	4	3	2	1									
Straight-in Approach OCA(H)	ILS Cat I	233 (200)										DME RIA	7.9	6.9	5.9	4.9	3.9	2.9	1.9									
												DIST THR	7	6	5	4	3	2	1									
Circling		530 (500)										ALTITUDE	2360	2030	1700	1380	1050	730	410									
 <div>NO CIRCLING</div>		<div>REMARK:</div> <div><div></div> - JURMALA 1, 2 - noise abatement areas (Ref. EVRAAD 2.21)</div> <div>HX - No specific working hours</div>										HEIGHT	(2227)	(1997)	(1667)	(1347)	(1017)	(697)	(377)									
												GS		Kt	80	100	120	140	160	180								
												Rate of descent		ft/min	420	530	640	740	850	960								

**REMARK:**

 - JURMALA 1, 2 - noise abatement areas (Ref. EVRAAD 2.21)  
 HX - No specific working hours


Changes: JURMALA ATZ withdrawn.

*INTENTIONALLY LEFT BLANK*