

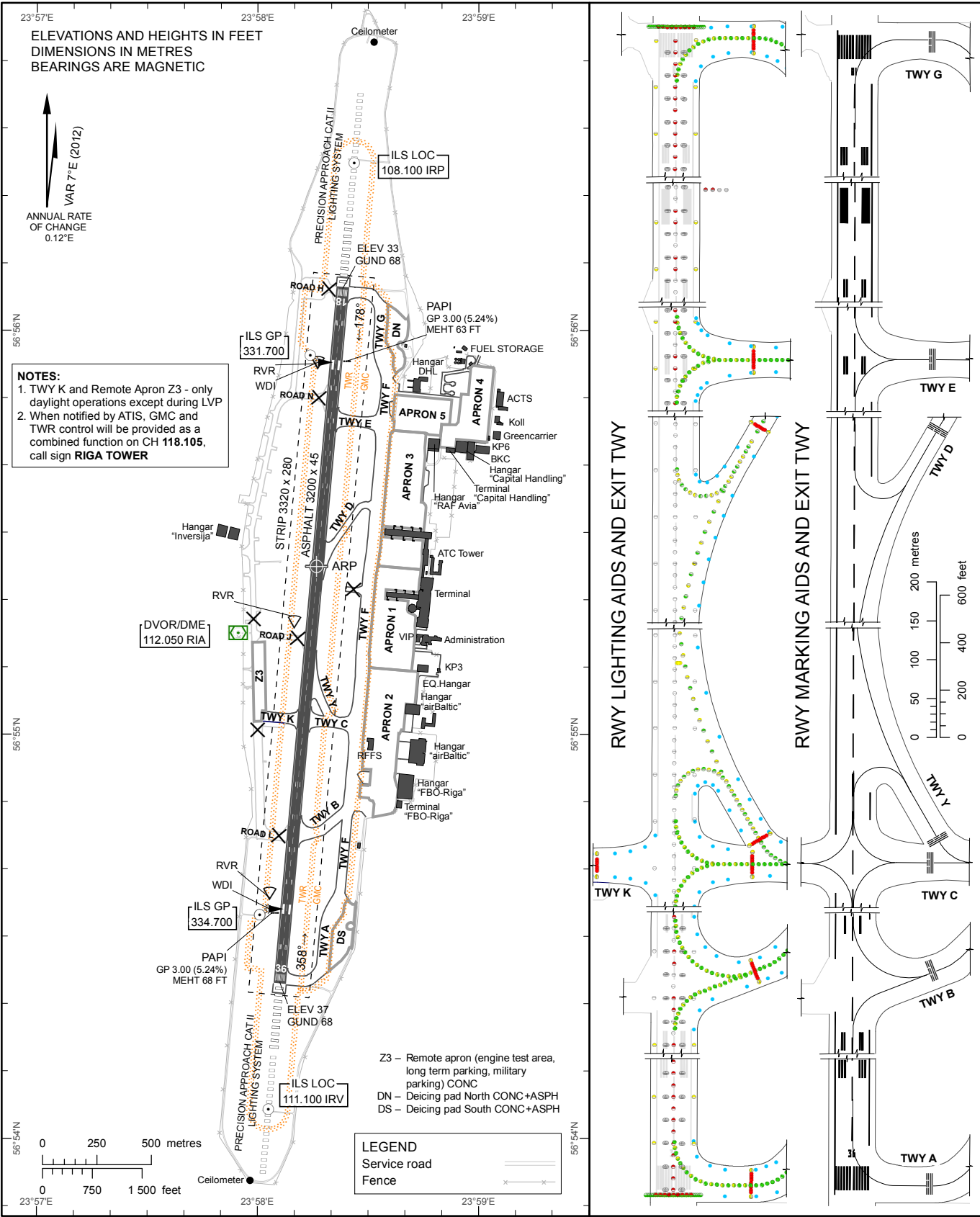
AERODROME CHART – ICAO

56°55'25"N  
023°58'16"E

ELEV 37 FT

TWR	118.105
GMC	118.805
APRON	131.605
ATIS	120.180

RIGA



Changes: TWY Y established, ATC service boundary, guidance lines, RWY holding position, markings, lights, notes, remarks updated, building added, editorial.

*INTENTIONALLY LEFT BLANK*