

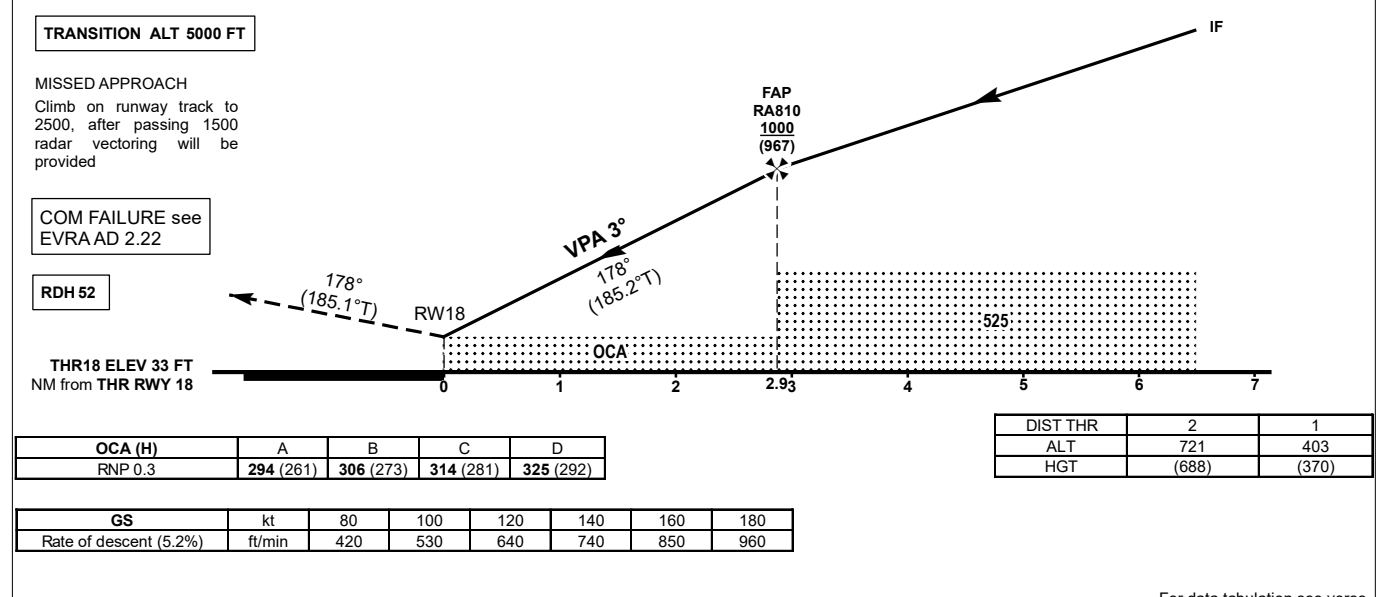
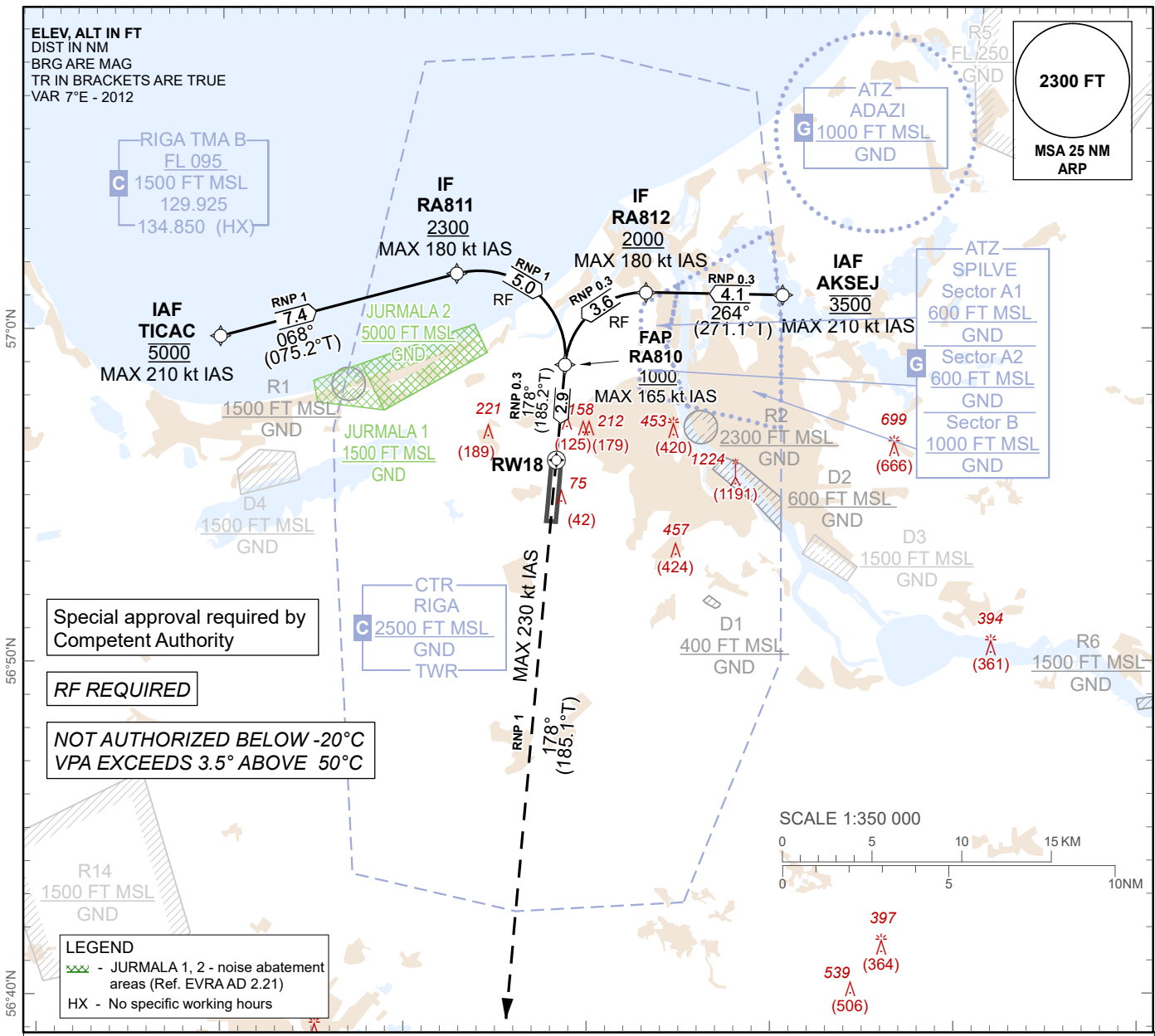
**INSTRUMENT  
APPROACH  
CHART - ICAO**

**AERODROME ELEV 37 ft**  
HEIGHTS RELATED TO  
THR RWY 18 - ELEV 33 ft

APP 129.925  
134.850 (HX)  
TWR 118.105  
ATIS 120.180

**RIGA (EVRA)**

**RNP Z RWY 18 (AR)**



Changes: Circling withdrawn.

For data tabulation see verso

RIGA (EVRA)

RNP Z RWY 18 (AR)

AERONAUTICAL DATA TABULATION

TABULAR DESCRIPTION

RNP Z RWY 18 (AR)											
Serial Number	Path Descriptor	Waypoint Identifier	Flyover	Course °M(T)	Magnetic Variation(°)	Distance NM	Turn Direction	Altitude FT	Speed KT	VPA (°)	Navigation Specification
10	IF	AKSEJ	-	-	-	-	-	3500	-210	-	RNP 0.3
20	TF	RA812	-	264 (271.1)	+7.0	4.1	-	+2000	-180	-3.4	RNP 0.3
30	RF Centre: RA821 r = 2.4 NM	RA810	-	264 (271.2)	+7.0	3.6	L	+1000	-165	-2.6	RNP 0.3
10	IF	TICAC	-	-	-	-	-	5000	-210	-	RNP 1
20	TF	RA811	-	068 (075.2)	+7.0	7.4	-	+2300	-180	-3.5	RNP 1
30	RF Centre: RA820 r = 2.6 NM	RA810	-	068 (075.1)	+7.0	5.0	R	+1000	-165	-2.5	RNP 1
40	TF	RW18	Y	178 (185.2)	+7.0	2.9	-			-3	RNP 0.3
50	CA	-	-	178 (185.1)	+7.0	-	-	+2500	-230	+1.4	RNP 1

WAYPOINT LIST

RNP Z RWY 18 (AR)		
Waypoint Identifier	Coordinates	
AKSEJ	57°01'03.24"N	024°10'50.30"E
RA812	57°01'08.23"N	024°03'18.89"E
RA810	56°58'57.60"N	023°58'51.42"E
TICAC	56°59'48.40"N	023°39'54.20"E
RA811	57°01'41.94"N	023°52'53.96"E
RW18	56°56'06.25"N	023°58'23.08"E
RF Arc Centre Identifier	Coordinates	
RA821	56°58'44.58"N	024°03'13.50"E
RA820	56°59'11.53"N	023°54'07.44"E