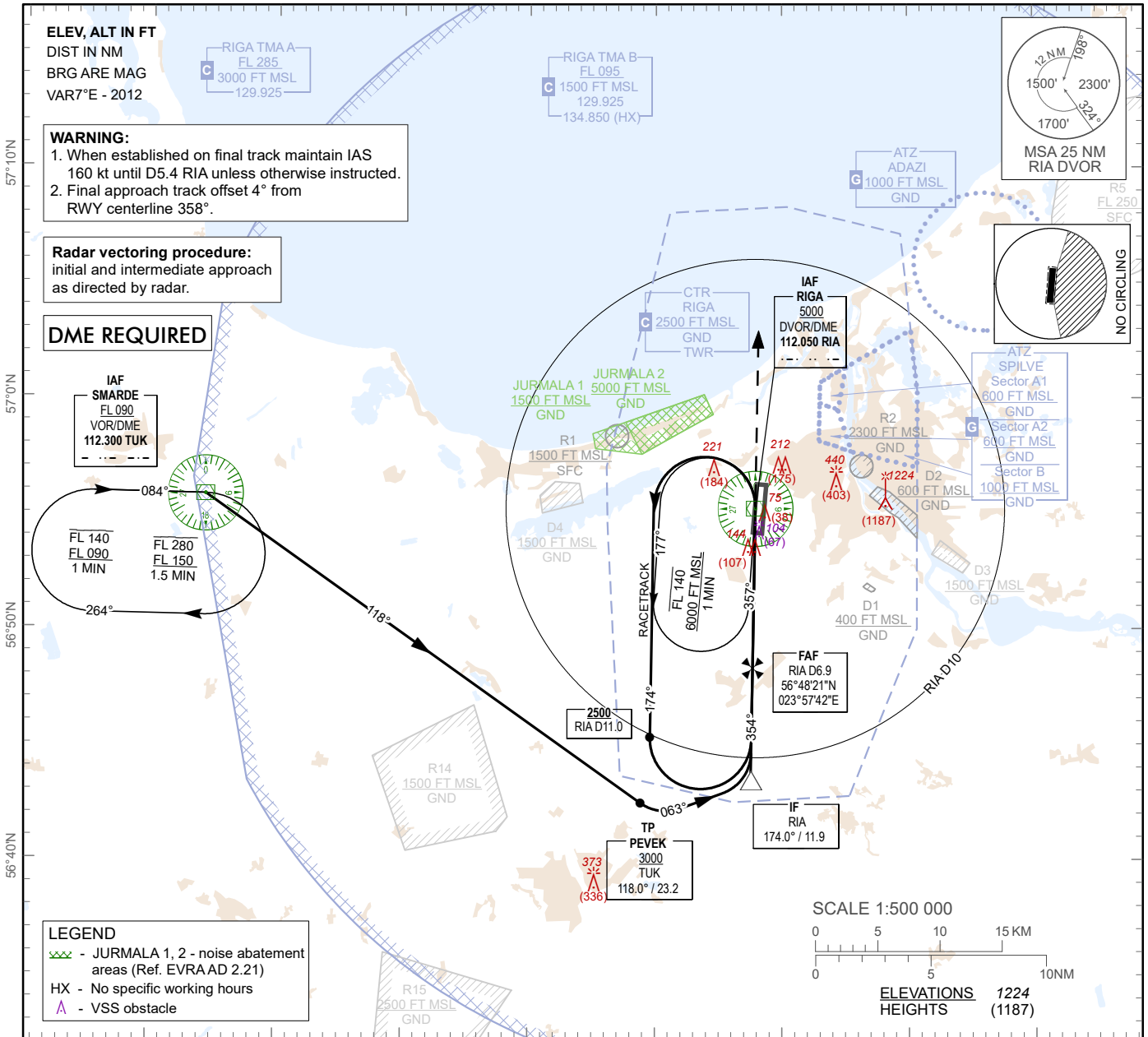


**INSTRUMENT
APPROACH
CHART - ICAO**

AERODROME ELEV 37ft
**HEIGHTS RELATED TO
AD - ELEV 37 ft**

APP 129.925
134.850 (HX)
TWR 118.105
ATIS 120.180

RIGA (EVRA)
VOR RWY 36

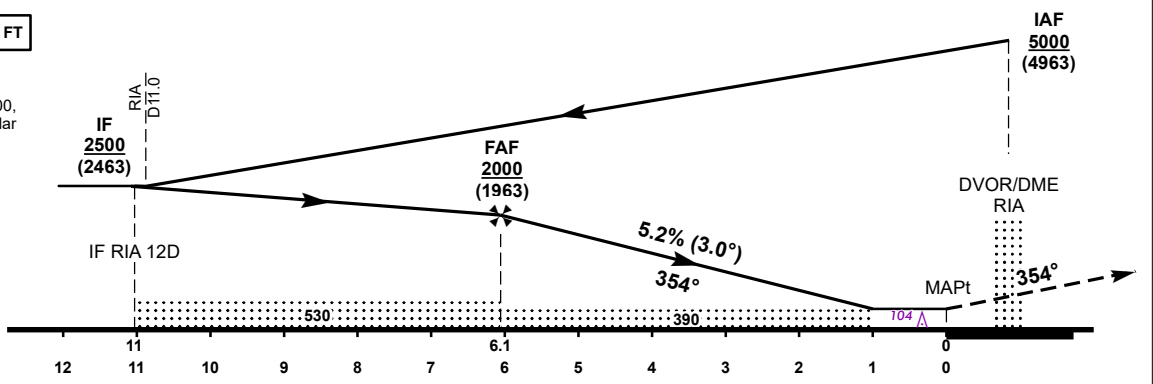


TRANSITION ALT 5000 FT

MISSED APPROACH
Climb on R-354° to 2500, after passing 1500 radar vectoring will be provided.

COM FAILURE see EVRA AD 2.22

THR ELEV 37 FT
NM from THR RWY 36



OCA (H)		A	B	C	D
Straight-in Approach	VOR/DME	390 (360)			
Circling		530 (500)	630 (600)	730 (690)	

DME RIA	5.9	4.9	3.9	2.9	1.9
DIST THR	5	4	3	2	1
ALT	1680	1360	1040	720	410
HGT	(1643)	(1323)	(1003)	(683)	(373)

Timing not authorized for defining the MAPt

GS	kt	80	100	120	140	160	180
Rate of descent (5.2%)	ft/min	420	530	640	740	850	960
FAF-MAPT (6.1 NM)	min:sec	04:58	03:40	03:03	02:37	02:17	02:02

For data tabulation see verso

Changes: racetrack outbound heading updated, editorial.

RIGA (EVRA)

VOR RWY 36

AERONAUTICAL DATA TABULATION

VOR approach to RWY36 from RIA DVOR/DME (IAF), TUK VOR/DME (IAF)	
Fix/point	Coordinates
RIA DVOR/DME (IAF)	56°55'15.1"N 023°57'54.7"E
TUK VOR/DME (IAF)	56°55'50.1"N 023°14'23.9"E
PEVEK (TP) R118.00° D23.16 TUK	56°42'29.7"N 023°48'50.1"E
(IF) RIA D11.92 RIA R174.00°	56°43'21.4"N 023°57'32.0"E
(FAF) RIA D6.92 RIA R174.00°	56°48'20.9"N 023°57'41.5"E
(MAPT) RIA D0.86 RIA R174.00°	56°54'23.6"N 023°57'53.1"E
THR RWY 36	56°54'23.22"N 023°58'06.08"E
Final approach descent angle is 2.98°	