

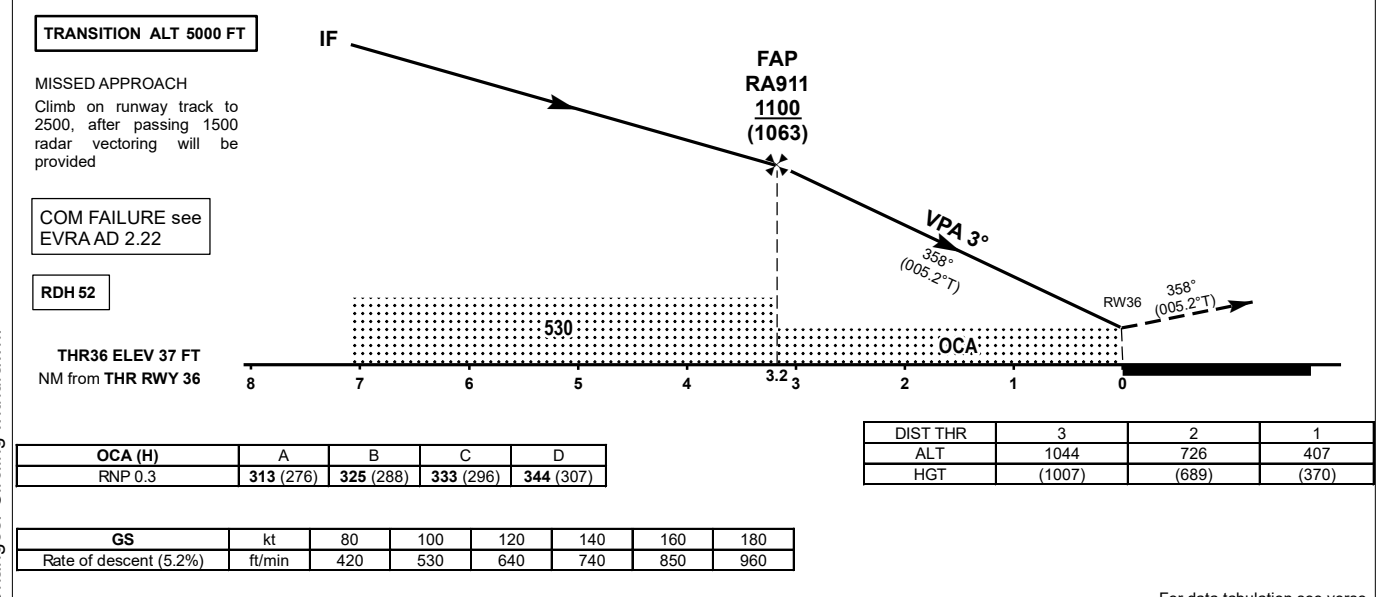
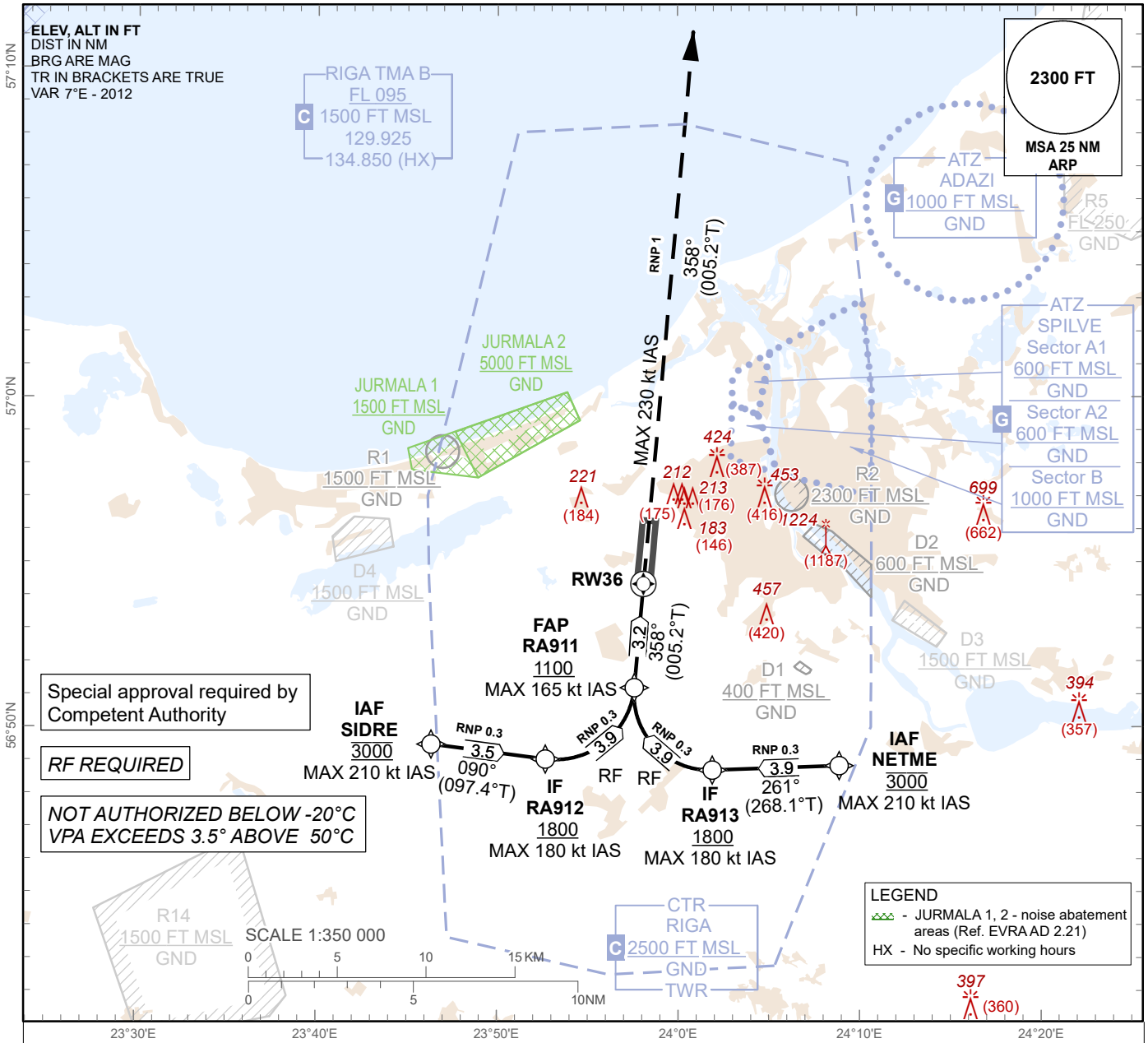
**INSTRUMENT
APPROACH
CHART - ICAO**

AERODROME ELEV 37 ft
HEIGHTS RELATED TO
THR RWY 36 - ELEV 37 ft

APP 129.925
134.850 (HX)
TWR 118.105
ATIS 120.180

RIGA (EVRA)

RNP Z RWY 36 (AR)



Changes: Circling withdrawn.

For data tabulation see verso

RIGA (EVRA)

RNP Z RWY 36 (AR)

AERONAUTICAL DATA TABULATION

TABULAR DESCRIPTION

RNP Z RWY 36 (AR)											
Serial Number	Path Descriptor	Waypoint Identifier	Fly-over	Course °M (°T)	Magnetic Variation (°)	Distance NM	Turn Direction	Altitude FT	Speed KT	VPA (°)	Navigation Specification
10	IF	SIDRE	-	-	-	-	-	3000	-210	-	RNP 0.3
20	TF	RA912	-	090 (097.4)	+7.0	3.5	-	+1800	-180	-3.2	RNP 0.3
30	RF Centre: RA920 r = 2.4 NM	RA911	-	090 (097.3)	+7.0	3.9	L	+1100	-165	-1.7	RNP 0.3
10	IF	NETME	-	-	-	-	-	3000	-210	-	RNP 0.3
20	TF	RA913	-	261 (268.1)	+7.0	3.9	-	+1800	-180	-2.9	RNP 0.3
30	RF Centre: RA921 r = 2.3 NM	RA911	-	261 (268.1)	+7.0	3.9	R	+1100	-165	-1.7	RNP 0.3
40	TF	RW36	Y	358 (005.2)	+7.0	3.2	-	-	-	-3	RNP 0.3
50	CA	-	-	358 (005.2)	+7.0	-	-	+2500	-230	+1.4	RNP 1

WAYPOINT LIST

RNP Z RWY 36 (AR)		
Waypoint Identifier	Coordinates	
SIDRE	56°49'31.08"N	023°46'20.70"E
RA912	56°49'04.20"N	023°52'40.23"E
RA911	56°51'13.92"N	023°57'34.95"E
NETME	56°48'51.49"N	024°08'54.70"E
RA913	56°48'43.88"N	024°01'53.50"E
RW36	56°54'23.22"N	023°58'06.08"E
RF Arc Centre Identifier	Coordinates	
RA920	56°51'26.72"N	023°53'13.70"E
RA921	56°51'01.51"N	024°01'45.25"E