

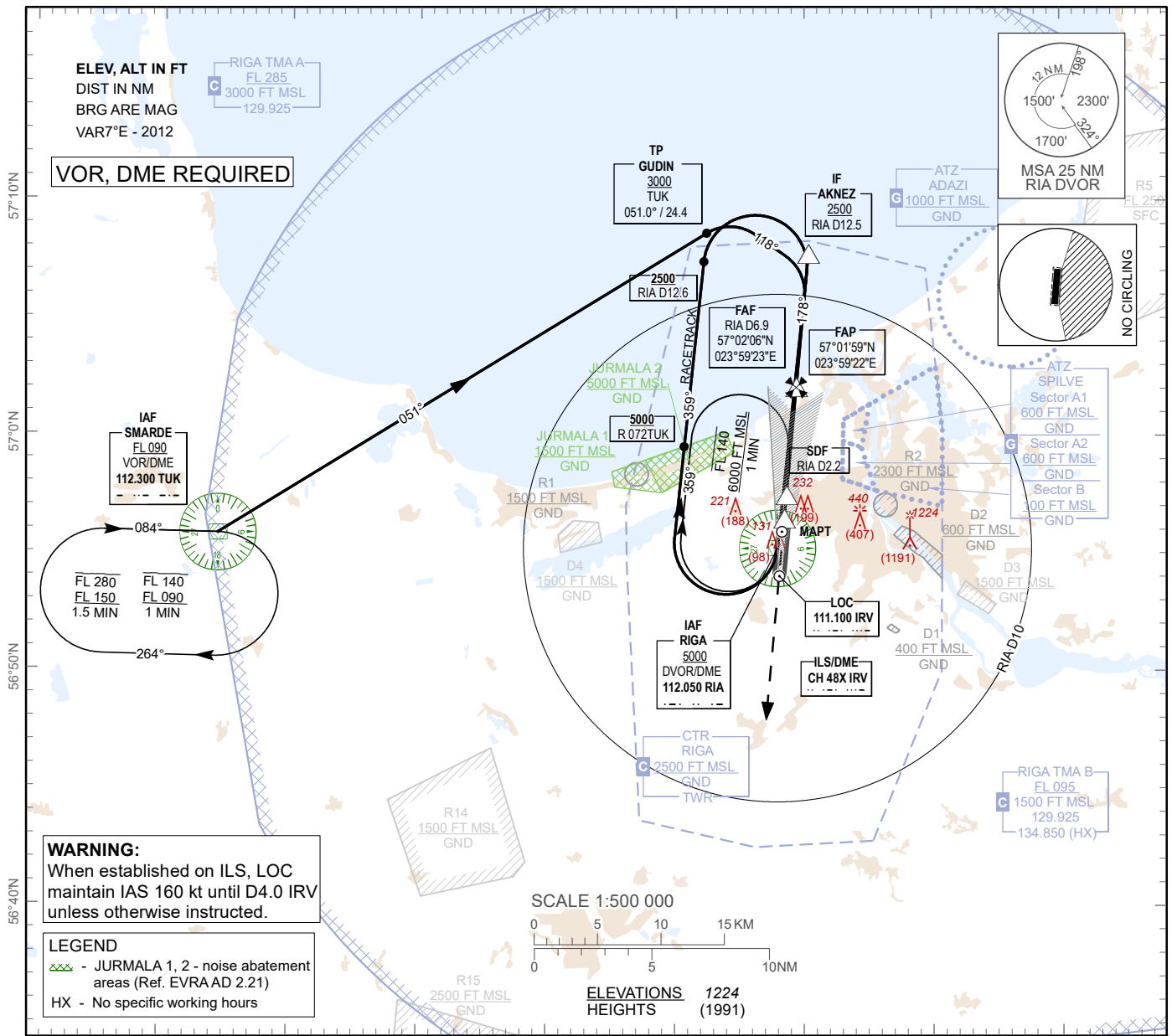
**INSTRUMENT
APPROACH
CHART - ICAO**

**AERODROME ELEV 37ft
HEIGHTS RELATED TO
THR RWY 18 - ELEV 33 ft**

APP 129.9250
134.850 (HX)
TWR 118.105
ATIS 120.180

RIGA (EVRA)

ILS Z or LOC Z RWY 18



RIGA (EVRA)

ILS Z or LOC Z RWY 18

AERONAUTICAL DATA TABULATION

ILS Z or LOC Z approach to RWY18 from RIA DVOR/DME (IAF), TUK VOR/DME (IAF)	
Fix/point	Coordinates
RIA DVOR/DME (IAF)	56°55'15.1"N 023°57'54.7"E
TUK VOR/DME (IAF)	56°55'50.1"N 023°14'23.9"E
GUDIN (TP) R051.00° D24.40 TUK	57°08'38.9"N 023°52'24.0"E
FAP (ILS)	57°01'59.2"N 023°59'21.5"E
FAF RIA D6.91 (LOC)	57°02'05.6"N 023°59'22.6"E
SDF RIA D2.20 (LOC)	56°57'24.6"N 023°58'36.1"E
MAPT RIA D1.19 (LOC)	56°56'24.1"N 023°58'26.1"E
THR RWY 18	56°56'06.25"N 023°58'23.08"E
IRV LOC	56°54'04.3"N 023°58'03.0"E
Final approach descent angle is 3.00°	