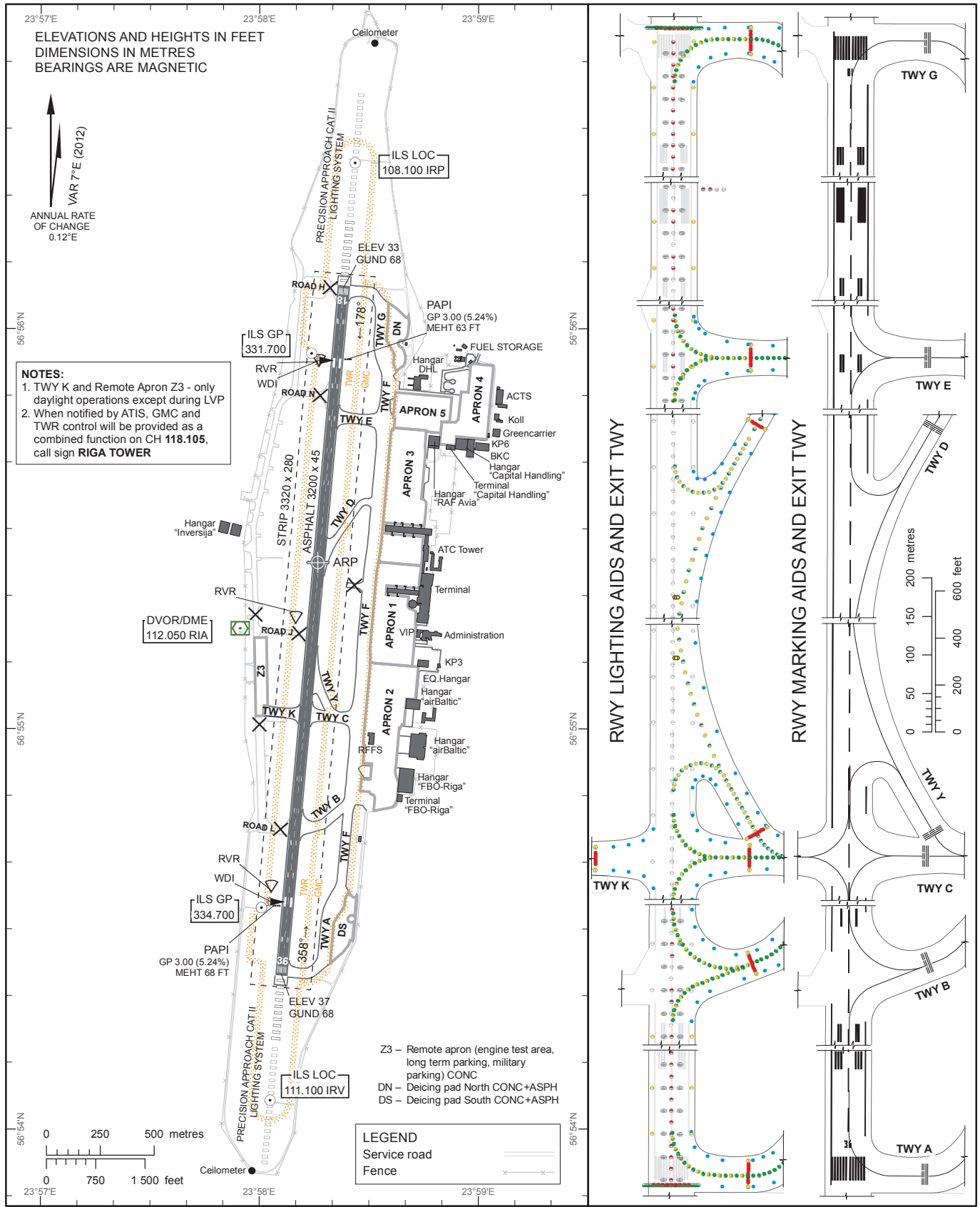


AERODROME CHART – ICAO

56°55'25"N  
023°58'16"E ELEV 37 FT

TWR	118.105
GMC	118.805
APRON	131.605
ATIS	120.180

RIGA



ELEVATIONS AND HEIGHTS IN FEET  
DIMENSIONS IN METRES  
BEARINGS ARE MAGNETIC



**NOTES:**  
1. TWY K and Remote Apron Z3 - only daylight operations except during LVP  
2. When notified by ATIS, GMC and TWR control will be provided as a combined function on CH 118.105, call sign RIGA TOWER

Z3 – Remote apron (engine test area, long term parking, military parking) CONC  
DN – Deicing pad North CONC+ASPH  
DS – Deicing pad South CONC+ASPH

**LEGEND**  
Service road  
Fence

RWY	TRUE DIRECTION	THR	BEARING STRENGTH		
18	185.16°	56°56'06.25"N 023°58'23.08"E	RWY TWY A,B,C,G	ASPH	PCN 110/F/A/W/T
			TWY D	ASPH	PCN 90/F/C/W/U
			TWY E	ASPH	PCN 88/F/C/W/T
			TWY F	ASPH	PCN 90/F/C/W/U
			TWY K	CONC+ASPH	PCN 90/F/C/W/U
36	005.15°	56°54'23.22"N 023°58'06.08"E	TWY Y	ASPH	PCN 61/F/C/X/U
			TWY X	ASPH	PCN 77 F/B/X/T
			TWY Z	ASPH	PCN 77 F/B/X/T

**Remarks:**  
1. APPROACH and RWY lighting see EVRA AD 2.14  
2. RWY marking see EVRA AD 2.9  
3. The rapid-exit TWY D is designed for code C (max. wingspan 36 m) or smaller ACFT.  
4. The rapid-exit TWY Y when using RWY 36 is designed for code C (max. wingspan 36 m) or smaller ACFT.

Changes: remarks updated.

*INTENTIONALLY LEFT BLANK*