

STANDARD DEPARTURE CHART - INSTRUMENT (SID) - ICAO

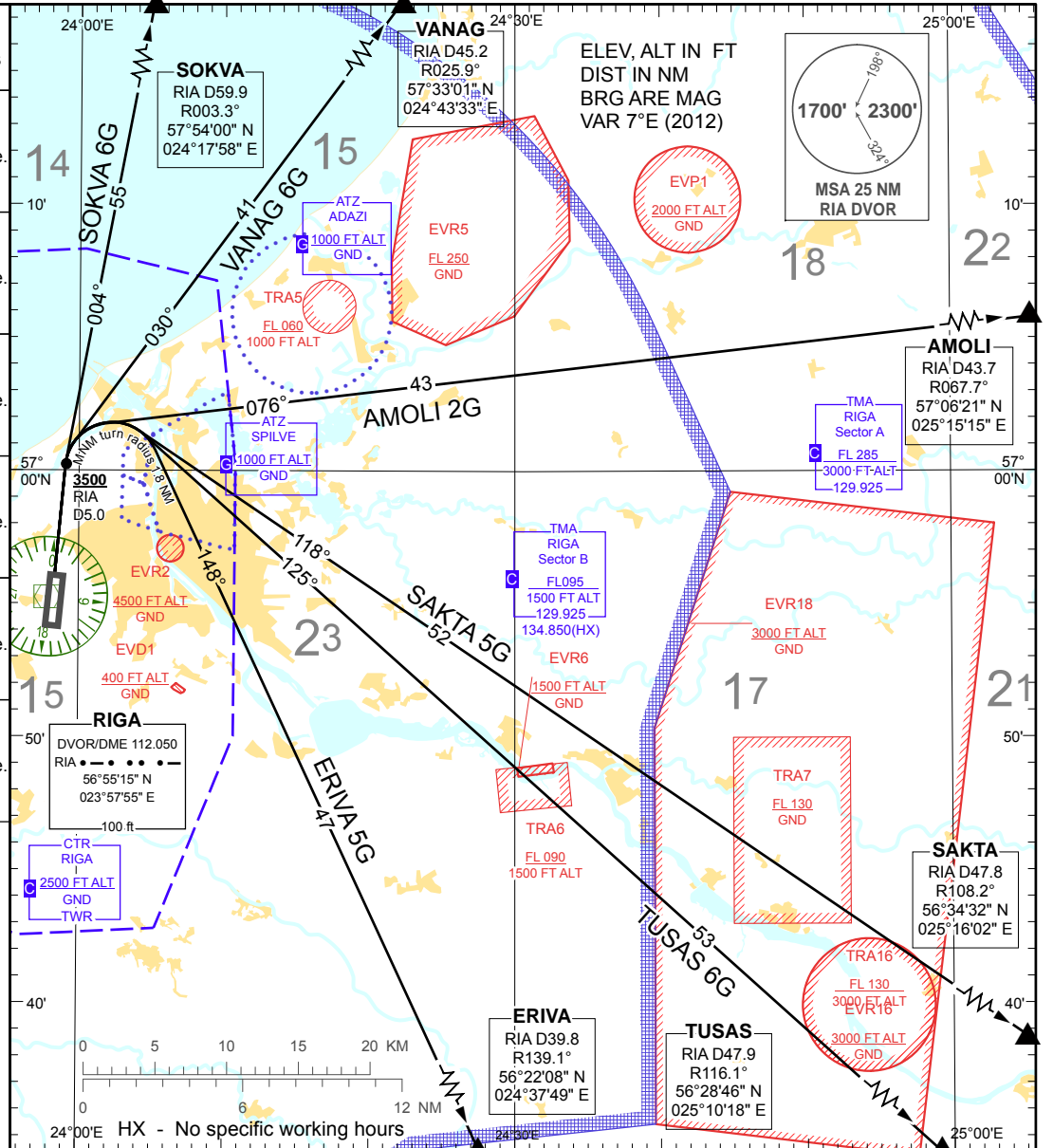
TRANSITION ALTITUDE
5000 ft

APP 129.925
134.850(HX)
TWR 118.100
ATIS 120.175
ACC 133.200

**RIGA (EVRA)
RWY 36**
(direction EAST)

AMOLI 2G ERIVA 5G SAKTA 5G
SOKVA 6G TUSAS 6G VANAG 6G

Coded designator	Plain language designator / Routing	Procedure Design Gradients (PDG) & Altitudes
AMOLI 2G	AMOLI TWO GOLF DEPARTURE Climb straight ahead on TR 358°. Not before 5.0 DME RIA at or above 3500 FT turn right (MNM turn radius 1.8 NM). Establish TR 076°. Proceed to AMOLI.	PDG 7.0% to 4000 FT to avoid unnecessary noise disturbance. PDG 3.3% to be clear of obstacles.
ERIVA 5G	ERIVA FIVE GOLF DEPARTURE Climb straight ahead on TR 358°. Not before 5.0 DME RIA at or above 3500 FT turn right (MNM turn radius 1.8 NM). Establish TR 148°. Proceed to ERIVA	PDG 7.0% to 4000 FT to avoid unnecessary noise disturbance. PDG 3.3% to be clear of obstacles.
SAKTA 5G	SAKTA FIVE GOLF DEPARTURE Climb straight ahead on TR 358°. Not before 5.0 DME RIA at or above 3500 FT turn right (MNM turn radius 1.8 NM). Establish TR 118°. Proceed to SAKTA.	PDG 7.0% to 4000 FT to avoid unnecessary noise disturbance. PDG 3.3% to be clear of obstacles.
SOKVA 6G	SOKVA SIX GOLF DEPARTURE Climb straight ahead on TR 358°. Not before 5.0 DME RIA at or above 3500 FT turn right (MNM turn radius 1.8 NM). Establish TR 004°. Proceed to SOKVA.	PDG 5.0% to 4000 FT to avoid unnecessary noise disturbance. PDG 3.3% to be clear of obstacles.
TUSAS 6G	TUSAS SIX GOLF DEPARTURE Climb straight ahead on TR 358°. Not before 5.0 DME RIA at or above 3500 FT turn right (MNM turn radius 1.8 NM). Establish TR 125°. Proceed to TUSAS.	PDG 7.0% to 4000 FT to avoid unnecessary noise disturbance. PDG 3.3% to be clear of obstacles.
VANAG 6G	VANAG SIX GOLF DEPARTURE Climb straight ahead on TR 358°. Not before 5.0 DME RIA at or above 3500 FT turn right (MNM turn radius 1.8 NM). Establish TR 030°. Proceed to VANAG.	PDG 5.0% to 4000 FT to avoid unnecessary noise disturbance. PDG 3.3% to be clear of obstacles.



For detailed description of the conditions and flights procedures refer to AIP EVRA AD 2.22.

- NOTE:**
1. Initial climb clearance 4000 FT unless otherwise is instructed by TWR;
 2. Contact APP not later than passing 1500 ft after take-off;
 3. Contact APP on 129.925 unless other frequency assigned by TWR;
 4. MAX IAS 250 kt below FL 100;
 5. If unable to comply SID contact ATC.

Changes: ATZ LIELVARDE (Military), EVR19 withdrawn.

INTENTIONALLY LEFT BLANK