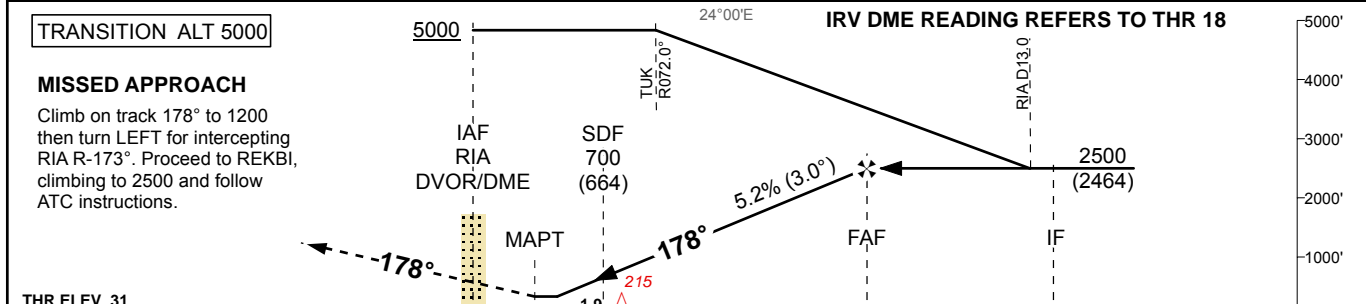
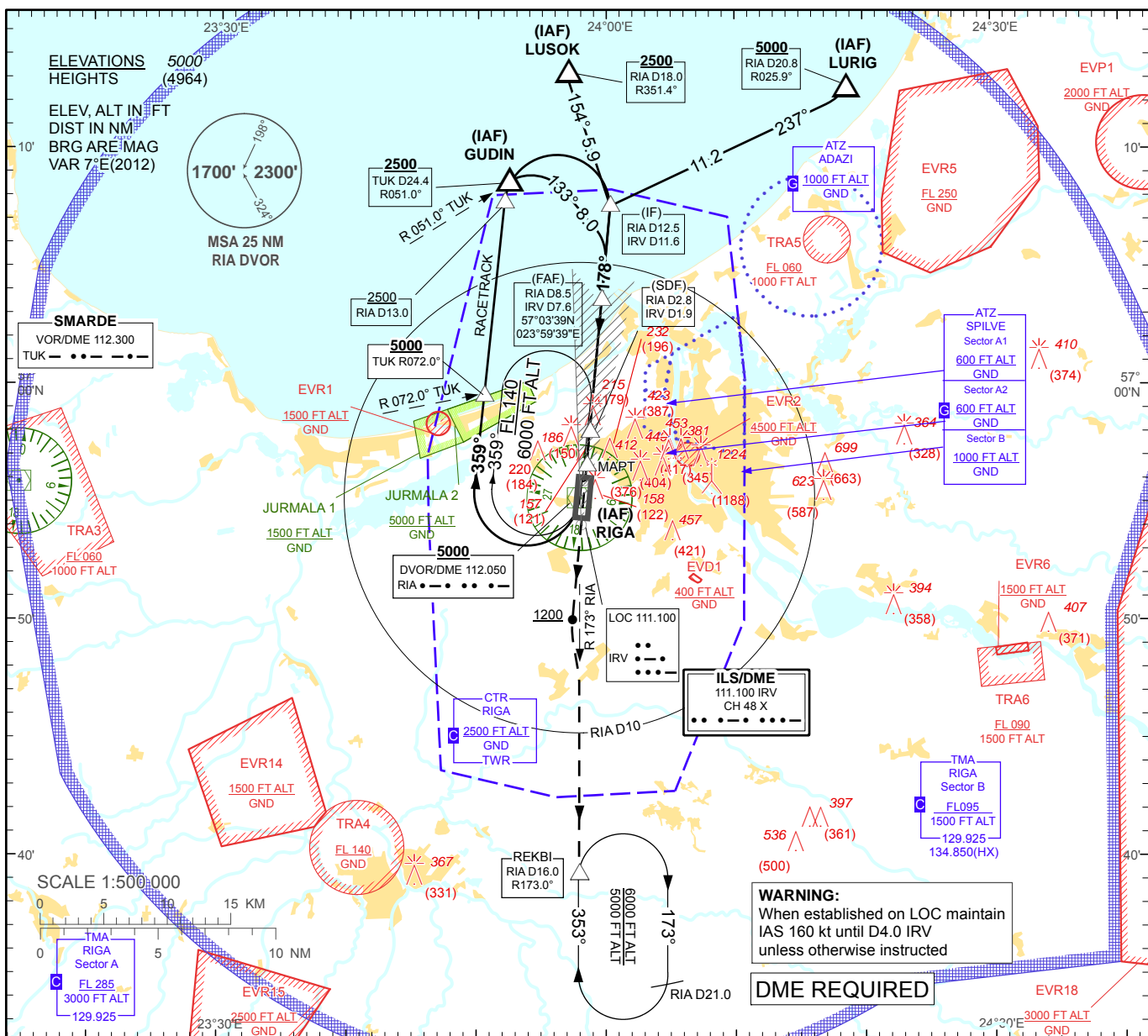


**INSTRUMENT
APPROACH
CHART - ICAO**

AERODROME ELEV 36'
HEIGHTS RELATED TO
AD - ELEV 36'

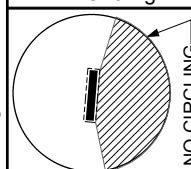
APP 129.925
134.850(HX)
TWR 118.100
ATIS 120.175

RIGA (EVRA)
LOC RWY 18



THR ELEV 31

Aircraft Category		A	B	C	D	DME IRV	7	6	5	4	3	2	1
Straight-in Approach OCA(H)	LOC	410 (370)				DME RIA	7.9	6.9	5.9	4.9	3.9	2.9	1.9
						DIST THR	7	6	5	4	3	2	1
Circling		530 (500)		730 (690)		ALTITUDE	2310	1990	1670	1350	1040	720	400
						HEIGHT	(2274)	(1954)	(1634)	(1314)	(1004)	(684)	(364)
Timing not authorized for defining the MAPT													
		GS	Kt	80	100	120	140	160	180				
		Rate of descent (5.2%)	ft/min	420	530	640	740	850	960				
		FAF-MAPT(7.1 NM)	min:sec	05:20	04:16	03:33	03:03	02:40	02:22				



REMARK:
— - JURMALA 1, 2 - noise abatement areas (Ref. EVRAAD 2.21)
 HX - No specific working hours

WARNING:
When established on LOC maintain IAS 160 kt until D4.0 IRV unless otherwise instructed

DME REQUIRED

Changes: ATZ LIELVARDE (Military) withdrawn.

RIGA (EVRA)

LOC RWY 18

AERONAUTICAL DATA TABULATION

LOC approach to RWY18 from RIA DVOR/DME, GUDIN, LURIG, LUSOK	
Fix/point	Coordinates
RIA DVOR/DME (IAF)	56°55'15.1"N 023°57'54.7"E
GUDIN (IAF) R051.00° D24.41 TUK	57°08'38.9"N 023°52'24.0"E
LURIG (IAF) R025.92° D20.78 RIA	57°12'37.6"N 024°18'40.4"E
LUSOK (IAF) R351.43° D18.05 RIA	57°13'15.3"N 023°57'00.1"E
RIA D12.47 IRV D11.60 (IF)	57°07'37.4"N 024°00'18.6"E
RIA D8.48 IRV D7.60 (FAF)	57°03'39.5"N 023°59'38.7"E
RIA D2.83 IRV D1.95 (SDF)	56°58'02.3"N 023°58'42.5"E
RIA D1.39 IRV D0.50 (MAPT)	56°56'36.1"N 023°58'28.1"E
REKBI (Holding) R172.99° D16.01 RIA	56°39'16.7"N 023°57'55.0"E
THR RWY 18	56°56'06.25"N 023°58'23.07"E
IRV LOC	56°54'04.3"N 023°58'03.0"E
TUK VOR/DME	56°55'50.1"N 023°14'23.9"E
Final approach descent angle is 3.00°	