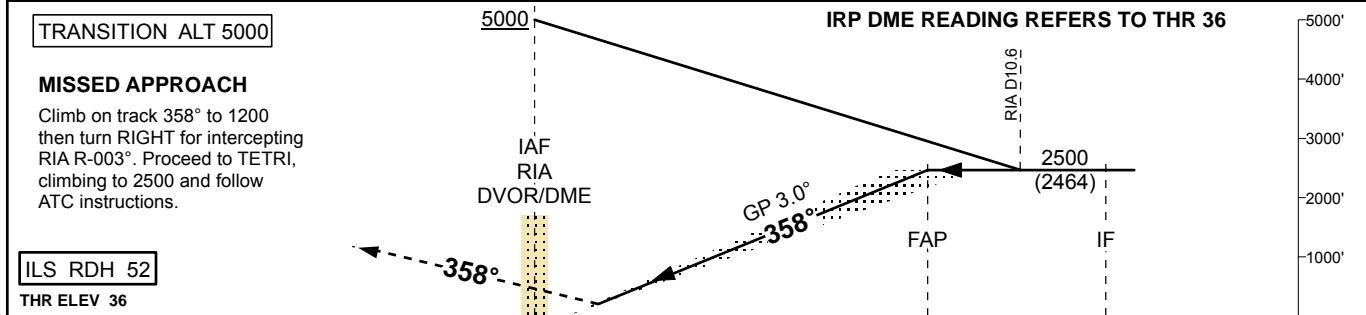
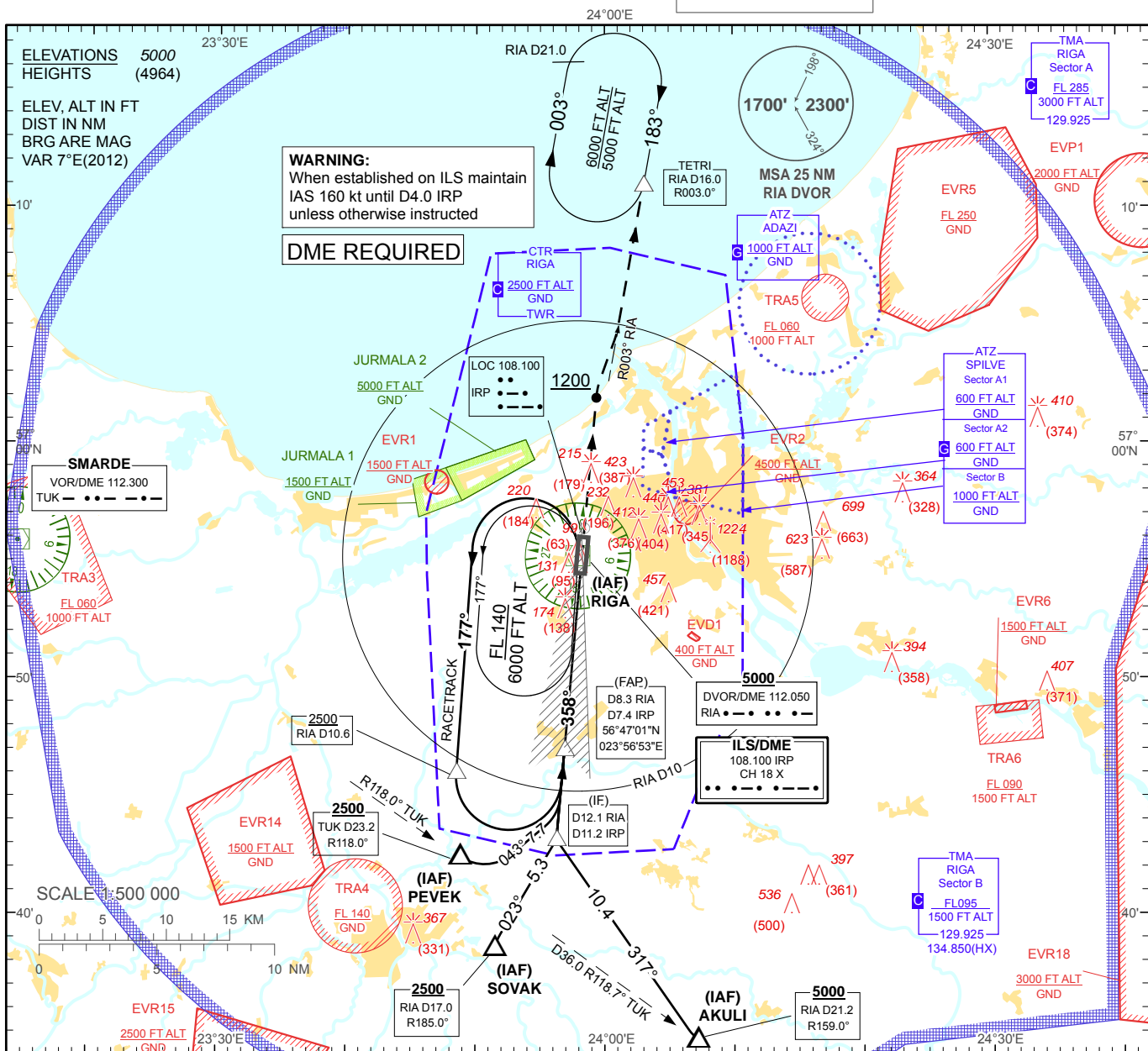


**INSTRUMENT
APPROACH
CHART - ICAO**

AERODROME ELEV 36'
HEIGHTS RELATED TO
THR RWY 36 - ELEV 36'

APP 129.925
134.850(HX)
TWR 118.100
ATIS 120.175

RIGA (EVRA)
ILS RWY 36 (CAT I & II)



TRANSITION ALT 5000

MISSED APPROACH
Climb on track 358° to 1200 then turn RIGHT for intercepting RIA R-003°. Proceed to TETRI, climbing to 2500 and follow ATC instructions.

ILS RDH 52
THR ELEV 36

		IRP DME READING REFERS TO THR 36																						
		5000'																						
		2500' (2464)																						
		358°																						
		GP 3.0°																						
		FAP																						
		IF																						
		RIA D10.6																						
NM from THR RWY 36		8	7	6	5	4	3	2	1	0	1	2	3	4	5	6	7.4	8	9	10	11.2	12	13	14
Aircraft Category		A	B	C	D	DME IRP	7	6	5	4	3	2	1											
Straight-in Approach OCA(H)	ILS Cat. I	236 (200)				DME RIA	7.9	6.9	5.9	4.9	3.9	2.9	1.9											
	ILS Cat. II	97 (61)	115 (79)	127 (91)	142 (106)	DIST THR	7	6	5	4	3	2	1											
Circling		530 (500)				730 (690)				ALTITUDE	2360	2030	1700	1380	1050	730	410							
										HEIGHT	(2324)	(1994)	(1664)	(1344)	(1014)	(694)	(374)							
		For data tabulation see verso																						
		GS	Kt	80	100	120	140	160	180															
		Rate of descent	ft/min	420	530	640	740	850	960															

REMARK:
 - JURMALA 1, 2 - noise abatement areas (Ref. EVRA AD 2.21)
 HX - No specific working hours

Changes: ATZ LIELVARDE (Military) withdrawn.

RIGA (EVRA)

ILS RWY 36

AERONAUTICAL DATA TABULATION

ILS approach to RWY36 from RIA DVOR/DME, AKULI, PEVEK, SOVAK	
Fix/point	Coordinates
RIA DVOR/DME (IAF)	56°55'15.1"N 023°57'54.7"E
AKULI (IAF) R118.68° D35.95 TUK	56°34'43.5"N 024°07'12.3"E
PEVEK (IAF) R118.00° D23.17 TUK	56°42'29.7"N 023°48'50.1"E
SOVAK (IAF) R184.95° D17.02 RIA	56°38'37.8"N 023°51'31.5"E
RIA D8.28 IRP D7.42 (FAP)	56°47'00.6"N 023°56'53.2"E
RIA D12.09 IRP D11.24 (IF)	56°43'13.0"N 023°56'15.9"E
TETRI (Holding) R003.00° D16.00 RIA	57°10'58.4"N 024°03'01.1"E
THR RWY 36	56°54'23.22"N 023°58'06.08"E
IRP LOC	56°56'24.9"N 023°58'26.2"E
TUK VOR/DME	56°55'50.1"N 023°14'23.9"E