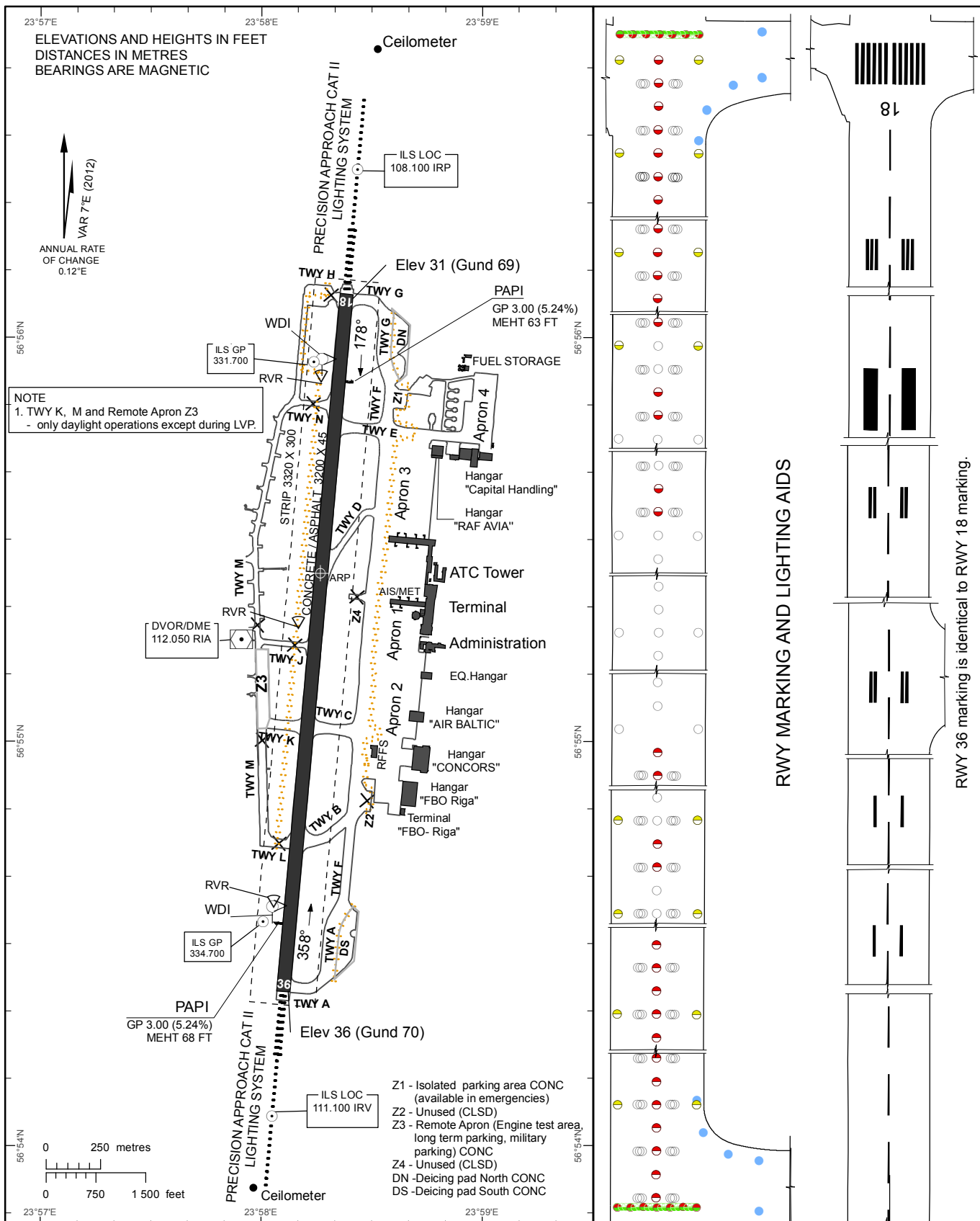


AERODROME CHART - ICAO

56°55'25"N
023°58'16"E ELEV 36'

TWR	118.100
GMC	118.800
APRON	131.600
ATIS	120.175

RIGA



Changes: Editorial.

RWY	TRUE DIRECTION	THR	BEARING STRENGTH	
			PCN	runways and taxiways A, E
18	185.18°	56°56'06.25"N 023°58'23.07"E	PCN 89/F/C/X/T	runways and taxiways A, E
			PCN 84/F/A/W/T	taxiways B, K
			PCN 89/F/C/W/T	taxiway C
36	005.17°	56°54'23.22"N 023°58'06.08"E	PCN 50/F/C/X/T	taxiway D
			PCN 64/F/A/W/T	taxiway F
			PCN 100/F/C/X/T	taxiway G
			PCN 50/R/B/W/U	taxiway M
			PCN 50/R/B/W/U	taxiway M

Remarks:

1. APPROACH and RWY lighting see EVRA AD 2.14
2. RWY marking see EVRA AD 2.9
3. The rapid-exit TWY D and TWY M are designed for Code C (max.wingspan 36m) or smaller ACFT.

INTENTIONALLY LEFT BLANK