

Note: The following sections in this chapter are intentionally left blank: AD-2.16

### EVRA AD 2.1 AERODROME LOCATION INDICATOR AND NAME

#### EVRA - RIGA

### EVRA AD 2.2 AERODROME GEOGRAPHICAL AND ADMINISTRATIVE DATA

1	ARP coordinates and site at AD	565525N 0235816E On the axis of runway
2	Direction and distance from city	255°, 5.4 NM W of Riga
3	Elevation/Reference temperature	36 FT/ 18° C
4	Geoid undulation at AD ELEV PSN	69 FT
5	MAG VAR/Annual change	7°E (2012) 0.12° increasing
6	AD operator, address, telephone, telefax, telex, AFS	SJSC "Riga International Airport" Post: Lidosta "Rīga" 10/1, Mārupes novads, LV-1053, Latvija Phone: +371 67207135 Fax: +371 67211767 Telex: NIL AFS: EVRAYDYD Email:office@riga-airport.com URL:http://www.riga-airport.com
7	Types of traffic permitted (IFR/VFR)	IFR-VFR
8	Remarks	NIL

### EVRA AD 2.3 OPERATIONAL HOURS

1	AD AD operator	H24 AD operator: 0600-1500 (0500-1400)
2	Customs and immigration	H24
3	Health and sanitation	H24
4	AIS Briefing Office	H24
5	ATS Reporting Office (ARO)	H24
6	MET Briefing Office	H24
7	ATS	H24
8	Fuelling	H24
9	Handling	H24
10	Security	H24
11	De-icing	H24 OCT-MAR (APR-SEP on prior request)
12	Remarks	NIL

**EVRA AD 2.4 HANDLING SERVICES AND FACILITIES**

1	<b>Cargo-handling facilities</b>	Standard/unitized aviation cargo up to 7 tons. Non-standard loads upon prior request.
2	<b>Fuel/oil types</b>	A1, AVGAS - 100LL/ NIL
3	<b>Fuelling facilities/capacity</b>	Jet A-1: 2 trucks 60000 litres/ 33 litres per sec. 2 trucks 40000 litres/ 41 litres per sec. 1 truck 38000 litres/ 40 litres per sec. 3 trucks 35000 litres/ 45 litres per sec. 2 trucks 20000 litres/ 25 litres per sec.  Up to 250 tons of Jet A-1 daily available without prior request. Underground fuel hydrant system installed on stands 102, 104-109 and 300-309.
4	<b>De-icing facilities</b>	Service provided by SIA "Latautoavia", AS "airBaltic Corporation" and SIA "Havas Latvia". 8 trucks in total.
5	<b>Hangar space for visiting aircraft</b>	Hangar space available up to Code C aircraft. Subject to prior request.
6	<b>Repair facilities for visiting aircraft</b>	AVBL on prior request
7	<b>Remarks</b>	Ground handling is mandatory for all flights. Ground handling service providers: - RIX Ground Handling Phone +371 29233018, handling@riga-airport.com, 131.800 MHz, 121.750 MHz - Havas Latvia Phone +371 27843576, rixgrd@havas.net, 131.500 MHz

**EVRA AD 2.5 PASSENGER FACILITIES**

1	<b>Hotels</b>	Near AD and in the city
2	<b>Restaurants</b>	At the AD and in the city
3	<b>Transportation</b>	Bus, taxi, rent a car
4	<b>Medical facilities</b>	First aid at the AD, hospitals in the city
5	<b>Bank and Post Office</b>	Bank NIL; Bank ATM, Currency Exchange and Post Office at AD
6	<b>Tourist Office</b>	Phone: +371 67207999 Fax: +371 67207999 Email: wtr@riga-airport.lv
7	<b>Remarks</b>	NIL

**EVRA AD 2.6 RESCUE AND FIRE FIGHTING SERVICES**

<b>1</b>	<b>AD category for fire fighting</b>	A8
<b>2</b>	<b>Rescue equipment</b>	Available 5 fire trucks.
<b>3</b>	<b>Capability for removal of disabled aircraft</b>	Equipment available within 24 hours
<b>4</b>	<b>Remarks</b>	Airport rescue and fire fighting service is certified to Category 9 upon prior request for cargo aircraft flying with crew only.

**EVRA AD 2.7 SEASONAL AVAILABILITY - CLEARING**

<b>1</b>	<b>Types of clearing equipment</b>	13 snow ploughs from those 3 spreaders, 8 cold air blowers, 1 liquid vacuum, 1 wheel loader, 1 snow blower
<b>2</b>	<b>Clearance priorities</b>	1.RWY; 2.TWY; 3.Apron
<b>3</b>	<b>Remarks</b>	Information on snow clearance published from OCT - APR in NOTAM (SNOWTAM). See also the Snow Plan section <a href="#">AD 1.2.2</a>

## EVRA AD 2.8 APRONS, TAXIWAYS AND CHECK LOCATIONS/POSITIONS DATA

1	<p><b>Apron surface and strength (see also <a href="#">EVRA AD 2.24.2-1</a>)</b></p>	<p><i>APRON 1</i>  Stands 101, 110, 112 CONC PCN 56/R/C/W/T  Stands 102-109 CONC PCN 64/R/A/W/T  Stand 100, 114 CONC PCN 77/R/C/W/T  Taxilane Q CONC PCN 77/R/C/W/T  Taxilane R CONC PCN 56/R/C/W/T  Taxilane S ASPH PCN 64/F/A/W/T  Taxilane T ASPH PCN 64/F/A/W/T</p> <p><i>APRON 2</i>  Stands 204-208 and 214-221 CONC PCN 56/R/C/W/T  Stands 224, 225, 227-229 CONC PCN 50/R/B/W/U  Stand 226 CONC PCN 64/R/A/W/U  Stands 290-292 CONC PCN 48/R/C/X/T  Taxilane C CONC PCN 77/R/C/W/T  Taxilane P (North) CONC PCN 56/R/C/W/T  Taxilane P (South) CONC PCN 75/R/B/W/U</p> <p><i>APRON 3</i>  Stands 300, 301, 303, 305, 307 CONC PCN 77/R/C/W/T  Stands 302, 304, 306, 308, 309 CONC PCN 56/R/C/W/T  Stands 311-317 and 312-327 CONC PCN 56/R/C/W/T  Taxilane U CONC PCN 56/R/C/W/T  Taxilane U1 CONC PCN 77/R/C/W/T  Taxilane V CONC PCN 56/R/C/W/T  Taxilane W CONC PCN 56/R/C/W/T</p> <p><i>APRON 4</i>  Stands 401, 402, 467-470 CONC PCN 63/R/B/X/U  Stands 461, 462, 471-479 CONC PCN 50/R/B/X/U  Taxilane Y CONC PCN 63/R/B/X/U</p> <p><i>OTHER AREAS:</i>  Z1 - Isolated parking area CONC (available in emergencies)  Z2 - Unused (CLSD)  Z3 Remote Apron (engine test area, long term parking, military parking) CONC PCN 59/R/C/X/T.  Z4 Unused (CLSD)</p> <p><i>DN Deicing pad North</i>  DN1 CONC PCN 56/R/C/W/T  DN2-4 CONC PCN 77/R/C/W/T  <i>DS Deicing pad South</i>  DS1 CONC PCN 56/R/C/W/T  DS2-4 CONC PCN 77/R/C/W/T</p>
---	--	--

2	<b>Taxiway width, surface and strength</b> (see also <a href="#">EVRA AD 2.24.1-1</a> )	<table border="0"> <tr> <td>Width:</td> <td>Surface:</td> <td>Strength:</td> </tr> <tr> <td>TWY A: 23m</td> <td>ASPH</td> <td>PCN 89/F/C/X/T</td> </tr> <tr> <td>TWY B: 23m</td> <td>CONC+ASPH</td> <td>PCN 84/F/A/W/T</td> </tr> <tr> <td>TWY C: 23m</td> <td>CONC+ASPH</td> <td>PCN 89/F/C/W/T</td> </tr> <tr> <td>TWY D: 18m</td> <td>ASPH</td> <td>PCN 50/F/C/X/T</td> </tr> <tr> <td>TWY E: 23m</td> <td>ASPH</td> <td>PCN 89/F/C/X/T</td> </tr> <tr> <td>TWY F: 23m</td> <td>CONC+ASPH</td> <td>PCN 64/F/A/W/T</td> </tr> <tr> <td>TWY G: 23m</td> <td>CONC+ASPH</td> <td>PCN 100/F/C/X/T</td> </tr> <tr> <td>TWY H: 18m</td> <td>CONC</td> <td>closed</td> </tr> <tr> <td>TWY J: 18m</td> <td>CONC</td> <td>closed</td> </tr> <tr> <td>TWY K: 23m</td> <td>CONC+ASPH</td> <td>PCN 84/F/A/W/T</td> </tr> <tr> <td>TWY L: 18m</td> <td>CONC</td> <td>closed</td> </tr> <tr> <td>TWY M: 18m</td> <td>CONC</td> <td>PCN 50/R/B/W/U</td> </tr> <tr> <td>TWY N: 18m</td> <td>CONC</td> <td>closed</td> </tr> </table> <p>Note: TWY B, C, F, G, K - composite construction  Note: TWY K, M and Remote Apron Z3 - daylight operations only except during LVP.  Note: TWY F has several different types of pavement over the full length, and only the lowest PCN value is published here.</p>	Width:	Surface:	Strength:	TWY A: 23m	ASPH	PCN 89/F/C/X/T	TWY B: 23m	CONC+ASPH	PCN 84/F/A/W/T	TWY C: 23m	CONC+ASPH	PCN 89/F/C/W/T	TWY D: 18m	ASPH	PCN 50/F/C/X/T	TWY E: 23m	ASPH	PCN 89/F/C/X/T	TWY F: 23m	CONC+ASPH	PCN 64/F/A/W/T	TWY G: 23m	CONC+ASPH	PCN 100/F/C/X/T	TWY H: 18m	CONC	closed	TWY J: 18m	CONC	closed	TWY K: 23m	CONC+ASPH	PCN 84/F/A/W/T	TWY L: 18m	CONC	closed	TWY M: 18m	CONC	PCN 50/R/B/W/U	TWY N: 18m	CONC	closed
Width:	Surface:	Strength:																																										
TWY A: 23m	ASPH	PCN 89/F/C/X/T																																										
TWY B: 23m	CONC+ASPH	PCN 84/F/A/W/T																																										
TWY C: 23m	CONC+ASPH	PCN 89/F/C/W/T																																										
TWY D: 18m	ASPH	PCN 50/F/C/X/T																																										
TWY E: 23m	ASPH	PCN 89/F/C/X/T																																										
TWY F: 23m	CONC+ASPH	PCN 64/F/A/W/T																																										
TWY G: 23m	CONC+ASPH	PCN 100/F/C/X/T																																										
TWY H: 18m	CONC	closed																																										
TWY J: 18m	CONC	closed																																										
TWY K: 23m	CONC+ASPH	PCN 84/F/A/W/T																																										
TWY L: 18m	CONC	closed																																										
TWY M: 18m	CONC	PCN 50/R/B/W/U																																										
TWY N: 18m	CONC	closed																																										
3	<b>Altimeter checkpoint location and elevation</b>	Apron 1 ACL: at Apron 33 FT Apron 2 ACL: at Apron 33 FT Apron 3 ACL: at Apron 33 FT Apron 4 ACL: at Apron 33 FT																																										
4	<b>VOR checkpoints</b>	NIL																																										
5	<b>INS checkpoints</b>	NIL																																										
6	<b>Remarks</b>	TWY M portion between TWY L and TWY K and between TWY J and TWY H closed. The rapid-exit TWY D and TWY M are designed for code C (max.wingspan 36m) or smaller ACFT.																																										

**EVRA AD 2.9 SURFACE MOVEMENT GUIDANCE AND CONTROL SYSTEM AND MARKINGS**

1	<b>Use of aircraft stand ID signs, TWY guide lines and visual docking/parking guidance system at aircraft stands</b>	Sign boards at intersections with TWY and RWY and at all holding PSN. Guide lines at APRON. VDGS on stands 102, 104, 105, 106, 107, 321-326 (see <a href="#">EVRA AD 2.20</a> )
2	<b>RWY and TWY markings and LGT (see also <a href="#">EVRA AD 2.24.1-1</a>)</b>	RWY 18/36: Designation, THR, TDZ, aiming point, CL, edge marked. RWY 18/36: THR, TDZ, CL, RWY end, edge lighted. TWY: CL, runway and intermediate holding PSN marked. TWY: CL, TWY edge, intermediate taxi holding PSN lighted (except on TWY M, L, K, J, N, H and on all aprons). TWY D is equipped with RETILs.
3	<b>Stop bars</b>	Red, LIH at all RWY holding PSN
4	<b>Remarks</b>	NIL

## EVRA AD 2.10 AERODROME OBSTACLES

Obstacle data for AD Riga are provided both electronically as data sets and as charts/tables in AIP.

Complying with ICAO Annex 15 provisions (10.1.4, 10.1.6) AD electronic obstacle data are provided for:

- a. Area 2a;
- b. objects in the take-off flight path area which project above a plane surface having a 1.2 per cent slope and having a common origin with the take-off flight path area; and
- c. penetrations of the aerodrome obstacle limitation surfaces.

*Note.— Take-off flight path areas are specified in Annex 4, 3.8.2. Aerodrome obstacle limitation surfaces are specified in Annex 14, Volume 1, Chapter 4.*

AD Riga obstacle data are presented in the following charts with associated tables:

- AERODROME OBSTACLE CHART - ICAO TYPE B (RWY18) (Inner approach, approach, take-off climb, transitional and take-off flight path area surfaces) see [EVRA AD 2.24.5-1](#);
- AERODROME OBSTACLE CHART - ICAO TYPE B (RWY36) (Inner approach, approach, take-off climb, transitional and take-off flight path area surfaces) see [EVRA AD 2.24.5-3](#);
- AERODROME OBSTACLE CHART - ICAO TYPE B (RWY18/36) (Conical, inner horizontal, outer horizontal and area 2a surfaces) see [EVRA AD 2.24.5-5](#);

The charts depict the information about the obstacles in the form of polygons, poly-lines and points identical to the information provided in the form of electronic data sets.

To correlate the information published in the charts and tables, some polygons are combined into polygon location areas, which are contoured blue.

See [GEN 3.1.6](#) for details of how electronic obstacle data may be obtained.

## EVRA AD 2.11 METEOROLOGICAL INFORMATION PROVIDED

1	<b>Associated MET Office</b>	Riga
2	<b>Hours of service</b> <b>MET Office outside hours</b>	H24 -
3	<b>Office responsible for TAF preparation</b> <b>Periods of validity</b>	Riga 24 HR
4	<b>Trend forecast</b> <b>Interval of issuance</b>	TREND 0.5 HR
5	<b>Briefing/consultation provided</b>	Consultation O/R H24, TEL +371 67142 005
6	<b>Flight documentation</b>  <b>Language(s) used</b>	TAF, METAR, SIGMET, GAMET, AIRMET, WAFS charts, SWL English
7	<b>Charts and other information available for briefing or consultation</b>	NIL
8	<b>Supplementary equipment available for providing information</b>	Satellite images, weather radar information
9	<b>ATS units provided with information</b>	Riga Tower, Riga Ground, Riga APP, Riga ACC, Riga Briefing
10	<b>Additional information (limitation of service, etc.)</b>	See <a href="#">GEN 3.5</a> for RVR reporting and location of RVR EQPT. Trend forecast is not available in local special report.

## EVRA AD 2.12 RUNWAY PHYSICAL CHARACTERISTICS

RWY designator	True BRG	Dimensions of RWY (m)	Strength (PCN) and surface of RWY and SWY	THR coordinates, RWY end coordinates, THR geoid undulation	THR elevation and highest elevation of TDZ of precision APP RWY
1	2	3	4	5	6
18	185.18°	3200x45	89/F/C/X/T CONC+ASPH Note: Composite construction	565606.25N 0235823.07E - GUND 69.2FT	THR 31.2 FT
36	005.17°	3200x45	89/F/C/X/T CONC+ASPH Note: Composite construction	565423.22N 0235806.08E - GUND 69.6FT	THR 35.8 FT

Slope of RWY-SWY	SWY dimensions (m)	CWY dimensions (m)	Strip dimensions (m)	RESA dimensions (m)	OFZ	Remarks
7	8	9	10	11	12	13
- 0.1%/NIL/0.2% (600m/1650m/ 950m)	NIL	NIL	3320x300	240x150 (undershoot) 500x90 (overrun)	Available	NIL
- 0.2%/NIL/0.1% (950m/1650m/ 600m)	NIL	NIL	3320x300	500x90 (undershoot) 240x150 (overrun)	Available	NIL

See also [EVRA AD 2.24.1-1](#).

## EVRA AD 2.13 DECLARED DISTANCES

RWY designator	TORA (m)	TODA (m)	ASDA (m)	LDA (m)	Remarks
1	2	3	4	5	6
18	3200	3200	3200	3200	NIL
18	2600	2600	2600	-	Take-off from intersection with TWY E
36	3200	3200	3200	3200	NIL
36	2500	2500	2500	-	Take-off from intersection with TWY B

27 APR 2017

RWY designator	TORA (m)	TODA (m)	ASDA (m)	LDA (m)	Remarks
1	2	3	4	5	6
36	1980	1980	1980	-	Take-off from intersection with TWY C

See also [EVRA AD 2.24.4-1](#).

## EVRA AD 2.14 APPROACH AND RUNWAY LIGHTING

RWY	APCH LGT Type, LEN, INTST	THR LGT Colour WBAR	VASIS (MEHT) PAPI	TDZ LGT LEN	RWY centre line LGT LEN, Spacing, Colour, INTST	RWY edge LGT LEN, Spacing, Colour, INTST	RWY end LGT Colour WBAR	SWY LGT LEN, Colour	Remarks
1	2	3	4	5	6	7	8	9	10
18	CAT II, 900m, LIH	Green Green	PAPI left GP 3.00° (62.7 FT)	900 m	3200m, 15m, 0-2300m white, 2300-2900m red/white, 2900-3200m red, LIH	3200m, 60m, white, last 600m yellow, LIH	Red -	NIL	NIL
36	CAT II, 900m, LIH	Green Green	PAPI left GP 3.00° (68.2 FT)	900 m	3200m, 15m, 0-2300m white, 2300-2900m red/white, 2900-3200m red, LIH	3200m, 60m, white, last 600m yellow, LIH	Red -	NIL	NIL

See also [EVRA AD 2.24.1-1](#).

## EVRA AD 2.15 OTHER LIGHTING, SECONDARY POWER SUPPLY

1	ABN/IBN location, characteristics and hours of operation	NIL
2	LDI location and LGT Anemometer location and LGT	NIL Anemometer: 370 m from THR18, 380 m from THR36, lighted (Ref. Table <a href="#">GEN 3.5.3</a> )
3	TWY edge and TWY centre line lighting	Edge: All TWY (except on TWY M, L, K, J, N, H and on all aprons); Centre line: Green, LIH (except on TWY M, L, K, J, N, H and on all aprons).
4	Secondary power supply/switch-over time	Available / 1 SEC
5	Remarks	RWY 18/36 guard lights at TWYs A, B, C, D, E, G, H, J, K, L, N.



## EVRA AD 2.16 HELICOPTER LANDING AREA

Nil

## EVRA AD 2.17 ATS AIRSPACE

1	Designation and lateral limits	RIGA CTR 570804N 0235109E - 570819N 0240025E - 570709N 0240926E - 570018N 0241046E - 565002N 0241040E - 564248N 0240519E - 564232N 0235609E - 564340N 0234714E - 565425N 0234613E - 565703N 0234608E - 570804N 0235109E
2	Vertical limits	2500 FT ALT/GND
3	Airspace classification	C (except SPILVE ATZ Sectors A1, A2, B - see <a href="#">EVRS AD 2.17</a> ATS Airspace)
4	ATS unit call sign Language(s)	Riga Tower English
5	Transition altitude	5000 FT ALT
6	Hours of applicability	H24
7	Remarks	NIL

## EVRA AD 2.18 ATS COMMUNICATION FACILITIES

Service designation	Call sign	Channel(s)	Hours of Operation	Remarks
1	2	3	4	5
APP	Riga Approach	129.925 MHz 134.850 MHz	H24 H24	
TWR	Riga Tower	118.100 MHz	H24	Frequency might be coupled on to GMC frequency from 2200 till 0600 (local time)
GMC	Riga Ground	118.800 MHz	H24	Frequency might be coupled on to TWR frequency from 2200 till 0600 (local time)
ATIS (INFO)	Riga Information	120.175 MHz	H24	ATIS service also available via data link. This service operates through ACARS network and supports aircraft equipped with ACARS which is ARINC 623 compliant. (Provider is SITA).

27 APR 2017

## EVRA AD 2.19 RADIO NAVIGATION AND LANDING AIDS

Type of aid, MAG VAR, Type of supported OPS (for VOR/ILS/MLS, give declination)	ID	Frequency, Channel number, Service provider	Hours of operation	Position of transmitting antenna coordinates	Elevation of DME transmitting antenna	Remarks
1	2	3	4	5	6	7
DVOR/DME 7.0° E/ 2012	RIA	112.050 MHz CH-57Y SJSC "Latvijas gaisa satiksme"	H24	565515.1N 0235754.7E	100FT	
LOC 18 ILS CAT II	IRV	111.100 MHz	H24	565404.3N 0235803.0E		Class II/D/3 (refer to LVP GEN 3.4.3 paragraph 1, AD 1.1.3 and <a href="#">EVRA AD 2.22</a> paragraph 4)
GP 18		331.700 MHz	H24	565556.3N 0235814.3E		GP 3.0° RDH 52 FT
DME18	IRV	CH - 48X SJSC "Latvijas gaisa satiksme"	H24	565556.3N 0235814.3E	100FT	IRV DME reading refers to THR 18
LOC 36 ILS CAT II	IRP	108.100 MHz	H24	565624.9N 0235826.2E		Class II/D/3 (refer to LVP GEN 3.4.3 paragraph 1, AD 1.1.3 and <a href="#">EVRA AD 2.22</a> paragraph 4)
GP 36		334.700 MHz	H24	565433.2N 0235800.6E		GP 3.0° RDH 52FT
DME36	IRP	CH - 18X SJSC "Latvijas gaisa satiksme"	H24	565433.2N 0235800.6E	100FT	IRP DME reading refers to THR 36
VOR/DME 7.0° E/2010	TUK	112.300 MHz CH-70X SJSC "Latvijas gaisa satiksme"	H24	565550.1N 0231423.9E	200FT	

---

## EVRA AD 2.20 LOCAL AERODROME REGULATIONS

### 1. RUN - UP PROCEDURES

- 1.1 Permission for engine run-up shall be requested from "Riga Apron" on FREQ 131.600 MHz. Stand number and intended engine power thrust should be indicated.
- 1.2 On contact stands engine run-up is not permitted.
- 1.3 On other apron stands engine run-up is permitted at idle power only.
- 1.4 Engine run-up at power exceeding idle is permitted only in Engine test area Z3 (see also [EVRA AD 2.24.1-1](#)).

### 2. PUSH BACK, POWER BACK AND TOWING PROCEDURES

- 2.1 Request clearance on FREQ 118.800 MHz "Riga Ground" (frequency might be coupled on to FREQ 118.100 MHz "Riga Tower" from 2200 till 0600 (local time)) for push back, power back or towing.
- 2.2 Clearance for push back, power back or towing may only be requested when an aircraft is ready to carry out the manoeuvre immediately.
- 2.3 A Handling agent (Headset Operator) is fully responsible for the push back procedure. The crew must use the interphone for communication with the Handling agent to start or stop push back at any reason. Hand signals may be used as an alternative only when it is not possible to use the interphone.
- 2.4 Engines can be started before, during or after push back. The aircraft shall not start taxiing and main engines must be operated only at idle power until the push back tractor has been disconnected and driven away to safe distance and the Handling agent has given "all clear" signal with thumbs up.

### 3. START - UP PROCEDURES

- 3.1 All flights shall request clearance on FREQ 118.800 MHz "Riga Ground" (frequency might be coupled on to FREQ 118.100 MHz "Riga Tower" from 2200 till 0600 (local time)) for engine start-up.
- 3.2 The parking position and designator for ATIS broadcast latest received shall be stated in the initial call.
- 3.3 Start-up and ATC clearance shall be requested not earlier than 10 min before estimated start-up.
- 3.4 Start-up approval alone does not imply approval to push-back and taxi.
- 3.5 After start-up approval from ATC the actual engine start-up shall be coordinated with the ground staff.
- 3.6 After engine start-up taxiing shall be commenced only after receiving an "all clear" (thumbs-up) signal from the ground staff.

#### 3.7 Clearance delivery

- 3.7.1 ATC departure clearances may be obtained by Voice RTF or Datalink departure clearance service (ARINC 623 compliant).

12 OCT 2017

---

### 3.7.2 Datalink departure clearance service:

- Datalink departure clearance service is available from EOBT - 15 until EOBT + 15 minutes;
- Datalink departure clearances should not be issued if requested later than EOBT + 15 minute. Successful clearances must be ACCEPTED within 5 minutes of receipt or a "Revert to voice" message will be received;
- If any data errors are detected by the system or the controller, a "Revert to voice" message will be received;
- If the attempt to obtain a clearance is unsuccessful the aircraft should revert to voice RTF.

## 4. TAXI PROCEDURES

4.1 Within the ATC Service Boundary presented on the aerodrome chart ([EVRA AD 2.24.1-1](#)) the ATC issues taxi clearances. For taxiing on the apron ATC issues only taxi instructions.

4.2 When taxiing on the apron, the aircraft shall follow the yellow taxiing guide lines. No deviations or short cuts are permitted except under the guidance of a follow-me-car or after special instructions given by the appropriate ATC unit.

4.3 When taxiing on the apron, crews should carefully observe the ground vehicle traffic to avoid any incidents.

4.4 "Follow-me" service car is always available on request.

4.5 ICAO Code E four-engine aircraft shall taxi using all four engines at idle power to avoid jet blast caused damage.

## 5. SELECTION OF RUNWAY-IN-USE, HIGH INTENSITY RUNWAY OPERATIONS AND REDUCED RUNWAY SEPARATION MINIMA

### 5.1 Selection of runway-in-use

5.1.1 Normally "RIGA TOWER" controller will assign the operational RWY most nearly aligned into the wind.

5.1.2 Following relevant factors mentioned below will also be taken into consideration for runway-in-use selection:

- approach and landing facilities serviceability;
- meteorological conditions (RVR);
- reported or forecast wind shear, or when thunderstorms are expected to affect the approach or departure;
- air traffic flow/direction ;
- preferential runway system.

5.1.3 Runway-in-use direction with the tail wind component, including gusts, not exceeding 5 knots can be assigned, when:

- air traffic flow expected to runway direction
- the crosswind component, including gusts, does not exceed 15 knots and/or
- the runway condition is not worse than "WET" and braking action is not worse than "GOOD" and
- braking action is not adversely affected by runway contaminants such as ice, slush, snow, frost and water.

### 5.1.4 Preferential runway system

The term "Preferential RWY System" shall be used to indicate the runway that, at a particular time, is considered by the ATC unit to be the most suitable for use by the aircraft expected to land at or take-off from the aerodrome, by taking into consideration aircraft performance, surface wind speed and its components. Preferential runway

system operations contribute to the optimum use of Riga aerodrome capacity. The following RWY configuration will be used in preference to the other configuration:

	00:00 to 17:59	18:00 to 23:59
TAKE OFF	18/36	18/36
LANDING	18/36	36

5.1.5 If the pilot considers that a runway offered is not suitable, he may refuse that runway and request permission to use another. In such circumstances, RIGA TOWER controller shall inform pilots of the expected delay necessary to facilitate a change of the runway.

## 5.2 High intensity runway operation (HIRO)

### 5.2.1 High intensity runway operation. Take-offs

#### 5.2.1.1 Frequency change

While being transferred from RIGA GROUND (FREQ 118.800 MHz) to RIGA TOWER (FREQ 118.100 MHz), the pilot shall restrict initial call to CALL SIGN only, in order to avoid frequency congestion.

5.2.1.2 If possible, cockpit checks should largely be completed prior to line-up and any checks requiring completion on the RWY should be kept to a minimum.

5.2.1.3 Aircraft ready for departure should be in a position to taxi directly from hold upon receiving take-off clearance from RIGA TOWER controller.

5.2.1.4 When instructed to enter the runway, pilots are required to commence the manoeuvre without delay.

5.2.1.5 Receiving RIGA TOWER controller instruction "cleared for immediate take-off" the pilot shall act as follows:

- a. if waiting clear of the runway, taxi immediately onto it and begin take-off run without stopping the aircraft;
- b. if already lined-up on the runway, take-off without delay;
- c. if unable to comply with the instructions, inform RIGA TOWER controller immediately and follow new instructions.

#### 5.2.1.6 Conditional clearance

1. When the conditional clearance involves a departing aircraft and an arriving aircraft, it is important that the departing aircraft correctly identifies the arriving aircraft on which the conditional clearance is based. Reference to the arriving aircraft type may be insufficient and it may be necessary to add a description of the color or the company name to ensure correct identification.

2. A conditional clearance shall be given as follows:

- a. identification;
- b. condition;
- c. clearance; and
- d. a brief reiteration of the condition.

3. Examples of conditional clearances are:

Controller: *"BTI 221, BEHIND LANDING BOEING 737 ON SHORT FINAL, LINE UP AND WAIT BEHIND"*.

4. Conditional clearances are to be read back in full:

Pilot: *"BEHIND LANDING BOEING 737, LINING UP AND WAITING BEHIND, BTI 221"*.

## 5.2.2 High intensity runway operation. Landings

5.2.2.1 In order to avoid go-arounds, aircraft should vacate the runway quickly and entirely (**tail beyond holding position line**), without prejudice to safety. Pilots should take into consideration that it might be more efficient to use an exit situated farther away, than to try to vacate too quickly, miss the exit and then having to taxi slowly to the next. The aim should be to achieve a normal touchdown with progressive smooth deceleration to vacate, at a safe speed, at the nominated exit point.

The RWY vacating, as a rule, should be expected via the existing turn-offs:

ACFT Wake turbulence category	RWY 18	RWY 36
HEAVY Distance to turn-off	B 2430 m	E 2540 m
MEDIUM (Jet), MEDIUM (Prop) Distance to turn-off	C 1930 m	D* 1765 m
LIGHT Distance to turn-off	D* 1150 m	C 1150 m
Distance to turn-off = Distance from threshold of the respective RWY to beginning of turn-off curve.		
*The rapid-exit TWY D is designed for code C (max.wingspan 36m or max.main gear wheel span 9m) or smaller ACFT.		

NOTE 1: If unable to vacate the RWY as prescribed, the pilot shall inform RIGA TOWER immediately.

NOTE 2: If different, from mentioned above, taxiways or backtrack procedure suspected to be used for RWY vacating, RIGA TOWER will inform the pilot in advance.

5.2.2.2 A succeeding landing aircraft may cross the runway-in-use threshold when a preceding landed aircraft has vacated the runway-in-use (tail beyond holding position line).

5.2.2.3 A succeeding aircraft approaching the runway-in-use threshold should be instructed to GO AROUND, if the runway is not vacated by a preceding landed aircraft.

5.2.2.4 Frequency change after landing

The pilot shall contact RIGA GROUND (FREQ 118.800 MHz) immediately after vacating the runway for taxi clearance if no other instruction from RIGA TOWER controller received.

## 5.3 Reduced runway separation minima

5.3.1 For the purpose of reduced runway separation, aircraft shall be classified as follows:

- a. **Category 1 aircraft:** single-engine propeller aircraft with a maximum certificated take-off mass of 2 000 kg or less;
- b. **Category 2 aircraft:** single-engine propeller aircraft with a maximum certificated take-off mass of more than 2 000 kg but less than 7 000 kg; and twin-engine propeller aircraft with a maximum certificated take-off mass of less than 7 000 kg;
- c. **Category 3 aircraft:** all other aircraft.

5.3.2 Reduced runway separation minima shall be applied :

- between succeeding and preceding landing aircraft;
- during the hours of daylight from 30 minutes after local sunrise to 30 minutes before local sunset.

5.3.3 Reduced runway separation minima shall NOT apply between a departing aircraft and a preceding landing aircraft.

5.3.4 Reduced runway separation minima shall be subject to the following conditions:

- a. wake turbulence separation minima shall be applied;
- b. visibility shall be at least 5 km and ceiling shall not be lower than 1000 ft;
- c. tailwind component shall not exceed 5 kt;
- d. Tower controller has appropriate marks on A-SMGCS display for determination of preceding and succeeding aircraft position;
- e. traffic information shall be provided to the flight crew of the succeeding aircraft concerned;  
Example of phraseology:  
*"BTI 221, PRECEDING BOEING 737 IS VACATING THE RUNWAY, SURFACE WIND---degrees/---knots, RUNWAY 18/36 CLEARED TO LAND";*
- f. the runway condition shall not be worse than "wet" and braking action shall not be worse than "GOOD";
- g. braking action shall not be adversely affected by runway contaminants such as ice, slush, snow, frost and water.

5.3.5 The separation to be applied shall in no case be less than the following minima:

- a. landing aircraft:
  1. a succeeding landing Category 1 aircraft may cross the runway-in-use threshold when a preceding Category 1 or 2 aircraft:
    - has landed and has passed a point at least 600 m from the threshold of the runway-in-use, is in motion and will vacate the runway without backtracking;
  2. a succeeding landing Category 2 aircraft may cross the runway-in-use threshold when a preceding Category 1 or 2 aircraft:
    - has landed and has passed a point at least 1500 m from the threshold of the runway-in-use, is in motion and will vacate the runway without backtracking;
  3. a succeeding landing aircraft may cross the runway-in-use threshold when a preceding Category 3 aircraft:
    - has landed and has passed a point at least 2400 m from the threshold of the runway-in-use, is in motion and will vacate the runway without backtracking;

5.3.6 Consideration should be given to increased separation between high performance single-engine aircraft and preceding aircraft with low performance.

5.3.7 A succeeding aircraft approaching runway-in-use threshold should be instructed to GO AROUND, if the preceding landed aircraft hasn't passed an appropriate point from the threshold of the runway-in-use in accordance with Category of aircraft involved.

5.3.8 Landing Category 3 aircraft should expect runway vacating via taxiway located at the end of the runway-in-use.

## 6. MULTIPLE LINE-UPS

### 6.1 Multiple line-ups from different intersections

6.1.1 When a Tower controller issues the line-up instruction for two aircraft at different points on the runway, the following conditions should be considered:

- a. visibility is at least 5 km and ceiling is not lower than 1000 ft;
- b. minimum separation continues to exist between two departing aircraft immediately after take-off of the second aircraft;
- c. A-SMGCS is in operation mode for determination of both aircraft position.

6.1.2 When transmitting the line-up clearance a Tower controller will advise all concerned flight crews of the respective position of other traffic sequenced in multiple line-ups.

6.1.3 Pilot read back of the line-up instructions is required and shall contain the runway designator, the name of the intersection and the number in the departure sequence.

6.1.4 First of all take-off clearance will be issued for preceding departing aircraft.

### 6.2 Multiple line-ups from the same intersection

6.2.1 Multiple line-ups from the same runway access point shall consider this procedure as an applicable of a conditional ATC clearance for sequencing of departing traffic.

## 7. ADVANCED SURFACE MOVEMENT GUIDANCE AND CONTROL SYSTEM A-SMGCS

The A-SMGCS at Riga Airport is supported by SMR and Mode S multilateration, which provides aircraft position information and identification to TWR and GMC. These units will pass information and instructions on appropriate frequencies.

### 7.1 Operation of Mode S transponder on the aerodrome

7.1.1 Flight crew of aircraft equipped with Mode S having an aircraft identification feature shall set the aircraft identification in the transponder. This setting shall correspond to the aircraft identification specified in item 7 of the ICAO flight plan, or, if flight plan has been filed, the aircraft registration.

7.1.2 Mode S transponder shall be operated in accordance with the following provision:

Departing aircraft:

- a. Set aircraft identification and, when received, set assigned Mode A code,
- b. Immediately prior to request for push back or taxi, whichever is earlier, select "automatic mode" (e.g.: **AUTO**) or, if automatic mode is not available, select "**ON**" (e.g. **ON** or **XPDR**),
- c. Only when approaching the holding position of the departure runway, select "**TCAS**" (e.g.: **TA/RA**).

Arriving aircraft:

- a. As soon as practicable after landing de-select "**TCAS**" (e.g.: **TA/RA**),
- b. Select "automatic mode" (e.g.: **AUTO**) or, if automatic mode is not available, select "**ON**" (e.g. **ON** or **XPDR**),
- c. Continue to squawk last assigned Mode A code until fully parked,
- d. When fully parked, select "standby" (e.g.: **STBY**).



## **8. PARKING PROCEDURES**

8.1 On stands 103, 290, 401 and 402 aircraft are guided by specifically constructed lead-in lines with oversteer provision. On all other stands pilots should choose lead-in trajectory which is suitable for the aircraft type.

8.2 On stands 467-479 aircraft will be guided to nose-in or nose-out parking. On all other stands aircraft will normally be guided to nose-in parking.

## **9. DE-ICING PROCEDURES**

9.1 Aircraft de-icing shall be carried out in areas specifically designated by the airport. Jet airplanes with engines mounted under wing will normally be de-iced on remote de-icing pads.

9.2 De-icing on Apron may be performed either on stand or after push-back.

9.3 Initial de-icing requests shall be submitted to "Riga Apron", FREQ 131.600 MHz as early as possible but at least 15 MIN prior to off-block. The planned de-icing position will be assigned upon contact.

### **9.4 Procedures for de-icing on aprons**

9.4.1 Normally de-icing on apron will take place with aircraft engines off.

9.4.2 If de-icing is to be carried out after push-back from stand, such information should be added to push-back clearance request.

9.4.3 After de-icing is completed and de-icing team has reverted to a safe position, de-icing operator will report "de-icing completed" and anti-icing code and start time if any to the crew.

### **9.5 Procedures for de-icing on remote de-icing pads**

9.5.1 Upon reaching the perimeter of the pad "Riga Ground" will hand over the aircraft to the de-icing operator and marshaller.

9.5.2 The de-icing pad is regarded as an apron. Pilots are reminded to exercise particular caution to avoid danger to vehicles and persons involved in aircraft de-icing.

9.5.3 Aircraft should enter the assigned de-icing position with marshaller guidance. Marshaller will require to set parking brake on. Aircraft engines shall be set to idle. Outer engines of four engine aircraft shall be shut down.

9.5.4 Detailed de-icing order should normally be communicated directly to the de-icing operator via VHF radio (callsign shall be "ICE TRUCK [de-icing position id]" and FREQ shall be displayed on the de-icing vehicle). Aircraft registration number will be used as a callsign for the aircraft. During de-icing treatment monitoring "Riga Ground" frequency is recommended.

9.5.5 After de-icing is completed and de-icing team has reverted to a safe position, de-icing operator will report "de-icing completed", including anti-icing code and start time if any, and will hand over the aircraft to "Riga Ground" 118.800 MHz.

9.5.6 After clearance from "Riga Ground" 118.800 MHz taxiing shall be commenced only after receiving an "all clear" (thumbs-up) signal from the ground staff."

## **10. PROCEDURES FOR TAKE-OFF/LANDING OF HELICOPTERS**

10.1 Take-off/landing of helicopters take place on the RWY.

10.2 Helicopters with skid undercarriage are to use all normal taxiways as air taxiways.

## 11. PILOT INSTRUCTIONS FOR VISUAL DOCKING GUIDANCE SYSTEM

Riga Airport has two different Visual Docking Guidance Systems (VDGS) in operation: Honeywell on stands 102, 104-107 and Safegate on stands 321-326.

### Honeywell system instructions:

1. *Gate Ready for Docking*

Aircraft type and gate number are alternated in a flashing sequence across the top of display board.

2. *Aircraft detected*

Aircraft type is displayed steady across the top of the display.

Distance-to-go displayed.

Centre line guidance provided by arrows.

3. *STOP*

Stop now, front gear reached parking position.

4. *OK*

Successful docking.

5. *TOO FAR*

Aircraft has gone beyond stop point.

6. *ESTOP (Emergency Stop)*

Stop aircraft immediately, wait for docking instructions from marshal to resume docking procedure.

### Safegate system instructions:

1. *Gate Ready for Docking*

Aircraft type and floating arrows are displayed.

2. *Aircraft detected*

Aircraft type is displayed on top. Centre line is displayed with shrinking distance-to-go bar.

Centre line guidance provided by arrows.

Last 10 metres numerical distance-to-go provided.

3. *SLOW*

Slow down, docking speed exceeded.

4. *STOP*

Stop now, front gear reached parking position.

5. *OK*

Successful docking.

6. *TOO FAR*

Aircraft has gone beyond stop point.

7. *Other: STOP, ID FAIL, WAIT, GATE BLOCK, VIEW BLOCK, ERROR*

Stop aircraft immediately, wait for docking instructions from marshal to resume docking procedure.

If the following events occur, the pilot must stop the docking procedure, report the problem to Riga Apron (131.600 MHz) and wait for further instructions from Riga Apron (131.600 MHz) and/or marshal:

- Displayed aircraft type is not the incoming aircraft
- System does not detected the aircraft
- Display board become unreadable (loss of display)
- ESTOP message is displayed
- Pilot believes system is transmitting erroneous docking data
- Display board illuminates error messages

## 12. REMOVAL OF DISABLED AIRCRAFT FROM RUNWAYS

When an aircraft is wrecked on the runway, it is the duty of the owner or user of such aircraft to have it removed as soon as possible. If a wrecked aircraft is not removed from the runway as quickly as possible by the owner or user, the aircraft will be removed by the aerodrome authority at the owner's or user's expense.

---

### 13. TRANSPONDER GROUND TESTING PROCEDURE

Transponder testing shall be conducted in accordance with the following provisions:

- a. Prior to starting a test, ensure all transponders are selected to 'OFF' or 'Standby'.
- b. Before starting any test, contact RIGA TOWER Supervisor by telephone: +371 67 300980 or +371 67 783775 and advise about the intention to conduct transponder testing. Preliminary information could also be sent by FAX: +371 67 300989. If a pilot or maintenance personnel is unable to contact ATC via the landline, then a pilot or maintenance personnel should call GROUND controller on 118.800 MHz. Advise the local Air Traffic Control Unit about the start time, test duration, the altitude(s) at which testing will be performed and intended Aircraft Identification (Flight Id) and intended Mode A code (See below c. and d.)  
Note: Certain altitudes may not be possible due to overflying aircraft.  
Advise contact phone number.
- c. Set the Mode A code to 7776 (or other Mode A code agreed with Air Traffic Control Unit).
- d. For Mode S equipped aircraft, set the Aircraft Identification (Flight Id) with the first 8 characters of the company name. This is the name of the company conducting the tests.
- e. For Mode S equipped aircraft, set the on-the-ground status for all Mode S replies, except when an airborne reply is required (e.g. for altitude testing).
- f. Where possible, perform the testing inside a hangar to take advantage of any shielding properties it may provide.
- g. As a precaution, use antenna transmission covers whether or not testing is performed inside or outside hangar, when that is prescribed by the test procedure.
- h. When testing the altitude (Mode C or S) parameter, radiate directly into the ramp test set via the prescribed attenuator.
- i. In between testing, i.e. to transition from one altitude to another, select the transponder to 'standby' mode, if testing is conducted outside the hangar.
- j. If testing transponder parameters other than 'altitude', set altitude to -1000 feet (minus 1000 feet), or over 60000 feet (or other altitude agreed with Air Traffic Control Unit as per item l.). This will minimise the possibility of ACAS warning to airfield and overflying aircraft.
- k. If practicable for particular aircraft type, select the transponder(s) to 'OFF' or 'Standby' when testing is complete.
- l. Transponder test shall be completed according to time schedule and test altitude(s) agreed with TOWER Supervisor (GROUND controller).

**EVRA AD 2.21 NOISE ABATEMENT PROCEDURES****1. DEPARTURE PROCEDURES**

The following noise abatement departure procedure (NADP) shall be applied by all aircraft certified in accordance with ICAO Annex 16, Volume1, Chapter 3:

**Take-off and climb to 1500 ft AGL:**

- take-off flap;
- climb at V2 + (10 to 20) kt.

**At 1500 ft AGL:**

- accelerate smoothly to en-route climb speed with flap retraction on schedule.

**2. NOISE ABATEMENT AREAS**

Noise abatement areas established over Jurmala are as follows:

2.1 JURMALA 1 - all aircraft should not fly below 1500 FT ALT within coordinates:

565829N 0234502E - 570011N 0235352E - 565920N 0235434E - 565736N 0234855E - 565654N 0234533E - 565829N 0234502E

2.2 JURMALA 2 - all turboprop and jet aircraft should not fly below 5000 FT ALT within coordinates:

565859N 0234739E - 570011N 0235352E - 565920N 0235434E - 565736N 0234855E - 565859N 0234739E.

2.3 Noise abatement procedures do not apply to aircraft:

- engaged in police operations;
- engaged in medical aid operations;
- engaged in rescue operations;
- in emergency;
- avoiding danger meteorological phenomena.

## EVRA AD 2.22 FLIGHT PROCEDURES

### 1. PROCEDURES FOR IFR FLIGHTS WITHIN RIGA TMA (INBOUND)

#### 1.1 Approach procedures

Standard arrival routes (STARs) are established for Riga TMA as published on the appropriate charts [EVRA AD 2.24.9-1](#) to [EVRA AD 2.24.9-7](#).

Non-standard arrival routes are established via terminal holding patterns and detailed in EVRA AD 2.22 paragraph 1.4.3.

Pilots shall plan descent into Riga TMA in accordance with STAR descriptions as published on charts [EVRA AD 2.24.9-1](#) to [EVRA AD 2.24.9-7](#), minding the vertical constraints depicted in STAR for safety reason.

At first contact with RIGA APPROACH, report:

- call sign;
- designator of the latest received ATIS broadcast;
- level and radar heading given by ATC.

In order to avoid frequency congestion, when changing from RIGA APPROACH frequency 129.925 MHz to RIGA APPROACH frequency 134.850 MHz, state only: RIGA APPROACH + [CALL SIGN].

#### 1.1.1 Radar vectoring

Radar vectoring for arriving traffic is executed by the ATC unit according to the requirements of Doc 4444 ATM/501 and Doc 8168.

Radar vectoring is executed for ILS and LOC approach for glide path entering altitude (FAP) 4000 ft, 2500 ft and 1500 ft and for VOR approach for glide path entering altitude (FAF) 4000 ft and 2500 ft. The following fixes/points are specified in the table below.

As an alternative for ILS approach, the interception of nominal glide path may be used at altitude 2000 ft and 3000 ft.

**Table 1: Radar vectoring fixes/points**

Instrument approach	Fix/point	Coordinates
ILS RWY18	RIA D12.8 IRV D11.9 (FAP 4000)	570756.0N 0240020.8E
	RIA D8.3 IRV D7.4 (FAP 2500)	570329.3N 0235936.4E
	RIA D5.3 IRV D4.4 (FAP 1500)	570027.9N 0235906.3E
LOC RWY18	RIA D13.3 IRV D12.4 (FAF 4000)	570826.3N 0240026.0E
	RIA D8.5 IRV D7.6 (FAF 2500)	570343.2N 0235938.8E
	RIA D5.4 IRV D4.5 (FAF 1500)	570034.4N 0235907.4E
VOR RWY18	RIA D13.3 R002.0° (FAF 4000)	570821.0N 0240143.7E
	RIA D8.5 R002.0° (FAF 2500)	570340.2N 0240021.5E
ILS RWY 36	RIA D12.8 IRP D11.9 (FAP 4000)	564233.7N 0235609.8E
	RIA D8.3 IRP D7.4 (FAP 2500)	564700.4N 0235653.4E
	RIA D5.3 IRP D4.4 (FAP 1500)	565001.8N 0235723.1E
LOC RWY 36	RIA D13.3 IRP D12.4 (FAF 4000)	564204.0N 0235605.1E
	RIA D8.5 IRP D7.6 (FAF 2500)	564647.2N 0235651.3E
	RIA D5.4 IRP D4.5 (FAF 1500)	564956.0N 0235722.2E
VOR RWY 36	RIA D13.3 R174.0° (FAF 4000)	564201.5N 0235729.5E
	RIA D8.5 R174.0° (FAF 2500)	564645.9N 0235738.5E

14 SEP 2017

Radar vectoring will normally be terminated at the time the aircraft leaves the last heading to intercept the final approach track.

Clearance for visual approach will be issued only after the pilot has reported the aerodrome or the preceding aircraft in sight, at this time radar vectoring would normally be terminated.

Minimum vectoring altitude will be used to ensure obstacle clearance not below 1500 ft as published on the chart [EVRA AD 2.24.10-1](#). The obstacles boundary is depicted on the video map and designed to emphasize simplicity and safety in radar ATC application. The calculated minimum vectoring altitude must be adjusted when the ambient temperature on the surface is much lower than that predicted by the standard atmosphere.

A minimum of 300 m (984 ft) of clearance will be provided over obstacles within 3.0 NM of the area boundary presented in table below.

**Table 2: The minimum vectoring altitudes adjusted for temperature correction**

<b>AD temp</b>	Church 565651N 0240631E ELEV 433ft	Building + Antenna 565716N 0240558E ELEV 391ft	Chimney 565746N 0240211E ELEV 423ft	Building 565600N 0240236E ELEV 404ft	Building 565635N 0240719E ELEV 381ft	Building 565656N 0240522E ELEV 427ft
<b>+ 15°C</b>	1500 ft	-	1500 ft	-	-	1500 ft
<b>0°C</b>	1500 ft	1500 ft	1500 ft	1500 ft	1500 ft	1500 ft
<b>-10°C</b>	1600 ft	1600 ft	1600 ft	1600 ft	1500 ft	1600 ft
<b>-20°C</b>	1700 ft	1600 ft	1600 ft	1600 ft	1600 ft	1700 ft
<b>-30°C</b>	1700 ft	1700 ft	1700 ft	1700 ft	1700 ft	1700 ft
<b>AD temp</b>	Chimney 565650N 0240238E ELEV 361ft	TV tower 565526N 0240813E ELEV 1224ft	Building 565606N 0240653E ELEV 368ft	TV Tower 565613N 0240420E ELEV 440ft		Pillar (bridge) 565702N 0240532E ELEV 378ft
<b>+ 15°C</b>	-	2300 ft	-	1500 ft		-
<b>0°C</b>	1500 ft	2400 ft	1500 ft	1600 ft		1500 ft
<b>-10°C</b>	1500 ft	2500 ft	1500 ft	1600 ft		1500 ft
<b>-20°C</b>	1600 ft	2600 ft	1600 ft	1700 ft		1600 ft
<b>-30°C</b>	1600 ft	2700 ft	1600 ft	1700 ft		1700 ft

#### 1.1.2 Speed limitations

Max IAS 250 kt shall be below FL100, when there are no ATC restrictions.

## 1.2 Approach procedures with radar control

1.2.1 When arriving aircraft is being sequenced under radar vector, that part of approach between RIA D25.0 NM and the final approach track will be flown under vector from the controller.

Once the aircraft is under the jurisdiction of "Riga Approach" changes of heading or flight level/altitude will be made only on the instruction from the controller except in the case of radio communication failure in the aircraft or at the ATS Unit.

#### 1.2.2 Detailed procedures

##### 1.2.2.1 Headings and flight levels

Radar vectors and the descent clearance will be issued taking into account an estimate of the track distance to touchdown (track miles). The descent clearance will include track miles distance. Further distance information will be given between the initial descent and the intercept heading onto the ILS.

#### 1.2.2.2 Descent profile

Descent Approach vertical profile will be used and assume the aircraft will maintain a descent gradient of approximately 320 ft per NM (3° descent angle).

#### 1.2.2.3 Speed control

The radar controller may, in order to facilitate radar control or reduce the need for radar vectoring, request aircraft under radar control to adjust their speed in a specified manner.

Specific speed should normally be expressed in multiples of 10 kt based on indicated air speed (IAS).

Only minor speed adjustments, of not more than  $\pm 20$  kt, should be requested of an aircraft established on intermediate and final approach.

Pilots should typically expect the following speed restrictions:

- 210 kt - during the initial approach phase;
- 180 kt - on base leg/closing heading to final approach. When established on final approach track, aircraft shall maintain IAS 160 kt until passing DME distance 4 NM from the threshold unless otherwise instructed.

These speeds are applied for ATC separation purposes and are mandatory. Aircraft unable to conform to these speeds must inform ATC and state what speeds can be used.

In the event of a new (non-speed related) ATC instruction being issued pilots shall continue to maintain the previously allocated speed. All speed restrictions are to be flown as accurately as possible.

Non-compliance with speed control instructions may lead to an aircraft having to be executed from the planned approach sequence.

Aircraft concerned should be advised as soon as speed control is no longer necessary.

Only when requested by the radar controller and accepted by the pilot-in-command, a lower speed could be specified.

#### 1.2.2.4 Missed approach

Missed approach procedures are detailed on the appropriate Instrument Approach Charts.

If the published levels (5000 ft and 6000 ft) of the Missed Approach Holding (REKBI or TETRI) are occupied, new instructions will be given to aircraft under radar control.

#### 1.2.2.5 Radar failure

When radar control is interrupted (equipment failure), with the exception when the arriving aircraft leaves the last heading to intercept the final approach track, new instructions will be issued to each aircraft under control and the procedures detailed in paragraph 1.3 will be brought into use.

#### 1.2.2.6 Radio communication failure at the ATC Unit

If radio communication fails with "Riga Approach", pilots are to contact "Riga Tower" on 118.100 MHz for new instructions.

### 1.3 Approach procedures without radar control

1.3.1 Exceptionally, when traffic is not being sequenced by radar vector or radar control is interrupted (equipment failure), aircraft is guided to SMARDE (TUK) VOR/DME at FL090 or to RIA DVOR/DME at altitude not below 5000 ft for approach procedure as detailed on the charts from [EVRA AD 2.24.11-1](#) to [EVRA AD 2.24.11-11](#).

14 SEP 2017

**1.4 Holding**

## 1.4.1 Terminal holding

Holding name Facility of Fix	Inbound track (MAG)	Turn	MNM level Time or Distance	Remarks
<b>RIGA 18</b> RIGA DVOR/DME (RIA) 565515.1N 0235754.7E	179°	Right	FL equivalent of 6000 FT ALT /FL140 1 MIN	Flight level equivalent of 6000 FT ALT will be assigned by ATC based on current QNH and transition level.
<b>RIGA 36</b> RIGA DVOR/DME (RIA) 565515.1N 0235754.7E	357°	Left	FL equivalent of 6000 FT ALT /FL140 1MIN	
<b>ELMIX</b> RIA D22.0 R293° 570619N 0232308E	113°	Left	FL equivalent of 7000FT ALT RIA D27.0 NM	Flight level equivalent of 7000 FT ALT will be assigned by ATC based on current QNH and transition level.If RIA DME is out of operation outbound timing is 1 MIN.
<b>IRMAN</b> RIA D25.0 R351° 572012N 0235639E	171°	Right	FL equivalent of 7000 FT ALT / FL140 RIA D30.0 NM	
<b>KEGUM</b> RIA D22.0 R087° 565342N 0243757E	267°	Right	FL equivalent of 7000 FT ALT / FL280  RIA D27.0 NM	
<b>NELPI</b> RIA D25.0 R185° 563050N 0234834E	005°	Right	FL equivalent of 7000 FT ALT / FL140 RIA D30.0 NM	
<b>TAGUL</b> RIA D22.0 R228° 564230N 0232519E	048°	Right	FL equivalent of 7000 FT ALT RIA D27.0 NM	
<b>EKMAL</b> RIA D25.0 R139° 563429N 0242306E	319°	Right	FL equivalent of 7000 FT ALT RIA D30.0 NM	
<b>SMARDE</b> SMARDE VOR/DME (TUK) 565550N 0231424E	084°	Right	FL090/FL280 1 MIN above FL140 1.5 MIN	



## 1.4.2 Holding patterns for use following a missed approach

Holding name Facility of Fix	Inbound track (MAG)	Turn	MNM level Distance	Remarks
<b>TETRI</b> RIA DVOR/DME 003°/ 16.0 NM 571058.4N 0240301.1E	183°	Right	5000 FT ALT /FL equivalent of 6000 FT ALT  RIA D21.0 NM	Flight level equivalent of 6000 FT ALT will be assigned by ATC based on current QNH and transition level.If RIA DME is out of operation outbound timing is 1 MIN.
<b>REKBI</b> RIA DVOR/DME 173°/ 16.0 NM 563916.7N 0235755.0E	353°	Right	5000 FT ALT /FL equivalent of 6000 FT ALT  RIA D21.0 NM	

1.4.3 Permanently established holding patterns are published on the appropriate Instrument Approach charts and STAR charts.

From the holding patterns, the radar controller will normally vector the aircraft as detailed in paragraph 1.1. When traffic conditions permit, aircraft will be permitted to carry out approach procedures as published on charts [EVRA AD 2.24.9-3](#) and [EVRA AD 2.24.9-7](#), [EVRA AD 2.24.11-1](#) to [EVRA AD 2.24.11-7](#). Exceptionally, when circumstances necessitate, the pilot may be instructed to carry out the approach procedures via RIA DVOR/DME.

### 1.5 Visual approach

Aircraft is considered to request an ATC clearance for a visual approach if reporting "Field in sight", "(lights) in sight" or "Visual".

### 1.6 Outbound traffic

- Standard departure routes (SIDs) are established for Riga aerodrome as published on charts [EVRA AD 2.24.7-1](#) to [EVRA AD 2.24.7-7](#).
- Standard initial climb is 4000 ft for aircraft following SID, unless otherwise instructed by ATC.

#### 1.6.1 Radio communication

Unless otherwise instructed aircraft shall establish two-way radio communication with RIGA APPROACH on frequency 129.925 MHz not later than passing 1500 ft after take-off.

At first contact after departure aircraft shall report:

- call sign;
- SID or radar heading given by the ATC;
- cleared altitude/flight level if differs from SID initial climb .

#### 1.6.2 ATC Clearance

ATC clearance shall be obtained from RIGA GROUND or RIGA TOWER before take-off.

14 SEP 2017

---

### 1.6.3 Speed limits

Unless otherwise instructed following speeds apply:

- aircraft below FL100 shall fly at maximum IAS 250 kt;

Aircraft unable to conform shall inform ATC.

## 1.7 Communication failure

Aircraft shall adhere to the procedure stipulated in Annex 2 (Rules of the Air) and in Doc 7030.

If communication failure occurs during STAR execution, but approach clearance is not received the pilot maintains the last received and acknowledged level (altitude) until IAF then proceeds to holding patterns RIGA 18 or RIGA 36 and carries out an instrument approach for the runway-in-use.

In the event of communication failure during radar vectoring, when approach clearance is not received the pilot maintains the last received and acknowledged level (altitude), proceeds direct to holding patterns RIGA 18 or RIGA 36 and carries out an instrument approach for the runway-in-use.

If communication failure occurs when approach clearance is received the pilot proceeds in accordance with the published approach procedures.

If communication failure occurs during a missed approach the pilot proceeds to the missed approach holding patterns REKBI or TETRI, completes at least one holding pattern at 5000 ft, then commences an approach for landing in accordance with the approach procedures via RIA DVOR/DME.

## 2. PROCEDURES FOR VFR FLIGHTS

### 2.1 Procedures for VFR flights within Riga TMA

2.1.1 The pilot-in-command shall request entry clearance to TMA at least 5 minutes in advance.

2.1.2 Actual entry clearance will be issued by ATC.

### 2.2 Procedures for VFR flights within Riga CTR

2.2.1 Inbound/outbound traffic shall be planned via following CTR entry/exit points : ARNIS, KISHI, DOLLE, as published on chart [EVRA AD 2.24.12 - 1](#).

2.2.2 CTR entry clearance shall be obtained from the TWR controller in advance.

2.2.3 From uncontrolled airspace entry altitude shall not be higher than 1500 ft.

2.2.4 Aircraft operating within the CTR shall avoid restricted areas EVR1 and EVR2.

2.2.5 After entry the aircraft is expected to land on the runway-in-use or it can be directed to one of the existing holding patterns depending on the essential traffic.

2.2.6 Spilve ATZ of class G airspace is established inside RIGA CTR ([EVRS AD 2.17](#), [EVRA AD 2.24.12 - 1](#)).

2.2.7 CTR entry points RIVER (ALT 500 ft) and SARPS (ALT 1000 ft) are established for VFR traffic leaving Spilve ATZ ([EVRA AD 2.24.12 - 1](#)).

2.2.8 VFR traffic leaving Spilve ATZ via point RIVER should proceed not higher than ALT 500 ft over the river Daugava to visual reference point (VRP) DELTA. After passing VRP DELTA turn left to join North transit route and proceed to point MAORI.

2.2.9 VFR traffic from Spilve ATZ to Riga CTR shall be planned via points RIVER or SARPS.

2.2.10 VFR traffic from Riga CTR to Spilve ATZ shall be planned via point SARPS.

### 2.3 VFR transit flights via Riga CTR using North Transit Route

2.3.1 North transit route is established within Riga CTR along the coastline of the Gulf of Riga avoiding the noise abatement area JURMALA 1 ([EVRA AD 2.24.12 - 1](#)).

2.3.2 CTR entry points MAORI and KAGAL are determined for VFR transit flights using North transit route ([EVRA AD 2.24.12 - 1](#)):

- transit flights planned from East to West should use entry point KAGAL to point MAORI;
- transit flights planned from West to East should use entry point MAORI to point KAGAL;

2.3.3 Depending on traffic a TWR controller will approve North transit route upon a pilot's request.

2.3.4 CTR entry altitude and the altitude along North transit route should be not higher than 500 ft.

2.3.5 Regardless of the flight direction simultaneously only one aircraft can follow North transit route.

2.3.6 VFR flights flying North transit route will not be in conflict with standard IFR arrivals/departures to/from Riga aerodrome.

2.3.7 Time-based separation will be provided by a TWR controller for VFR flights if there is IFR flight making visual approach RWY18 at Riga aerodrome.

## 2.4 Procedures for Special VFR flights within Riga CTR

2.4.1 A pilot shall request a TWR controller about authorization to operate as a special VFR flight within Riga CTR.

2.4.2 Pilots shall use entry points ARNIS, KISHI, KAGAL, KEKAV or DOLLE for entry Riga CTR via West or East boundaries.

2.4.3 When ceiling is below 1300 ft, then only points KAGAL or KEKAV will be assigned for entry clearance via East boundary of Riga CTR to continue approach using standard inbound Special VFR route via these points.

2.4.4 Description of Standard Inbound Special VFR routes ([EVRA AD 2.24.12 - 1](#))

- After passing KAGAL, the pilot shall fly along the coast line until sewage disposal plant "Bulli" (visual reference point (VRP) BULLI). After passing VRP BULLI proceed to aerodrome. Distance to go is around 5.5 NM. Expect straight- in-approach RWY18 or left-hand circuit RWY36.
- After passing KEKAV, the pilot shall fly along a highway A5/E77 until the intersection (viaduct) of highway A5 and road P132. The viaduct is located at a bit before settlement "Jaunmarupe" (VRP JAMAR). Before VRP JAMAR proceed to aerodrome. Distance to go is around 2.5 NM. Expect straight-in-approach RWY36 or right hand circuit RWY18.

2.4.5 If landing/departing IFR traffic does not permit to use Special VFR standard inbound routes, a TWR controller will assign a holding pattern at any position within the range of 2 NM from the entry point along the standard inbound Special VFR route inside CTR airspace boundaries, or instruct the pilot to stay outside CTR.

## 2.5 Communication failure

Aircraft shall adhere to the procedures stipulated in Annex 2 (Rules of the Air) and in Doc 7030.

Aircraft outside controlled airspace experiencing communication failure and having received no clearance should land at an aerodrome outside the control zone.

14 SEP 2017

---

### 3. PROCEDURES FOR PLANNING, AUTHORIZATION AND EXECUTION OF TRAINING FLIGHTS AT RIGA AERODROME

#### 3.1 Planning and authorization of training flights

3.1.1 Training flights shall be planned to be carried out preferably on weekdays and during working hours.

3.1.2 Training flights shall not be planned:

- on weekdays between 2200 - 0600 local time (LT), except for aircraft speed approach Category A;
- on weekends and holidays before 1100 LT and after 1800 LT;
- during busy regular air traffic hours.

3.1.3 The prior permission for execution of a training flight shall be obtained from Riga Flow Management Position (FMP):

Phone: +371 67300697

Fax: +371 67300652

Email: [fmfd@lgs.lv](mailto:fmfd@lgs.lv)

AFS: EVRRZDZX

The request for the execution of a training flight shall be submitted not earlier than 24 hours and not later than 3 hours before the estimate off-block time (EOBT) of a flight, including the following details:

- callsign and registration of the aircraft;
- aircraft type;
- aircraft speed approach Category (for night training);
- flight rules;
- the planned time of exercises at Riga aerodrome (beginning and completion);
- the nature and number of exercises.

*NOTE : Only one training flight is allowed at the time. No authorization will be given for a training flight, when a calibration or technical or photo or other special flight is carried out below 4000 ft AMSL within 25 NM from RIA DVOR/DME.*

Priority in approving the execution of the training flight for simultaneous training flight requests:

- a. aircraft based at Riga aerodrome;
- b. aircraft with highest MTOW.

Riga FMP should inform the operator/crew of the aircraft about the authorization/prohibition of the training flight not later than 1 hour after the request submission.

3.1.4 Standard ICAO Flight plan (FPL) should be submitted not later than 60 minutes before EOBT.

3.1.5 In the event of any change ("+" or "-") in EOBT for more than 15 minutes for the flight already approved to execute the training flight, the new permission shall be coordinated with Riga FMP.

3.1.6 Training flights authorized before the day of exercise may be subject of ATC restriction on the actual day, if the traffic situation, adverse weather conditions and/or technical problems (ATC system malfunction, radar failure, radio navigation aids failure, runway limitations, etc.) do not permit to give clearance for the flight execution.

3.1.7 Complaints and questions regarding the conduct of training flights shall be addressed to the Civil Aviation Agency of Latvia:

URL: <http://caa.lv/lv/jautajiet>

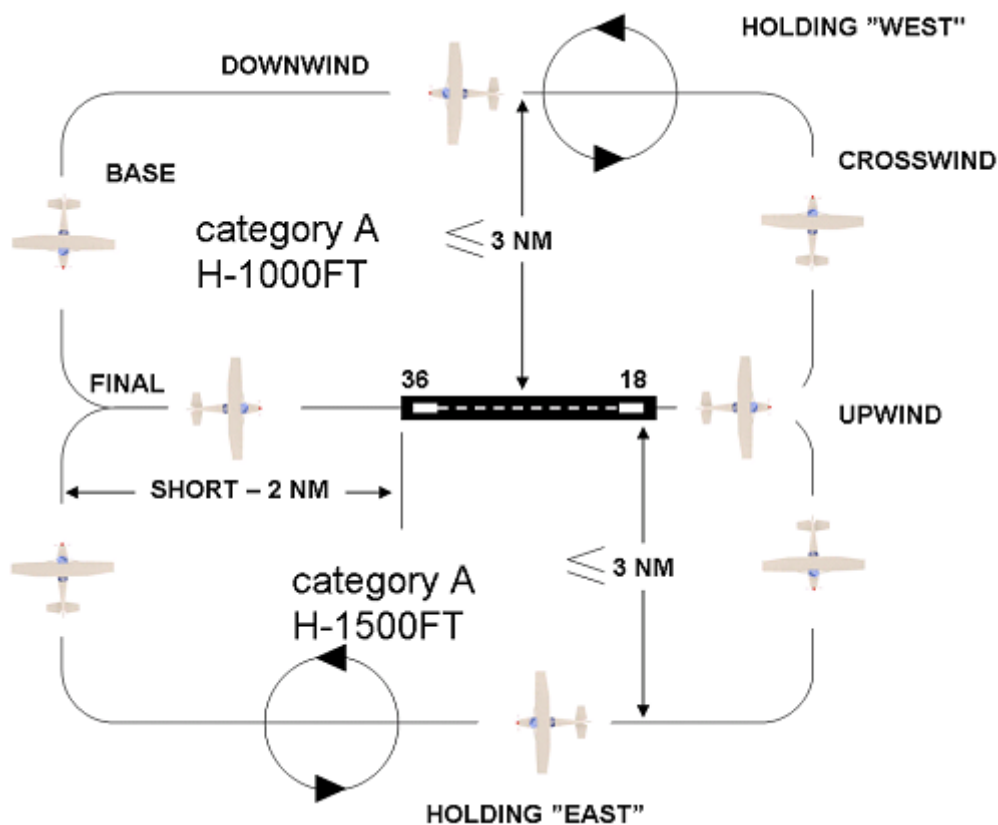
## 3.2 Flight procedures

### 3.2.1 Procedures for VFR training flights

3.2.1.1 VFR training flights can be executed only by Aircraft Speed Approach A Category or by all type of helicopters.

3.2.1.2 VFR training flights shall be performed following the traffic circuit (Figure 1).

**Figure 1.**



3.2.1.3 For RWY 36 the aircraft shall follow the left (ALT 1000 ft or below) or right (ALT 1500 ft not below) hand visual traffic circuit.

3.2.1.4 For RWY 18 the aircraft shall follow the left (ALT 1500 ft not below) or right (ALT 1000 ft or below) hand visual traffic circuit.

3.2.1.5 A left or right hand visual traffic circuit is assigned by a TOWER controller depending on the traffic situation or meteorological conditions in the vicinity of the aerodrome.

3.2.1.6 Deviation from the standard traffic circuit may be requested and is allowed only upon ATC clearance.

### 3.2.2 Procedures for IFR training flights

3.2.2.1 Training flights by IFR can be executed by Aircraft Speed Approach A, B or C Category (see EVRA AD 2.24.13-1 to EVRA AD 2.24.13-4).

3.2.2.2 Deviation from the standard IFR procedure may be requested and is allowed only upon ATC clearance. A radar vectoring will be provided.

14 SEP 2017

### 3.2.2.3 Visual manoeuvre for IFR flights

3.2.2.3.1 Before departure or at any stage of a standard IFR procedure, a pilot can request the visual manoeuvre.

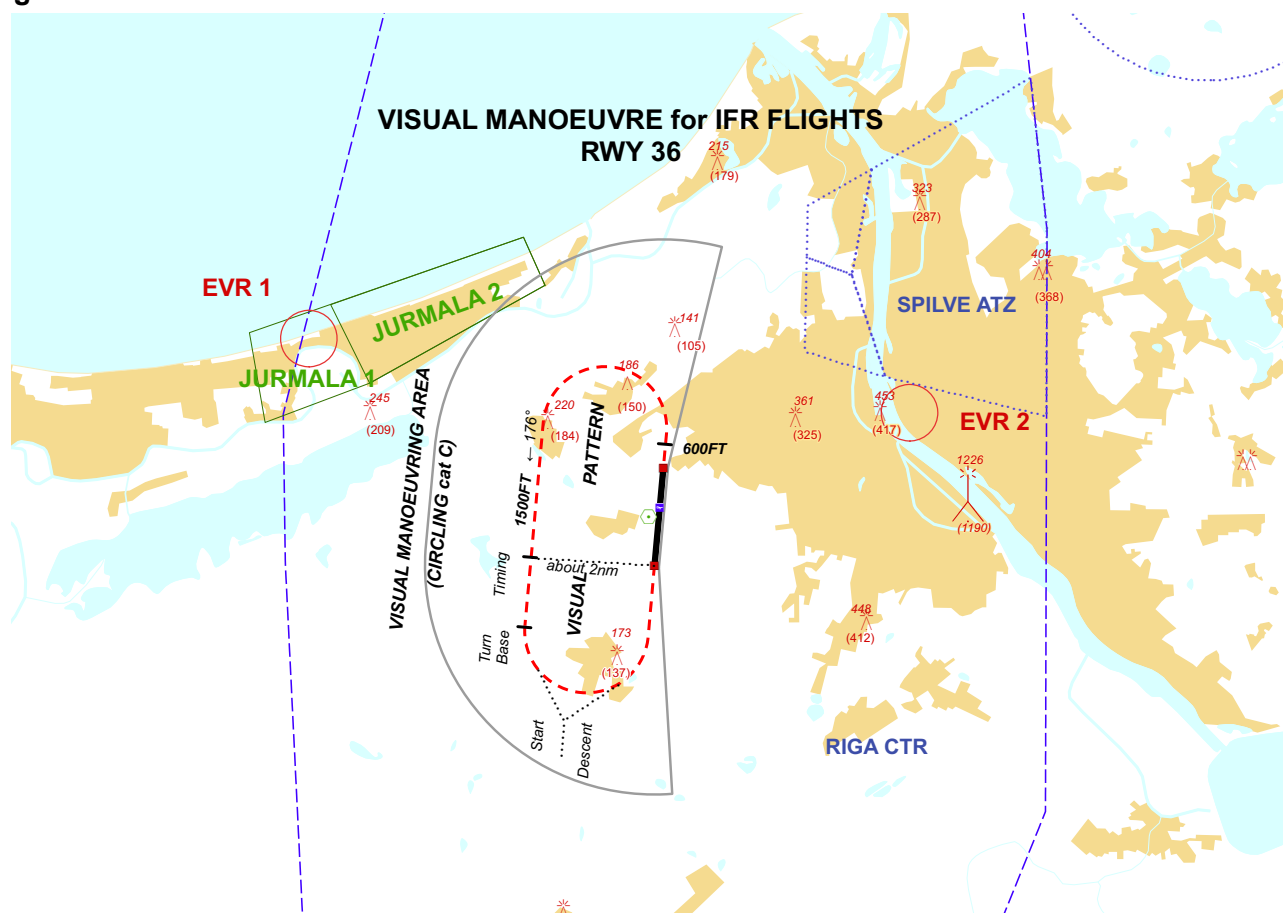
3.2.2.3.2 An IFR training flight may be cleared to execute a visual manoeuvring approach if:

- the pilot can maintain visual reference to the terrain and requests to perform next approach as visual and
- reported ceiling is 1500 ft or above, or the pilot reports that the meteorological conditions are such that with reasonable assurance a visual approach and landing can be completed.

3.2.2.3.3 Visual manoeuvring should be executed inside the limits of the circling area (Figures 2 and 3).

### Visual manoeuvre for RWY 36

Figure 2.



After take-off, touch-and-go or low approach:

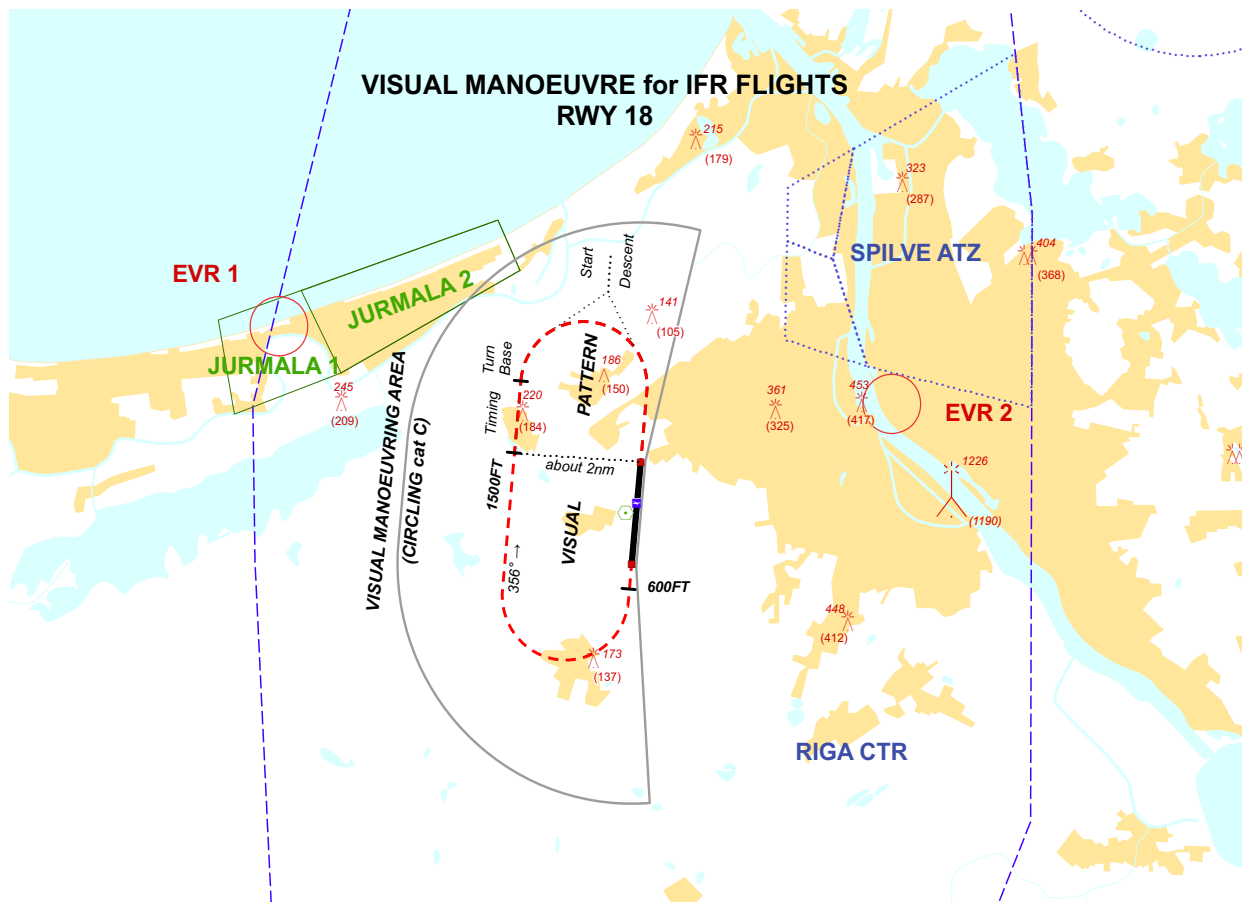
Climb straight ahead, passing 600 ft turn left climbing 1000 ft or 1500 ft.

If the visual contact with the terrain is lost during the manoeuvring, to turn towards the runway to execute the Go-around overhead the runway.

To report Riga TOWER that Missed approach procedure will be executed as published in EVRA AD 2.24.11-3.

## Visual manoeuvre for RWY 18

Figure 3.



After take-off, touch-and-go or low approach:

Climb straight ahead, passing 600 ft turn right climbing 1000 ft or 1500 ft.

If the visual contact with the terrain is lost during the manoeuvring, to turn towards the runway to execute the Go-around overhead the runway. To report Riga TOWER that Missed approach procedure will be executed as published in [EVRA AD 2.24.11-1](#)

### 3.3 ATC procedures for IFR flights

3.3.1 The pilot shall request the manoeuvre to TOWER controller in flight:

a. executing the visual manoeuvre - before turning base using the following phrases:

"Continue visual manoeuvre:

- touch-and-go;
- low approach;
- full stop;
- next flight via standard training IFR procedure;
- next flight request radar vectoring"

b. executing standard IFR procedure - after passing RIA DVOR/DME using the following phrases:

"Continue standard procedure:

- touch-and-go;
- low approach;
- full stop;

14 SEP 2017

---

- next flight as visual;
- next flight request radar vectoring.”

3.3.2 Before departure on ground the pilot can request to TOWER controller:

- the visual manoeuvre or;
- standard IFR procedure or;
- radar vectoring.

3.3.3 If ATC requires the aircraft to discontinue the approach, the phrase "BREAK OFF APPROACH" is used and supplemented with further instructions as necessary.

3.3.4 If ATC requires the aircraft to execute the missed approach procedures as published in AIP Latvia, the phrase "GO AROUND, FOLLOW MISSED APPROACH PROCEDURE" is used and supplemented with further instructions as necessary.

### **3.4 ATC procedure for VFR training flights**

3.4.1 Before turning base the pilot shall request the manoeuvre to TOWER controller using the following phrases:

“Continue visual traffic circuit:

- touch-and-go;
- low approach;
- full stop.”

## **4. LOW VISIBILITY PROCEDURES (LVP)**

### **4.1 Runways and associated equipment**

RWY 18 and RWY 36 are approved for CAT I/II approaches and for LVTO in RVR condition not less than a value of 250 m.

ILS category II, DME 18/36, FFM 18/36, DME RIA are available to RWY 18 and 36 subject to serviceability of the required facilities.

#### **4.1.1 Advanced Surface Movement Guidance and Control System (A-SMGCS)**

Surface movement radar is available to ATC.

Failure in A-SMGCS will degrade LVP so that only CAT I approaches when RVR is not less than 550 m and take-offs when RVR is not less than 450 m may operate on RWY 18/36.

#### **4.1.2 Approach spacing**

In order to maintain protection on ILS, no vehicle or aircraft shall penetrate/infringe ILS critical and sensitive areas. In order to fulfil requirement more than 8NM spacing between arrivals will be used.

### **4.2 Criteria for activation of LVP**

Standby for low visibility procedures are prompted by ATC, when RVR is 700 m or less or ceiling is 200 FT or less . Low visibility procedures are effected by ATC when RVR is 550 m or less or ceiling is 150 FT or less.

Low visibility procedures are cancelled by ATC when RVR is greater than 700 m and a continuing improvement in RVR conditions is anticipated and ceiling is greater than 200 FT.

Pilots will be informed when low visibility procedures are in operation by ATIS or radio.

Pilots will be informed over radio when LVP are cancelled.

Low visibility operations will be suspended as a result of certain equipment failure/degradation modes or procedure breaches.

ATC procedures do not allow for snow clearing on the manoeuvring area when LVP are effected but allow for limited snow clearing on the manoeuvring area when standby for LVP is prompted.



### 4.3 Description of ground marking and lighting

#### 4.3.1 RWY exit

Taxiways A, B, C, D, E and G are equipped with taxiway centerline lights and may be used for RWY exit. Back track procedures shall not be allowed after landing unless it shall be the only option for vacating the runway safely.

Centerline lights on all exits are colour coded green/yellow until RWY strip area is vacated.

Pilots are to delay the call "runway vacated" until the aircraft has completely passed the end of the green/yellow colour coded taxiway centerline lights.

#### 4.3.2 RWY entry

Category II holding points at all RWY entries are equipped with internally illuminated sign boards, runway guard lights and red stop bars. Aircraft shall stop and hold short of an illuminated stop bar until the stop bar is switched off and clearance to continue is received from ATC.

When low visibility procedures are in force, available RWY entries are limited to:

- CAT I/II holding position on TWY G (or TWY E if TWY G not AVBL) for RWY 18;
- CAT I/II holding position on TWY A (or TWY B if TWY A not AVBL) for RWY 36.

#### 4.3.3 Taxiing

Taxiing is restricted to taxiways equipped with centre line lights as indicated on the aerodrome chart. On receiving taxi clearance aircraft must only proceed when a green centre line path is illuminated. In the event of failure of the taxiway lights, aircraft are only to taxi on the direction of a "follow me" vehicle.

Taxiing operations shall be carried out according to TWR instructions/information and through the opportune use of the established Intermediate Holding Positions (IHP).

The following IHP equipped with yellow intermediate holding position lights are available for aircraft movements:

- on TWY F: IHP at intersections with TWY E, TWY D, TWY C, TWY B (all bidirectional), IHP at junction with TWY A and de-icing pad DS (direction South), IHP at junction with TWY G and de-icing pad DN (direction North) as well as IHP F1 and IHP F2;
- on TWY G: IHP G1, G2 (both North-direction);
- on TWY A: IHP A1, A2 (both South-direction);
- on TWY E, TWY D, TWY C, TWY B: IHP before intersection with TWY F (direction East).

### 4.4 Take-off

Low visibility take-off with LOC guidance is not available.

## 5. SIMULATED CAT II APPROACHES IN CAT I CONDITION

5.1 This procedure is intended for operators, which have obtained the standard category II (CAT II) approval by their respective authorities.

5.2 ILS sensitive areas are not protected for the Simulated CAT II approach at Riga Aerodrome.

5.3 The pilots, who wish to practise the Simulated ILS CAT II approach in the above mentioned condition, have to request this on initial contact with RIGA APP using the phrase: "Request simulated CAT II approach".

This request has to be made timely so the APP and TWR controllers can establish appropriate separation.

5.4 The permission will be granted depending on the traffic situation or ground equipment availability.

5.5 The pilot should inform Riga TOWER controller about alternative actions in case of discontinuation of the

14 SEP 2017

---

Simulated CAT II approach.

5.6 Riga TOWER controller will inform the pilot about ILS sensitive areas penetration, if known, and about ILS and lighting system degradation

### **EVRA AD 2.23 ADDITIONAL INFORMATION**

#### **1. BIRD CONCENTRATIONS IN THE VICINITY OF THE AIRPORT**

The airport is located in the place with the intense bird migration path.

Spring migration (March – May). Main migration path - NNE - NE. The bird concentrations are observed in the following places: the Svetes flood-land (waterfowl migration halt point) located 28 km southwest from the airport, the Cenas moorland located 10 km from the airport and the Babites lake located 8 - 18 km from the airport. As the migration starts the dangerous concentrations of birds take place early in the morning and late in the afternoon at the heights of 0 - 3000 ft (0 - 1000 m) AGL.

Autumn migration (August – October). Main migration path – SW. The main waterfowl migration halt point is located westward from the airport (the Babites and the Kaniera lakes and the Kemeru moorland). The autumn migration over the airport is less intense.

#### **2. SAFETY ON APRON**

2.1 All crew members and technical personnel must wear a high visibility clothing (a vest or uniform) when walking airside.

2.2 All airside personnel including crews are encouraged to act responsibly when noticing any Foreign Object Debris (FOD). The best practice is to pick up the noticed debris and dispose of it in the nearest disposal bin. It is also strongly recommended that a flight crew and technical crew keep track of all tools and hardware used airside to avoid FOD incidents.

2.3 For safety it is recommended to use an airside car or bus whenever necessary because there are no designated walkways on the apron.

#### **3. 180 DEGREE TURNS ON RUNWAY**

During winter when the declared cleared width on the runway will be below 45 metres, aircraft longer than 30 metres will not be allowed to perform 180 degree turns on the runway to avoid potential runway excursions.

## EVRA AD 2.24 CHARTS RELATED TO THE AERODROME

Aerodrome Chart - ICAO	EVRA AD 2.24.1 – 1
Aircraft Parking/Docking Chart - ICAO	EVRA AD 2.24.2 – 1
Stands Characteristics	EVRA AD 2.24.2 – 2
Aerodrome Ground Movement Chart - ICAO	EVRA AD 2.24.3 – 1
Aerodrome Obstacle Chart - ICAO Type A	EVRA AD 2.24.4 – 1
Aerodrome Obstacle Chart - ICAO Type B (RWY 18)	EVRA AD 2.24.5 - 1
Aerodrome Obstacle Tabulation	EVRA AD 2.24.5 – 2
Aerodrome Obstacle Chart - ICAO Type B (RWY 36)	EVRA AD 2.24.5 - 3
Aerodrome Obstacle Tabulation	EVRA AD 2.24.5 – 4
Aerodrome Obstacle Chart - ICAO Type B (RWY 18/36)	EVRA AD 2.24.5 - 5
Aerodrome Obstacle Tabulation	EVRA AD 2.24.5 – 6
Precision Approach Terrain Chart - ICAO	EVRA AD 2.24.6 – 1
Standard Departure Chart - Instrument - ICAO - SID RWY 18 (direction WEST)	EVRA AD 2.24.7 – 1
Standard Departure Chart – Instrument - ICAO - SID RWY 18 (direction EAST)	EVRA AD 2.24.7 – 3
Standard Departure Chart - Instrument - ICAO - SID RWY 36 (direction WEST)	EVRA AD 2.24.7 – 5
Standard Departure Chart – Instrument - ICAO - SID RWY 36 (direction EAST)	EVRA AD 2.24.7 – 7
Standard Arrival Chart - Instrument - ICAO - STAR RWY 18 (direction WEST)	EVRA AD 2.24.9 – 1
Standard Arrival Chart – Instrument - ICAO - STAR RWY 18 (direction EAST)	EVRA AD 2.24.9 – 3
Standard Arrival Chart - Instrument - ICAO - STAR RWY 36 (direction WEST)	EVRA AD 2.24.9 – 5
Standard Arrival Chart – Instrument - ICAO - STAR RWY 36 (direction EAST)	EVRA AD 2.24.9 – 7
ATC Surveillance Minimum Altitude Chart - ICAO	EVRA AD 2.24.10 – 1
Instrument Approach Chart – ICAO - ILS RWY 18 (CAT I&II)	EVRA AD 2.24.11 – 1
Aeronautical Data Tabulation - ILS RWY 18	EVRA AD 2.24.11 – 2
Instrument Approach Chart – ICAO - ILS RWY 36 (CAT I&II)	EVRA AD 2.24.11 – 3
Aeronautical Data Tabulation - ILS RWY 36	EVRA AD 2.24.11 – 4
Instrument Approach Chart – ICAO - LOC RWY 18	EVRA AD 2.24.11 – 5
Aeronautical Data Tabulation - LOC RWY 18	EVRA AD 2.24.11 – 6
Instrument Approach Chart – ICAO - LOC RWY 36	EVRA AD 2.24.11 – 7
Aeronautical Data Tabulation - LOC RWY 36	EVRA AD 2.24.11 – 8
Instrument Approach Chart – ICAO - VOR RWY 18	EVRA AD 2.24.11 – 9
Aeronautical Data Tabulation - VOR RWY 18	EVRA AD 2.24.11 – 10
Instrument Approach Chart – ICAO - VOR RWY 36	EVRA AD 2.24.11 – 11
Aeronautical Data Tabulation - VOR RWY 36	EVRA AD 2.24.11 – 12
Visual Approach Chart - ICAO	EVRA AD 2.24.12 – 1

14 SEP 2017

---

Instrument Approach Chart for Training Flights ILS RWY 36 (Cat B, C)	EVRA AD 2.24.13 – 1
Instrument Approach Chart for Training Flights ILS RWY 36 (Cat A)	EVRA AD 2.24.13 – 3
Instrument Approach Chart for Training Flights ILS RWY 18 (Cat B, C)	EVRA AD 2.24.13 – 5
Instrument Approach Chart for Training Flights ILS RWY 18 (Cat A)	EVRA AD 2.24.13 – 7