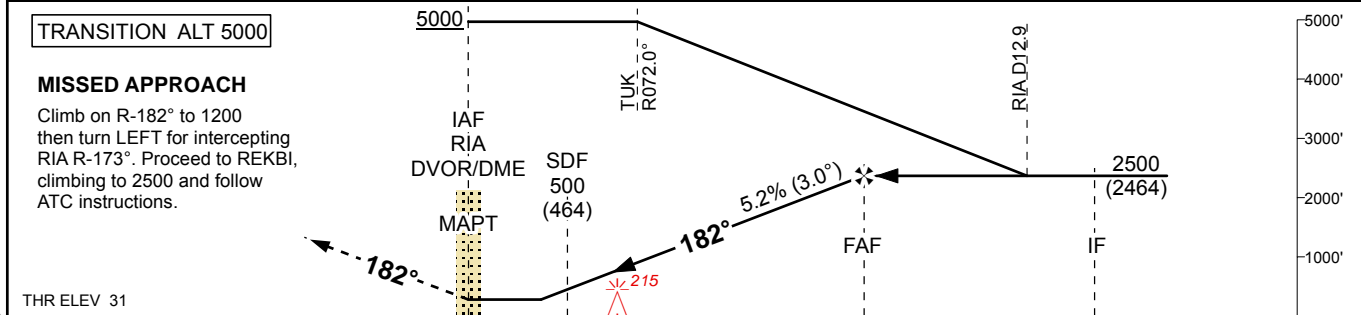
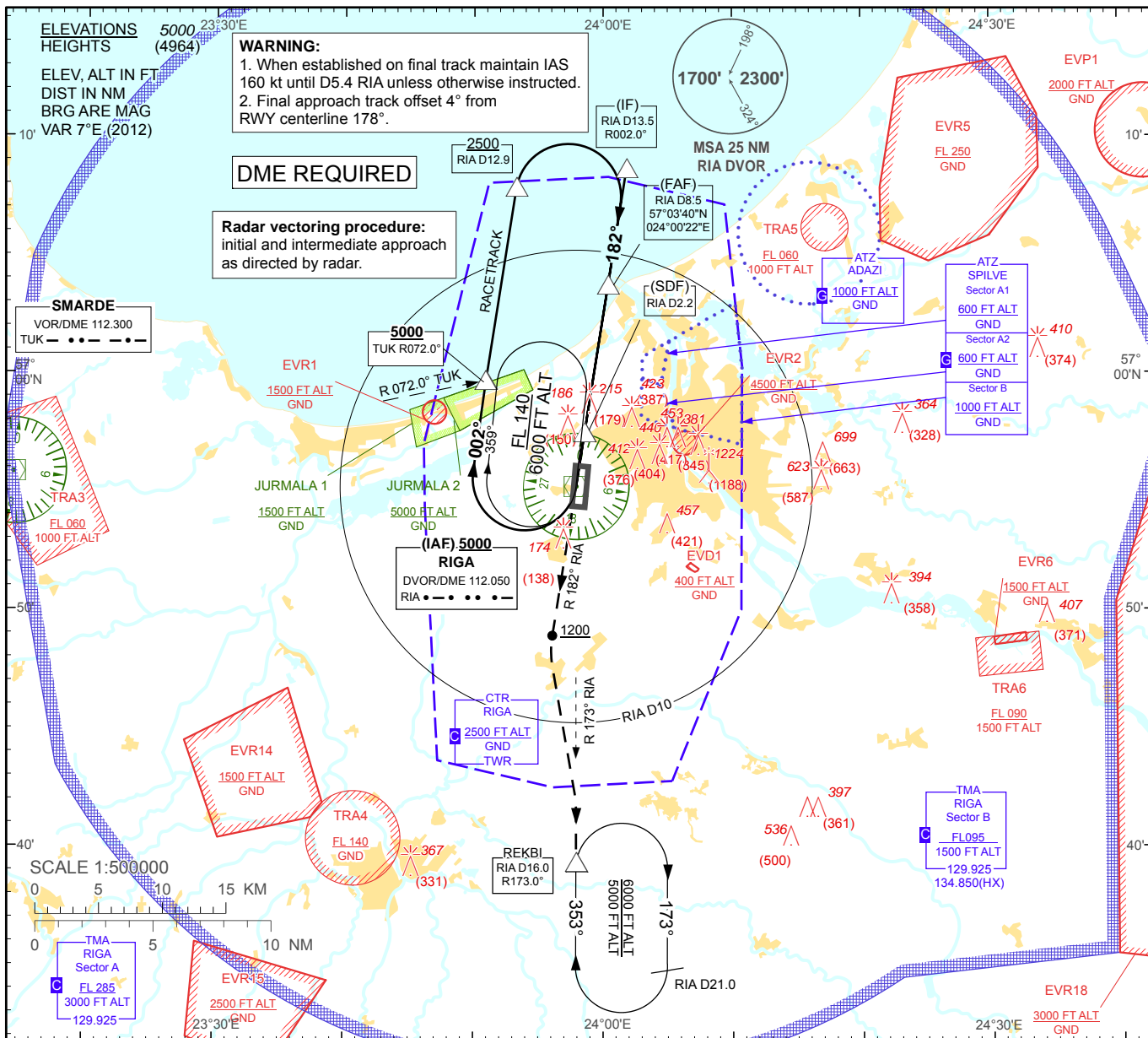


**INSTRUMENT  
APPROACH  
CHART - ICAO**

**AERODROME ELEV 36'**  
HEIGHTS RELATED TO  
AD - ELEV 36'

APP 129.925  
134.850(HX)  
TWR 118.100  
ATIS 120.175

**RIGA (EVRA)**  
**VOR RWY 18**



THR ELEV 31

Aircraft Category		A	B	C	D	DME RIA	8	7	6	5	4	3	2
Straight-in Approach OCA(H)	VOR/DME	410 (380)				DIST THR	7.1	6.1	5.1	4.1	3.1	2.1	1.1
						ALTITUDE	2330	2010	1690	1380	1060	750	430
Circling		530 (500)		730 (690)		HEIGHT	(2294)	(1974)	(1654)	(1344)	(1024)	(714)	(394)

**REMARK:**  
 - JURMALA 1, 2 - noise abatement areas (Ref. EVRA AD 2.21)  
 HX - No specific working hours  
 For data tabulation see verso

Timing not authorized for defining the MAPT

GS	Kt	80	100	120	140	160	180
Rate of desc.(5.2%)	ft/min	420	530	630	740	840	950
FAF-MAPT (8.5 NM)	min:sec	06:25	05:08	04:16	03:40	03:12	02:51

Changes: ATZ LIELVARDE (Military) withdrawn.

RIGA (EVRA)

VOR RWY 18

AERONAUTICAL DATA TABULATION

VOR approach to RWY 18 from RIA DVOR/DME (IAF)	
Fix/point	Coordinates
RIA DVOR/DME (IAF), (MAPT)	56°55'15.1"N 023°57'54.7"E
(IF) R002.00° D13.54 RIA	57°08'35.9"N 024°01'48.1"E
(FAF) R002.00° D8.54 RIA	57°03'40.2"N 024°00'21.5"E
(SDF) R002.00° D2.21 RIA	56°57'25.8"N 023°58'32.6"E
REKBI (Holding) R172.99° D16.01 RIA	56°39'16.7"N 023°57'55.0"E
THR RWY 18	56°56'06.25"N 023°58'23.07"E
Final approach descent angle is 2.98°	