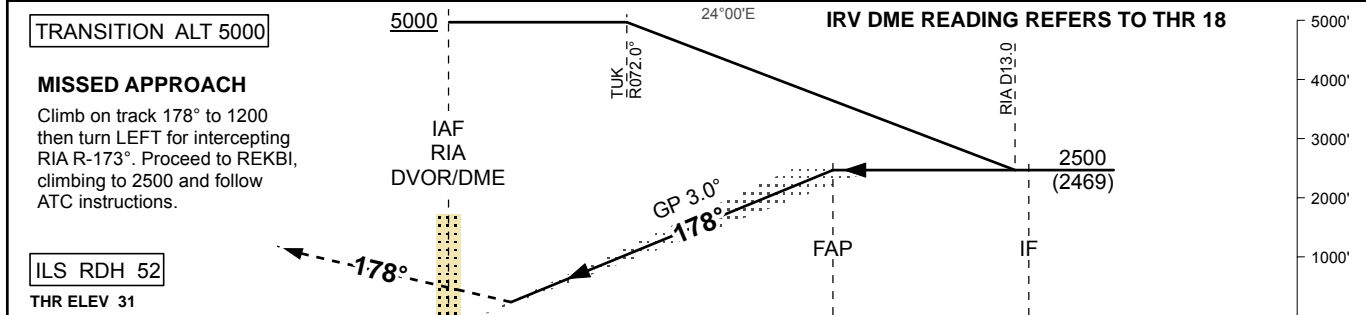
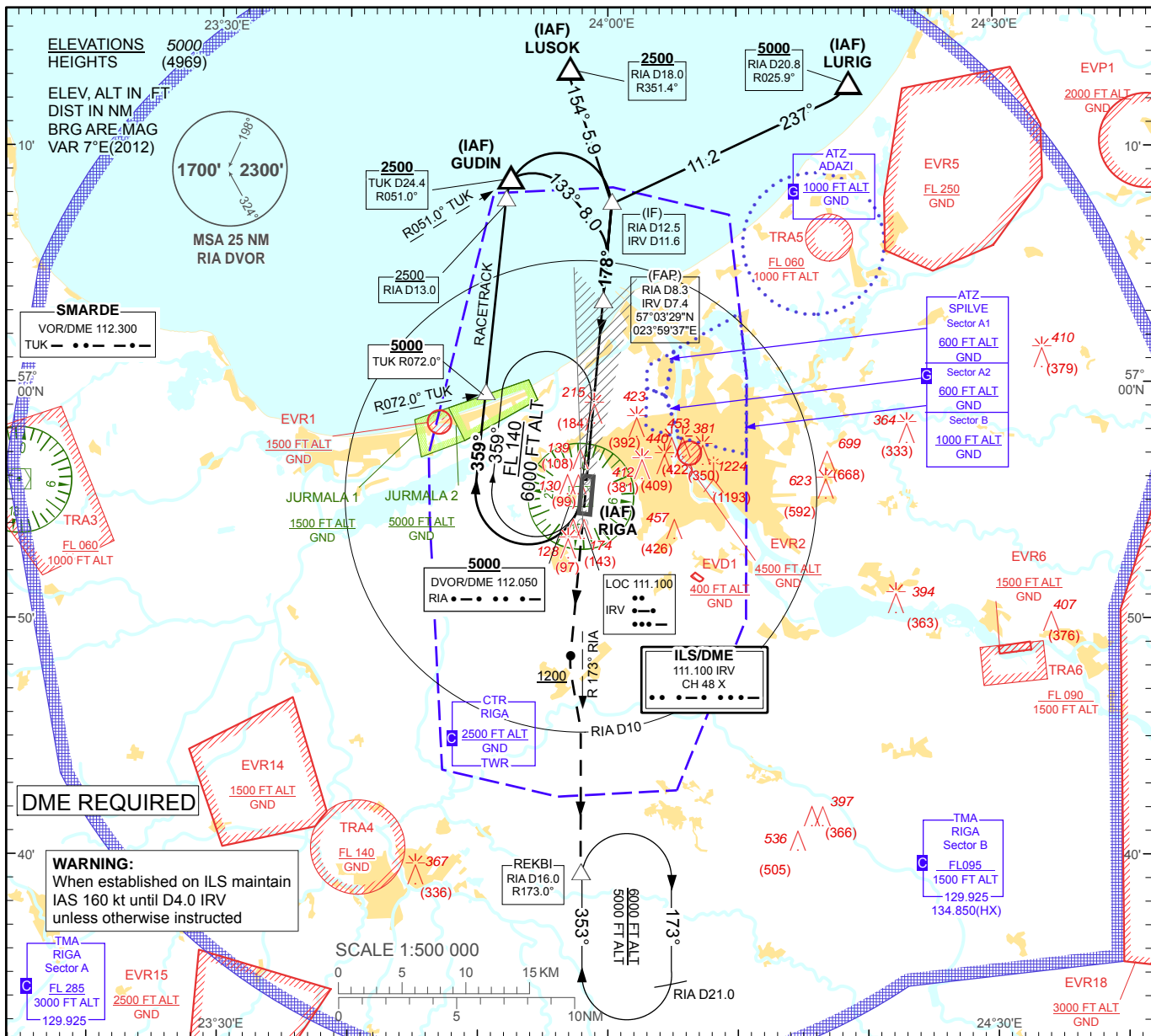


**INSTRUMENT  
APPROACH  
CHART - ICAO**

**AERODROME ELEV 36'  
HEIGHTS RELATED TO  
THR RWY 18 - ELEV 31'**

APP 129.925  
134.850(HX)  
TWR 118.100  
ATIS 120.175

**RIGA (EVRA)  
ILS RWY 18 (CAT I & II)**



Aircraft Category		A	B	C	D	DME IRV	7	6	5	4	3	2	1
Straight-in Approach OCA(H)	ILS Cat. I	231 (200)				DME RIA	7.9	6.9	5.9	4.9	3.9	2.9	1.9
	ILS Cat. II	116 (85)	133 (102)	146 (115)	160 (129)	DIST THR	7	6	5	4	3	2	1
Circling		530 (500)		730 (690)		ALTITUDE	2360	2030	1700	1380	1050	730	410
						HEIGHT	(2229)	(1999)	(1669)	(1349)	(1019)	(699)	(379)
						For data tabulation see verso							
						GS	Kt	80	100	120	140	160	180
						Rate of descent	ft/min	420	530	640	740	850	960

RIGA (EVRA)

ILS RWY 18

AERONAUTICAL DATA TABULATION

ILS approach to RWY18 from RIA DVOR/DME, GUDIN, LURIG, LUSOK	
Fix/point	Coordinates
RIA DVOR/DME (IAF)	56°55'15.1"N 023°57'54.7"E
GUDIN (IAF) R051.00° D24.41 TUK	57°08'38.9"N 023°52'24.0"E
LURIG (IAF) R025.92° D20.78 RIA	57°12'37.6"N 024°18'40.4"E
LUSOK (IAF) R351.43° D18.05 RIA	57°13'15.3"N 023°57'00.1"E
RIA D8.31 IRV D7.44 (FAP)	57°03'29.7"N 023°59'37.1"E
RIA D12.47 IRV D11.60 (IF)	57°07'37.4"N 024°00'18.6"E
REKBI (Holding) R172.99° D16.01 RIA	56°39'16.7"N 023°57'55.0"E
THR RWY 18	56°56'06.25"N 023°58'23.07"E
IRV LOC	56°54'04.3"N 023°58'03.0"E
TUK VOR/DME	56°55'50.1"N 023°14'23.9"E