

STANDARD ARRIVAL CHART -
INSTRUMENT (STAR) - ICAO

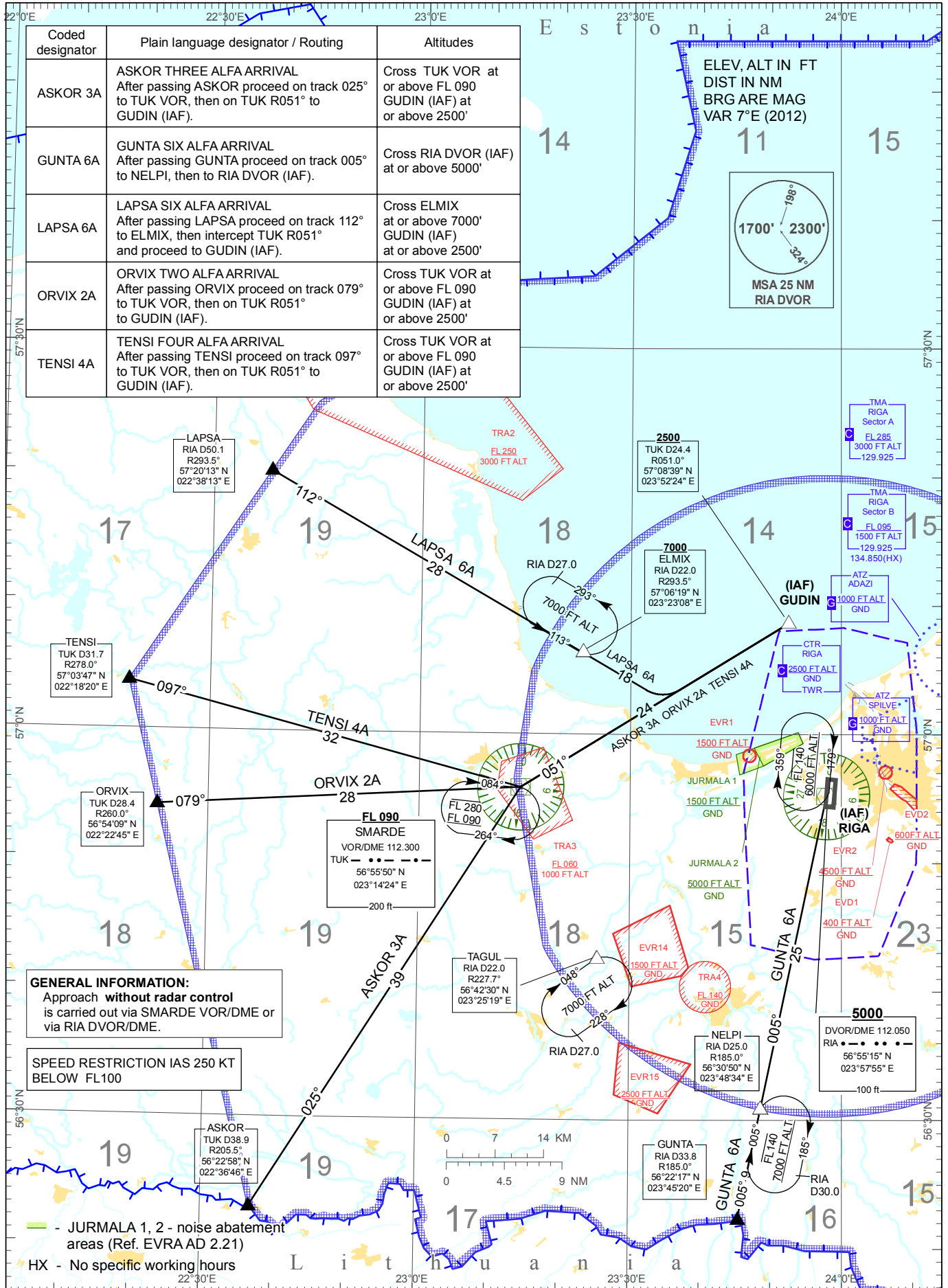
TRANSITION ALTITUDE
5000 ft

APP 129.925
134.850(HX)
TWR 118.100
ATIS 120.175

RIGA (EVRA)
RWY 18

direction (WEST)

ASKOR 3A GUNTA 6A LAPSA 6A
ORVIX 2A TENSI 4A



GENERAL INFORMATION:
Approach **without radar control** is carried out via SMARDE VOR/DME or via RIA DVOR/DME.

SPEED RESTRICTION IAS 250 KT BELOW FL100

JURMALA 1, 2 - noise abatement areas (Ref. EVRA AD 2.21)
HX - No specific working hours

Changes: EVD2 established

INTENTIONALLY LEFT BLANK