

STANDARD DEPARTURE CHART - INSTRUMENT (SID) - ICAO

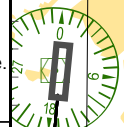
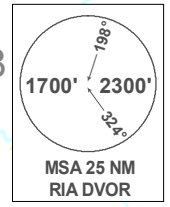
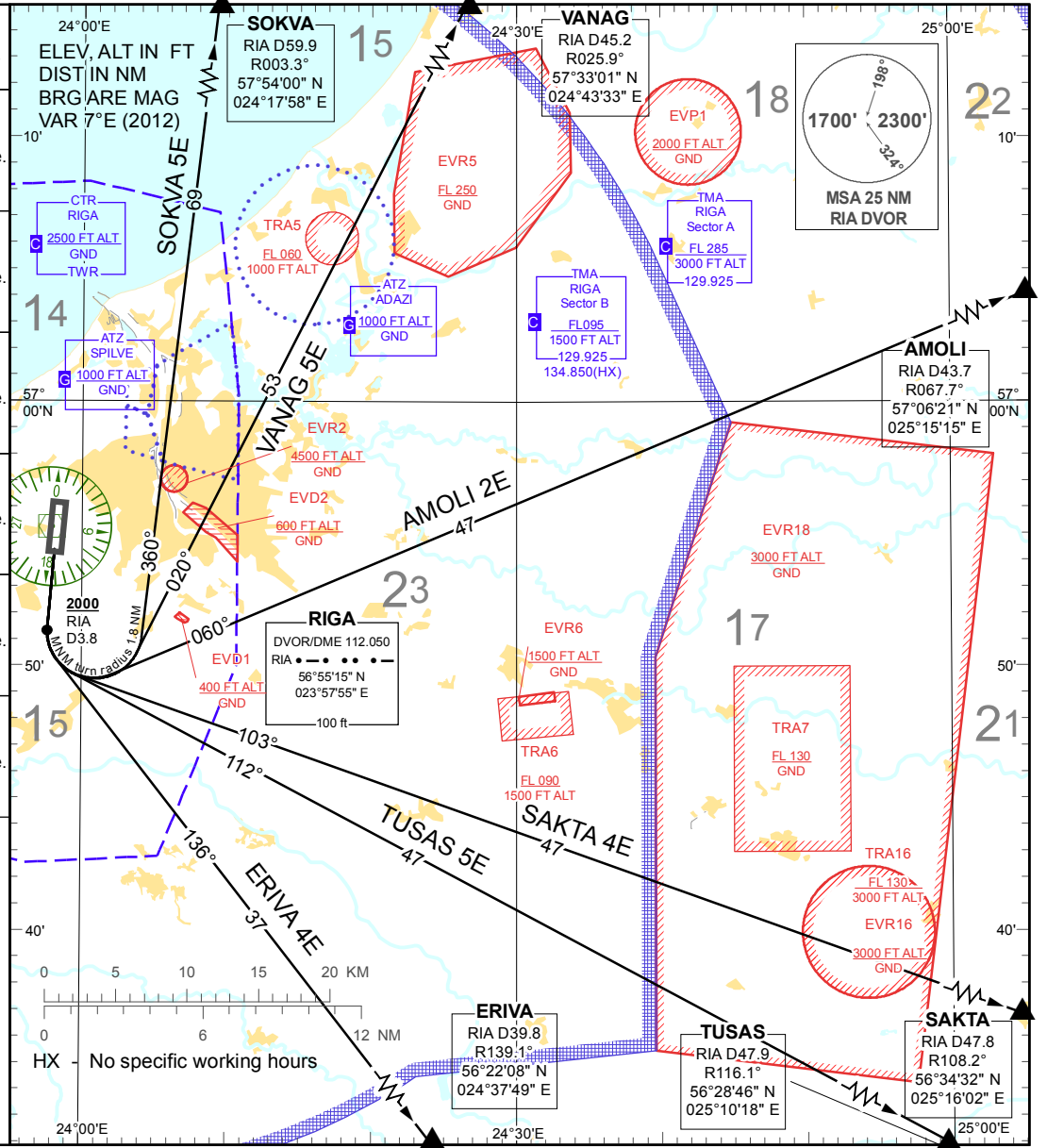
TRANSITION ALTITUDE
5000 ft

APP 129.925
134.850(HX)
TWR 118.100
ATIS 120.175
ACC 133.200

**RIGA (EVRA)
RWY 18**

direction (EAST)
AMOLI 2E ERIVA 4E SAKTA 4E
SOKVA 5E TUSAS 5E VANAG 5E

Coded designator	Plain language designator / Routing	Procedure Design Gradients (PDG) & Altitudes
AMOLI 2E	AMOLI TWO ECHO DEPARTURE Climb straight ahead on TR 178°. Not before 3.8 DME RIA at or above 2000 FT turn left (MNM turn radius 1.8 NM). Establish TR 060°. Proceed to AMOLI.	PDG 5.0% to 4000 FT to avoid unnecessary noise disturbance. PDG 3.3% to be clear of obstacles.
ERIVA 4E	ERIVA FOUR ECHO DEPARTURE Climb straight ahead on TR 178°. Not before 3.8 DME RIA at or above 2000 FT turn left (MNM turn radius 1.8 NM). Establish TR 136°. Proceed to ERIVA.	PDG 5.0% to 4000 FT to avoid unnecessary noise disturbance. PDG 3.3% to be clear of obstacles.
SAKTA 4E	SAKTA FOUR ECHO DEPARTURE Climb straight ahead on TR 178°. Not before 3.8 DME RIA at or above 2000 FT turn left (MNM turn radius 1.8 NM). Establish TR 103°. Proceed to SAKTA.	PDG 5.0% to 4000 FT to avoid unnecessary noise disturbance. PDG 3.3% to be clear of obstacles.
SOKVA 5E	SOKVA FIVE ECHO DEPARTURE Climb straight ahead on TR 178°. Not before 3.8 DME RIA at or above 2000 FT turn left (MNM turn radius 1.8 NM). Establish TR 360°. Proceed to SOKVA.	PDG 7.0% to 4000 FT to avoid unnecessary noise disturbance. PDG 3.3% to be clear of obstacles.
TUSAS 5E	TUSAS FIVE ECHO DEPARTURE Climb straight ahead on TR 178°. Not before 3.8 DME RIA at or above 2000 FT turn left (MNM turn radius 1.8 NM). Establish TR 112°. Proceed to TUSAS.	PDG 5.0% to 4000 FT to avoid unnecessary noise disturbance. PDG 3.3% to be clear of obstacles.
VANAG 5E	VANAG FIVE ECHO DEPARTURE Climb straight ahead on TR 178°. Not before 3.8 DME RIA at or above 2000 FT turn left (MNM turn radius 1.8 NM). Establish TR 020°. Proceed to VANAG.	PDG 7.0% to 4000 FT to avoid unnecessary noise disturbance. PDG 3.3% to be clear of obstacles.



For detailed description of the conditions and flights procedures refer to AIP EVRA AD 2.22.

NOTE:

1. Initial climb clearance 4000 FT unless otherwise is instructed by TWR;
2. Contact APP not later than passing 1500 ft after take-off;
3. Contact APP on 129.925 unless other frequency assigned by TWR;
4. MAX IAS 250 kt below FL 100;
5. If unable to comply SID contact ATC.

Changes: EVD2 established

INTENTIONALLY LEFT BLANK