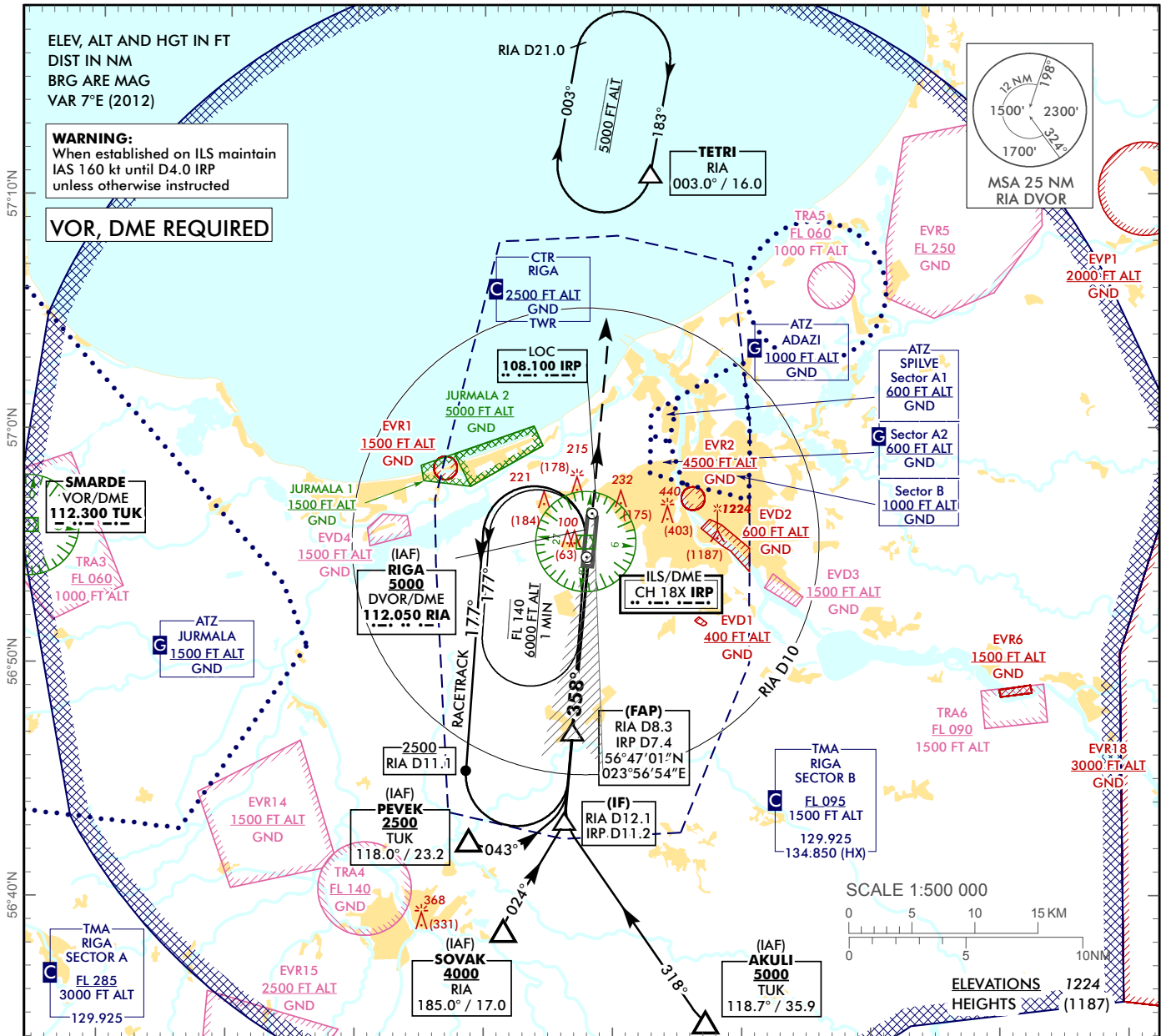


**INSTRUMENT
APPROACH
CHART - ICAO**

AERODROME ELEV 37 ft
HEIGHTS RELATED TO
THR RWY 36 - ELEV 37 ft

APP 129.925
TWR 118.105
ATIS 120.180

RIGA (EVRA)
ILS RWY 36



TRANSITION ALT 5000

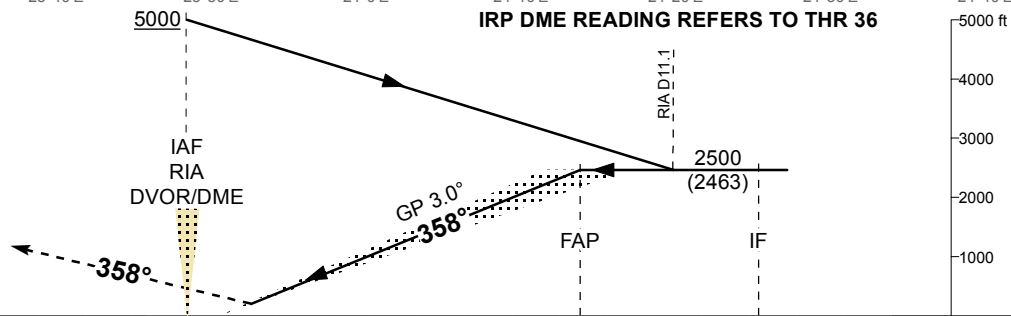
MISSED APPROACH

Climb on runway track to 2500,
after passing 1500 radar
vectoring will be provided.

COM FAILURE see
EVRA AD 2.22

ILS RDH 52

THR ELEV 37



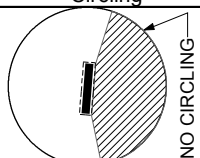
NM from THR RWY 36 8 7 6 5 4 3 2 1 0 1 2 3 4 5 6 7.4 8 9 10 11.2 12 13 14

OCA (H)		A	B	C	D	DME IRP	7	6	5	4	3	2	1
Straight-in	ILS Cat I	237 (200)				DME RIA	7.9	6.9	5.9	4.9	3.9	2.9	1.9
	ILS Cat II	(60)	(77)	(89)	(103)	DIST THR	7	6	5	4	3	2	1
Circling		530 (500)	630 (600)	730 (690)	ALTIMITUDE	2360	2030	1700	1380	1050	730	410	
						HEIGHT	(2323)	(1993)	(1663)	(1343)	(1013)	(693)	(373)
						GS	kt	80	100	120	140	160	180
						Rate of descent	ft/min	420	530	640	740	850	960

REMARK:
 - JURMALA 1, 2 - noise abatement areas (Ref. EVRA AD 2.21)
 HX - No specific working hours

For data tabulation see verso

Changes: holding TETRI updated.



RIGA (EVRA)

ILS RWY 36

AERONAUTICAL DATA TABULATION

ILS approach to RWY36 from RIA DVOR/DME, AKULI, PEVEK, SOVAK	
Fix/point	Coordinates
RIA DVOR/DME (IAF)	56°55'15.1"N 023°57'54.7"E
AKULI (IAF) R118.68° D35.95 TUK	56°34'43.5"N 024°07'12.3"E
PEVEK (IAF) R118.00° D23.16 TUK	56°42'29.7"N 023°48'50.1"E
SOVAK (IAF) R184.95° D17.02 RIA	56°38'37.8"N 023°51'31.5"E
RIA D8.28 IRP D7.41 (FAP)	56°47'00.7"N 023°56'53.6"E
RIA D12.09 IRP D11.23 (IF)	56°43'13.0"N 023°56'16.4"E
TETRI (Holding) R003.00° D16.00 RIA	57°10'58.4"N 024°03'01.1"E
THR RWY 36	56°54'23.22"N 023°58'06.08"E
IRP LOC	56°56'24.9"N 023°58'26.2"E
TUK VOR/DME	56°55'50.1"N 023°14'23.9"E