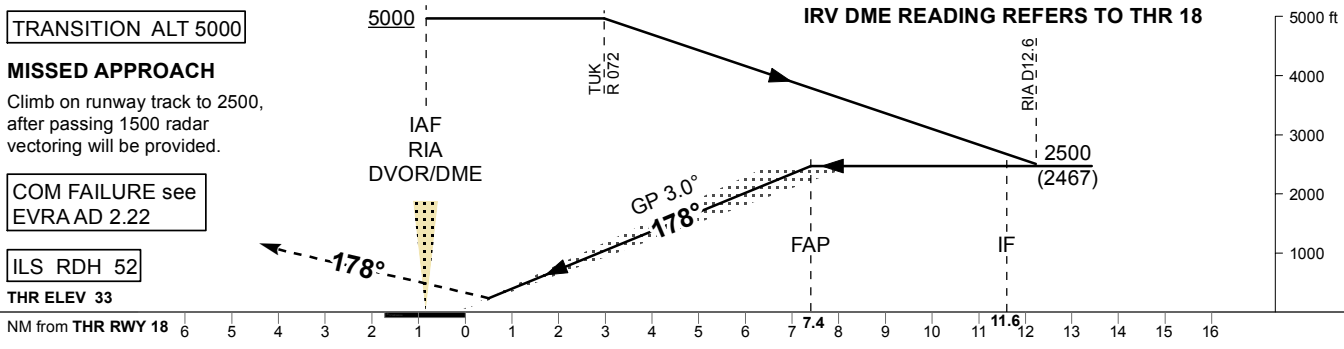
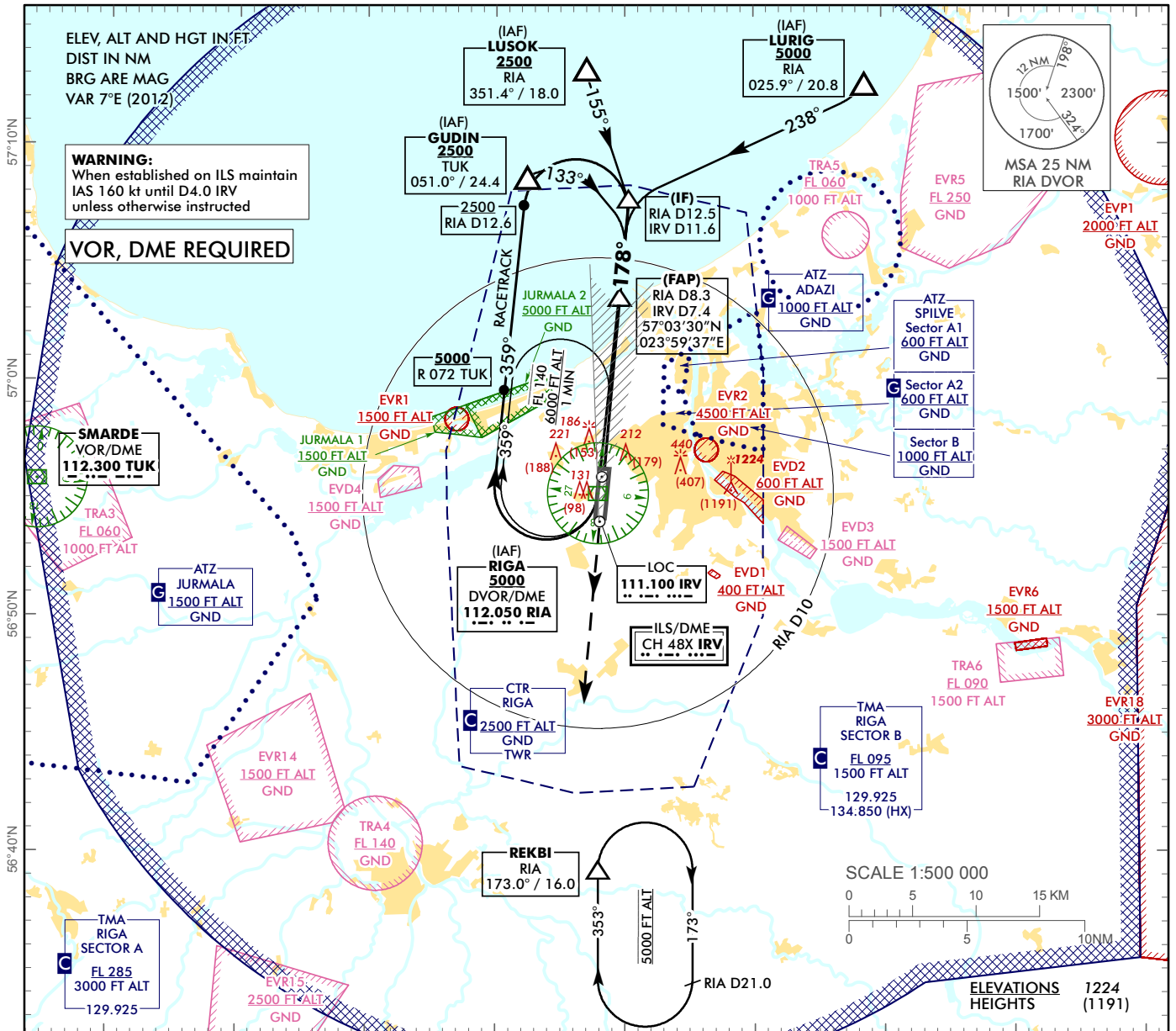


**INSTRUMENT
APPROACH
CHART - ICAO**

**AERODROME ELEV 37 ft
HEIGHTS RELATED TO
THR RWY 18 - ELEV 33 ft**

APP 129.925
134.850 (HX)
TWR 118.105
ATIS 120.180

**RIGA (EVRA)
ILS RWY 18**



Changes: holding REKBI updated.

RIGA (EVRA)

ILS RWY 18

AERONAUTICAL DATA TABULATION

ILS approach to RWY18 from RIA DVOR/DME, GUDIN, LURIG, LUSOK	
Fix/point	Coordinates
RIA DVOR/DME (IAF)	56°55'15.1"N 023°57'54.7"E
GUDIN (IAF) R051.00° D24.40 TUK	57°08'38.9"N 023°52'24.0"E
LURIG (IAF) R025.92° D20.77 RIA	57°12'37.6"N 024°18'40.4"E
LUSOK (IAF) R351.43° D18.05 RIA	57°13'15.3"N 023°57'00.1"E
RIA D8.30 IRV D7.43 (FAP)	57°03'29.5"N 023°59'36.7"E
RIA D12.46 IRV D11.59 (IF)	57°07'37.4"N 024°00'18.0"E
REKBI (Holding) R172.99° D16.01 RIA	56°39'16.7"N 023°57'55.0"E
THR RWY 18	56°56'06.25"N 023°58'23.08"E
IRV LOC	56°54'04.3"N 023°58'03.0"E
TUK VOR/DME	56°55'50.1"N 023°14'23.9"E