

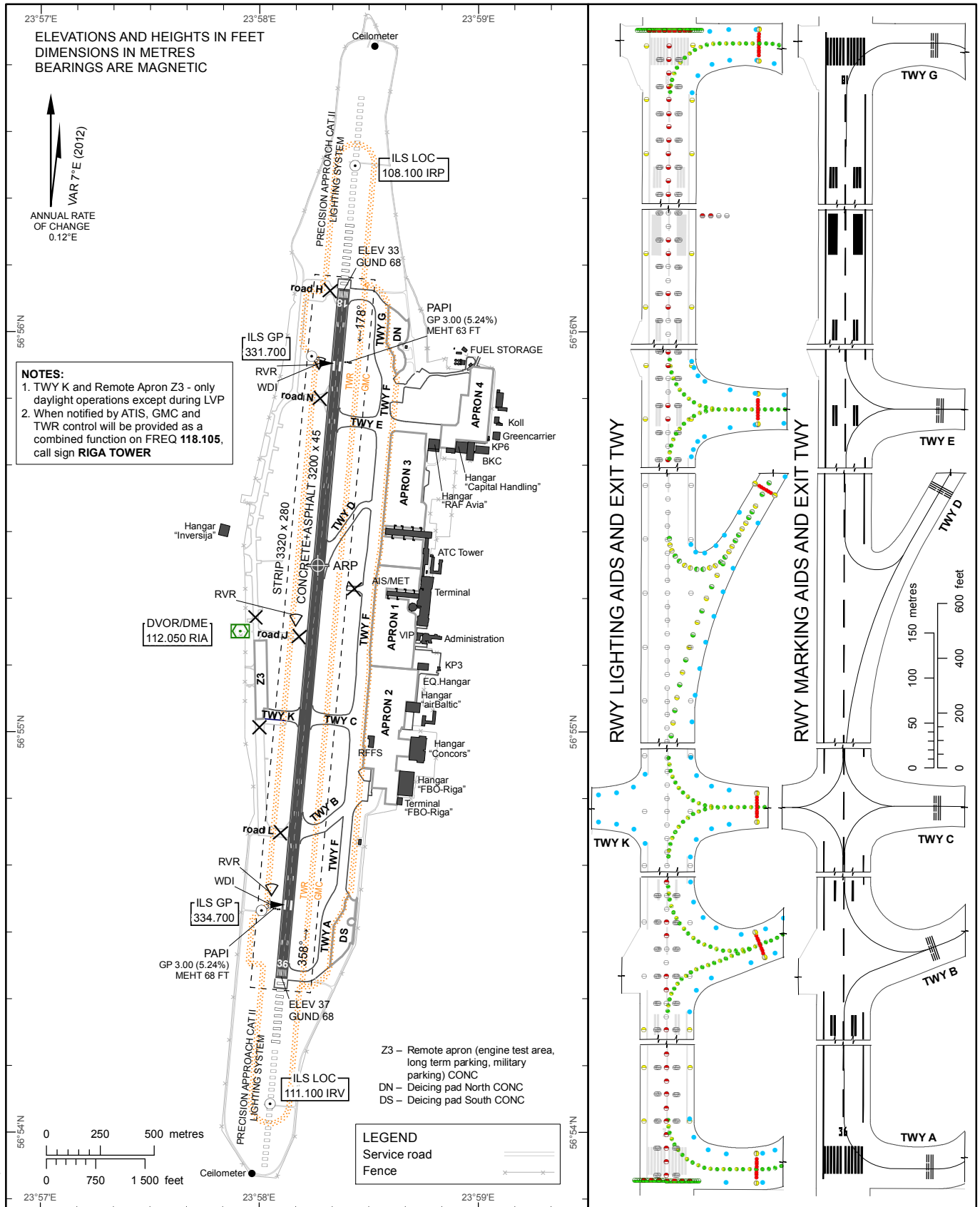
AERODROME CHART - ICAO

56°55'25"N
023°58'16"E

ELEV 37 FT

TWR	118.105
GMC	118.805
APRON	131.605
ATIS	120.180

RIGA



ELEVATIONS AND HEIGHTS IN FEET
DIMENSIONS IN METRES
BEARINGS ARE MAGNETIC



NOTES:
1. TWY K and Remote Apron Z3 - only daylight operations except during LVP
2. When notified by ATIS, GMC and TWR control will be provided as a combined function on FREQ 118.105, call sign RIGA TOWER

Z3 - Remote apron (engine test area, long term parking, military parking) CONC
DN - Deicing pad North CONC
DS - Deicing pad South CONC

LEGEND
Service road
Fence

RWY LIGHTING AIDS AND EXIT TWY

RWY MARKING AIDS AND EXIT TWY

TWY K

TWY C

TWY B

TWY A

TWY G

TWY E

TWY D

Changes: Z2 withdrawn, apron boundaries established, note added, editorial.

RWY	TRUE DIRECTION	THR	BEARING STRENGTH	
18	185.16°	56°56'06.25"N 023°58'23.08"E	PCN 89/F/C/X/T PCN 84/F/A/W/T PCN 89/F/C/W/T	RWY and TWY A, E TWY B, K TWY C TWY D TWY F TWY G
36	005.15°	56°54'23.22"N 023°58'06.08"E	PCN 50/F/C/X/T PCN 64/F/A/W/T PCN100/F/C/X/T	

Remarks:
1. APPROACH and RWY lighting see EVRA AD 2.14
2. RWY marking see EVRA AD 2.9
3. The rapid-exit TWY D is designed for Code C (max. wingspan 36 m) or smaller ACFT.

INTENTIONALLY LEFT BLANK