

**AERODROME GROUND
MOVEMENT CHART – ICAO**

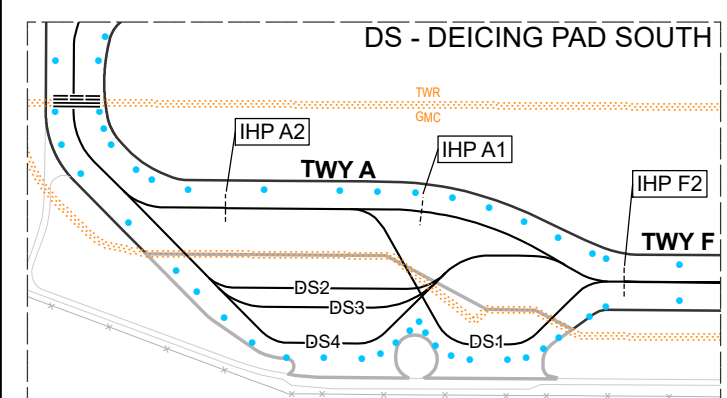
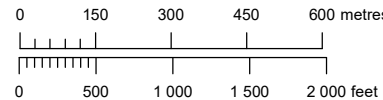
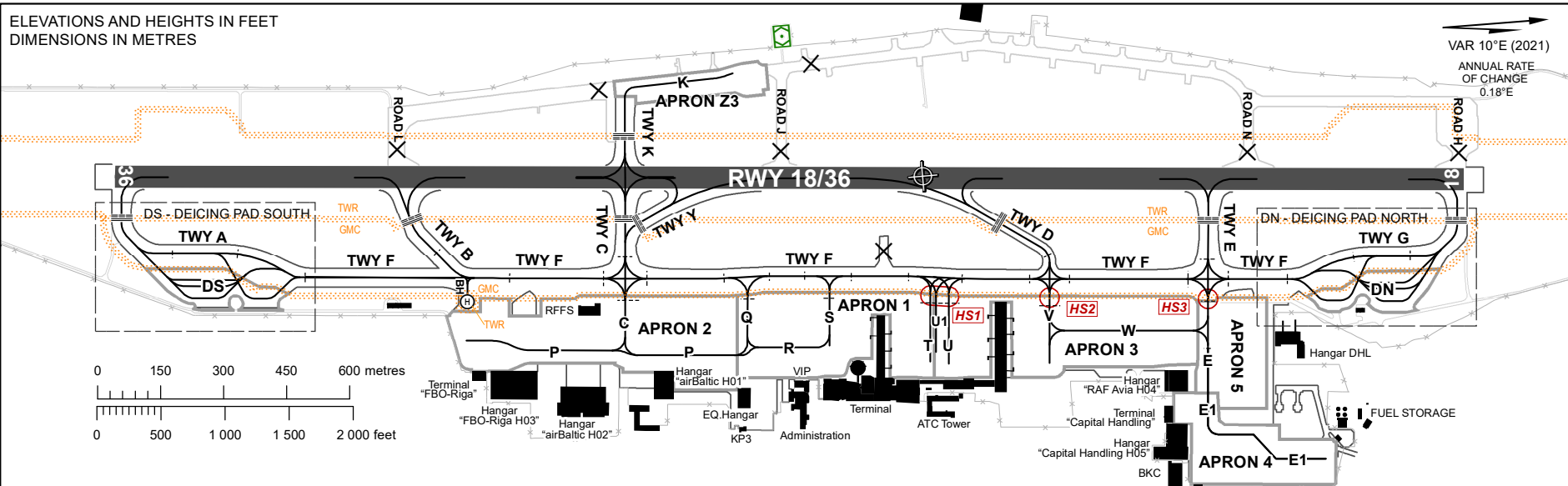
APRONS ELEV 33 FT

TWR	118.105	APRON	131.605
GMC	118.805	ATIS	120.180

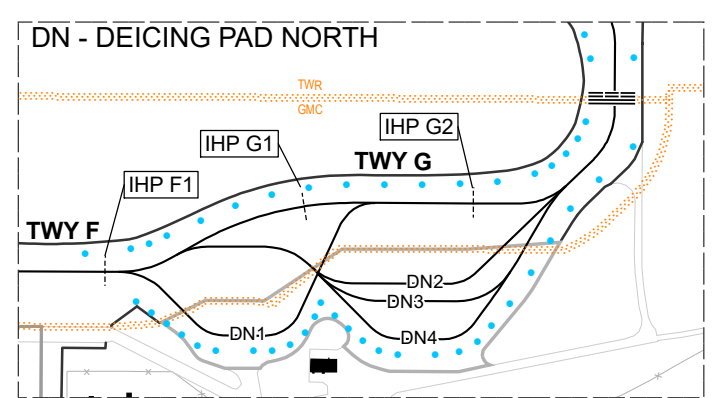
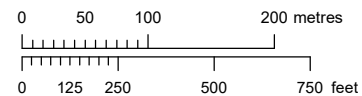
RIGA

ELEVATIONS AND HEIGHTS IN FEET
DIMENSIONS IN METRES

VAR 10°E (2021)
ANNUAL RATE
OF CHANGE
0.18°E



NOTES:
1. TWY K, TXL K and Apron Z3 - daylight operations only except during LVP, night operations by towing only.
2. When notified by ATIS, GMC and TWR control will be provided as a combined function on CH 118.105, call sign **RIGA TOWER**



TWY	WIDTH	SURFACE	BEARING STRENGTH
A	23 M	ASPH	PCN 65/F/A/W/T
B	23 M	ASPH	PCN 93/R/C/W/T
BH	8 M	CONC+ASPH	PCN 100/R/C/W/T
C	23 M	ASPH	PCN 97/R/C/W/T
D	18 M	ASPH	PCN 88/F/C/W/T
E	23 M	ASPH	PCN 71/F/A/W/T
F	23 M	CONC+ASPH	PCN 77/F/A/W/T
G	23 M	ASPH	PCN 95/R/C/W/T
K	23 M	ASPH	PCN 120/R/C/W/T
Y	23 M	ASPH	PCN 65/F/A/W/T

APRON Z3 – Long term parking, military parking ASPH
H, J, L, N – Roads
E – Apron TWY
BH – Helipad TWY
C, E1, K, P, Q, R, S, T, U, U1, V, W – Taxilanes
DS3 – Isolated parking area (available in emergencies), engine test area

DN – Deicing Pad North
DN1 – CONC+ASPH PCN 120/R/C/W/T
DN2 – CONC+ASPH PCN 120/F/A/W/T
DN3-4 – CONC+ASPH PCN 120/R/C/W/T

DS – Deicing Pad South
DS1 – CONC+ASPH PCN 120/R/C/W/T
DS2 – CONC+ASPH PCN 120/F/A/W/T
DS3-4 – CONC+ASPH PCN 120/R/C/W/T

HOT SPOTS
HS1, HS3 - Increased ground vehicle movement
HS2 - Increased ground vehicle movement.
Slow down from rapid-exit TWY D before crossing TWY F and service road to TLN V

REMARKS
1. The rapid-exit TWY D is designed for code C (max. wingspan 36 m) or smaller ACFT.
2. The rapid-exit TWY Y when using RWY 36 is designed for code C (max. wingspan 36 m) or smaller ACFT.

LEGEND

- Hot spot
- Taxiway edge light
- Pavement boundary
- Apron, deicing pad boundary
- Service road
- Fence

Changes: helipad, TWY BH established, Apron 2, TXL P, ATC service boundary, fence updated

INTENTIONALLY LEFT BLANK