

STANDARD ARRIVAL CHART - INSTRUMENT (STAR) - ICAO

TRANSITION ALTITUDE 5000 FT

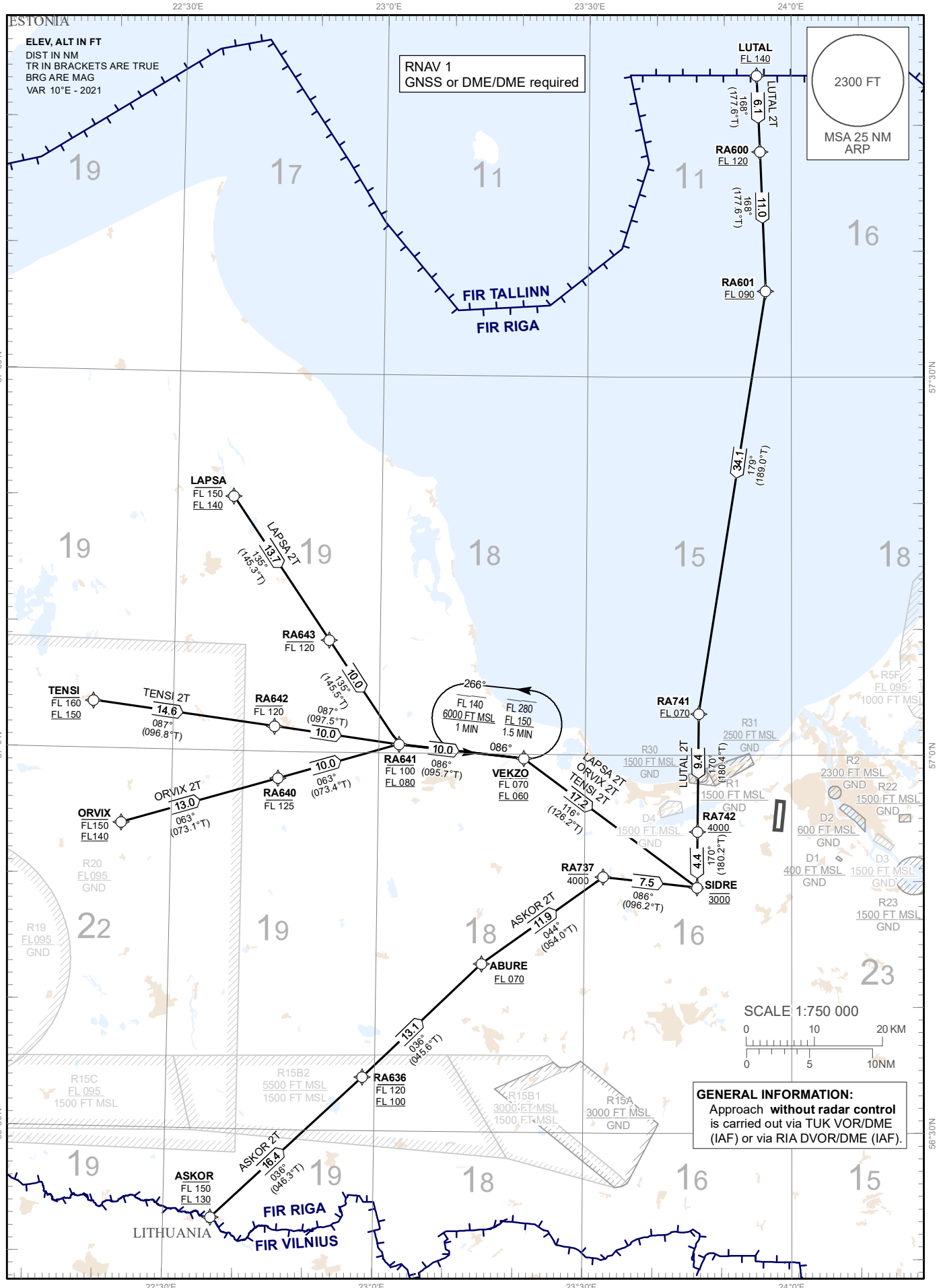
APP 129.925
134.850 (HX)
TWR 118.105
ATIS 120.180

MAX IAS 250 kt BELOW FL100

RIGA (EVRA)
RNAV RWY36
(direction WEST)

ASKOR 2T, LAPSA 2T, LUTAL 2T, ORVIX 2T, TENSI 2T

Changes: Noise abatement areas withdrawn, R30, R31 established, chart identification and PBN box updated, editorial.



RNAV PROCEDURE CODING TABLES

ASKOR 2T										
Serial Number	Path Descriptor	Waypoint Identifier	Flyover	Course °M (°T)	Magnetic Variation (°)	Distance NM	Turn Direction	Altitude FT	Speed KT	Navigation Specification
10	IF	ASKOR	-	-	+10.0	-	-	+130 FL/-150 FL	-280	RNAV 1
20	TF	RA636	-	036 (046.3)	+10.0	16.4	L	+100 FL/-120 FL	-240	RNAV 1
30	TF	ABURE	-	036 (045.6)	+10.0	13.1	L	+070 FL		RNAV 1
40	TF	RA737	-	044 (054.0)	+10.0	11.9	R	-4000		RNAV 1
50	TF	SIDRE	-	086 (096.2)	+10.0	7.5	R	@3000	-210	RNAV 1

LAPSA 2T										
Serial Number	Path Descriptor	Waypoint Identifier	Flyover	Course °M (°T)	Magnetic Variation (°)	Distance NM	Turn Direction	Altitude FT	Speed KT	Navigation Specification
10	IF	LAPSA	-	-	+10.0	-	-	+140 FL/-150 FL	-280	RNAV 1
20	TF	RA643	-	135 (145.3)	+10.0	13.7	R	-120 FL		RNAV 1
30	TF	RA641	-	135 (145.5)	+10.0	10.0	L	+080 FL/-100 FL	-240	RNAV 1
40	TF	VEKZO	-	086 (095.7)	+10.0	10.0	L	+060 FL/-070 FL	-230	RNAV 1
50	TF	SIDRE	-	116 (126.2)	+10.0	17.2	R	@3000	-210	RNAV 1

LUTAL 2T										
Serial Number	Path Descriptor	Waypoint Identifier	Flyover	Course °M (°T)	Magnetic Variation (°)	Distance NM	Turn Direction	Altitude FT	Speed KT	Navigation Specification
10	IF	LUTAL	-	-	+10.0	-	-	+140 FL	-280	RNAV 1
20	TF	RA600	-	168 (177.6)	+10.0	6.1	L	+120 FL		RNAV 1
30	TF	RA601	-	168 (177.6)	+10.0	11.0	L	+090 FL		RNAV 1
40	TF	RA741	-	179 (189.0)	+10.0	34.1	R	+070 FL	-220	RNAV 1
50	TF	RA742	-	170 (180.4)	+10.0	9.4	L	+4000	-210	RNAV 1
60	TF	SIDRE	-	170 (180.2)	+10.0	4.4	L	@3000	-210	RNAV 1

ORVIX 2T										
Serial Number	Path Descriptor	Waypoint Identifier	Flyover	Course °M (°T)	Magnetic Variation (°)	Distance NM	Turn Direction	Altitude FT	Speed KT	Navigation Specification
10	IF	ORVIX	-	-	+10.0	-	-	+140 FL/-150 FL	-280	RNAV 1
20	TF	RA640	-	063 (073.1)	+10.0	13.0	L	-125 FL		RNAV 1
30	TF	RA641	-	063 (073.4)	+10.0	10.0	L	+080 FL/-100 FL	-240	RNAV 1
40	TF	VEKZO	-	086 (095.7)	+10.0	10.0	R	+060 FL/-070 FL	-230	RNAV 1
50	TF	SIDRE	-	116 (126.2)	+10.0	17.2	R	@3000	-210	RNAV 1

TENSI 2T										
Serial Number	Path Descriptor	Waypoint Identifier	Flyover	Course °M (°T)	Magnetic Variation (°)	Distance NM	Turn Direction	Altitude FT	Speed KT	Navigation Specification
10	IF	TENSI	-	-	+10.0	-	-	+150 FL/-160 FL	-280	RNAV 1
20	TF	RA642	-	087 (096.8)	+10.0	14.6	L	-120 FL		RNAV 1
30	TF	RA641	-	087 (097.5)	+10.0	10.0	R	+080 FL/-100 FL	-240	RNAV 1
40	TF	VEKZO	-	086 (095.7)	+10.0	10.0	L	+060 FL/-070 FL	-230	RNAV 1
50	TF	SIDRE	-	116 (126.2)	+10.0	17.2	R	@3000	-210	RNAV 1

WAYPOINT COORDINATES

WPT	COORD	
ABURE	564323.71N	0231514.90E
ASKOR	562258.00N	0223646.00E
LAPSA	572013.00N	0223813.00E
LUTAL	575358.00N	0235453.00E
ORVIX	565409.00N	0222245.00E
SIDRE	564931.08N	0234620.70E
TENSI	570347.00N	0221820.00E
VEKZO	565941.96N	0232106.90E

WPT	COORD	
RA600	574753.06N	0235521.40E
RA601	573653.33N	0235612.50E
RA636	563416.96N	0225815.90E
RA640	565752.69N	0224524.30E
RA641	570042.44N	0230256.00E
RA642	570201.47N	0224448.20E
RA643	570856.23N	0225234.30E
RA737	565020.15N	0233244.40E
RA741	570317.10N	0234630.00E
RA742	565356.07N	0234622.10E

RNAV HOLDINGS

Waypoint Identifier	INBD °M (°T)	Turn Direction	MNM/MAX HLDG	Speed KT	Time
VEKZO	086 (095.7)	L	+6000/-140FL	-240	1 MIN
565941.96N 0232106.90E			+150FL/-280FL	-265	1.5 MIN