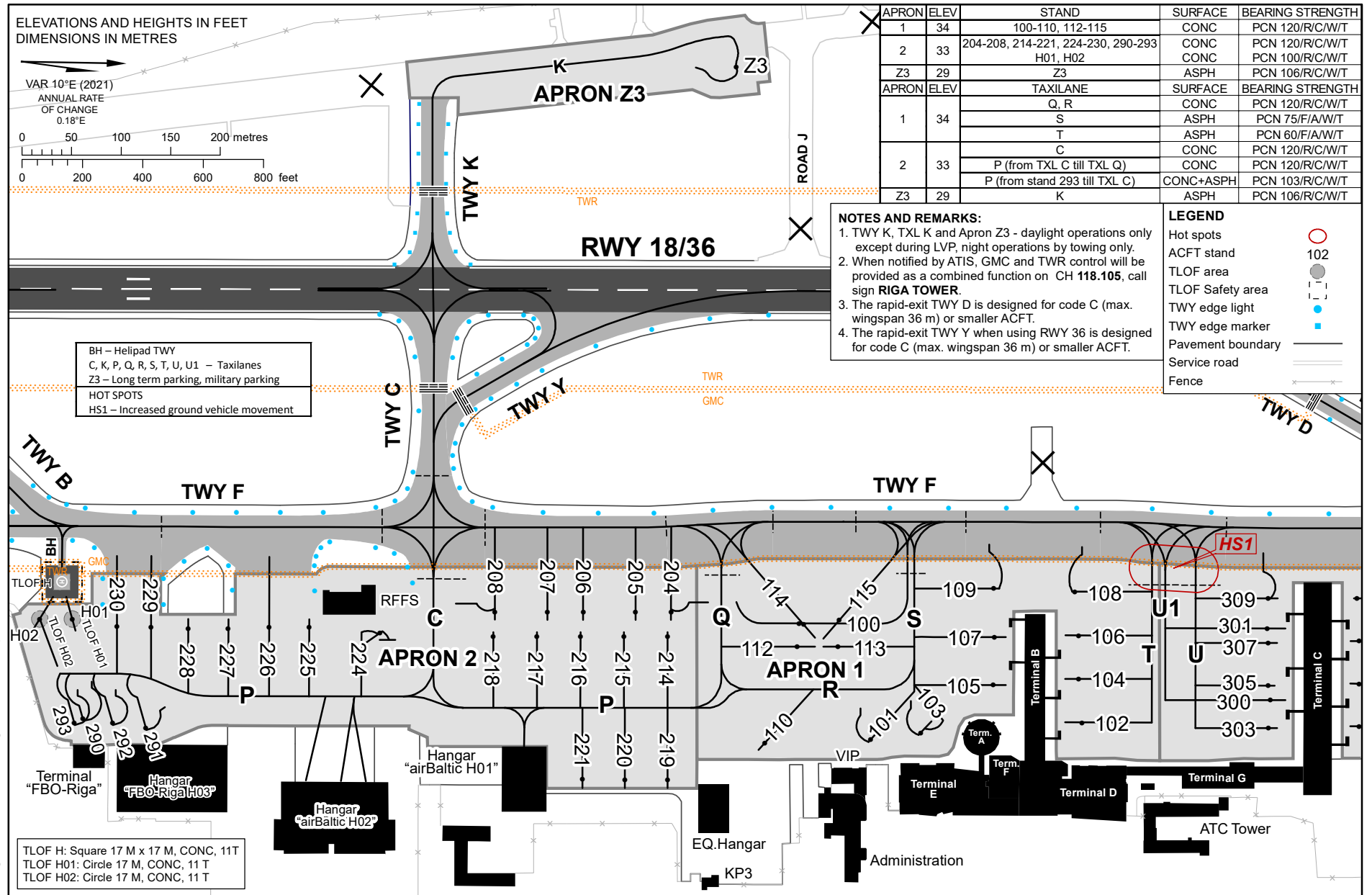


AIRCRAFT PARKING/
DOCKING CHART – ICAO

APRONS ELEV 33 FT

TWR	118.105	APRON	131.605
GMC	118.805	ATIS	120.180

RIGA
APRON 1, 2, Z3



Changes: stands 204-208, guidance lines updated.

RIGA

STAND CHARACTERISTICS

APRON	STAND	STANDARD TAXI ROUTE				COORDINATES		PUSHBACK REQUIRED	MAX WINGSPAN (M)	MAX LENGTH (M)
		ARR 18	DEP 18	ARR 36	DEP 36	LATITUDE	LONGITUDE			
1	100	B-F	Q-F-G	E-F	Q-F-A	56 55 13.10 N	023 58 34.28 E	N	64.99	75.50
1	101	Y-C-F-S	R-Q-F-G	D-F-S	R-Q-F-A	56 55 15.09 N	023 58 41.56 E	N	29.00	32.99
1	102	Y-C-F-T	T-F-G	D-F-T	T-F-A	56 55 22.02 N	023 58 41.66 E	Y	35.99	44.51
1	103	Y-C-F-S	S-F-G	D-F-S	S-F-A	56 55 16.74 N	023 58 41.43 E	N	29.99	32.99
1	104	Y-C-F-T	T-F-G	D-F-T	T-F-A	56 55 22.04 N	023 58 39.05 E	Y	35.99	44.51
1	105	Y-C-F-S	S-F-G	D-F-S	S-F-A	56 55 19.24 N	023 58 38.97 E	Y	35.99	44.51
1	106	Y-C-F-T	T-F-G	D-F-T	T-F-A	56 55 22.16 N	023 58 36.47 E	Y	35.99	44.51
1	107	B-F-S	S-F-G	E-F-S	S-F-A	56 55 19.42 N	023 58 36.12 E	Y	51.99	61.50
1	108	Y-C-F-T	F-G	D-F-T	F-A	56 55 22.16 N	023 58 33.84 E	N	35.99	44.51
1	109	Y-C-F-S	F-G	D-F-S	F-A	56 55 19.54 N	023 58 33.24 E	N	35.99	44.51
1	110	Y-C-F-S-R	R-Q-F-G	D-F-S-R	R-Q-F-A	56 55 11.64 N	023 58 41.20 E	Y	35.99	39.50
1	112	Y-C-F-Q	Q-F-G	D-F-Q	Q-F-A	56 55 12.97 N	023 58 35.66 E	Y	35.99	44.51
1	113	Y-C-F-S	S-F-G, R-Q-F-G	D-F-S	S-F-A, R-Q-F-A	56 55 14.31 N	023 58 35.87 E	Y	35.99	44.51
1	114	B-F	F-G	E-F	F-A	56 55 13.24 N	023 58 34.37 E	Y	51.99	61.50
1	115	B-F	F-G	E-F	F-A	56 55 14.42 N	023 58 34.31 E	Y	42.00	48.00
2	204	Y-C-F	Q-F-G	D-F	Q-F-A	56 55 08.97 N	023 58 32.94 E	Y/N	27.05	36.24
2	205	Y-C-F	F-G	D-F	F-A	56 55 07.81 N	023 58 32.74 E	Y	35.92	39.48
2	206	Y-C-F	F-G	D-F	F-A	56 55 06.11 N	023 58 32.46 E	Y	27.05	36.24
2	207	Y-C-F	F-G	D-F	F-A	56 55 04.94 N	023 58 32.27 E	Y	35.92	39.48
2	208	Y-C-F	C-F-G	D-F	C-F-A	56 55 03.23 N	023 58 31.99 E	Y/N	35.92	39.48
2	214	Y-C-P	P-Q-F-G	D-F-Q-P	P-Q-F-A	56 55 08.78 N	023 58 34.37 E	Y	35.99	44.51
2	215	Y-C-P	P-Q-F-G	D-F-Q-P	P-Q-F-A	56 55 07.36 N	023 58 34.14 E	Y	35.99	44.51
2	216	Y-C-P	P-C-F-G	D-F-C-P	P-C-F-A	56 55 05.95 N	023 58 33.91 E	Y	35.99	44.51
2	217	Y-C-P	P-C-F-G	D-F-C-P	P-C-F-A	56 55 04.53 N	023 58 33.67 E	Y	35.99	44.51
2	218	Y-C-P	P-C-F-G	D-F-C-P	P-C-F-A	56 55 03.11 N	023 58 33.44 E	Y	35.99	44.51
2	219	Y-C-P	P-Q-F-G	D-F-Q-P	P-Q-F-A	56 55 08.37 N	023 58 42.87 E	Y	35.99	44.51
2	220	Y-C-P	P-Q-F-G	D-F-Q-P	P-Q-F-A	56 55 06.98 N	023 58 42.64 E	Y	35.99	44.51
2	221	Y-C-P	P-Q-F-G	D-F-Q-P	P-Q-F-A	56 55 05.60 N	023 58 42.41 E	Y	35.99	44.51
2	224	Y-C-P	C-F-G	D-F-C-P	C-F-A	56 54 59.44 N	023 58 32.64 E	N	23.99	36.40
2	225	Y-C-P	P-C-F-G	D-F-C-P	P-C-F-A	56 54 57.15 N	023 58 31.93 E	Y	35.99	44.51
2	226	Y-C-P	F-G	D-F-C-P	F-A	56 54 55.84 N	023 58 31.71 E	N	35.99	44.51
2	227	Y-C-P	P-C-F-G	D-F-C-P	P-C-F-A	56 54 54.51 N	023 58 31.58 E	Y	35.99	44.51
2	228	Y-C-P	P-C-F-G	D-F-C-P	P-C-F-A	56 54 53.21 N	023 58 31.37 E	Y	35.99	44.51
2	229	Y-C-P	F-G	E-F-C-P	F-A	56 54 52.00 N	023 58 31.09 E	N	28.91	31.10
2	230	Y-C-P	F-G	E-F-C-P	F-A	56 54 50.89 N	023 58 30.89 E	N	28.50	29.94
2	290	Y-C-P	P-C-F-G	E-F-C-P	P-C-F-A	56 54 49.52 N	023 58 36.20 E	Y/N	35.99	44.60
2	291	Y-C-P	P-C-F-G	E-F-C-P	P-C-F-A	56 54 51.54 N	023 58 37.06 E	Y/N	23.80	28.50
2	292	Y-C-P	P-C-F-G	E-F-C-P	P-C-F-A	56 54 50.47 N	023 58 36.60 E	Y/N	30.40	30.50
2	293	Y-C-P	P-C-F-G	E-F-C-P	P-C-F-A	56 54 49.23 N	023 58 36.39 E	Y/N	30.40	30.50
3	300	B-F-U1	U1-F-G	E-F-U1	U1-F-A	56 55 28.21 N	023 58 41.33 E	Y	64.99	75.99
3	301	B-F-U1	U1-F-G	E-F-U1	U1-F-A	56 55 28.32 N	023 58 37.04 E	Y	64.99	70.99
3	302	Y-C-F-V	V-F-G	D-F-V	V-F-A	56 55 31.03 N	023 58 43.35 E	Y	35.99	39.50
3	303	Y-C-F-U	U-F-G	D-F-U	U-F-A	56 55 28.07 N	023 58 42.98 E	Y	35.99	44.51
3	304	Y-C-F-V	V-F-G	D-F-V	V-F-A	56 55 31.15 N	023 58 40.82 E	Y	35.99	44.51
3	305	Y-C-F-U	U-F-G	D-F-U	U-F-A	56 55 28.19 N	023 58 40.45 E	Y	35.99	44.51
3	306	Y-C-F-V	V-F-G	D-F-V	V-F-A	56 55 31.28 N	023 58 38.28 E	Y	35.99	44.51
3	307	Y-C-F-U	U-F-G	D-F-U	U-F-A	56 55 28.31 N	023 58 37.92 E	Y	35.99	45.06
3	308	Y-C-F-V	V-F-G	D-F-V	V-F-A	56 55 31.33 N	023 58 35.73 E	Y	35.99	44.51
3	309	Y-C-F-U	F-G	D-F-U	F-A	56 55 28.44 N	023 58 35.27 E	N	35.99	44.51
3	311	Y-C-F-V-W	F-G	D-V-W	F-A	56 55 35.63 N	023 58 35.67 E	N	35.99	38.71
3	312	Y-C-F-V-W	F-G	D-V-W	F-A	56 55 37.13 N	023 58 35.91 E	N	35.99	38.71
3	313	Y-C-F-V-W	F-G	D-V-W	F-A	56 55 38.51 N	023 58 36.14 E	N	35.99	38.71
3	314	Y-C-F-V-W	F-G	D-V-W	F-A	56 55 39.90 N	023 58 36.37 E	N	35.99	38.71
3	315	Y-C-F-V-W	F-G	D-V-W	F-A	56 55 41.39 N	023 58 36.61 E	N	35.99	38.71
3	316	Y-C-F-V-W	F-G	D-V-W	F-A	56 55 42.78 N	023 58 36.84 E	N	35.99	38.71
3	317	Y-C-F-V-W	F-G	D-V-W	F-A	56 55 44.16 N	023 58 37.06 E	N	31.99	35.53
3	321	Y-C-F-V-W	W-E-F-G	D-V-W	W-E-F-A	56 55 35.23 N	023 58 43.88 E	Y	35.99	45.06
3	322	Y-C-F-V-W	W-E-F-G	D-V-W	W-E-F-A	56 55 36.64 N	023 58 44.11 E	Y	35.99	45.06
3	323	Y-C-F-V-W	W-E-F-G	D-V-W	W-E-F-A	56 55 38.06 N	023 58 44.34 E	Y	35.99	45.06
3	324	Y-C-F-V-W	W-E-F-G	D-V-W	W-E-F-A	56 55 39.48 N	023 58 44.57 E	Y	35.99	45.06
3	325	Y-C-F-V-W	W-E-F-G	D-V-W	W-E-F-A	56 55 40.90 N	023 58 44.81 E	Y	35.99	45.06
3	326	Y-C-F-V-W	W-E-F-G	D-V-W	W-E-F-A	56 55 42.33 N	023 58 44.78 E	Y	35.99	44.51
3	327	Y-C-F-V-W	W-E-F-G	D-V-W	W-E-F-A	56 55 43.74 N	023 58 45.03 E	Y	33.99	40.74
4	401	B-F-E-E1	E1-E-F-G	E-E1	E1-E-F-A	56 55 44.27 N	023 59 01.24 E	Y	42.00	55.00
4	402	B-F-E-E1	E1-E-F-G	E-E1	E1-E-F-A	56 55 47.26 N	023 59 01.74 E	Y	42.00	55.00
4	461	Y-C-F-E-E1	E1-E-F-G	E-E1	E1-E-F-A	56 55 42.91 N	023 58 52.85 E	Y	23.99	30.30
4	462	Y-C-F-E-E1	E1-E-F-G	E-E1	E1-E-F-A	56 55 43.05 N	023 58 51.04 E	Y	28.65	30.30
4	467	Y-C-F-E-E1	E1-E-F-G	E-E1	E1-E-F-A	56 55 44.56 N	023 59 01.34 E	Y	35.99	45.06
4	468	Y-C-F-E-E1	E1-E-F-G	E-E1	E1-E-F-A	56 55 45.91 N	023 59 01.56 E	Y	35.99	45.06
4	469	Y-C-F-E-E1	E1-E-F-G	E-E1	E1-E-F-A	56 55 47.34 N	023 59 01.78 E	Y	35.99	45.06
4	470	Y-C-F-E-E1	E1-E-F-G	E-E1	E1-E-F-A	56 55 48.69 N	023 59 02.00 E	Y	35.99	45.06
4	471	Y-C-F-E-E1	E1-E-F-G	E-E1	E1-E-F-A	56 55 51.24 N	023 58 58.02 E	Y/N	20.00	20.91
4	472	Y-C-F-E-E1	E1-E-F-G	E-E1	E1-E-F-A	56 55 52.17 N	023 58 58.17 E	Y/N	23.93	20.91
4	473	Y-C-F-E-E1	E1-E-F-G	E-E1	E1-E-F-A	56 55 53.11 N	023 58 58.33 E	Y/N	22.00	20.91
4	474	Y-C-F-E-E1	E1-E-F-G	E-E1	E1-E-F-A	56 55 54.03 N	023 58 58.49 E	Y/N	22.00	20.91
4	475	Y-C-F-E-E1	E1-E-F-G	E-E1	E1-E-F-A	56 55 50.07 N	023 59 02.82 E	Y/N	22.00	29.87
4	476	Y-C-F-E-E1	E1-E-F-G	E-E1	E1-E-F-A	56 55 51.00 N	023 59 02.97 E	Y/N	23.93	32.51
4	477	Y-C-F-E-E1	E1-E-F-G	E-E1	E1-E-F-A	56 55 51.94 N	023 59 03.13 E	Y/N	22.75	29.87
4	478	Y-C-F-E-E1	E1-E-F-G	E-E1	E1-E-F-A	56 55 52.87 N	023 59 03.28 E	Y/N	23.25	32.51
4	479	Y-C-F-E-E1	E1-E-F-G	E-E1	E1-E-F-A	56 55 53.79 N	023 59 03.44 E	Y/N	22.00	29.87
5	501	B-F-E	E-F-G	E	E-F-A	56 55 49.62 N	023 58 40.19 E	Y	73.30	76.26
5	502	B-F-E	E-F-G	E	E-F-A	56 55 49.23 N	023 58 45.02 E	Y	68.40	76.26
5	503	B-F-E	E-F-G	E	E-F-A	56 55 49.00 N	023 58 49.64 E	Y	68.40	76.26
5	511	Y-C-F-E	E-F-G	D-F-E	E-F-A	56 55 49.44 N	023 58 38.88 E	Y	35.99	44.51
5	512	Y-C-F-E	E-F-G	D-F-E	E-F-A	56 55 49.32 N	023 58 41.42 E	Y	35.99	44.51
Z3	Z3	K	K-C-F-G	E-F-C-K	K-C-F-A	56 55 12.66 N	023 58 00.87 E	N	42.36	45.09

For helicopter stands see EVRA AD 2.24.2.4