

**INSTRUMENT APPROACH CHART - ICAO**

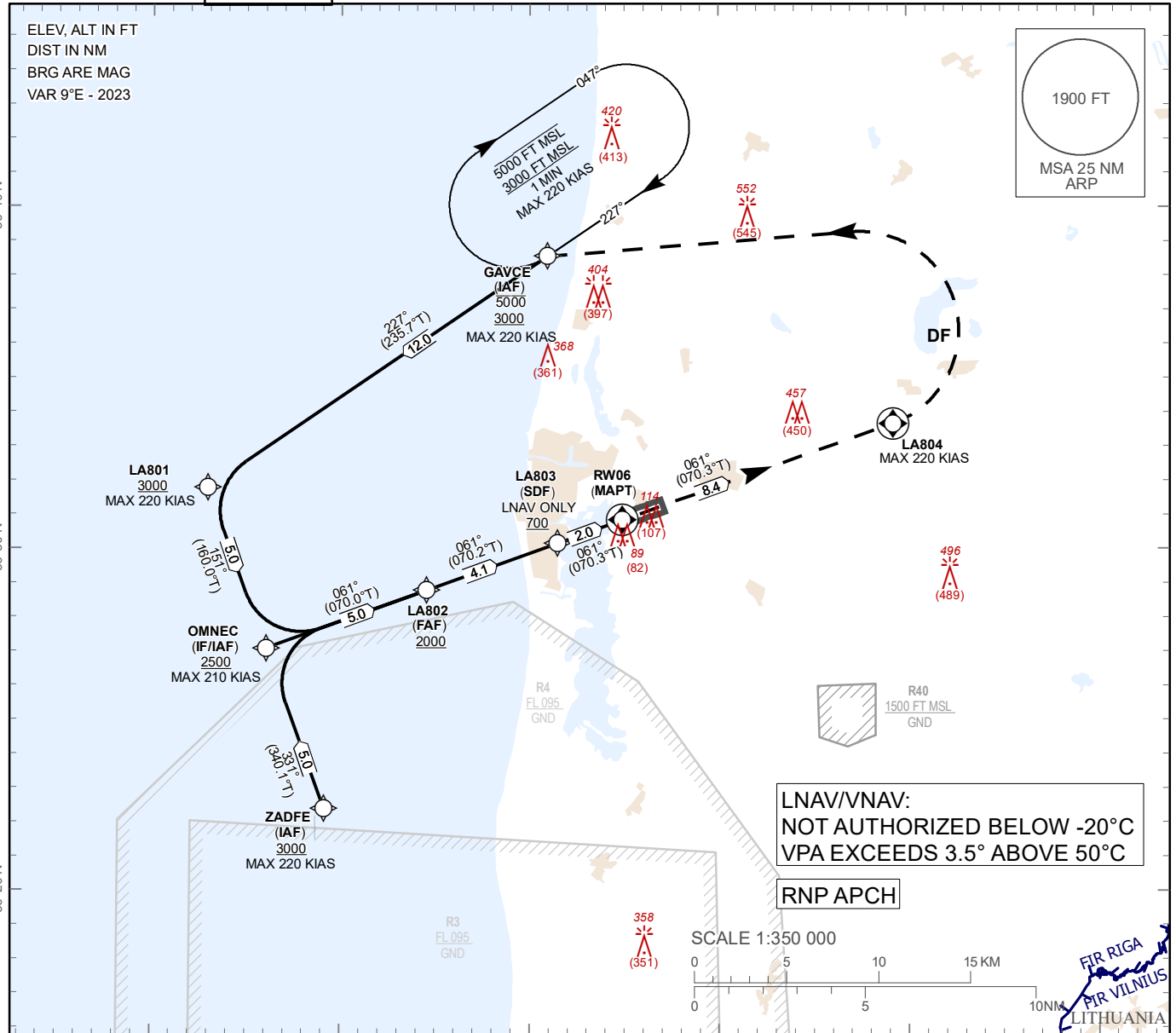
**SBAS CH 45137 E06A**

**AERODROME ELEV 18 ft**  
**HEIGHTS RELATED TO THR RWY 06 - ELEV 7 ft**

AFIS 129.400

**LIEPAJA (EVLA)**

**RNP RWY 06**



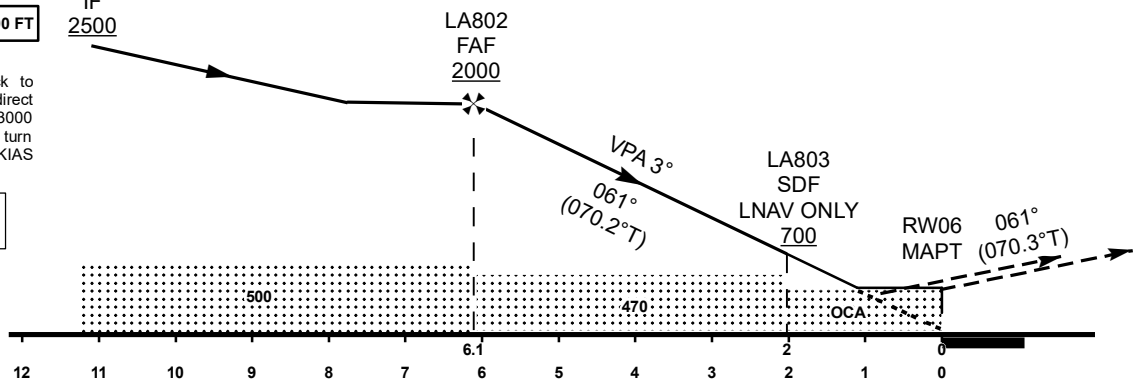
**TRANSITION ALT 5000 FT**

**IF 2500**  
 MISSED APPROACH  
 Climb on runway track to LA804, then turn left, direct to GAVCE, climbing to 3000 FT. Missed approach turn speed limited 220 KIAS maximum.

COM FAILURE see EVLAAD 2.22

**TCH 50**

THR ELEV 7 FT  
 NM from THR 06



OCA (H)		A	B	C	D
Straight-in Approach	LNAV	410(410)			
	LNAV/VNAV	237(231)	250(243)	264(258)	274(268)
	LPV	193(186)	206(199)	214(208)	225(218)

DIST THR	6	5	4	3	2
ALT	1970	1650	1330	1010	700

GS	kt	80	100	120	140	160	180
Rate of descent FAF-MAPT 3° (5.2%)	ft/min	420	530	640	740	850	960

For data tabulation see verso

Changes: P5 withdrawn, R40 established, obstacle erected.

30 NOV 2023

<b>LIEPAJA (EVLA)</b>	<b>SBAS CH 45137 E06A</b>	<b>AERODROME ELEV 18 ft</b> HEIGHTS RELATED TO THR RWY 06 - ELEV <b>7 ft</b>	<b>INSTRUMENT APPROACH CHART – ICAO</b>
<b>RNP RWY 06</b>			

**TABULAR DESCRIPTION**

RNP RWY 06											
Serial Number	Path Descriptor	Waypoint Identifier	Fly-over	Course °M(°T)	Magnetic Variation	Distance (NM)	Turn Direction	Altitude (FT)	Speed (KT)	VPA (°) / TCH (FT)	Navigation Specification
010	IF	ZADFE	-	-	+9.0	-	-	+3000	-220	-	RNAV 1
020	TF	OMNEC	-	331(340.1)	+9.0	5.0	R	+2500	-210	-	RNAV 1
010	IF	GAVCE	-	-	+9.0	-	-	+3000/ -5000	-220	-	RNAV 1
020	TF	LA801	-	227(235.7)	+9.0	12.0		+3000	-220		RNAV 1
030	TF	OMNEC	-	151(160.0)	+9.0	5.0	L	+2500	-210	-	RNAV 1
010	IF	OMNEC	-	-	+9.0	-	-	+2500	-210	-	RNAV 1
010	IF	OMNEC	-	-	+9.0	-	-	+2500	-210	-	RNAV 1
020	TF	LA802	-	061(070.0)	+9.0	5.0	-	+2000	-	-	RNP APCH
030	TF	LA803	-	061(070.2)	+9.0	4.1	-	+700*	-	-	RNP APCH
040	TF	RW06	Y	061(070.3)	+9.0	2.0	-	@57	-	-3.0/50	RNP APCH
050	CF	LA804	Y	061(070.3)	+9.0	8.4	-	-	-220	-	RNP APCH
060	DF	GAVCE	-	-		-	L	+3000	-220	-	RNAV 1
* LNAV ONLY											
Serial Number	Path Descriptor	Waypoint Identifier	Fly-over	Course °M(°T)	Magnetic Variation	Time (min)	Turn Direction	MNM Altitude FT	MAX Altitude FT	MAX Speed KT	Navigation Specification
070	HM	GAVCE	Y	227(235.7)	+9.0	1	R	3000	5000	220	RNAV 1

**WAYPOINT LIST**

RNP RWY 06		
Waypoint Identifier	Coordinates	
ZADFE	56°22'25.28"N	020°49'08.09"E
OMNEC	56°27'06.65"N	020°46'03.98"E
LA802	56°28'48.54"N	020°54'32.38"E
GAVCE	56°38'34.60"N	021°00'55.90"E
LA801	56°31'47.94"N	020°42'59.09"E
LA803	56°30'11.32"N	021°01'28.13"E
RW06	56°30'52.18"N	021°04'54.24"E
LA804	56°33'41.53"N	021°19'14.96"E

**FAS DATA BLOCK**

**INPUT DATA**

Operation Type	0
SBAS Provider	1 (EGNOS)
Airport Identifier	EVLA
Runway	06
Runway Letter	0 (None)
Approach Performance Designator	0
Route Indicator	
Reference Path Data Selector	0
Reference Path Identifier	E06A
LTP/FTP Latitude	563052.1800N
LTP/FTP Longitude	0210454.2410E
LTP/FTP Ellipsoidal Height (metres)	25.9
FPAP Latitude	563113.9885N
Delta FPAP Latitude (seconds)	21.8085
FPAP Longitude	0210644.4755E
Delta FPAP Longitude (seconds)	110.2345
Threshold Crossing Height	15.0
TCH Units Selector	1 (meters)
Glidepath Angle (degrees)	3.00
Course Width (metres)	105.00
Length Offset (metres)	0
HAL (metres)	40.0
VAL (metres)	35.0

**OUTPUT DATA**

Data Block	10 01 0C 16 05 06 00 00 01 36 30 05 28 DE 40 18 C2 1B 0C 09 03 15 61 AA 00 35 5D 03 2C 81 2C 01 64 00 C8 AF 8A 17 93 37
Calculated CRC Value	8A179337

**REQUIRED ADDITIONAL DATA**

ICAO Code	EV
LTP/FTP Orthometric Height (metres)	2.1

EUROCONTROL FAS DB tool Version 3.2.0