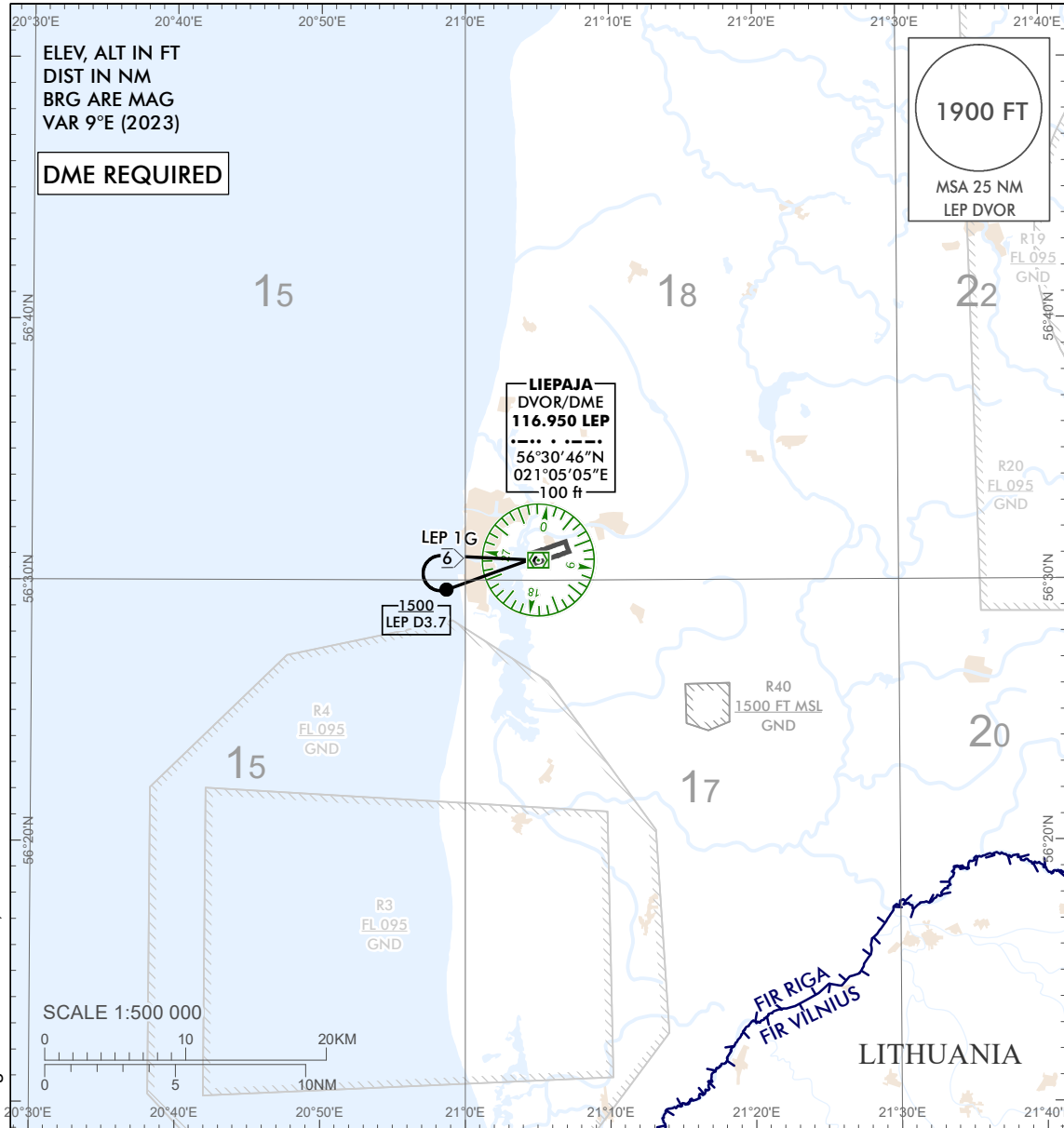


**STANDARD DEPARTURE CHART –
INSTRUMENT (SID) – ICAO**

TRANSITION ALTITUDE
5000 ft

AFIS 129.400

**LIEPAJA (EVLA)
RWY 24
(CAT A)**
LEP 1G



Coded designator	Plain language designator / Routing	Procedure Design Gradient (PDG) & Altitudes
LEP 1G	LIEPAJA ONE GOLF DEPARTURE Climb on runway track. At 3.7 DME LEP at or above 1500 FT turn right to LEP DVOR climbing to 2500 FT.	After TP required PDG 3.3% to 2500 FT.

Changes: P5 withdrawn, R40 established.

INTENTIONALLY LEFT BLANK