

**INSTRUMENT APPROACH CHART - ICAO**

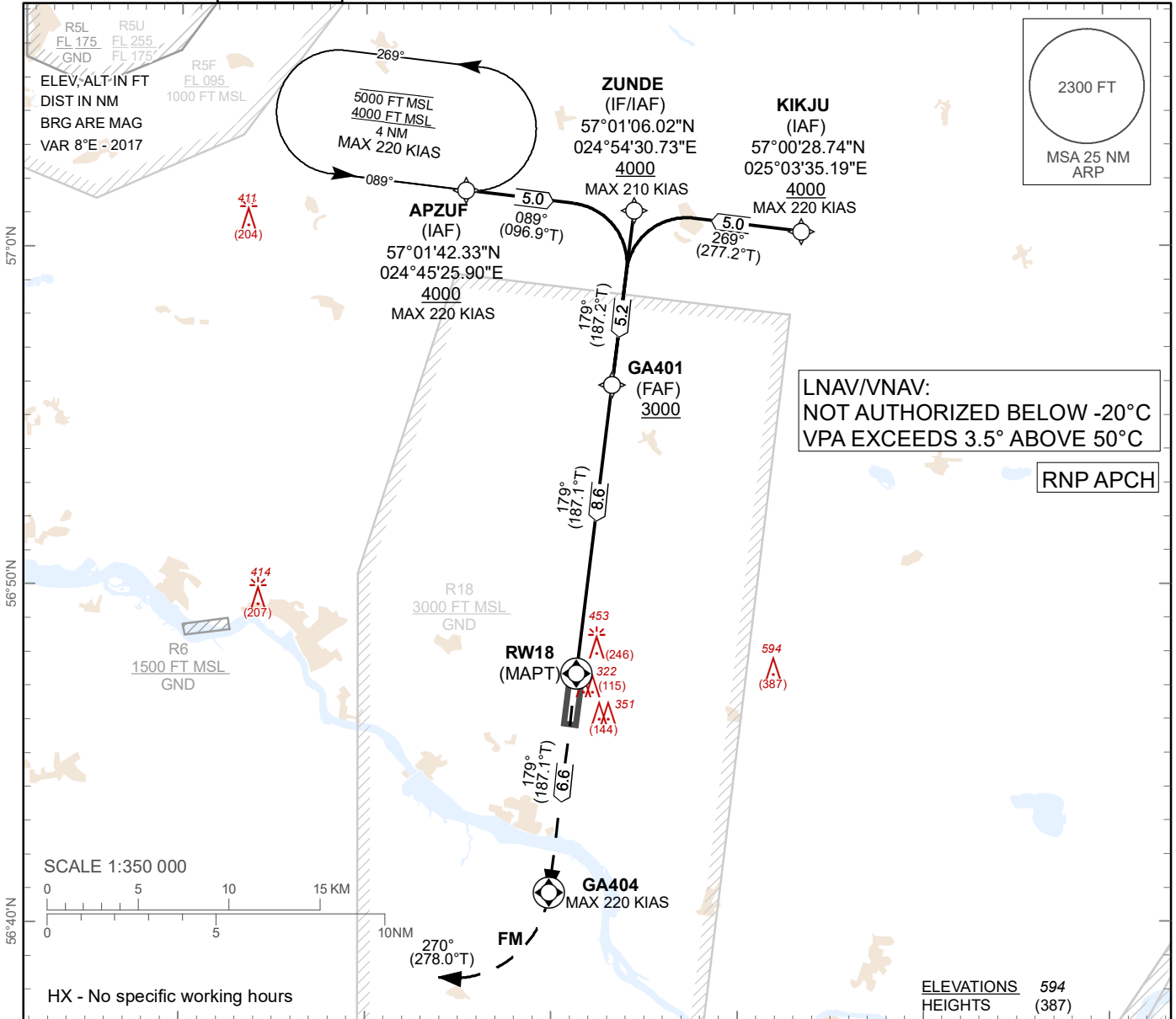
**SBAS CH 60297 E18A**

**AERODROME ELEV 207 ft**  
**HEIGHTS RELATED TO THR RWY 18 - ELEV 207 ft**

RIGA APP 129.925  
134.850 (HX)  
TWR 118.155  
ATIS 124.805

**LIELVARDE (MIL) (EVGA)**

**RNP RWY 18**



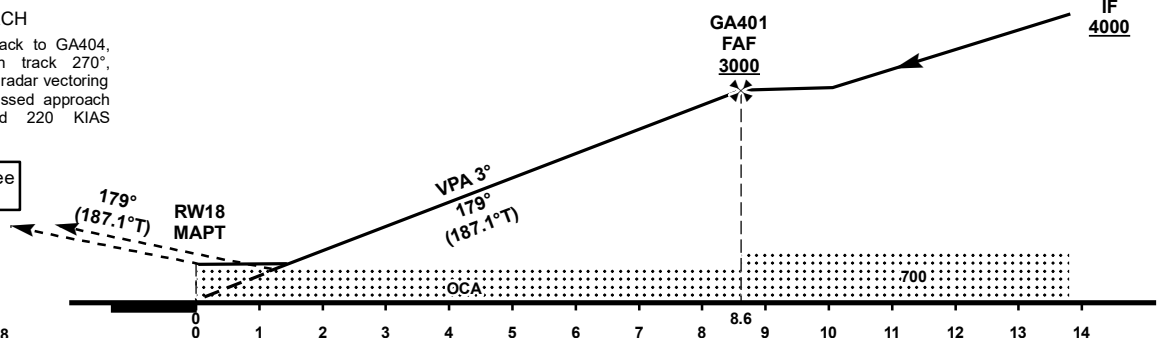
**TRANSITION ALT 5000 FT**

**MISSED APPROACH**  
Climb on runway track to GA404, then turn right on track 270°, climbing to 2500 FT, radar vectoring will be provided. Missed approach turn speed limited 220 KIAS maximum.

**COM FAILURE see EVGA AD 2.22**

**TCH 50**

**THR ELEV 207 FT**  
NM from THR RWY 18



OCA (H)		A	B	C	D
Straight-in Approach	LNAV	670 (460)			
	LNAV/VNAV	566 (359)	577 (370)	584 (377)	593 (386)
	LPV	453 (246)	465 (258)	473 (266)	483 (277)

DIST THR	8	7	6	5	4	3	2	1
ALT	2810	2490	2170	1850	1530	1210	900	580

GS	kt	80	100	120	140	160	180
Rate of descent	ft/min	420	530	640	740	850	960

Changes: obstacle updated.

For data tabulation see verso

<b>LIELVARDE (MIL) (EVGA)</b>	<b>SBAS CH 60297 E18A</b>	<b>AERODROME ELEV 207 ft</b> HEIGHTS RELATED TO THR RWY 18 - ELEV <b>207 ft</b>	<b>INSTRUMENT APPROACH CHART – ICAO</b>
<b>RNP RWY 18</b>			

**TABULAR DESCRIPTION**

RNP RWY 18											
Serial Number	Path Descriptor	Waypoint Identifier	Fly-over	Course °M(°T)	Magnetic Variation	Distance (NM)	Turn Direction	Altitude (FT)	Speed (KT)	VPA (°) / TCH (FT)	Navigation Specification
010	IF	APZUF	-	-	+8.0	-	-	+4000	-220	-	RNAV 1
020	TF	ZUNDE	-	089(096.9)	+8.0	5.0	R	+4000	-210	-	RNAV 1
010	IF	KIKJU	-	-	+8.0	-	-	+4000	-220	-	RNAV 1
020	TF	ZUNDE	-	269(277.2)	+8.0	5.0	L	+4000	-210	-	RNAV 1
010	IF	ZUNDE	-	-	+8.0	-	-	+4000	-210	-	RNAV 1
010	IF	ZUNDE	-	-	+8.0	-	-	+4000	-210	-	RNAV 1
020	TF	GA401	-	179(187.2)	+8.0	5.2	-	+3000	-	-	RNP APCH
030	TF	RW18	Y	179(187.1)	+8.0	8.6	-	@257	-	-3.0/50	RNP APCH
040	CF	GA404	Y	179(187.1)	+8.0	6.6	R	-	-220	-	RNP APCH
050	FM	-	-	270(278.0)	+8.0	-	-	@2500	-	-	-
Serial Number	Path Descriptor	Waypoint Identifier	Fly-over	Course °M(°T)	Magnetic Variation	Distance (NM)	Turn Direction	MIN Altitude FT	MAX Altitude FT	MAX Speed KT	Navigation Specification
060	HX	APZUF	Y	089(096.9)	+8.0	4	L	4000	5000	220	RNAV 1

**WAYPOINT LIST**

RNP RWY 18		
Waypoint Identifier	Coordinates	
APZUF	57°01'42.33" N	024°45'25.90" E
KIKJU	57°00'28.74" N	025°03'35.19" E
ZUNDE	57°01'06.02" N	024°54'30.73" E
GA401	56°55'56.90" N	024°53'19.77" E
RW18	56°47'24.66" N	024°51'23.06" E
GA404	56°40'54.79" N	024°49'54.80" E

**FAS DATA BLOCK**

**INPUT DATA**

Operation Type	0
SBAS Provider	1 (EGNOS)
Airport Identifier	EVGA
Runway	18
Runway Letter	0 (None)
Approach Performance Designator	0
Route Indicator	
Reference Path Data Selector	0
Reference Path Identifier	E18A
LTP/FTP Latitude	564724.6610N
LTP/FTP Longitude	0245123.0900E
LTP/FTP Ellipsoidal Height (metres)	84.3
FPAP Latitude	564603.2880N
Delta FPAP Latitude (seconds)	-81.3730
FPAP Longitude	0245104.6205E
Delta FPAP Longitude (seconds)	-18.4695
Threshold Crossing Height	15.2
TCH Units Selector	1 (meters)
Glidepath Angle (degrees)	3.00
Course Width (metres)	104.50
Length Offset (metres)	40
HAL (metres)	40.0
VAL (metres)	35.0

**OUTPUT DATA**

Data Block	10 01 07 16 05 12 00 00 01 38 31 05 EA 27 5F 18 A4 CE AA 0A 4B 17 46 84 FD B5 6F FF 30 81 2C 01 62 05 C8 AF 75 38 5B 4D
CRC Value	75385B4D

**REQUIRED ADDITIONAL DATA**

ICAO Code	EV
LTP/FTP Orthometric Height (metres)	63.0