

STANDARD ARRIVAL CHART - INSTRUMENT (STAR) - ICAO

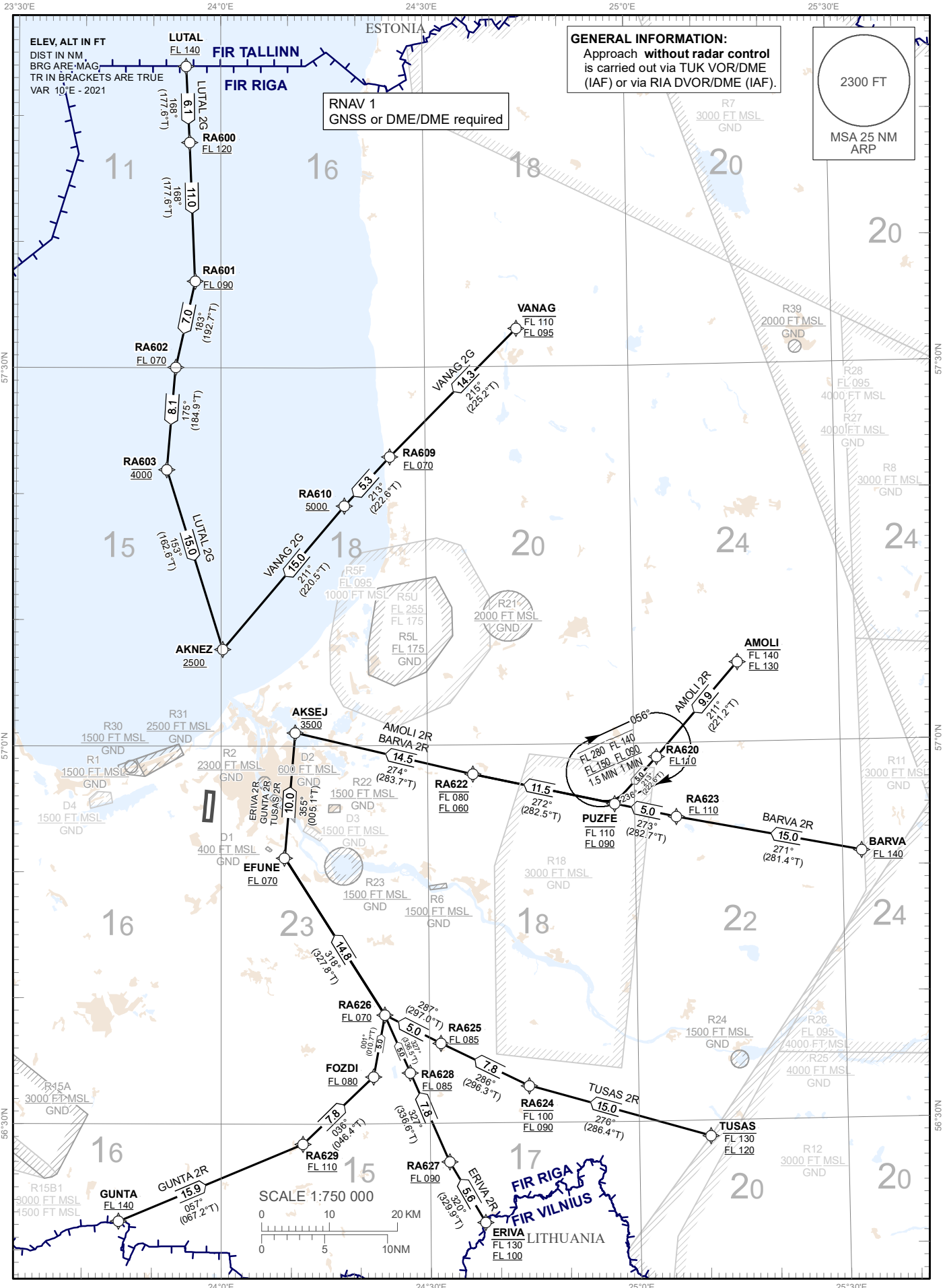
TRANSITION ALTITUDE 5000 FT

APP 129.925 TWR 134.850 (HX) ATIS 118.105 120.180

MAX IAS 250 kt BELOW FL100

RIGA (EVRA) RNAV RWY18 (direction EAST)

AMOLI 2R, BARVA 2R, ERIVA 2R, GUNTA 2R, LUTAL 2G, TUSAS 2R, VANAG 2G



Changes: P4 withdrawn, R39 established.

RNAV PROCEDURE CODING TABLES

AMOLI 2R										
Serial Number	Path Descriptor	Waypoint Identifier	Flyover	Course °M (°T)	Magnetic Variation (°)	Distance NM	Turn Direction	Altitude FT	Speed KT	Navigation Specification
10	IF	AMOLI	-	-	+10.0	-	-	+130 FL/-140 FL	-280	RNAV 1
20	TF	RA620	-	211 (221.2)	+10.0	9.9	L	+110 FL		RNAV 1
30	TF	PUZFE	-	213 (222.6)	+10.0	5.0	R	+090 FL/-110 FL	-250	RNAV 1
40	TF	RA622	-	272 (282.5)	+10.0	11.5	R	+060 FL/-080 FL	-230	RNAV 1
50	TF	AKSEJ	-	274 (283.7)	+10.0	14.5	R	@3500	-210	RNAV 1

BARVA 2R										
Serial Number	Path Descriptor	Waypoint Identifier	Flyover	Course °M (°T)	Magnetic Variation (°)	Distance NM	Turn Direction	Altitude FT	Speed KT	Navigation Specification
10	IF	BARVA	-	-	+10.0	-	-	+140 FL	-280	RNAV 1
20	TF	RA623	-	271 (281.4)	+10.0	15.0	R	+110 FL		RNAV 1
30	TF	PUZFE	-	273 (282.7)	+10.0	5.0	R	+090 FL/-110 FL	-250	RNAV 1
40	TF	RA622	-	272 (282.5)	+10.0	11.5	L	+060 FL/-080 FL	-230	RNAV 1
50	TF	AKSEJ	-	274 (283.7)	+10.0	14.5	R	@3500	-210	RNAV 1

ERIVA 2R										
Serial Number	Path Descriptor	Waypoint Identifier	Flyover	Course °M (°T)	Magnetic Variation (°)	Distance NM	Turn Direction	Altitude FT	Speed KT	Navigation Specification
10	IF	ERIVA	-	-	+10.0	-	-	+100 FL/-130 FL	-250	RNAV 1
20	TF	RA627	-	320 (329.9)	+10.0	5.6	R	+090 FL		RNAV 1
30	TF	RA628	-	327 (336.6)	+10.0	7.8	R	+085 FL		RNAV 1
40	TF	RA626	-	327 (336.5)	+10.0	5.0	L	+070 FL	-220	RNAV 1
50	TF	EFUNE	-	318 (327.8)	+10.0	14.8	L	+070 FL		RNAV 1
60	TF	AKSEJ	-	355 (005.1)	+10.0	10.0	R	@3500	-210	RNAV 1

GUNTA 2R										
Serial Number	Path Descriptor	Waypoint Identifier	Flyover	Course °M (°T)	Magnetic Variation (°)	Distance NM	Turn Direction	Altitude FT	Speed KT	Navigation Specification
10	IF	GUNTA	-	-	+10.0	-	-	+140 FL	-280	RNAV 1
20	TF	RA629	-	057 (067.2)	+10.0	15.9	R	+110 FL		RNAV 1
30	TF	FOZDI	-	036 (046.4)	+10.0	7.8	L	+080 FL	-230	RNAV 1
40	TF	RA626	-	001 (010.7)	+10.0	5.0	L	+070 FL	-220	RNAV 1
50	TF	EFUNE	-	318 (327.8)	+10.0	14.8	L	+070 FL		RNAV 1
60	TF	AKSEJ	-	355 (005.1)	+10.0	10.0	R	@3500	-210	RNAV 1

LUTAL 2G										
Serial Number	Path Descriptor	Waypoint Identifier	Flyover	Course °M (°T)	Magnetic Variation (°)	Distance NM	Turn Direction	Altitude FT	Speed KT	Navigation Specification
10	IF	LUTAL	-	-	+10.0	-	-	+140 FL	-280	RNAV 1
20	TF	RA600	-	168 (177.6)	+10.0	6.1	L	+120 FL		RNAV 1
30	TF	RA601	-	168 (177.6)	+10.0	11.0	L	+090 FL		RNAV 1
40	TF	RA602	-	183 (192.7)	+10.0	7.0	R	+070 FL		RNAV 1
50	TF	RA603	-	175 (184.9)	+10.0	8.1	L	@4000	-230	RNAV 1
60	TF	AKNEZ	-	153 (162.6)	+10.0	15.0	L	+2500	-210	RNAV 1

TUSAS 2R										
Serial Number	Path Descriptor	Waypoint Identifier	Flyover	Course °M (°T)	Magnetic Variation (°)	Distance NM	Turn Direction	Altitude FT	Speed KT	Navigation Specification
10	IF	TUSAS	-	-	+10.0	-	-	+120 FL/-130 FL	-250	RNAV 1
20	TF	RA624	-	276 (286.4)	+10.0	15.0	L	+090 FL/-100 FL	-240	RNAV 1
30	TF	RA625	-	286 (296.3)	+10.0	7.8	R	+085 FL		RNAV 1
40	TF	RA626	-	287 (297.0)	+10.0	5.0	R	+070 FL	-220	RNAV 1
50	TF	EFUNE	-	318 (327.8)	+10.0	14.8	R	+070 FL		RNAV 1
60	TF	AKSEJ	-	355 (005.1)	+10.0	10.0	R	@3500	-210	RNAV 1

VANAG 2G										
Serial Number	Path Descriptor	Waypoint Identifier	Flyover	Course °M (°T)	Magnetic Variation (°)	Distance NM	Turn Direction	Altitude FT	Speed KT	Navigation Specification
10	IF	VANAG	-	-	+10.0	-	-	+095 FL/-110 FL	-250	RNAV 1
20	TF	RA609	-	215 (225.2)	+10.0	14.3	L	+070 FL		RNAV 1
30	TF	RA610	-	213 (222.6)	+10.0	5.3	L	+5000	-230	RNAV 1
40	TF	AKNEZ	-	211 (220.5)	+10.0	15.0	L	+2500	-210	RNAV 1

WAYPOINT COORDINATES

WPT	COORD	
AKNEZ	570739.45N	0240018.12E
AKSEJ	570103.24N	0241050.30E
AMOLI	570621.00N	0251515.00E
BARVA	565114.00N	0253248.00E
EFUNE	565107.86N	0240912.70E
ERIVA	562208.00N	0243749.00E
FOZDI	563344.01N	0242155.30E
GUNTA	562217.00N	0234520.00E
LUTAL	575358.00N	0235453.00E
PUZFE	565513.53N	0245707.20E
TUSAS	562846.00N	0251018.00E
VANAG	573301.00N	0244333.00E

WPT	COORD	
RA600	574753.06N	0235521.40E
RA601	573653.33N	0235612.50E
RA602	573003.70N	0235321.00E
RA603	572158.62N	0235203.40E
RA609	572255.74N	0242446.60E
RA610	571901.53N	0241808.50E
RA620	565853.88N	0250318.00E
RA622	565740.71N	0243636.00E
RA623	565407.93N	0250601.20E
RA624	563256.90N	0244416.30E
RA625	563622.40N	0243140.20E
RA626	563838.19N	0242336.00E
RA627	562656.71N	0243246.70E
RA628	563403.62N	0242712.30E
RA629	562823.56N	0241145.20E

RNAV HOLDINGS

Waypoint Identifier	INBD °M (°T)	Turn Direction	MNM/MAX HDG	Speed KT	Time
PUZFE	236 (246.2)	R	+090FL/-140FL	-240	1 MIN
565513.53N 0245707.20E			+150FL/-280FL	-265	1.5 MIN