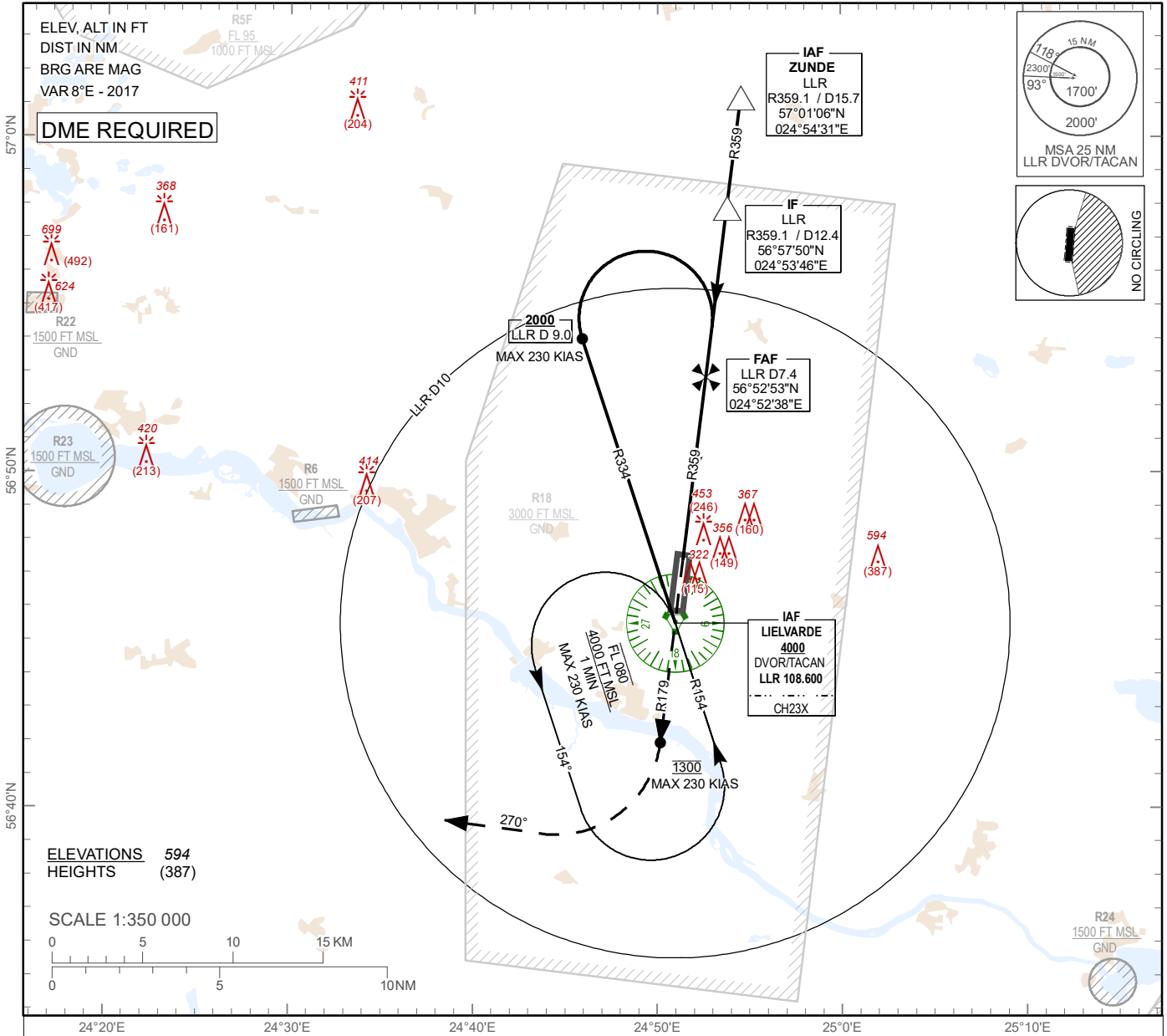


**INSTRUMENT
APPROACH
CHART - ICAO**

**AERODROME ELEV 207 ft
HEIGHTS RELATED TO
AD - ELEV 207 ft**

RIGA APP	129.925
	134.850 (HX)
TWR	118.155
ATIS	124.805

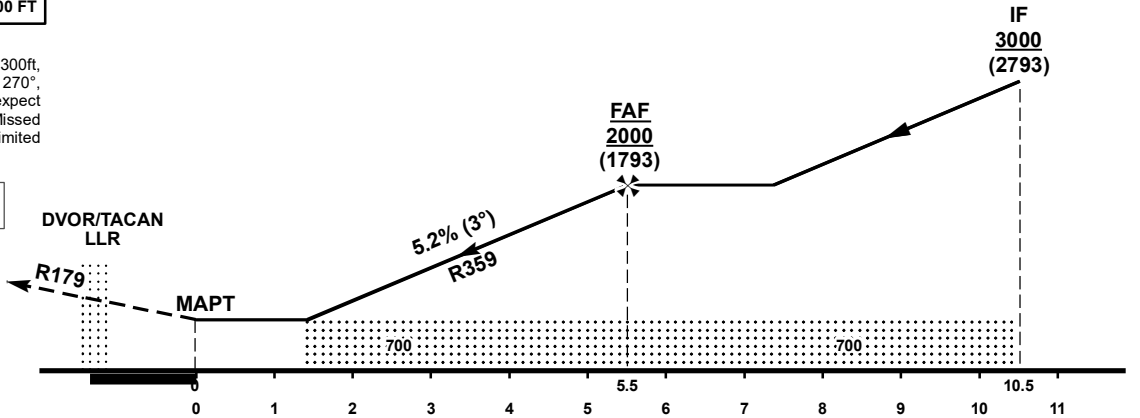
**LIELVARDE (MIL) (EVGA)
VORTAC RWY 18**



TRANSITION ALT 5000 FT

MISSED APPROACH
Climb on R179 to 1300ft, turn right on track 270°, climbing to 2500ft, expect radar vectoring. Missed approach turn speed limited 230 KIAS maximum.

COM FAILURE see EVGAAD 2.22



OCA (H)		A	B	C	D	E
Straight-in Approach	VORTAC	700 (500)				
Circling		750 (550)	850 (640)	900 (690)	1140(930)	

DIST LLR	6.9	5.9	4.9	3.9	2.9
DIST THR	5	4	3	2	1
ALT	1840	1520	1200	880	700
HGT	(1633)	(1313)	(993)	(673)	(493)

Timing not authorized for defining the MAPt

GS	kt	80	100	120	140	160	180
Rate of descent (5.2%)	ft/min	420	530	640	740	850	960
FAF-MAPT (5.5 NM)	min:sec	04:08	03:18	02:45	02:22	02:04	01:50

Changes: obstacles updated.

For data tabulation see verso

LIELVARDE (MIL) (EVGA)

AERONAUTICAL DATA TABULATION

INSTRUMENT
APPROACH
CHART - ICAO

VORTAC RWY 18

VORTAC approach to RWY 18 from LLR DVOR/TACAN, ZUNDE	
Fix/point	Coordinates
LLR DVOR/TACAN (IAF)	56°45'32.3"N 024°50'57.6"E
ZUNDE (IAF) LLR D15.72 LLR R359.09	57°01'06.0"N 024°54'30.7"E
LLR D12.42 LLR R359.09 (IF)	56°57'49.9"N 024°53'45.6"E
LLR D7.42 LLR R359.09 (FAF)	56°52'52.8"N 024°52'37.7"E
LLR D1.89 LLR R359.09 (MAPT)	56°47'24.7"N 024°51'23.1"E
THR RWY 18	56°47'24.66"N 024°51'23.06"E
Final approach descent angle is 2.98°	