

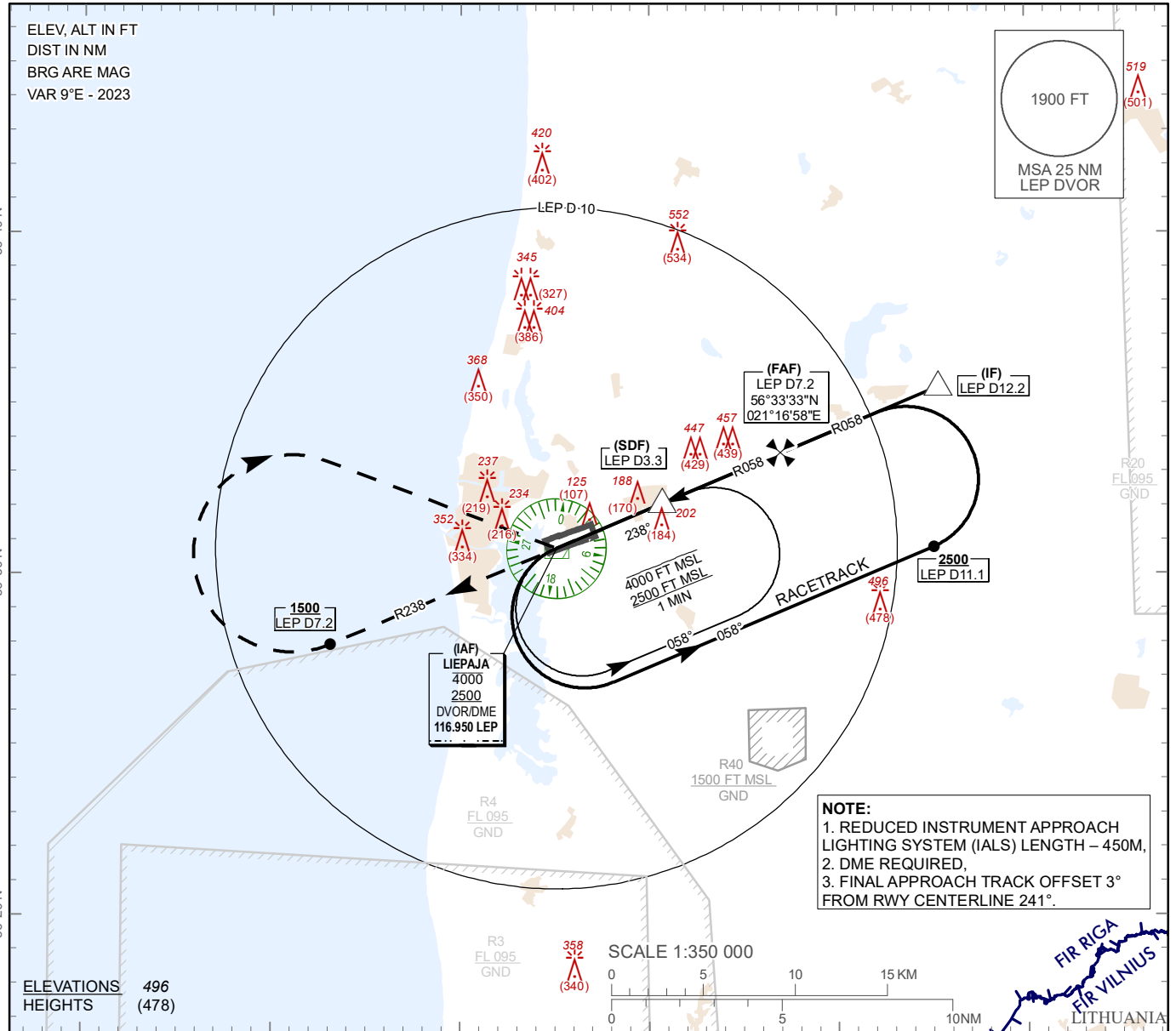
**INSTRUMENT  
APPROACH  
CHART - ICAO**

**AERODROME ELEV 18 ft**  
HEIGHTS RELATED TO  
AD ELEV 18 ft

AFIS 129.400

LIEPAJA (EVLA)

VOR Y RWY 24



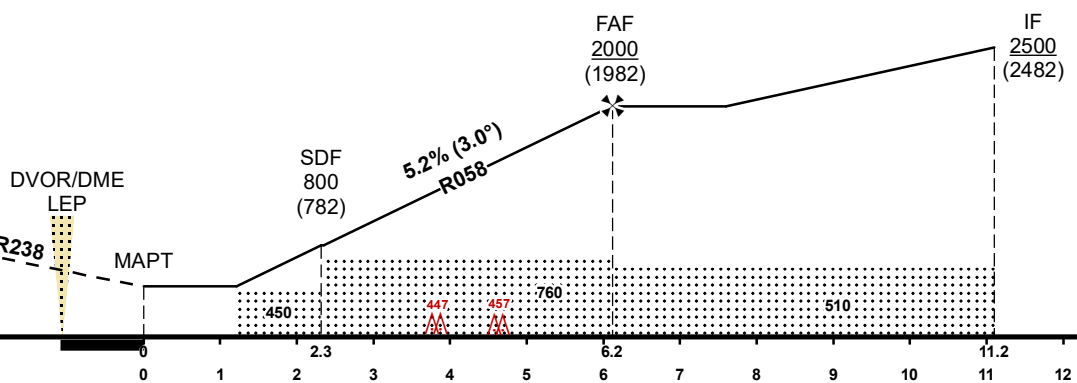
**TRANSITION ALT 5000 FT**

MISSED APPROACH  
Climb on R238 to 1500 FT or above, at D7.2 LEP DME turn RIGHT direct to LEP DVOR climbing to 2500 FT. Missed approach turn speed limited 220 KIAS maximum.

COM FAILURE see EVLAAD 2.22

THR ELEV 18 FT

NM from THR RWY 24



OCA (H)		A	B	C	D	DME LEP	7	6	5	4	3
Straight-in Approach	VOR	450(430)				DIST THR	6	5	4	3	2
						ALTITUDE	1960	1640	1330	1010	700
Circling		540 (520)		900 (890)		HEIGHT	(1942)	(1622)	(1312)	(992)	(682)

For data tabulation see verso

Changes: P5 withdrawn, R40 established, VSS obstacle removed, obstacle erected, editorial.

LIEPAJA (EVLA)

VOR Y RWY 24

## AERONAUTICAL DATA TABULATION

VOR approach to RWY 24 from LEP DVOR/DME	
Fix/point	Coordinates
LEP DVOR/DME (IAF)	56°30'46.0"N 021°05'05.1"E
LEP D12.15 (IF) R058.00	56°35'28.4"N 021°25'18.0"E
LEP D7.15 (FAF) R058.00	56°33'32.5"N 021°16'58.0"E
LEP D3.35 (SDF) R058.00	56°32'04.1"N 021°10'38.8"E
LEP D1.03 (MAPT) R058.00	56°31'10.0"N 021°06'47.3"E
THR RWY 24	56°31'13.99"N 021°06'44.48"E
Final approach descent angle is 2.98°	