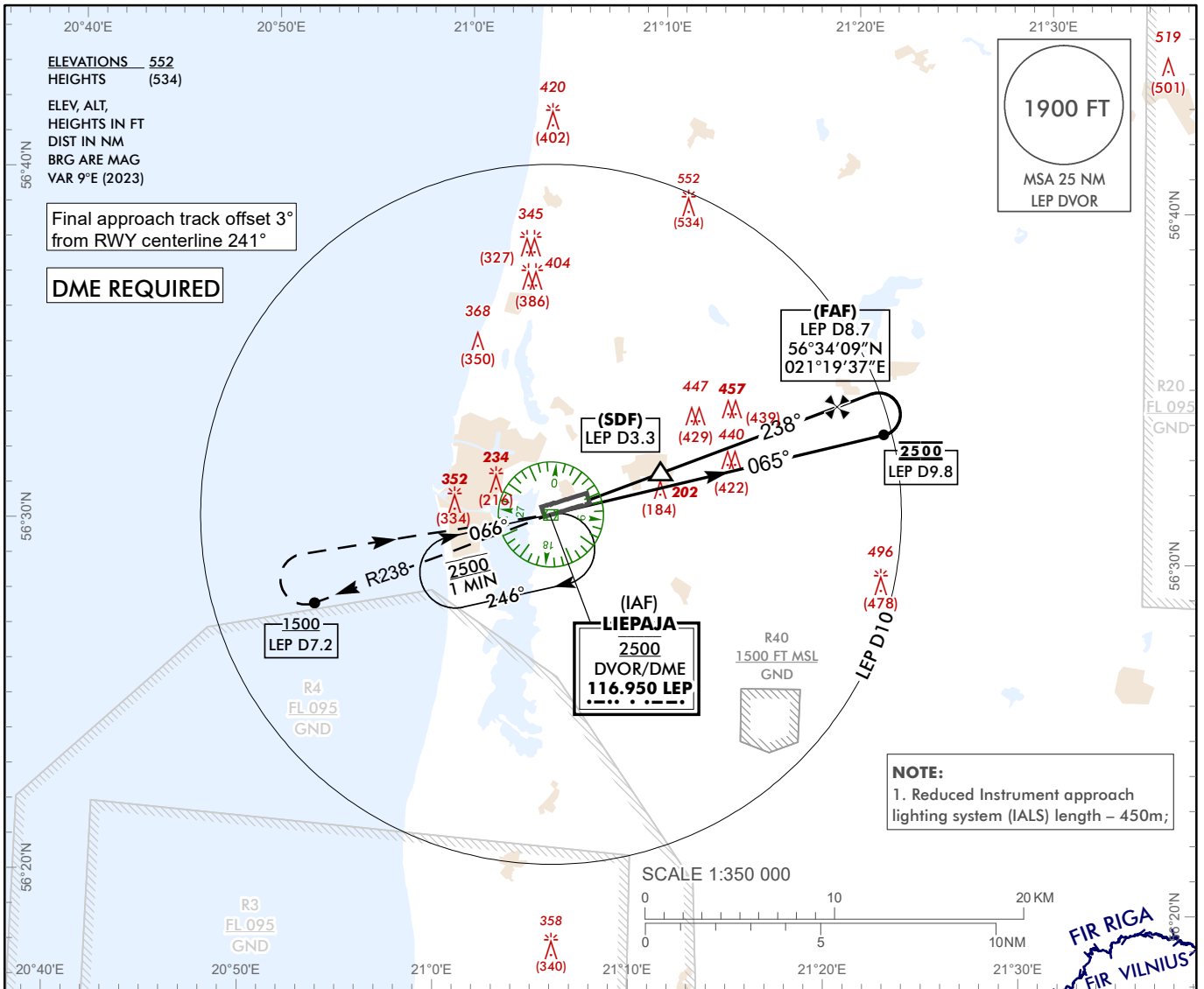


**INSTRUMENT
APPROACH
CHART – ICAO**

AERODROME ELEV 18 ft
HEIGHTS RELATED TO
AD - ELEV 18 ft

AFIS 129.400

**LIEPAJA (EVLA)
VOR Z RWY 24
(ACFT CAT A)**



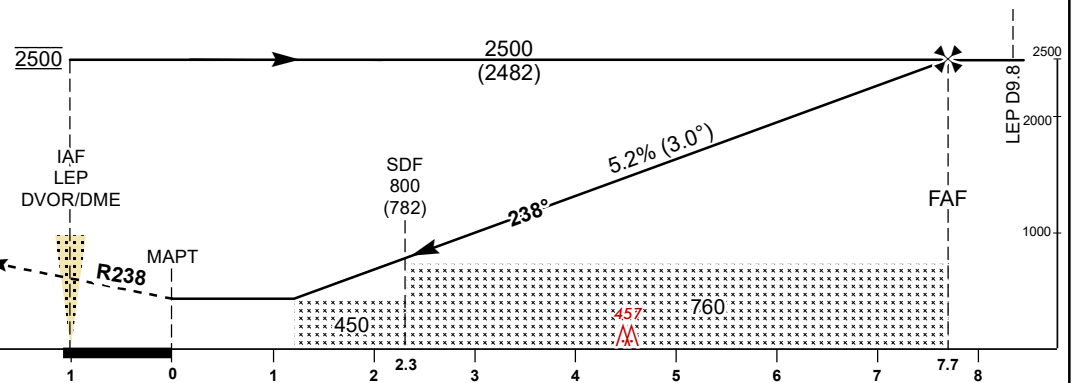
TRANSITION ALT 5000

MISSED APPROACH
Climb on R238 to 1500 or
above, at D7.2 LEP DME turn
RIGHT direct to LEP DVOR
climbing to 2500.

COM FAILURE see
EVLAAD 2.22

THR ELEV 18

NM from THR RWY 24



OCA (H)		A	B	C	D	DME LEP	8	7	6	5	4	3
Straight-in Approach	VOR/DME	450 (430)				ALTITUDE	2270	1960	1640	1320	1010	690
						HEIGHT	(2252)	(1942)	(1622)	(1302)	(992)	(672)
Circling		540 (520)				Timing not authorized for defining the MAPT						

For data tabulation see verso

Changes: P5 withdrawn, R40 established, VSS obstacle removed, obstacle erected, editorial.

LIEPAJA (EVLA)
VOR Z RWY 24
(ACFT CAT A)

AERONAUTICAL DATA TABULATION

VOR approach to RWY 24 from LEP DVOR/DME	
Fix/point	Coordinates
LEP DVOR/DME (IAF)	56°30'46.0"N 021°05'05.1"E
LEP D8.73 (FAF)	56°34'09.4"N 021°19'36.6"E
LEP D3.35 (SDF)	56°32'04.2"N 021°10'38.9"E
LEP D1.03 (MAPT)	56°31'10.0"N 021°06'47.3"E
THR RWY 24	56°31'13.99"N 021°06'44.48"E
Final approach descent angle is 2.98°	