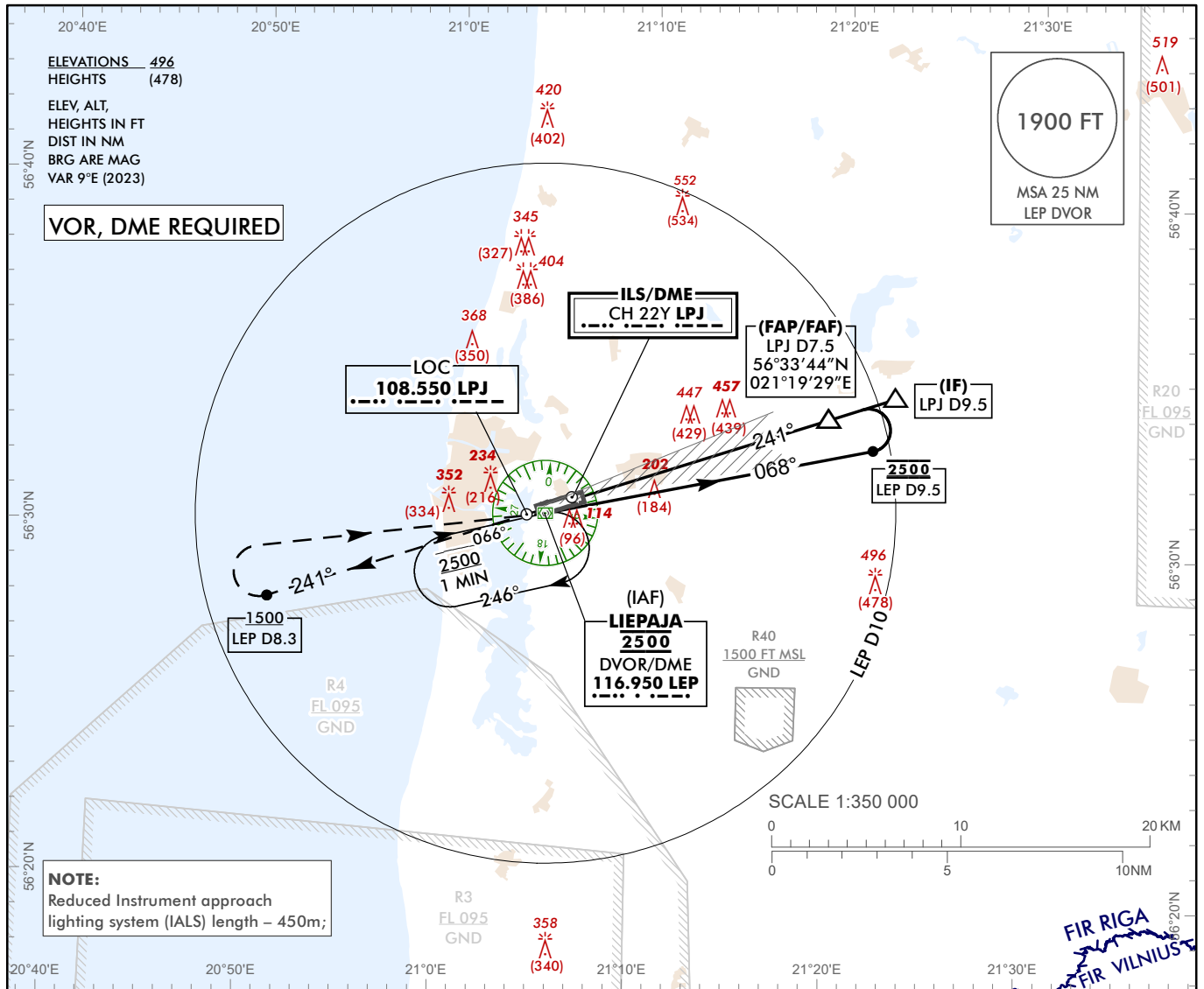


INSTRUMENT APPROACH CHART – ICAO

AERODROME ELEV 18 ft
 HEIGHTS RELATED TO THR RWY 24 - ELEV 18 ft

AFIS 129.400

LIEPAJA (EVLA)
ILS Z RWY 24
(ACFT CAT A)



TRANSITION ALT 5000

LPJ DME READING REFERS TO THR 24

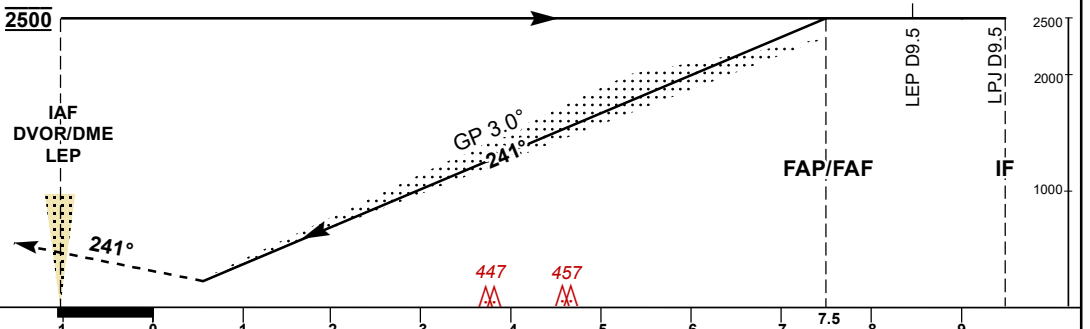
MISSED APPROACH
 Climb on track 241° to 1500 or above, at D8.3 LEP DME turn RIGHT direct to LEP DVOR climbing to 2500.

COM FAILURE see EVLAAD 2.22

ILS RDH 50

THR ELEV 18

NM from THR RWY 24



OCA (H)		A	B	C	D	DME LPJ	7	6	5	4	3	2	1
Straight-in Approach	ILS (Cat I)	244 (226)				DIST THR	7	6	5	4	3	2	1
						ALTITUDE	2340	2010	1680	1360	1030	710	390
Circling		540 (520)				HEIGHT	(2322)	(1992)	(1662)	(1342)	(1012)	(692)	(372)

For data tabulation see verso

Changes: P5 withdrawn, R40 established, obstacle erected.

LIEPAJA (EVLA)
ILS Z RWY 24
(ACFT CAT A)

AERONAUTICAL DATA TABULATION

ILS approach to RWY 24 from LEP DVOR/DME	
Fix/point	Coordinates
LEP DVOR/DME (IAF)	56°30'46.0"N 021°05'05.1"E
LPJ D9.48 (IF)	56°34'23.8"N 021°22'53.5"E
LPJ D7.48 (FAP/FAF)	56°33'43.9"N 021°19'29.1"E
THR RWY 24	56°31'13.99"N 021°06'44.48"E
LPJ LOC	56°30'43.3"N 021°04'10.0"E