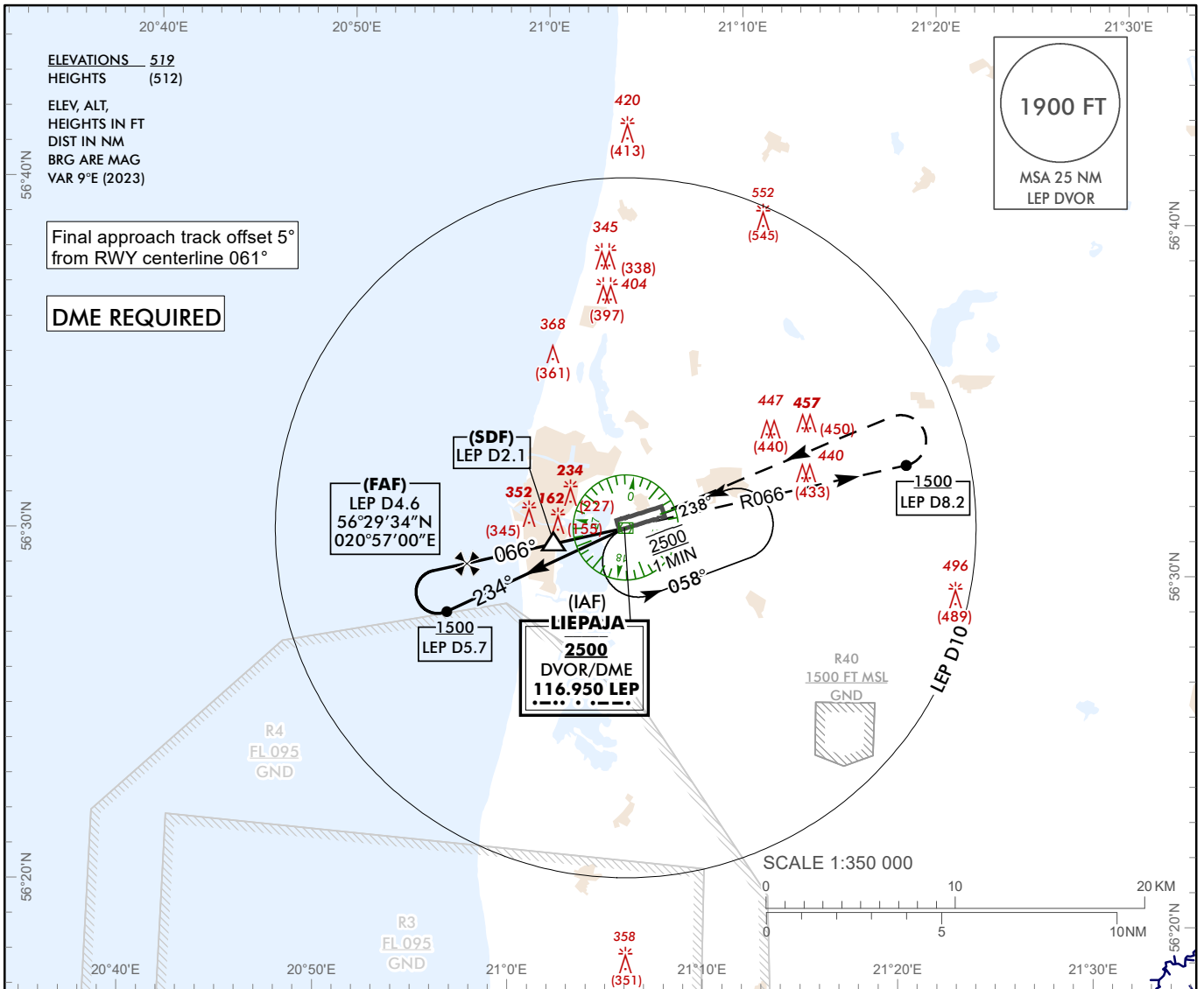


**INSTRUMENT  
APPROACH  
CHART – ICAO**

**AERODROME ELEV 18 ft**  
HEIGHTS RELATED TO  
THR RWY 06 - ELEV 7 ft

AFIS 129.400

**LIEPAJA (EVLA)  
VOR Z RWY 06  
(ACFT CAT A)**



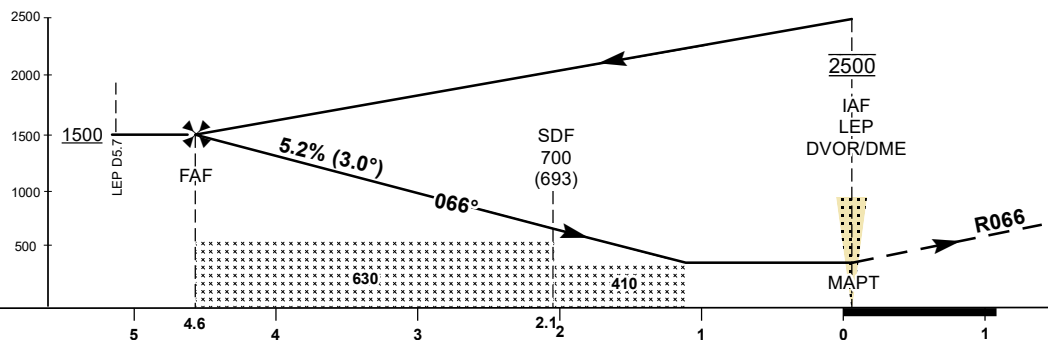
**TRANSITION ALT 5000**

**MISSED APPROACH**  
Climb on R066 to 1500 or  
above, at D8.2 LEP DME turn  
LEFT direct to LEP DVOR  
climbing to 2500.

COM FAILURE see  
EVLAAD 2.22

THR ELEV 7

NM from THR RWY 06



**OCA (H)**

A

B

C

D

DME LEP

4

3

2

Straight-in  
Approach

VOR/DME

410 (410)

ALTITUDE

1300

990

670

HEIGHT

(1293)

(983)

(663)

Circling

540 (520)

Timing not authorized for defining the MAPT

For data tabulation see verso

Changes: P5 withdrawn, R40 established, obstacle erected.

LIEPAJA (EVLA)  
VOR Z RWY 06  
(ACFT CAT A)

AERONAUTICAL DATA TABULATION

VOR approach to RWY 06 from LEP DVOR/DME (IAF)	
Fix/point	Coordinates
LEP DVOR/DME (IAF)	56°30'46.0"N 021°05'05.1"E
LEP D4.64 (FAF)	56°29'33.9"N 020°57'00.3"E
LEP D2.11 (SDF)	56°30'13.4"N 021°01'25.1"E
LEP DVOR/DME (MAPT)	56°30'46.0"N 021°05'05.1"E
THR RWY 06	56°30'52.18"N 021°04'54.24"E
Final approach descent angle is 2.98°	