

STANDARD DEPARTURE CHART - INSTRUMENT (SID) - ICAO

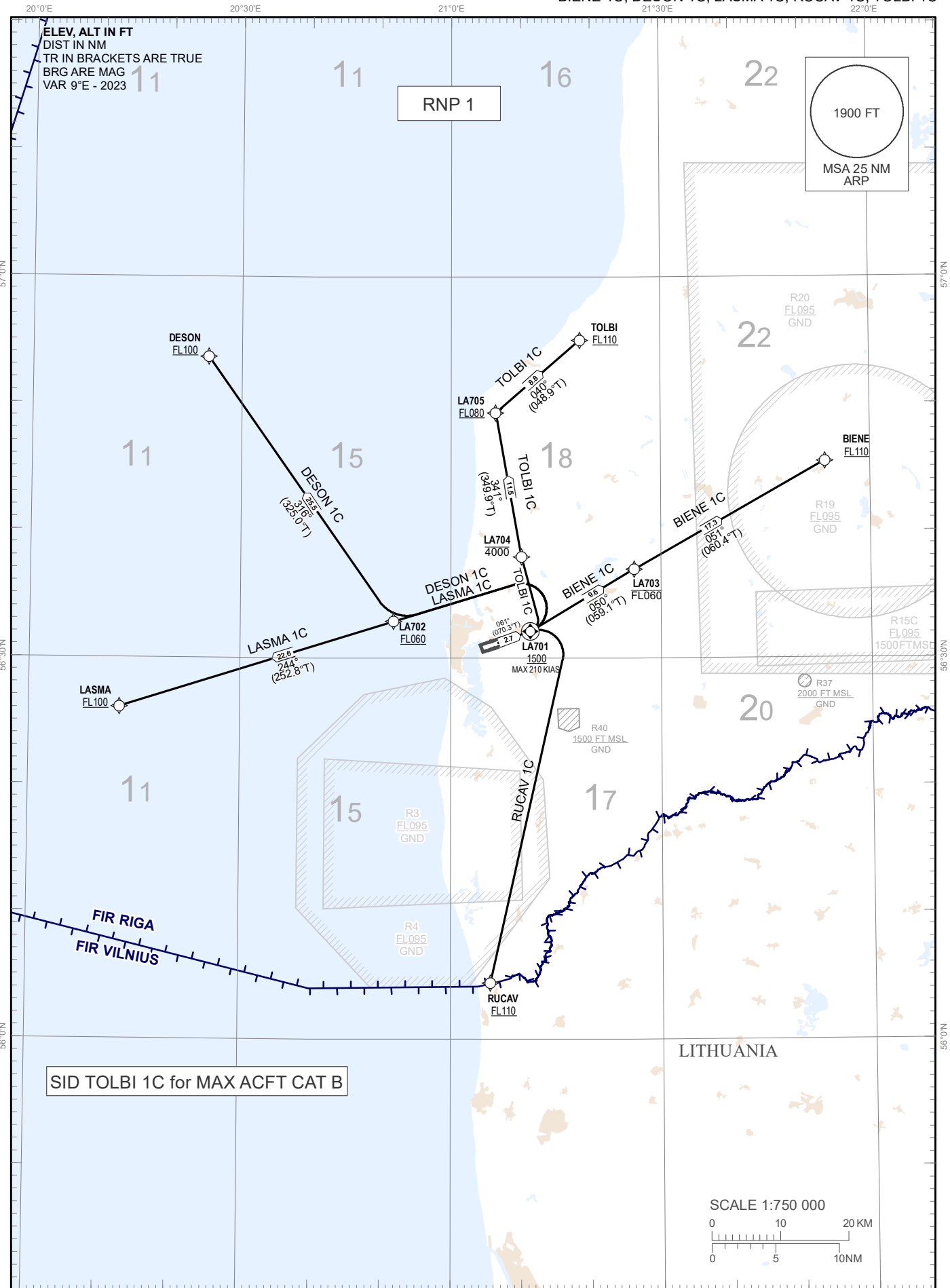
TRANSITION ALTITUDE 5000 FT

AFIS 129.400

LIEPAJA (EVLA) RNP RWY 06

MAX 250 KIAS BELOW FL100

BIENE 1C, DESON 1C, LASMA 1C, RUCAV 1C, TOLBI 1C



Changes: P2, P5 withdrawn, R37, R40 established.

SID TOLBI 1C for MAX ACFT CAT B

PROCEDURE CODING TABLES

BIENE 1C										
Serial Number	Path Descriptor	Waypoint Identifier	Flyover	Course °M (°T)	Magnetic Variation (°)	Distance NM	Turn Direction	Altitude FT	Speed KT	Navigation Specification
10	CF	LA701	Y	061(70.3)	+9.0	2.7	-	+1500	-210	RNP 1
20	TF	LA703	-	050(59.1)	+9.0	9.6	L	-060 FL	-	RNP 1
30	TF	BIENE	-	051(60.4)	+9.0	17.3	R	+110 FL	-	RNP 1

DESON 1C										
Serial Number	Path Descriptor	Waypoint Identifier	Flyover	Course °M (°T)	Magnetic Variation (°)	Distance NM	Turn Direction	Altitude FT	Speed KT	Navigation Specification
10	CF	LA701	Y	061(070.3)	+9.0	2.7	-	+1500	-210	RNP 1
20	DF	LA702	-	-	+9.0	-	L	+060 FL	-	RNP 1
30	TF	DESON	-	316(325)	+9.0	25.5	R	+100 FL	-	RNP 1

LASMA 1C										
Serial Number	Path Descriptor	Waypoint Identifier	Flyover	Course °M (°T)	Magnetic Variation (°)	Distance NM	Turn Direction	Altitude FT	Speed KT	Navigation Specification
10	CF	LA701	Y	061(070.3)	+9.0	2.7	-	+1500	-210	RNP 1
20	DF	LA702	-	-	+9.0	-	L	+060 FL	-	RNP 1
30	TF	LASMA	-	244(252.8)	+9.0	22.6	L	+100 FL	-	RNP 1

RUCAV 1C										
Serial Number	Path Descriptor	Waypoint Identifier	Flyover	Course °M (°T)	Magnetic Variation (°)	Distance NM	Turn Direction	Altitude FT	Speed KT	Navigation Specification
10	CF	LA701	Y	061(070.3)	+9.0	2.7	-	+1500	-210	RNP 1
20	DF	RUCAV	-	-	+9.0	-	R	+110 FL	-	RNP 1

TOLBI 1C										
Serial Number	Path Descriptor	Waypoint Identifier	Flyover	Course °M (°T)	Magnetic Variation (°)	Distance NM	Turn Direction	Altitude FT	Speed KT	Navigation Specification
10	CF	LA701	Y	061(070.3)	+9.0	2.7	-	+1500	-	RNP 1
20	DF	LA704	-	-	+9.0	-	L	-4000	-	RNP 1
30	TF	LA705	-	341(349.9)	+9.0	11.5	R	+080 FL	-	RNP 1
40	TF	TOLBI	-	040(048.9)	+9.0	8.8	R	+110 FL	-	RNP 1

WAYPOINT COORDINATES

WPT	COORD	
BIENE	56°45'30.32"N	021°53'32.04"E
DESON	56°53'41.00"N	020°25'13.00"E
LA701	56°32'08.42"N	021°11'20.04"E
LA702	56°32'54.20"N	020°51'49.87"E
LA703	56°37'01.05"N	021°26'10.64"E
LA704	56°38'01.17"N	021°10'04.81"E
LA705	56°49'19.70"N	021°06'24.91"E
LASMA	56°26'07.00"N	020°12'55.00"E
RUCAV	56°04'26.00"N	021°05'37.00"E
TOLBI	56°55'04.00"N	021°18'27.00"E