

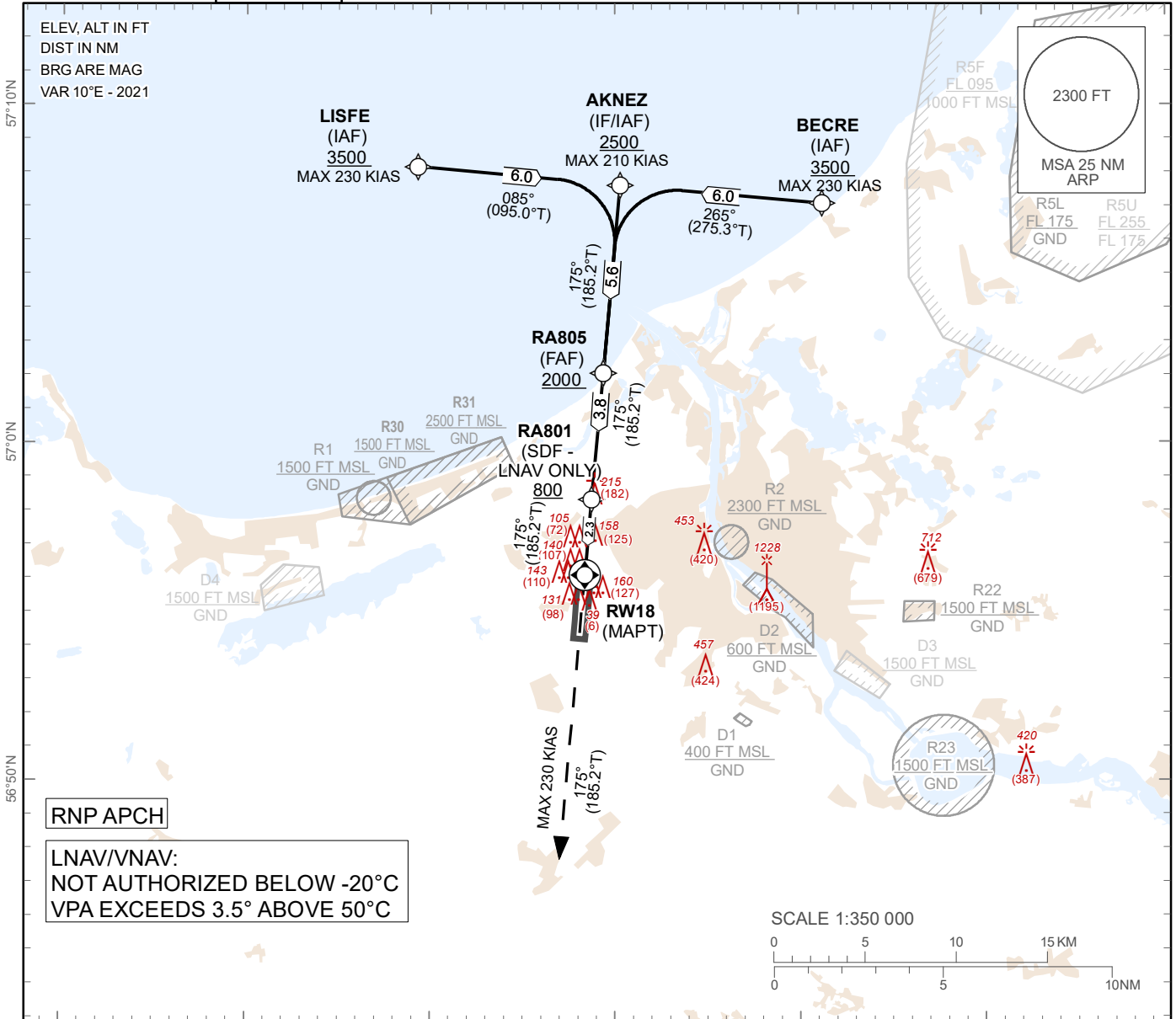
**INSTRUMENT  
APPROACH  
CHART - ICAO**

**SBAS  
CH 95829  
E18A**

**AERODROME ELEV 37 ft  
HEIGHTS RELATED TO  
THR RWY 18 - ELEV 33 ft**

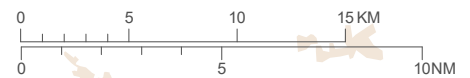
APP 129.925  
134.850 (HX)  
TWR 118.105  
ATIS 120.180

**RIGA (EVRA)  
RNP Y RWY18**



**LNAV/VNAV:  
NOT AUTHORIZED BELOW -20°C  
VPA EXCEEDS 3.5° ABOVE 50°C**

SCALE 1:350 000



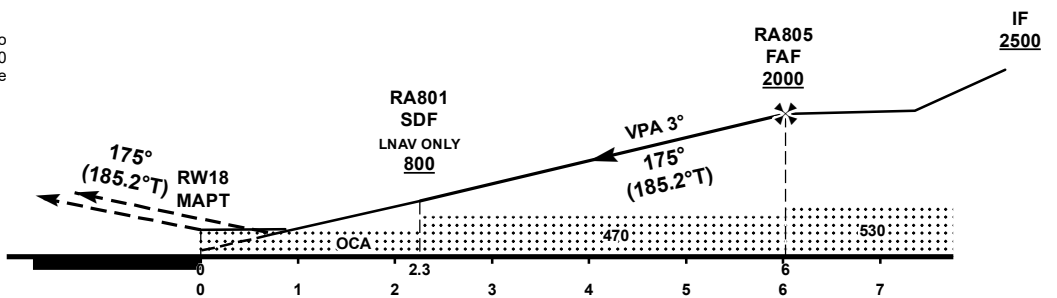
**TRANSITION ALT 5000 FT**

**MISSED APPROACH**  
Climb on runway track to 2500, after passing 1500 radar vectoring will be provided.

**COM FAILURE** see EVRA AD 2.22

**TCH 52**

**THR ELEV 33 FT**  
NM from THR RWY 18



DIST THR	5	4	3	2	1
ALT	1680	1360	1040	720	410

GS		kt	80	100	120	140	160	180
Rate of descent	ft/min	420	530	640	740	850	960	

For data tabulation see verso

Changes: obstacles updated.

<b>RIGA (EVRA)</b>	<b>SBAS CH 95829 E18A</b>	<b>AERODROME ELEV 37 ft</b> HEIGHTS RELATED TO THR RWY 18 - ELEV <b>33 ft</b>	<b>INSTRUMENT APPROACH CHART – ICAO</b>
<b>RNP Y RWY 18</b>			

**TABULAR DESCRIPTION**

**RNP Y RWY 18**

Serial Number	Path Descriptor	Waypoint Identifier	Fly-over	Course °M(°T)	Magnetic Variation	Distance (NM)	Turn Direction	Altitude (FT)	Speed (KT)	VPA (°) / TCH (FT)	Navigation Specification
010	IF	LISFE	-	-	+10.0	-	-	+3500	-230	-	RNAV 1
020	TF	AKNEZ	-	085(095.0)	+10.0	6.0	L	+2500	-210	-	RNAV 1
010	IF	BECRE	-	-	+10.0	-	-	+3500	-230	-	RNAV 1
020	TF	AKNEZ	-	265(275.3)	+10.0	6.0	R	+2500	-210	-	RNAV 1
010	IF	AKNEZ	-	-	+10.0	-	-	+2500	-210	-	RNAV 1
010	IF	AKNEZ	-	-	+10.0	-	-	+2500	-210	-	RNAV 1
020	TF	RA805	-	175(185.2)	+10.0	5.6	-	+2000	-	-	RNP APCH
030	TF	RA801	-	175(185.2)	+10.0	3.8	-	+800*	-	-	RNP APCH
040	TF	RW18	Y	175(185.2)	+10.0	2.3	-	@85	-	-3.0/52	RNP APCH
050	CA	-	-	175(185.2)	+10.0	-	-	+2500	-230	-	RNP APCH

\* LNAV ONLY

**WAYPOINT LIST**

RNP Y RWY 18		
Waypoint Identifier	Coordinates	
LISFE	57°08'11.43" N	023°49'20.15" E
BECRE	57°07'06.51" N	024°11'15.77" E
AKNEZ	57°07'39.45" N	024°00'18.12" E
RA805	57°02'05.64" N	023°59'22.60" E
RA801	56°58'20.81" N	023°58'45.33" E
RW18	56°56'06.25" N	023°58'23.08" E

**FAS DATA BLOCK**

**INPUT DATA**

Operation Type	0
SBAS Provider	1 (EGNOS)
Airport Identifier	EVRA
Runway	18
Runway Letter	0 (None)
Approach Performance Designator	0
Route Indicator	Y
Reference Path Data Selector	0
Reference Path Identifier	E18A
LTP/FTP Latitude	565606.2470N
LTP/FTP Longitude	0235823.1160E
LTP/FTP Ellipsoidal Height (metres)	30.6
FPAP Latitude	565414.1240N
Delta FPAP Latitude (seconds)	-112.1230
FPAP Longitude	0235804.6190E
Delta FPAP Longitude (seconds)	-18.4970
Threshold Crossing Height	16.0
TCH Units Selector	1 (metres)
Glidepath Angle (degrees)	3.00
Course Width (metres)	104.50
Length Offset (metres)	288
HAL (metres)	40.0
VAL (metres)	35.0

**OUTPUT DATA**

Data Block	10 01 12 16 05 12 C8 00 01 38 31 05 CE 12 6F 18 18 C3 49 0A 32 15 0A 94 FC 7E 6F FF 40 81 2C 01 62 24 C8 AF C4 57 E4 29
Calculated CRC Value	C457E429

**REQUIRED ADDITIONAL DATA**

ICAO Code	EV
LTP/FTP Orthometric Height (metres)	9.9

EUROCONTROL FAS DB tool Version 3.2.0