

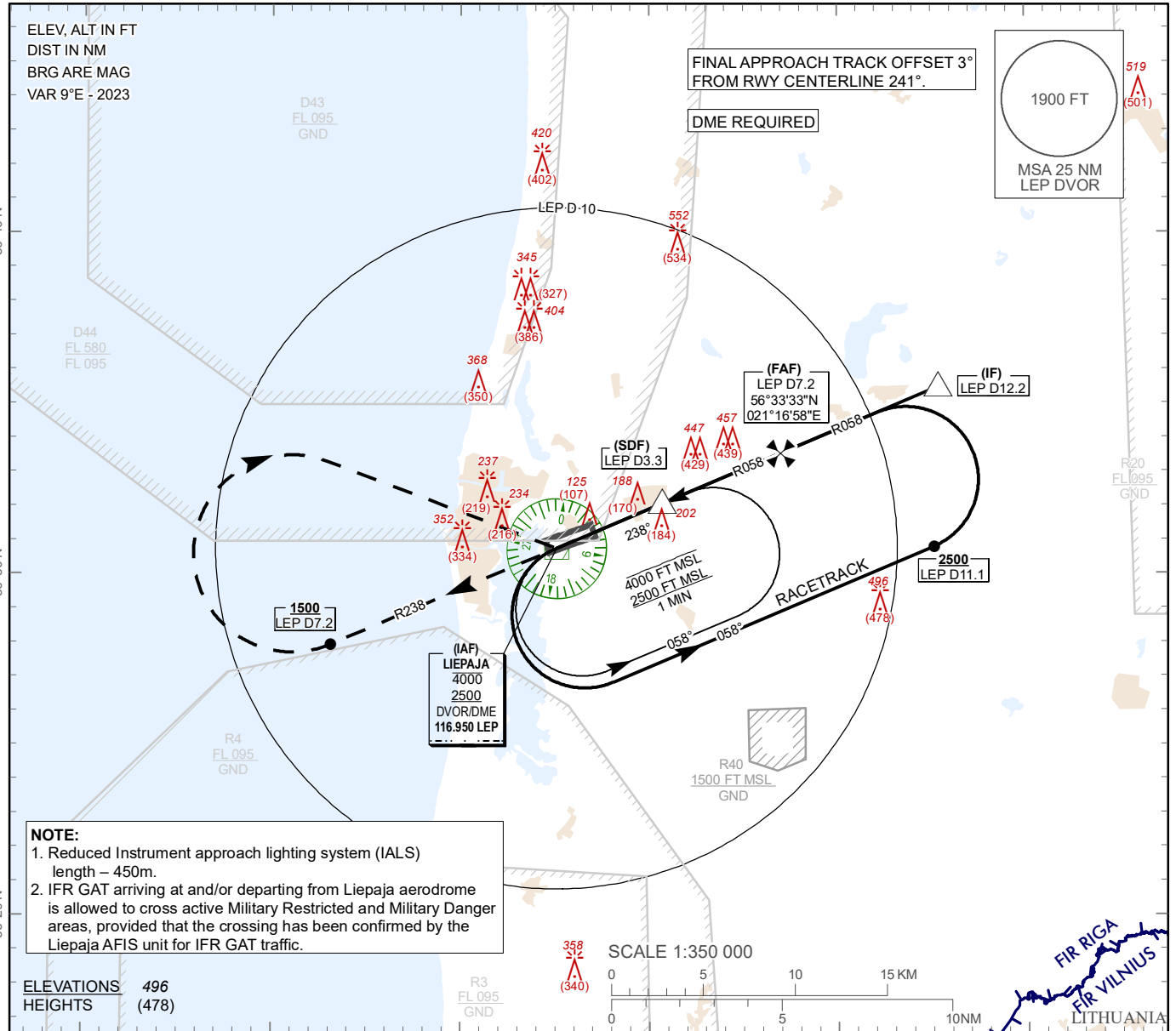
**INSTRUMENT APPROACH CHART - ICAO**

**AERODROME ELEV 18 ft**  
 HEIGHTS RELATED TO  
 AD ELEV 18 ft

AFIS 129.400

LIEPAJA (EVLA)

VOR Y RWY 24



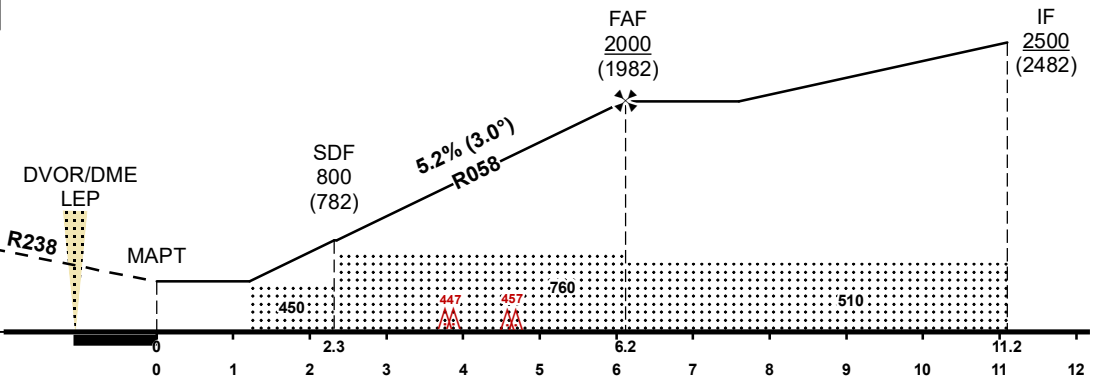
**TRANSITION ALT 5000 FT**

**MISSED APPROACH**  
 Climb on R238 to 1500 FT or above, at D7.2 LEP DME turn RIGHT direct to LEP DVOR climbing to 2500 FT. Missed approach turn speed limited 220 KIAS maximum.

**COM FAILURE** see EVLAAD 2.22

**THR ELEV 18 FT**

NM from THR RWY 24



<b>OCA (H)</b>		A	B	C	D	DME LEP	7	6	5	4	3
Straight-in Approach	VOR	450(430)				DIST THR	6	5	4	3	2
						ALTITUDE	1960	1640	1330	1010	700
Circling		540 (520)		900 (890)		HEIGHT	(1942)	(1622)	(1312)	(992)	(682)

For data tabulation see verso

Changes: D43 and D44 established, note added, editorial.

LIEPAJA (EVLA)

VOR Y RWY 24

## AERONAUTICAL DATA TABULATION

VOR approach to RWY 24 from LEP DVOR/DME	
Fix/point	Coordinates
LEP DVOR/DME (IAF)	56°30'46.0"N 021°05'05.1"E
LEP D12.15 (IF) R058.00	56°35'28.4"N 021°25'18.0"E
LEP D7.15 (FAF) R058.00	56°33'32.5"N 021°16'58.0"E
LEP D3.35 (SDF) R058.00	56°32'04.1"N 021°10'38.8"E
LEP D1.03 (MAPT) R058.00	56°31'10.0"N 021°06'47.3"E
THR RWY 24	56°31'13.99"N 021°06'44.48"E
Final approach descent angle is 2.98°	