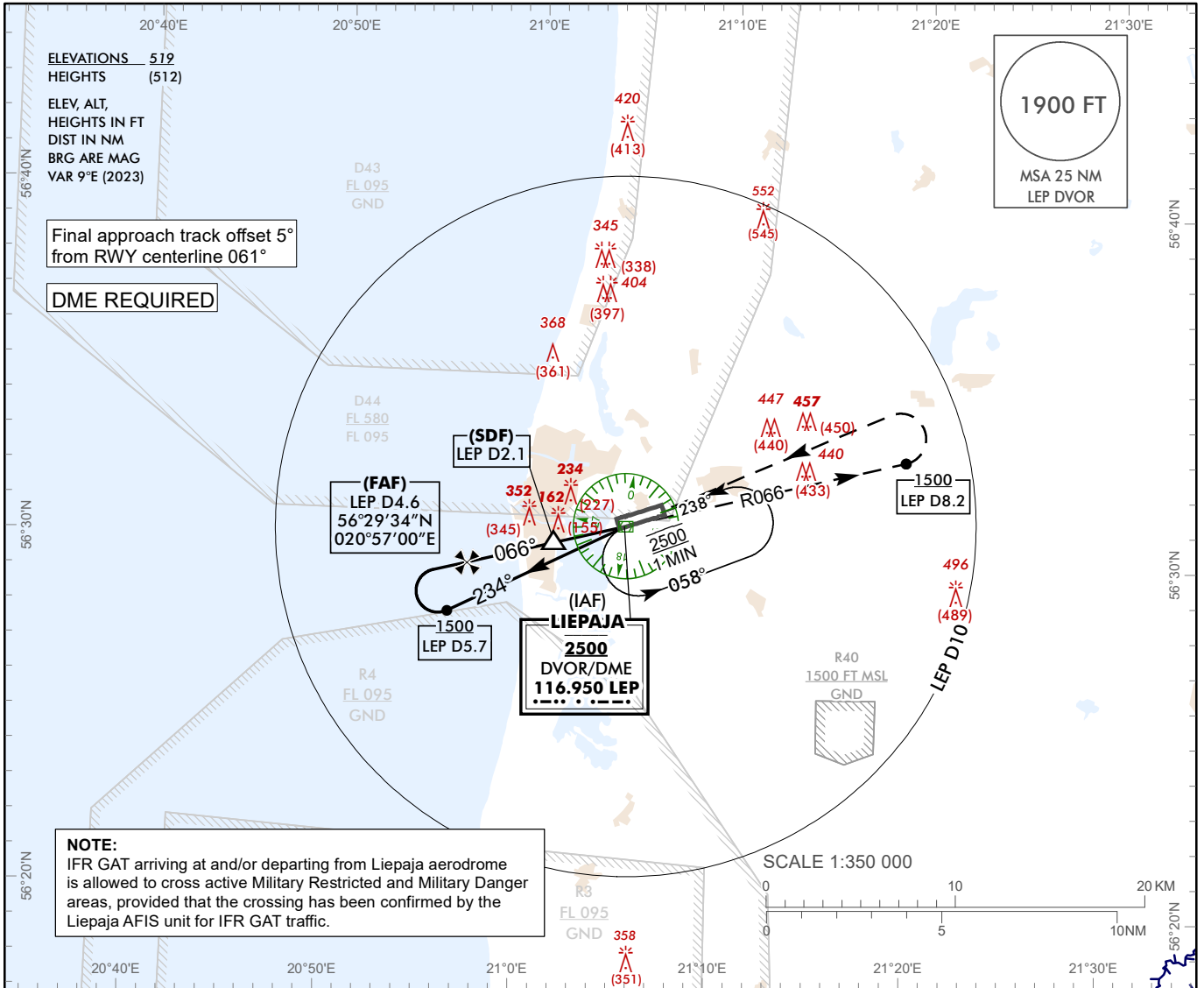


**INSTRUMENT APPROACH CHART – ICAO**

**AERODROME ELEV 18 ft**  
 HEIGHTS RELATED TO THR RWY 06 - ELEV 7 ft

AFIS 129.400

**LIEPAJA (EVLA)**  
**VOR Z RWY 06**  
**(ACFT CAT A)**



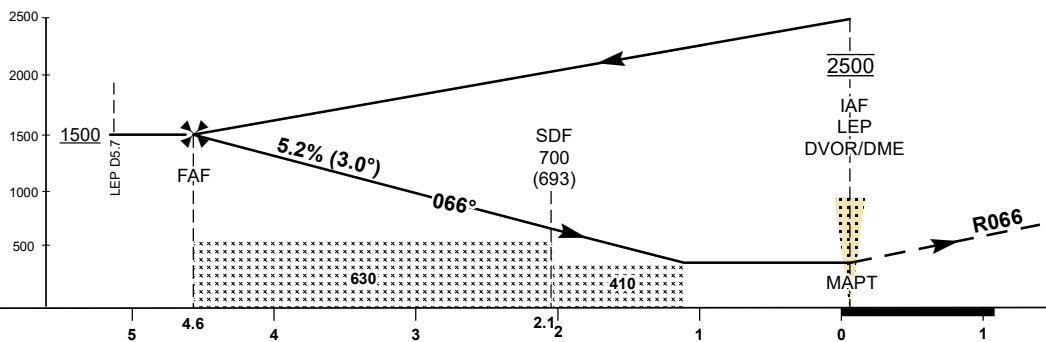
**TRANSITION ALT 5000**

**MISSED APPROACH**  
 Climb on R066 to 1500 or above, at D8.2 LEP DME turn LEFT direct to LEP DVOR climbing to 2500.

COM FAILURE see EVLAAD 2.22

THR ELEV 7

NM from THR RWY 06



OCA (H)		A	B	C	D	DME LEP	4	3	2
Straight-in Approach	VOR/DME	410 (410)				ALTITUDE	1300	990	670
						HEIGHT	(1293)	(983)	(663)
Circling		540 (520)				Timing not authorized for defining the MAPT			
For data tabulation see verso									

Changes: D43, D44 established, note added.

LIEPAJA (EVLA)  
VOR Z RWY 06  
(ACFT CAT A)

AERONAUTICAL DATA TABULATION

VOR approach to RWY 06 from LEP DVOR/DME (IAF)	
Fix/point	Coordinates
LEP DVOR/DME (IAF)	56°30'46.0"N 021°05'05.1"E
LEP D4.64 (FAF)	56°29'33.9"N 020°57'00.3"E
LEP D2.11 (SDF)	56°30'13.4"N 021°01'25.1"E
LEP DVOR/DME (MAPT)	56°30'46.0"N 021°05'05.1"E
THR RWY 06	56°30'52.18"N 021°04'54.24"E
Final approach descent angle is 2.98°	