

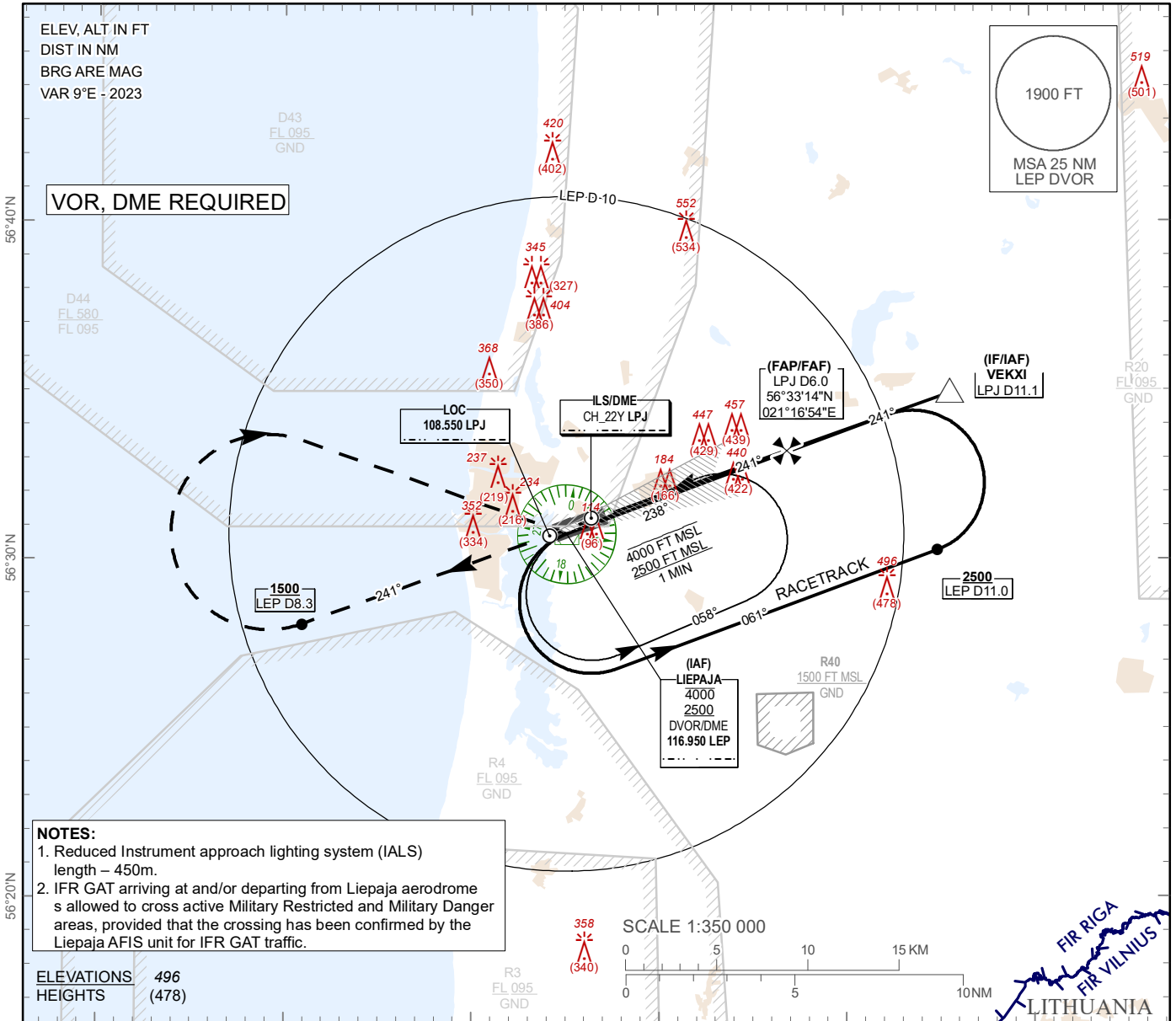
**INSTRUMENT  
APPROACH  
CHART - ICAO**

**AERODROME ELEV 18 ft**  
HEIGHTS RELATED TO  
THR RWY 24 - ELEV 18 ft

AFIS 129.400

LIEPAJA (EVLA)

ILS Y RWY 24



- NOTES:**
1. Reduced Instrument approach lighting system (IALS) length – 450m.
  2. IFR GAT arriving at and/or departing from Liepaja aerodrome s allowed to cross active Military Restricted and Military Danger areas, provided that the crossing has been confirmed by the Liepaja AFIS unit for IFR GAT traffic.

ELEVATIONS 496  
HEIGHTS (478)

SCALE 1:350 000

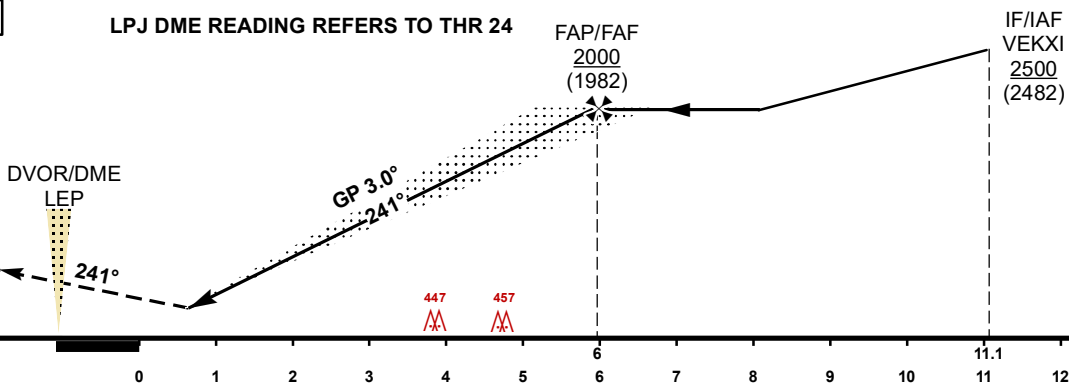
**TRANSITION ALT 5000 FT**

**MISSED APPROACH**  
Climb on runway track to 1500 or above, at D8.3 LEP  
DME turn RIGHT direct to LEP DVOR, climbing to 2500. Missed approach turn speed limited 220 KIAS maximum.

COM FAILURE see EVLAAD 2.22

**ILS RDH 50**

**THR ELEV 18 FT**  
NM from THR RWY 24



OCA (H)		A	B	C	D	DME LPJ	5	4	3	2	1
Straight-in Approach	ILS (CAT I)	244 (226)	256 (238)	264 (247)	275 (257)	DIST THR	5	4	3	2	1
						ALTITUDE	1690	1360	1040	710	390
Circling		540 (520)		900 (890)		HEIGHT	(1672)	(1342)	(1022)	(692)	(372)

Changes: D43 and D44 established, note added, editorial.

For data tabulation see verso

LIEPAJA (EVLA)

ILS Y RWY 24

AERONAUTICAL DATA TABULATION

ILS approach to RWY 24 from LEP DVOR/DME, VEKXI	
Fix/point	Coordinates
LEP DVOR/DME (IAF)	56°30'46.0"N 021°05'05.1"E
VEKXI (IF/IAF) LPJ D11.07	56°34'55.3"N 021°25'35.7"E
LPJ D5.96 (FAP/FAF)	56°33'13.6"N 021°16'53.8"E
THR RWY 24	56°31'13.99"N 021°06'44.48"E
LPJ LOC	56°30'43.3"N 021°04'09.9"E