

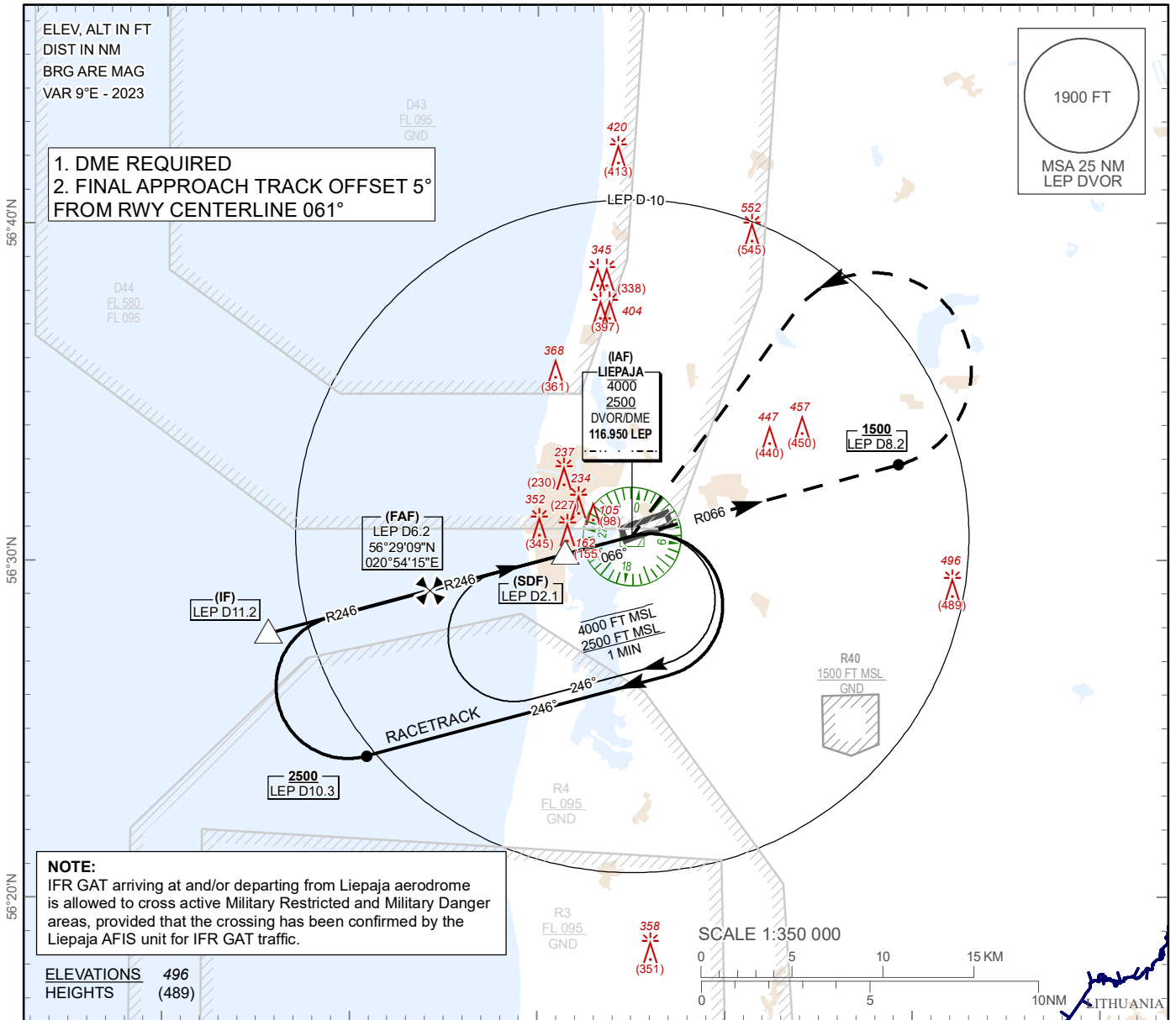
**INSTRUMENT
APPROACH
CHART - ICAO**

AERODROME ELEV 18 ft
HEIGHTS RELATED TO
THR RWY 06 - ELEV 7 ft

AFIS 129.400

LIEPAJA (EVLA)

VOR Y RWY 06



NOTE:
IFR GAT arriving at and/or departing from Liepaja aerodrome is allowed to cross active Military Restricted and Military Danger areas, provided that the crossing has been confirmed by the Liepaja AFIS unit for IFR GAT traffic.

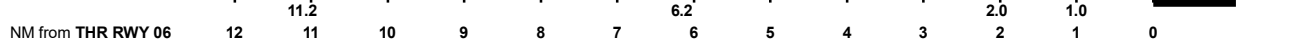
ELEVATIONS 496
HEIGHTS (489)

TRANSITION ALT 5000 FT

MISSED APPROACH
Climb on R066° to 1500 FT or above, at D8.2 LEP DME turn LEFT direct to LEP DVOR, climbing to 2500 FT. Missed approach turn speed limited 220 KIAS maximum.

COM FAILURE see EVLAAD 2.22

THR ELEV 7 FT



OCA (H)		A	B	C	D	DME LEP	6.1	5.1	4.1	3.1	2.1
Straight-in Approach	VOR	410(410)				DIST THR	6	5	4	3	2
						ALTITUDE	1970	1650	1330	1010	700
Circling		540 (520)		900 (890)		HEIGHT	(1963)	(1643)	(1323)	(1003)	(693)

For data tabulation see verso

Changes: D43 and D44 established, note added, editorial.

LIEPAJA (EVLA)

VOR Y RWY 06

AERONAUTICAL DATA TABULATION

VOR approach to RWY 06 from LEP DVOR/DME	
Fix/point	Coordinates
LEP DVOR/DME (IAF)	56°30'46.0"N 021°05'05.1"E
LEP D11.22 (IF) R246.00	56°27'50.7"N 020°45'33.4"E
LEP D6.23 (FAF) R246.00	56°29'09.2"N 020°54'15.3"E
LEP D2.11 (SDF) R246.00	56°30'13.4"N 021°01'25.2"E
LEP D1.07 (MAPT) R246.00	56°30'29.5"N 021°03'13.7"E
THR RWY 06	56°30'52.18"N 021°04'54.24"E
Final approach descent angle is 2.98°	