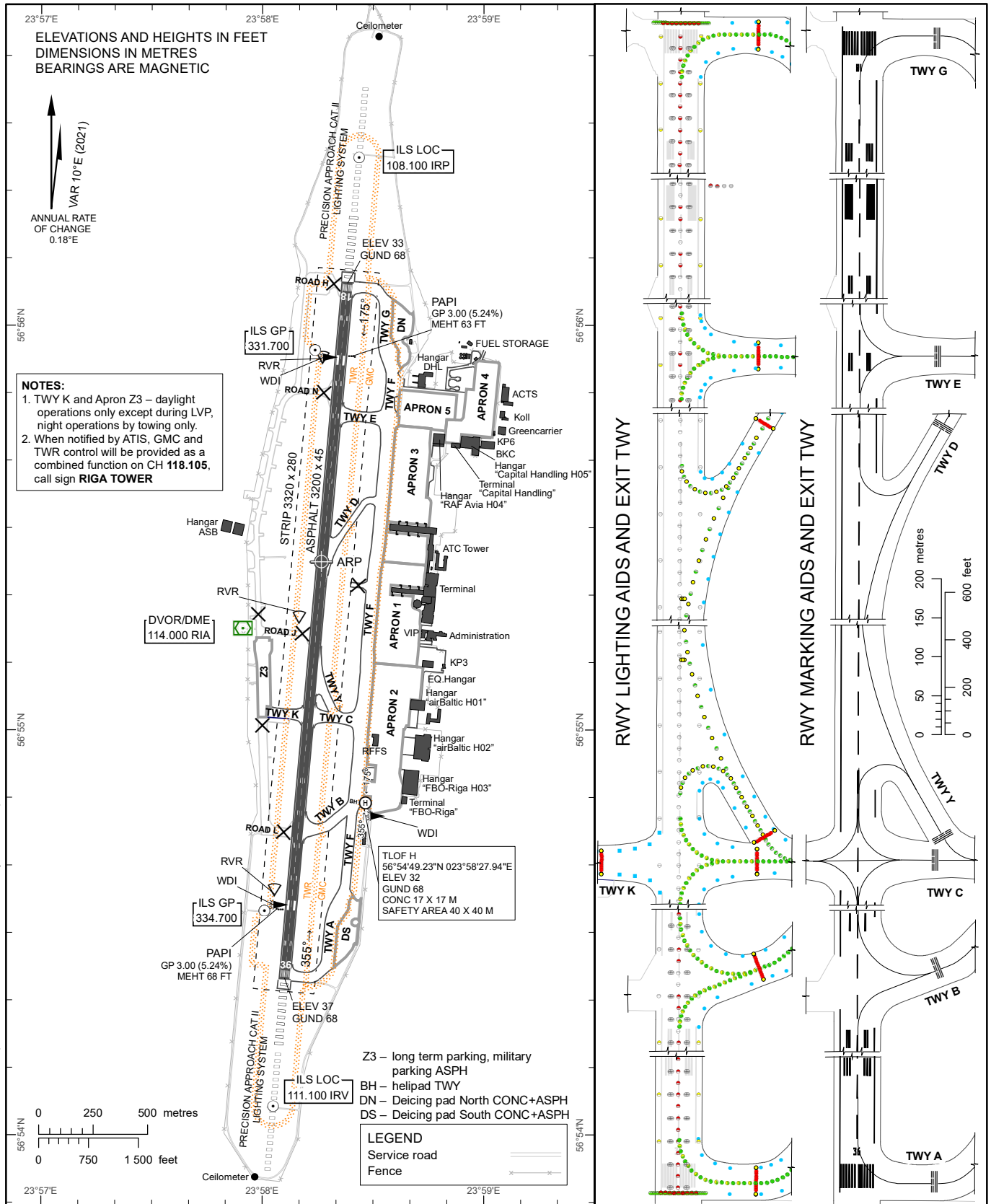


AERODROME CHART – ICAO 56°55'25"N 023°58'16"E ELEV 37 FT

TWR	118.105
GMC	118.805
APRON	131.605
ATIS	120.180

RIGA



Changes: helipad, TWY BH, WDI established, Apron 2, ATC service boundary, fence updated, editorial.

RWY	TRUE DIRECTION	THR	BEARING STRENGTH		
18	185.16°	56°56'06.25"N 023°58'23.08"E	RWY	ASPH	PCN 110/F/A/W/T
			TWY A, Y	ASPH	PCN 85/F/A/W/T
			TWY B	ASPH	PCN 93/R/C/W/T
			TWY BH	CONC+ASPH	PCN 100/R/C/W/T
36	005.15°	56°54'23.22"N 023°58'06.08"E	TWY C	ASPH	PCN 97/R/C/W/T
			TWY D	ASPH	PCN 88/F/C/W/T
			TWY E	ASPH	PCN 71/F/A/W/T
			TWY F	CONC+ASPH	PCN 77/F/A/W/T
			TWY G	ASPH	PCN 95/R/C/W/T
			TWY K	ASPH	PCN 120/R/C/W/T
			FATO 36	005.16°	56°54'48.75"N 023°58'27.86"E

Remarks:
1. APPROACH and RWY lighting see EVRA AD 2.14
2. RWY marking see EVRA AD 2.9
3. The rapid-exit TWY D is designed for code C (max. wingspan 36 m) or smaller ACFT.
4. The rapid-exit TWY Y when using RWY 36 is designed for code C (max. wingspan 36 m) or smaller ACFT.

INTENTIONALLY LEFT BLANK