

STANDARD DEPARTURE CHART - INSTRUMENT (SID) - ICAO

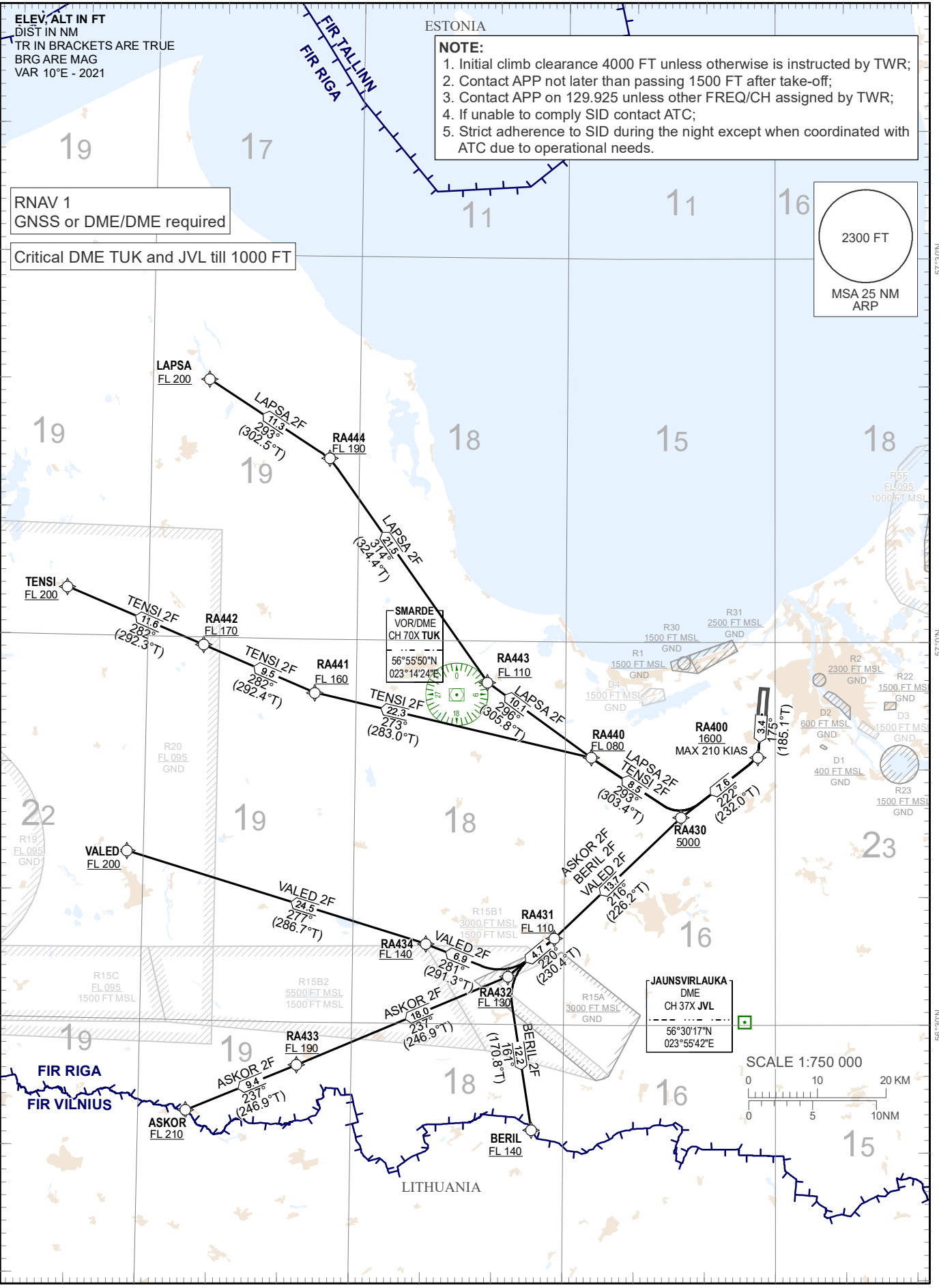
TRANSITION ALTITUDE
5000 FT

APP 129.925
TWR 134.850 (HX)
118.105
ATIS 120.180

RIGA (EVRA)
RNAV RWY 18
(direction WEST)

MAX IAS 250 kt BELOW FL 100

ASKOR 2F, BERIL 2F, LAPSA 2F, TENSI 2F, VALED 2F



Changes: Noise abatement areas withdrawn, R30, R31 established, chart identification and PBN box updated, editorial.

RNAV PROCEDURE CODING TABLES

ASKOR 2F

Serial Number	Path Descriptor	Waypoint Identifier	Fly - over	Course °M(°T)	Magnetic Variation(°)	Distance NM	Turn Direction	Altitude FT	Speed KT	Navigation Specification
10	CF	RA400	-	175(185.1)	+10.0	3.4	-	+1600	-210	RNAV 1
20	TF	RA430	-	222(232.0)	+10.0	7.6	R	+5000		RNAV 1
30	TF	RA431	-	216(226.2)	+10.0	13.7	L	+110 FL		RNAV 1
40	TF	RA432	-	220(230.4)	+10.0	4.7	-	+130 FL		RNAV 1
50	TF	RA433	-	237(246.9)	+10.0	18.0	R	+190 FL		RNAV 1
60	TF	ASKOR	-	237(246.9)	+10.0	9.4	-	+210 FL		RNAV 1

BERIL 2F

Serial Number	Path Descriptor	Waypoint Identifier	Fly - over	Course °M(°T)	Magnetic Variation(°)	Distance NM	Turn Direction	Altitude FT	Speed KT	Navigation Specification
10	CF	RA400	-	175(185.1)	+10.0	3.4	-	+1600	-210	RNAV 1
20	TF	RA430	-	222(232.0)	+10.0	7.6	R	+5000		RNAV 1
30	TF	RA431	-	216(226.2)	+10.0	13.7	L	+110 FL		RNAV 1
40	TF	RA432	-	220(230.4)	+10.0	4.7	-	+130 FL		RNAV 1
50	TF	BERIL	-	161(170.8)	+10.0	12.2	L	+140 FL		RNAV 1

LAPSA 2F

Serial Number	Path Descriptor	Waypoint Identifier	Fly - over	Course °M(°T)	Magnetic Variation(°)	Distance NM	Turn Direction	Altitude FT	Speed KT	Navigation Specification
10	CF	RA400	-	175(185.1)	+10.0	3.4	-	+1600	-210	RNAV 1
20	TF	RA430	-	222(232.0)	+10.0	7.6	R	+5000		RNAV 1
30	TF	RA440	-	293(303.4)	+10.0	8.5	R	+080 FL		RNAV 1
40	TF	RA443	-	296(305.8)	+10.0	10.1	-	+110 FL		RNAV 1
50	TF	RA444	-	314(324.4)	+10.0	21.5	R	+190 FL		RNAV 1
60	TF	LAPSA	-	293(302.5)	+10.0	11.3	L	+200 FL		RNAV 1

TENSI 2F

Serial Number	Path Descriptor	Waypoint Identifier	Fly - over	Course °M(°T)	Magnetic Variation(°)	Distance NM	Turn Direction	Altitude FT	Speed KT	Navigation Specification
10	CF	RA400	-	175(185.1)	+10.0	3.4	-	+1600	-210	RNAV 1
20	TF	RA430	-	222(232.0)	+10.0	7.6	R	+5000		RNAV 1
30	TF	RA440	-	293(303.4)	+10.0	8.5	R	+080 FL		RNAV 1
40	TF	RA441	-	273(283.0)	+10.0	22.3	L	+160 FL		RNAV 1
50	TF	RA442	-	282(292.4)	+10.0	9.5	R	+170 FL		RNAV 1
60	TF	TENSI	-	282(292.3)	+10.0	11.6	-	+200 FL		RNAV 1

VALED 2F

Serial Number	Path Descriptor	Waypoint Identifier	Fly - over	Course °M(°T)	Magnetic Variation(°)	Distance NM	Turn Direction	Altitude FT	Speed KT	Navigation Specification
10	CF	RA400	-	175(185.1)	+10.0	3.4	-	+1600	-210	RNAV 1
20	TF	RA430	-	222(232.0)	+10.0	7.6	R	+5000		RNAV 1
30	TF	RA431	-	216(226.2)	+10.0	13.7	L	+110 FL		RNAV 1
40	TF	RA432	-	220(230.4)	+10.0	4.7	-	+130 FL		RNAV 1
50	TF	RA434	-	281(291.3)	+10.0	6.9	R	+140 FL		RNAV 1
60	TF	VALED	-	277(286.7)	+10.0	24.5	-	+200 FL		RNAV 1

WAYPOINT COORDINATES

WPT	COORD	
ASKOR	562258.00N	0223646.00E
BERIL	562147.00N	0232535.00E
LAPSA	572013.00N	0223813.00E
TENSI	570347.00N	0221820.00E
VALED	564311.00N	0222743.00E
RA400	565100.48N	0235732.73E
RA430	564618.11N	0234635.40E
RA431	563647.18N	0232839.60E
RA432	563346.37N	0232204.40E
RA433	562639.86N	0225217.30E
RA434	563616.19N	0231023.50E
RA440	565056.42N	0233343.20E
RA441	565549.85N	0225403.50E
RA442	565924.44N	0223803.50E
RA443	565647.79N	0231848.00E
RA444	571411.05N	0225546.50E