

STANDARD ARRIVAL CHART - INSTRUMENT (STAR) - ICAO

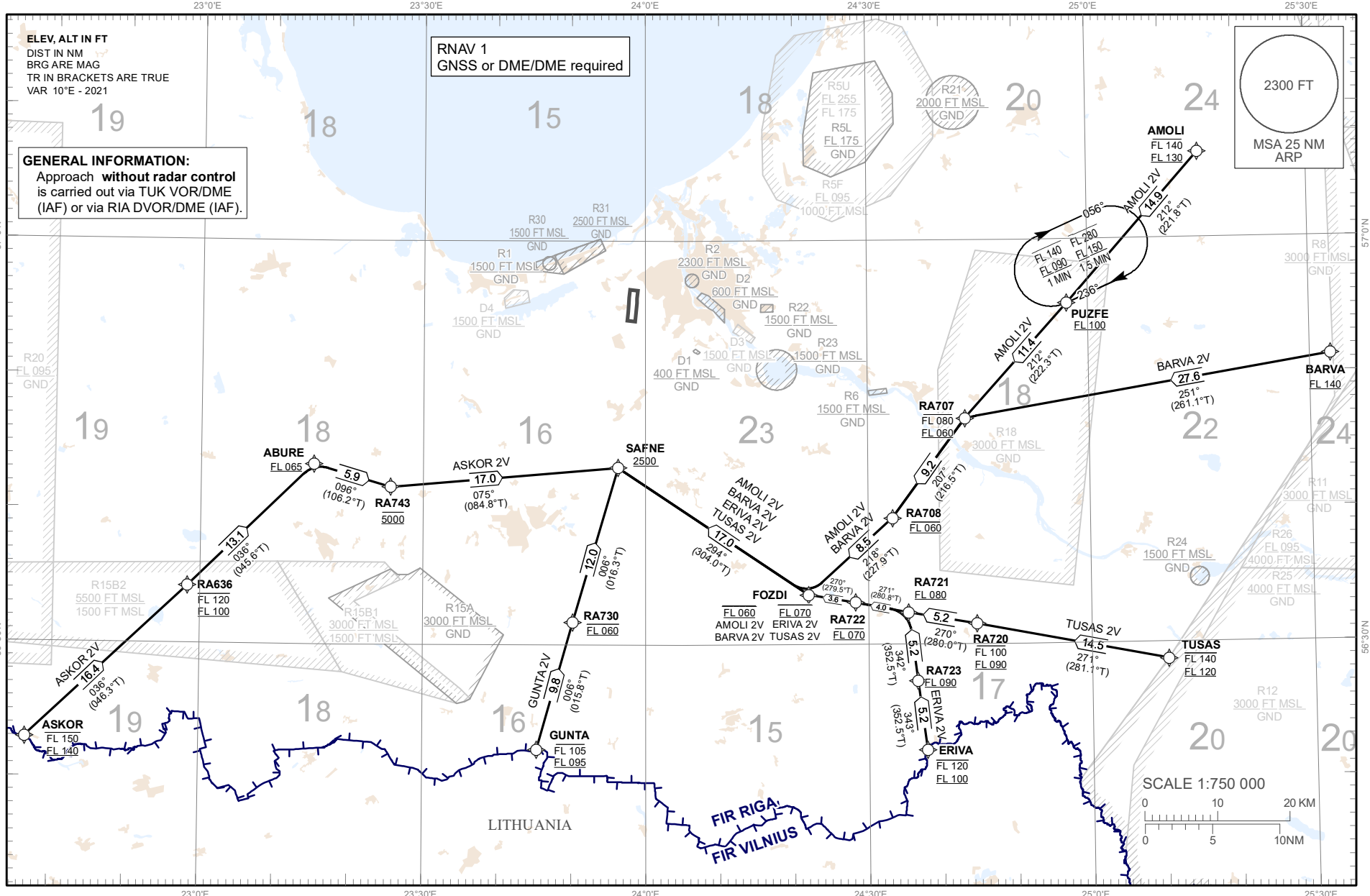
TRANSITION ALTITUDE 5000 FT

APP 129.925  
TWR 134.850 (HX)  
118.105  
ATIS 120.180

RIGA (EVRA)  
RNAV RWY36  
(direction SOUTH)

MAX IAS 250 kt BELOW FL100

AMOLI 2V, ASKOR 2V, BARVA 2V, ERIVA 2V, GUNTA 2V, TUSAS 2V



Changes: R18 updated.

RNAV PROCEDURE CODING TABLES

AMOLI 2V										
Serial Number	Path Descriptor	Waypoint Identifier	Flyover	Course °M (°T)	Magnetic Variation (°)	Distance NM	Turn Direction	Altitude FT	Speed KT	Navigation Specification
10	IF	AMOLI	-	-	+10.0	-	-	+130 FL/-140 FL	-280	RNAV 1
20	TF	PUZFE	-	212 (221.8)	+10.0	14.9	L	+100 FL		RNAV 1
30	TF	RA707	-	212 (222.3)	+10.0	11.4	R	+060 FL/-080 FL	-250	RNAV 1
40	TF	RA708	-	207 (216.5)	+10.0	9.2	L	@060 FL		RNAV 1
50	TF	FOZDI	-	218 (227.9)	+10.0	8.5	R	@060 FL	-230	RNAV 1
60	TF	SAFNE	-	294 (304.0)	+10.0	17.0	R	+2500	-210	RNAV 1

ASKOR 2V										
Serial Number	Path Descriptor	Waypoint Identifier	Flyover	Course °M (°T)	Magnetic Variation (°)	Distance NM	Turn Direction	Altitude FT	Speed KT	Navigation Specification
10	IF	ASKOR	-	-	+10.0	-	-	+140 FL/-150 FL	-280	RNAV 1
20	TF	RA636	-	036 (046.3)	+10.0	16.4	L	+100 FL/-120 FL	-240	RNAV 1
30	TF	ABURE	-	036 (045.6)	+10.0	13.1	L	+065 FL		RNAV 1
40	TF	RA743	-	096 (106.2)	+10.0	5.9	R	@5000	-230	RNAV 1
50	TF	SAFNE	-	075 (084.8)	+10.0	17.0	L	+2500	-210	RNAV 1

BARVA 2V										
Serial Number	Path Descriptor	Waypoint Identifier	Flyover	Course °M (°T)	Magnetic Variation (°)	Distance NM	Turn Direction	Altitude FT	Speed KT	Navigation Specification
10	IF	BARVA	-	-	+10.0	-	-	+140 FL	-280	RNAV 1
20	TF	RA707	-	251 (261.1)	+10.0	27.6	L	+060 FL/-080 FL	-250	RNAV 1
30	TF	RA708	-	207 (216.5)	+10.0	9.2	L	@060 FL		RNAV 1
40	TF	FOZDI	-	218 (227.9)	+10.0	8.5	R	@060 FL	-230	RNAV 1
50	TF	SAFNE	-	294 (304.0)	+10.0	17.0	R	+2500	-210	RNAV 1

ERIVA 2V										
Serial Number	Path Descriptor	Waypoint Identifier	Flyover	Course °M (°T)	Magnetic Variation (°)	Distance NM	Turn Direction	Altitude FT	Speed KT	Navigation Specification
10	IF	ERIVA	-	-	+10.0	-	-	+100 FL/-120 FL	-250	RNAV 1
20	TF	RA723	-	343 (352.5)	+10.0	5.2	R	+090 FL	-240	RNAV 1
30	TF	RA721	-	342 (352.5)	+10.0	5.2	L	+080 FL		RNAV 1
40	TF	RA722	-	271 (280.8)	+10.0	4.0	L	@070 FL		RNAV 1
50	TF	FOZDI	-	270 (279.5)	+10.0	3.6	L	@070 FL	-230	RNAV 1
60	TF	SAFNE	-	294 (304.0)	+10.0	17.0	R	+2500	-210	RNAV 1

GUNTA 2V										
Serial Number	Path Descriptor	Waypoint Identifier	Flyover	Course °M (°T)	Magnetic Variation (°)	Distance NM	Turn Direction	Altitude FT	Speed KT	Navigation Specification
10	IF	GUNTA	-	-	+10.0	-	-	+095 FL/-105 FL	-240	RNAV 1
20	TF	RA730	-	006 (015.8)	+10.0	9.8	R	@060 FL	-220	RNAV 1
30	TF	SAFNE	-	006 (016.3)	+10.0	12.0	R	+2500	-210	RNAV 1

TUSAS 2V										
Serial Number	Path Descriptor	Waypoint Identifier	Flyover	Course °M (°T)	Magnetic Variation (°)	Distance NM	Turn Direction	Altitude FT	Speed KT	Navigation Specification
10	IF	TUSAS	-	-	+10.0	-	-	+120 FL/-140 FL	-280	RNAV 1
20	TF	RA720	-	271 (281.1)	+10.0	14.5	L	+090 FL/-100 FL	-240	RNAV 1
30	TF	RA721	-	270 (280.0)	+10.0	5.2	L	+080 FL		RNAV 1
40	TF	RA722	-	271 (280.8)	+10.0	4.0	R	@070 FL		RNAV 1
50	TF	FOZDI	-	270 (279.5)	+10.0	3.6	L	@070 FL	-230	RNAV 1
60	TF	SAFNE	-	294 (304.0)	+10.0	17.0	R	+2500	-210	RNAV 1

WAYPOINT COORDINATES

WPT	COORD	
ABURE	564323.71N	0231514.90E
AMOLI	570621.00N	0251515.00E
ASKOR	562258.00N	0223646.00E
BARVA	565114.00N	0253248.00E
ERIVA	562208.00N	0243749.00E
FOZDI	563344.01N	0242155.30E
GUNTA	562217.00N	0234520.00E
PUZFE	565513.53N	0245707.20E
SAFNE	564311.86N	0235615.96E
TUSAS	562846.00N	0251018.00E

WPT	COORD	
RA636	563416.96N	0225815.90E
RA707	564647.66N	0244311.50E
RA708	563924.83N	0243316.70E
RA720	563130.84N	0244433.20E
RA721	563224.22N	0243522.30E
RA722	563308.78N	0242816.90E
RA723	562717.92N	0243635.40E
RA730	563143.88N	0235010.40E
RA743	564144.17N	0232535.70E

RNAV Holdings

Waypoint Identifier	INBD °M (°T)	Turn Direction	MNM/MAX HLDG	Speed KT	Time
PUZFE	236 (246.2)	R	+090FL/-140FL	-240	1 MIN
565513.53N 0245707.20E			+150FL/-280FL	-265	1.5 MIN