

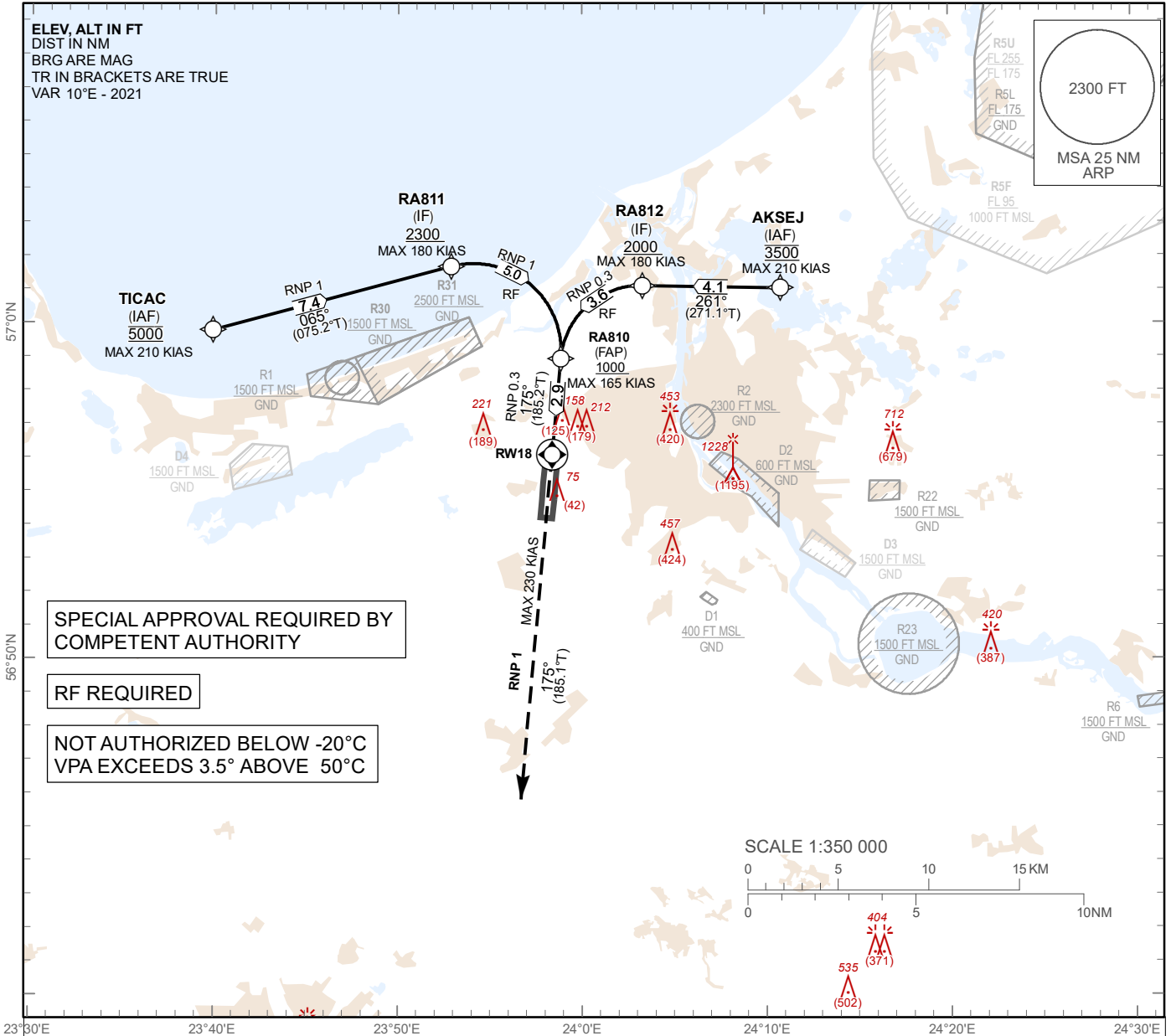
**INSTRUMENT  
APPROACH  
CHART - ICAO**

**AERODROME ELEV 37 ft  
HEIGHTS RELATED TO  
THR RWY 18 - ELEV 33 ft**

APP 129.925  
134.850 (HX)  
TWR 118.105  
ATIS 120.180

**RIGA (EVRA)**

**RNP Z RWY 18 (AR)**



SPECIAL APPROVAL REQUIRED BY  
COMPETENT AUTHORITY

RF REQUIRED

NOT AUTHORIZED BELOW -20°C  
VPA EXCEEDS 3.5° ABOVE 50°C

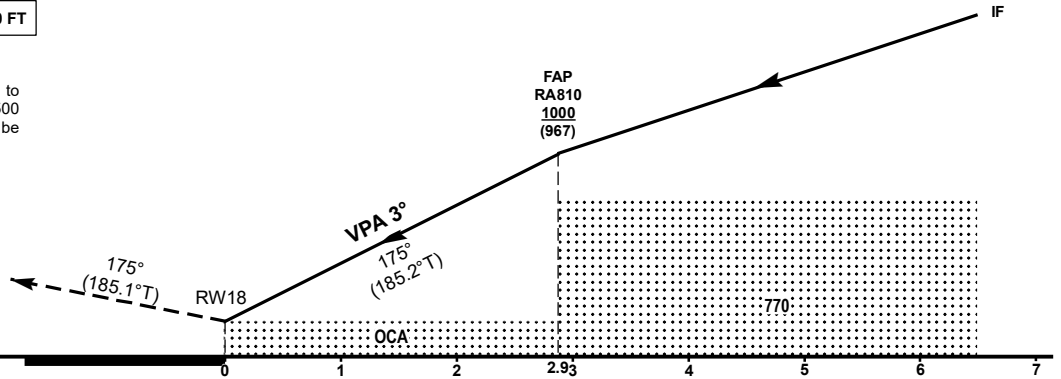
TRANSITION ALT 5000 FT

MISSED APPROACH  
Climb on runway track to  
2500, after passing 1500  
radar vectoring will be  
provided

COM FAILURE see  
EVRAAD 2.22

RDH 52

THR18 ELEV 33 FT  
NM from THR RWY 18



OCA (H)	A	B	C	D
RNP 0.3	294 (261)	306 (273)	314 (281)	325 (292)

DIST THR	2	1
ALT	721	403
HGT	(688)	(370)

GS	kt	80	100	120	140	160	180
Rate of descent (5.2%)	ft/min	420	530	640	740	850	960

Changes: obstacles updated.

For data tabulation see verso

RIGA (EVRA)

AERONAUTICAL DATA TABULATION

INSTRUMENT  
APPROACH  
CHART - ICAO

RNP Z RWY 18 (AR)

TABULAR DESCRIPTION

RNP Z RWY 18 (AR)											
Serial Number	Path Descriptor	Waypoint Identifier	Flyover	Course °M(°T)	Magnetic Variation(°)	Distance NM	Turn Direction	Altitude FT	Speed KT	VPA (°)	Navigation Specification
10	IF	AKSEJ	-	-	-	-	-	@3500	-210	-	RNP 0.3
20	TF	RA812	-	261 (271.1)	+10.0	4.1	-	+2000	-180	-3.4	RNP 0.3
30	RF Centre: RA821 r = 2.4 NM	RA810	-	261 (271.2)	+10.0	3.6	L	+1000	-165	-2.6	RNP 0.3
10	IF	TICAC	-	-	-	-	-	@5000	-210	-	RNP 1
20	TF	RA811	-	065 (075.2)	+10.0	7.4	-	+2300	-180	-3.5	RNP 1
30	RF Centre: RA820 r = 2.6 NM	RA810	-	065 (075.1)	+10.0	5.0	R	+1000	-165	-2.5	RNP 1
40	TF	RW18	Y	175 (185.2)	+10.0	2.9	-			-3	RNP 0.3
50	CA	-	-	175 (185.1)	+10.0	-	-	+2500	-230	+1.4	RNP 1

WAYPOINT LIST

RNP Z RWY 18 (AR)		
Waypoint Identifier	Coordinates	
AKSEJ	57°01'03.24"N	024°10'50.30"E
RA812	57°01'08.23"N	024°03'18.89"E
RA810	56°58'57.60"N	023°58'51.42"E
TICAC	56°59'48.40"N	023°39'54.20"E
RA811	57°01'41.94"N	023°52'53.96"E
RW18	56°56'06.25"N	023°58'23.08"E
RF Arc Centre Identifier	Coordinates	
RA821	56°58'44.58"N	024°03'13.50"E
RA820	56°59'11.53"N	023°54'07.44"E