

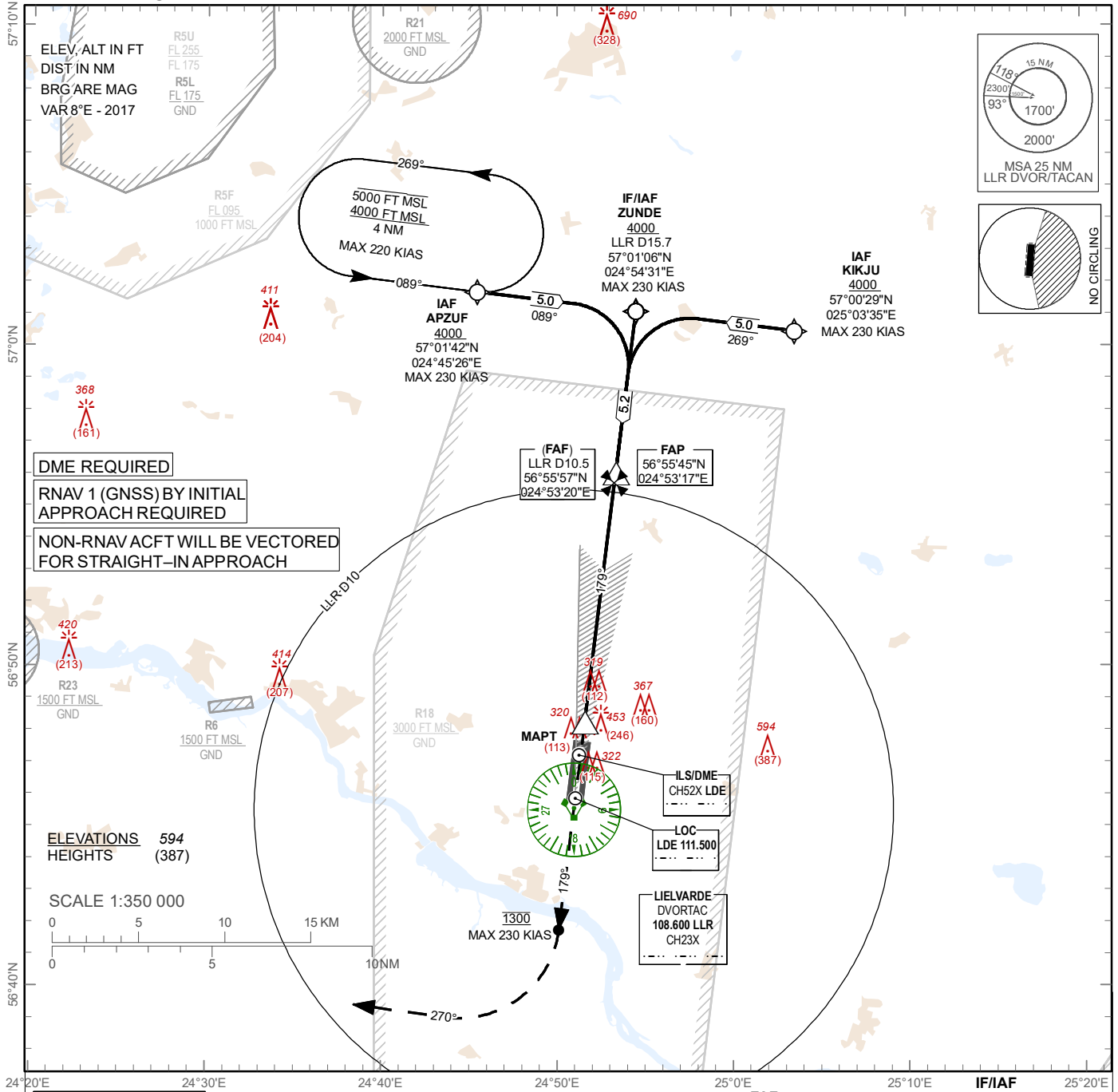
INSTRUMENT APPROACH CHART - ICAO

AERODROME ELEV 207 ft
HEIGHTS RELATED TO THR RWY 18 - ELEV 207 ft

APP 129.925
134.850 (HX)
TWR 118.155
ATIS 124.805

LIELVARDE (MIL) (EVGA)

ILS or LOC RWY 18



TRANSITION ALT 5000 FT

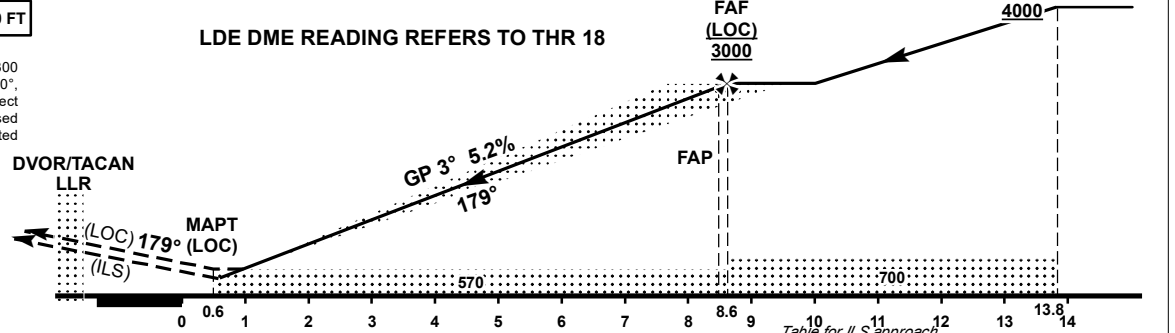
MISSED APPROACH
Climb on runway track to 1300 ft, turn right on track 270°, climbing to 2500 ft, expect radar vectoring. Missed approach turn speed limited 230 KIAS maximum.

COM FAILURE see EVGA AD 2.22

ILS RDH 50

THR ELEV 207 FT
NM from THR RWY 18

LDE DME READING REFERS TO THR 18



OCA (H)		A	B	C	D	E
Straight-in Approach	ILS Cat. I	453 (246)	465 (258)	473 (266)	484 (277)	502 (295)
	LOC	570 (370)				
Circling		750 (550)	850 (640)	900 (690)	1140 (930)	

Timing not authorized for defining the MAPt

GS	kt	80	100	120	140	160	180
Rate of descent (5.2%)	ft/min	420	530	640	740	850	960
FAF-MAPt (8.0 NM)	min:sec	06:00	04:48	04:00	03:26	03:00	02:40

Table for ILS approach

DIST LDE	8	7	6	5	4	3	2	1
DIST THR	8	7	6	5	4	3	2	1
ALT	2870	2530	2200	1870	1550	1220	900	580
HGT	(2663)	(2323)	(1993)	(1663)	(1343)	(1013)	(693)	(373)

Table for LOC approach

DIST LLR	9.9	8.9	7.9	6.9	5.9	4.9	3.9	2.9
DIST THR	8	7	6	5	4	3	2	1
ALT	2810	2490	2170	1850	1530	1210	900	580
HGT	(2603)	(2283)	(1963)	(1643)	(1323)	(1003)	(683)	(363)

For data tabulation see verso

Changes: obstacles updated.

LIELVARDE (MIL) (EVGA)

AERONAUTICAL DATA TABULATION

INSTRUMENT
APPROACH
CHART - ICAO

ILS or LOC RWY 18

TABULAR DESCRIPTION

Identification Procedure		ILS or LOC RWY 18						MAG VAR 8.0°E (2017)			
Leg sequence	Path Descriptor	Waypoint Identifier	Fly - over	Course °M(°T)	Distance (NM)	Turn Direction	Altitude FT	Speed KT	VPA (°) / TCH (FT)	Navigation Specification	
INA APZUF	IF	APZUF	-	-	-	-	+4000	-230	-	RNAV 1	
	TF	ZUNDE	-	089(096.9)	5.0	R	+4000	-	-	RNAV 1	
INA KIKJU	IF	KIKJU	-	-	-	-	+4000	-230	-	RNAV 1	
	TF	ZUNDE	-	269(277.2)	5.0	L	+4000	-	-	RNAV 1	
INA ZUNDE	IF	ZUNDE	-	-	-	-	+4000	-230	-	RNAV 1	
Leg sequence	Path Descriptor	Waypoint Identifier	Fly - over	Course °M(°T)	Distance (NM)	Turn Direction	MNM ALT FT	MAX ALT FT	MAX Speed KT	Navigation Specification	
HLDG	HX	APZUF	Y	089(096.9)	4	L	4000	5000	220	RNAV 1	

ILS or LOC approach to RWY18 from APZUF, KIKJU, ZUNDE	
Fix/point	Coordinates
APZUF (IAF)	57°01'42.3" N 024°45'25.9" E
KIKJU (IAF)	57°00'28.7" N 025°03'35.2" E
ZUNDE (IF/IAF) LLR D15.72	57°01'06.0" N 024°54'30.7" E
FAP (ILS)	56°55'45.0"N 024°53'17.1"E
FAF LLR D10.52 (LOC)	56°55'56.9"N 024°53'19.9"E
MAPT LLR D2.49 (LOC)	56°48'03.0" N 024°51'31.8" E
THR RWY 18	56°47'24.66"N 024°51'23.06"E
LDE LOC	56°45'53.5"N 024°51'02.4"E
Final approach descent angle is 3.00°	