

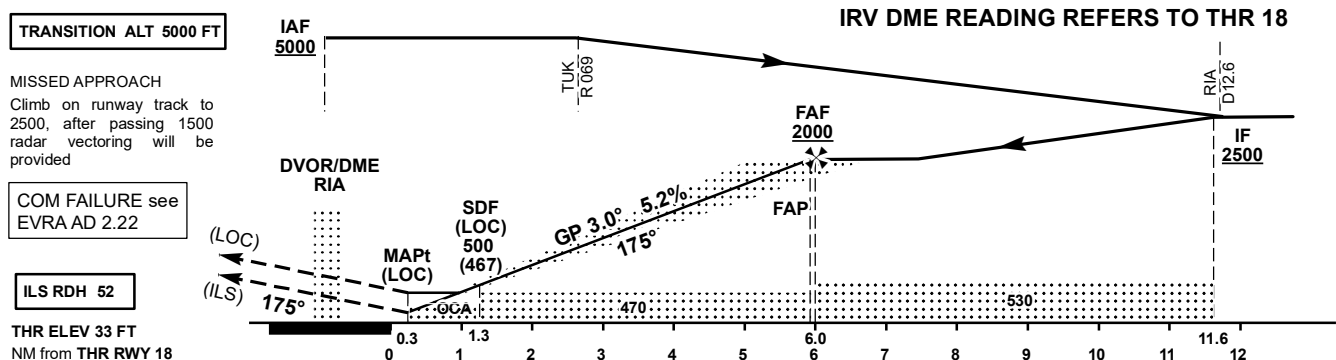
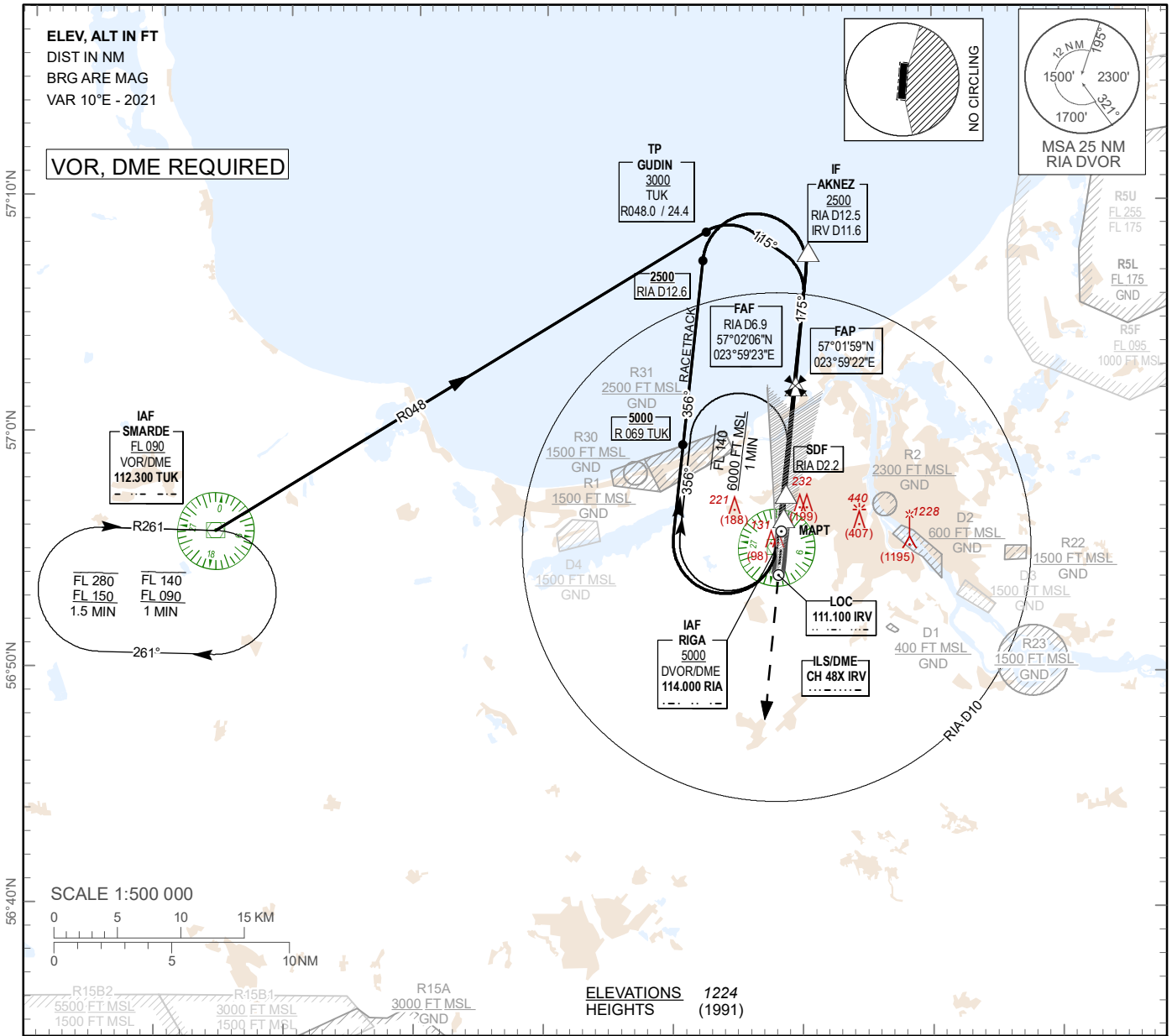
**INSTRUMENT  
APPROACH  
CHART - ICAO**

**AERODROME ELEV 37ft  
HEIGHTS RELATED TO  
THR RWY 18 - ELEV 33 ft**

APP 129.925  
134.850 (HX)  
TWR 118.105  
ATIS 120.180

**RIGA (EVRA)**

**ILS Z or LOC Z RWY 18**



OCA (H)		A	B	C	D
Straight-in Approach	ILS Cat. I	233 (200)			
	ILS Cat. II	(85)	(102)	(116)	(128)
	LOC	410 (380)			
Circling		530 (500)	630 (600)	730 (690)	

Timing not authorized for defining the MAPt							
GS	ft/min	80	100	120	140	160	180
Rate of descent (5.2%)	ft/min	420	530	640	740	850	960
FAF-MAPt (5.7 NM)	min:sec	04:17	03:25	02:51	02:26	02:08	01:54

Table for ILS approach					
DME IRV	5	4	3	2	1
DIST THR	5	4	3	2	1
ALT	1700	1380	1060	730	410
HGT	(1667)	(1347)	(1027)	(697)	(377)

Table for LOC approach					
DME RIA	5.9	4.9	3.9	2.9	1.9
DIST THR	5	4	3	2	1
ALT	1680	1360	1040	720	410
HGT	(1647)	(1327)	(1007)	(687)	(377)

For data tabulation see verso

Changes: obstacle updated.

RIGA (EVRA)

ILS Z or LOC Z RWY 18

AERONAUTICAL DATA TABULATION

ILS Z or LOC Z approach to RWY18 from RIA DVOR/DME (IAF), TUK VOR/DME (IAF)	
Fix/point	Coordinates
RIA DVOR/DME (IAF)	56°55'15.1"N 023°57'54.7"E
TUK VOR/DME (IAF)	56°55'50.1"N 023°14'23.9"E
GUDIN (TP) R048.00° D24.40 TUK	57°08'38.9"N 023°52'24.0"E
AKNEZ (IF) IRV D11.63; RIA D12.50	57°07'39.5"N 024°00'18.1"E
FAP (ILS)	57°01'59.2"N 023°59'21.5"E
FAF RIA D6.91 (LOC)	57°02'05.6"N 023°59'22.6"E
SDF RIA D2.20 (LOC)	56°57'24.6"N 023°58'36.1"E
MAPT RIA D1.19 (LOC)	56°56'24.1"N 023°58'26.1"E
THR RWY 18	56°56'06.25"N 023°58'23.08"E
IRV LOC	56°54'04.3"N 023°58'03.0"E
Final approach descent angle is 3.00°	