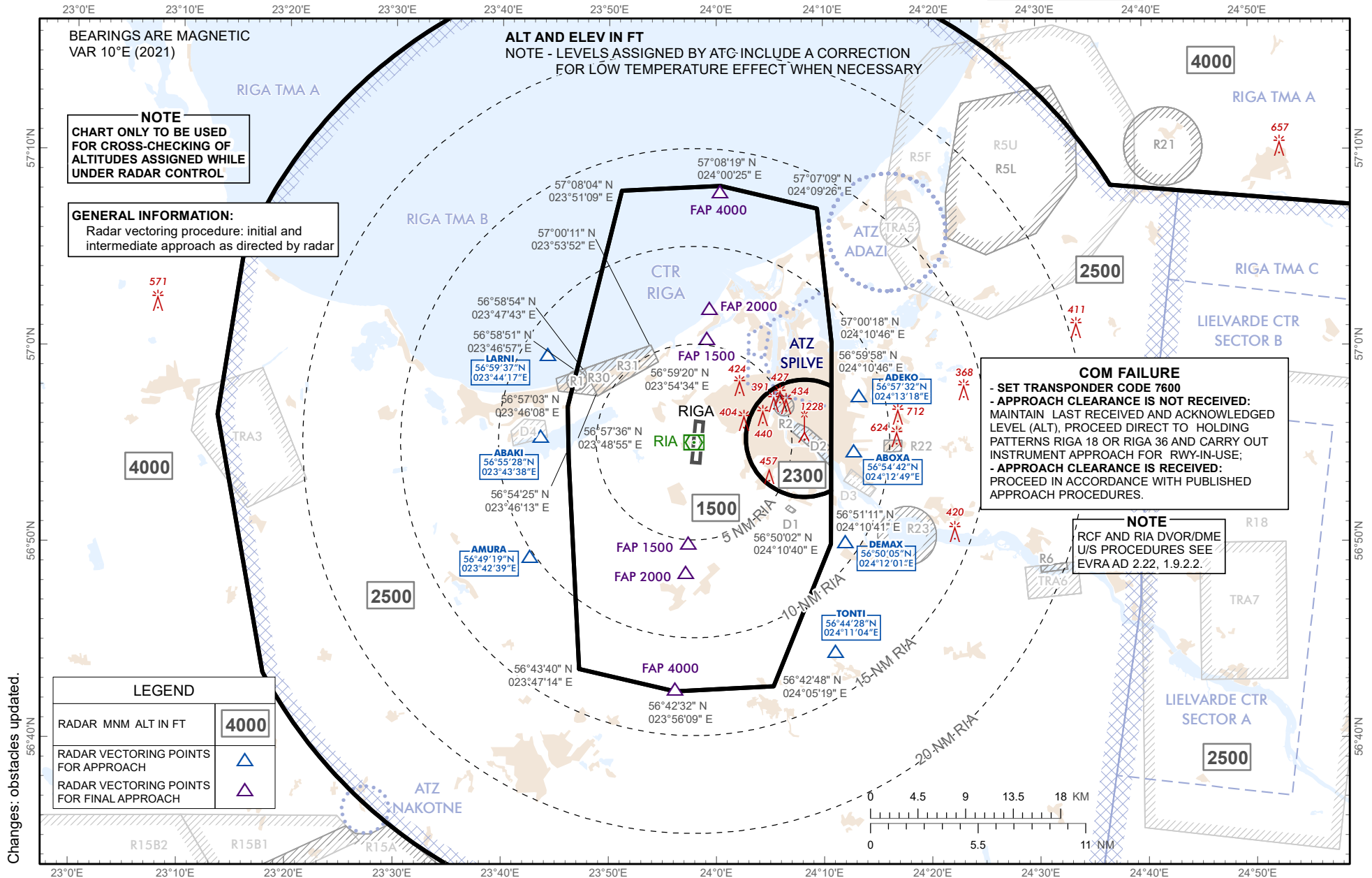


ATC SURVEILLANCE MINIMUM  
ALTITUDE CHART - ICAO

AERODROME ELEV 37 ft  
TRANSITION ALT 5000 ft

APP	129.925
TWR	134.850(HX)
ATIS	118.105
	120.180

RIGA (EVRA)



BEARINGS ARE MAGNETIC  
VAR 10°E (2021)

ALT AND ELEV IN FT  
NOTE - LEVELS ASSIGNED BY ATC INCLUDE A CORRECTION  
FOR LOW TEMPERATURE EFFECT WHEN NECESSARY

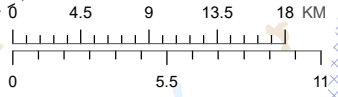
**NOTE**  
CHART ONLY TO BE USED  
FOR CROSS-CHECKING OF  
ALTITUDES ASSIGNED WHILE  
UNDER RADAR CONTROL

**GENERAL INFORMATION:**  
Radar vectoring procedure: initial and  
intermediate approach as directed by radar

**COM FAILURE**  
- SET TRANSPONDER CODE 7600  
- APPROACH CLEARANCE IS NOT RECEIVED:  
MAINTAIN LAST RECEIVED AND ACKNOWLEDGED  
LEVEL (ALT), PROCEED DIRECT TO HOLDING  
PATTERNS RIGA 18 OR RIGA 36 AND CARRY OUT  
INSTRUMENT APPROACH FOR RWY-IN-USE;  
- APPROACH CLEARANCE IS RECEIVED:  
PROCEED IN ACCORDANCE WITH PUBLISHED  
APPROACH PROCEDURES.

**NOTE**  
RCF AND RIA DVOR/DME  
U/S PROCEDURES SEE  
EVRA AD 2.22, 1.9.2.2.

LEGEND	
RADAR MNM ALT IN FT	4000
RADAR VECTORING POINTS FOR APPROACH	▲
RADAR VECTORING POINTS FOR FINAL APPROACH	▲



Changes: obstacles updated.

*INTENTIONALLY LEFT BLANK*