

INSTRUMENT APPROACH CHART - ICAO

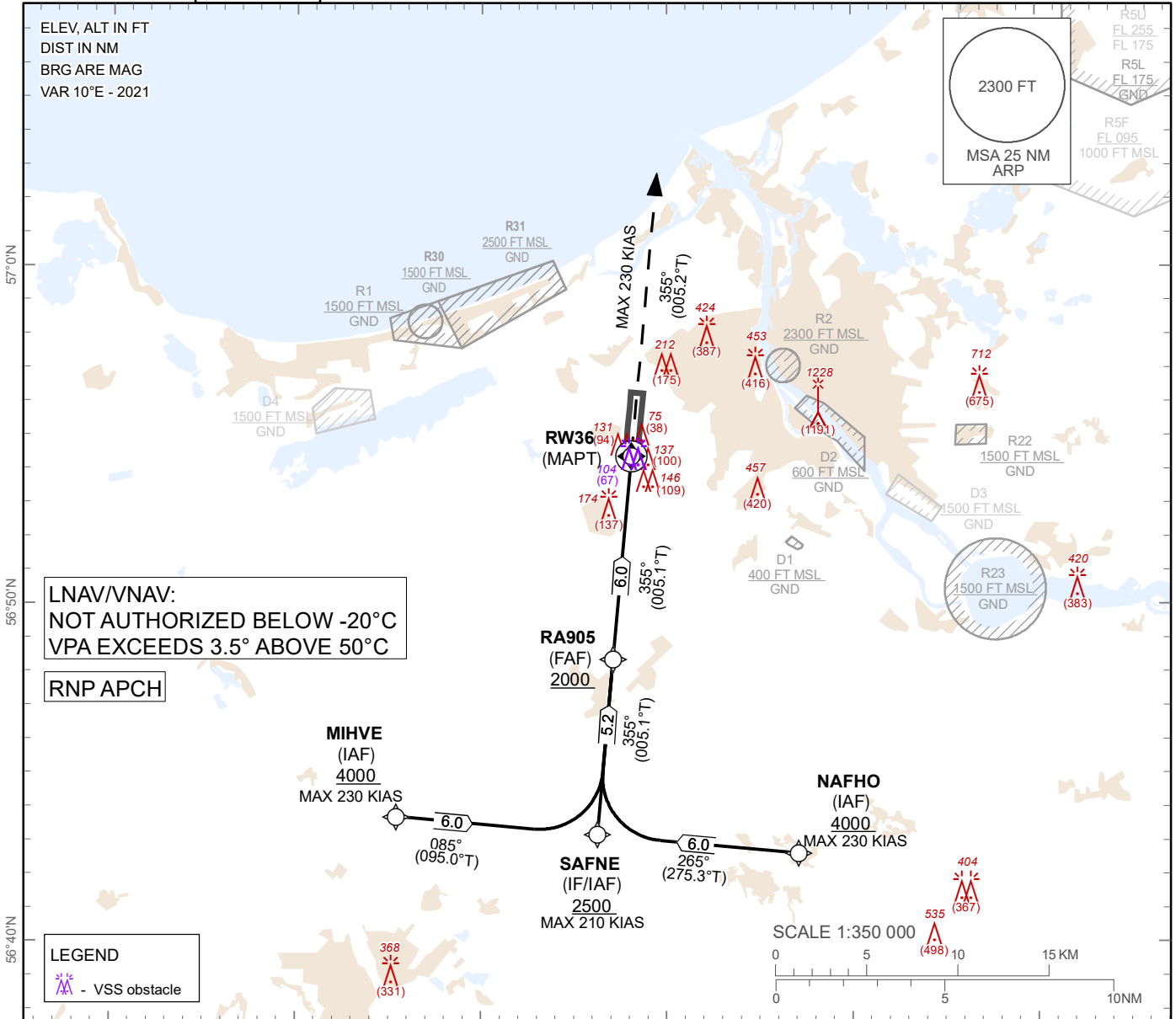
SBAS CH 54935 E36A

AERODROME ELEV 37ft
HEIGHTS RELATED TO THR RWY 36 - ELEV 37ft

APP 129.925
134.850 (HX)
TWR 118.105
ATIS 120.180

RIGA (EVRA)

RNP Y RWY36



LNAV/VNAV:
NOT AUTHORIZED BELOW -20°C
VPA EXCEEDS 3.5° ABOVE 50°C

RNP APCH

LEGEND
▲ - VSS obstacle

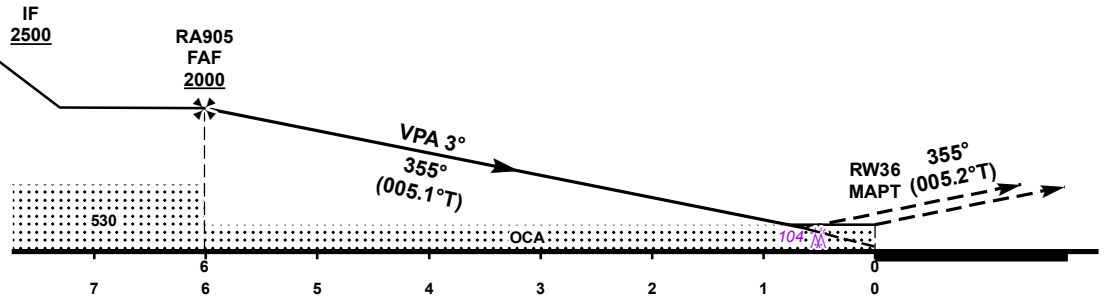
TRANSITION ALT 5000 FT

MISSED APPROACH
Climb on runway track to 2500, after passing 1500 radar vectoring will be provided.

COM FAILURE see EVRA AD 2.22

TCH 52

THR ELEV 37 FT
NM from THR RWY 36



OCA (H)		A	B	C	D
Straight-in Approach	LNAV	410(370)			
	LNAV/VNAV	276(239)	288(251)	302(265)	313(276)
	LPV	251(213)	263(226)	273(236)	283(246)

DIST THR	5	4	3	2	1
ALT	1680	1360	1040	730	410

GS		kt	80	100	120	140	160	180
Rate of descent	ft/min	420	530	640	740	850	960	
FAF-MAPT 3° (5.2%)								

For data tabulation see verso

Changes: obstacles updated.

RIGA (EVRA)	SBAS CH 54935 E36A	AERODROME ELEV 37 ft HEIGHTS RELATED TO THR RWY 36 - ELEV 37 ft	INSTRUMENT APPROACH CHART – ICAO
RNP Y RWY 36			

TABULAR DESCRIPTION

RNP Y RWY 36											
Serial Number	Path Descriptor	Waypoint Identifier	Fly-over	Course °M(°T)	Magnetic Variation	Distance (NM)	Turn Direction	Altitude (FT)	Speed (KT)	VPA (°) / TCH (FT)	Navigation Specification
010	IF	MIHVE	-	-	+10.0	-	-	+4000	-230	-	RNAV 1
020	TF	SAFNE	-	085(095.0)	+10.0	6.0	L	+2500	-210	-	RNAV 1
010	IF	NAFHO	-	-	+10.0	-	-	+4000	-230	-	RNAV 1
020	TF	SAFNE	-	265(275.3)	+10.0	6.0	R	+2500	-210	-	RNAV 1
010	IF	SAFNE	-	-	+10.0	-	-	+2500	-210	-	RNAV 1
010	IF	SAFNE	-	-	+10.0	-	-	+2500	-210	-	RNAV 1
020	TF	RA905	-	355(005.1)	+10.0	5.2	-	+2000	-	-	RNP APCH
030	TF	RW36	Y	355(005.1)	+10.0	6.0	-	@89	-	-3.0/52	RNP APCH
040	CA	-	-	355(005.2)	+10.0	-	-	+2500	-230	-	RNP APCH

WAYPOINT LIST

RNP Y RWY 36		
Waypoint Identifier	Coordinates	
MIHVE	56°43'43.50"N	023°45'25.07"E
NAFHO	56°42'39.28"N	024°07'06.54"E
SAFNE	56°43'11.86"N	023°56'15.96"E
RA905	56°48'24.67"N	023°57'07.17"E
RW36	56°54'23.22"N	023°58'06.08"E

FAS DATA BLOCK

INPUT DATA

Operation Type	0
SBAS Provider	1 (EGNOS)
Airport Identifier	EVRA
Runway	36
Runway Letter	0 (None)
Approach Performance Designator	0
Route Indicator	Y
Reference Path Data Selector	0
Reference Path Identifier	E36A
LTP/FTP Latitude	565423.2145N
LTP/FTP Longitude	0235806.1225E
LTP/FTP Ellipsoidal Height (metres)	32.0
FPAP Latitude	565615.0760N
Delta FPAP Latitude (seconds)	111.8615
FPAP Longitude	0235824.5775E
Delta FPAP Longitude (seconds)	18.4550
Threshold Crossing Height	15.8
TCH Units Selector	1 (meters)
Glidepath Angle (degrees)	3.00
Course Width (metres)	104.50
Length Offset (metres)	280
HAL (metres)	40.0
VAL (metres)	35.0

OUTPUT DATA

Data Block	10 01 12 16 05 24 C8 00 01 36 33 05 DD ED 6B 18 55 3E 49 0A 40 15 EB 69 03 2E 90 00 3C 81 2C 01 62 23 C8 AF 18 C7 A1 79
Calculated CRC Value	18C7A179

REQUIRED ADDITIONAL DATA

ICAO Code	EV
LTP/FTP Orthometric Height (metres)	11.3

EUROCONTROL FAS DB tool Version 3.2.0